



Flow Control Valves Technical Information

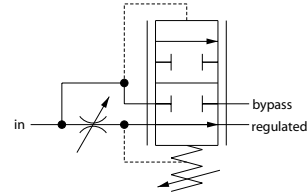
Catalog HIC

2F95-01

OPERATION

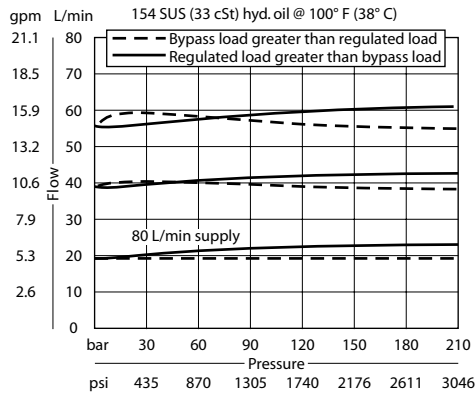
This valve is an adjustable, priority-type, pressure compensated flow control valve.

Schematic



SPECIFICATIONS

Theoretical performance



P102 682

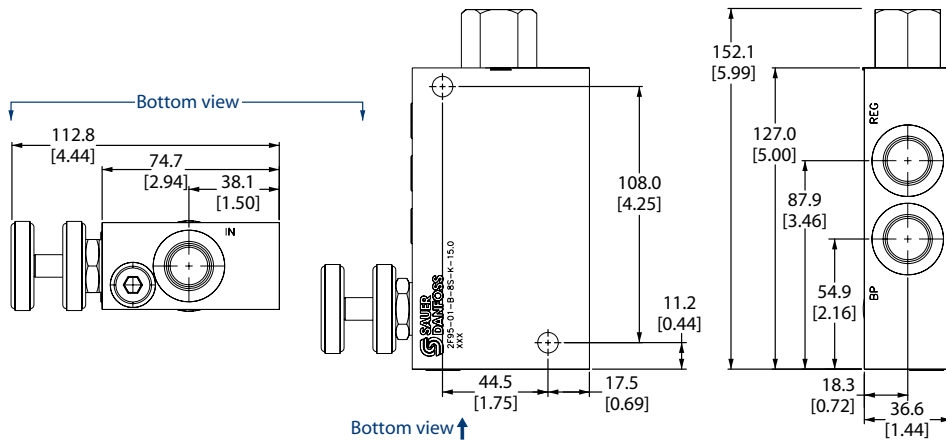
Specifications

Rated pressure	210 bar [3000 psi]
Max regulated flow	60 l/min [16 US gal/min]
Max inlet flow	95 l/min [25 US gal/min]
Weight	1.00 kg [2.20 lb]
Cavity	none

DIMENSIONS

mm in

Cross-sectional view



ORDERING INFORMATION

2F95-01-B-8S-E-15

- Adjustment options**
E = External adjustment
K = Knob adjustment
- Body and ports**
8S = Aluminum, #8 SAE
- Seals**
B = Buna-N
V = Viton
- Adjustment range**
Code = 0-15 gpm
- Seal kits**
Consult Factory