



# Flow Control Valves Technical Information

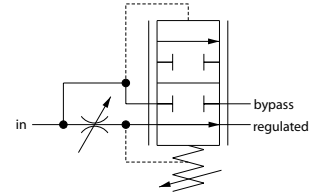
## Catalog HIC

### 2F96-01

### OPERATION

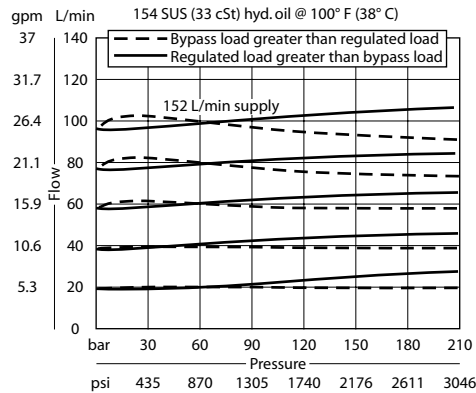
This valve is an adjustable, priority-type, pressure compensated flow control valve.

### Schematic



### SPECIFICATIONS

#### Theoretical performance



P102 682

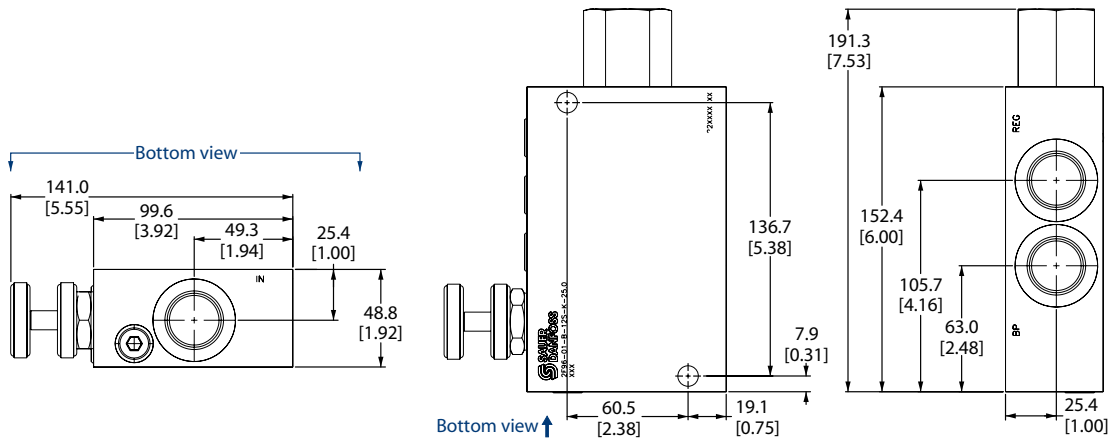
### Specifications

<b>Rated pressure</b>	210 bar [3000 psi]
<b>Max regulated flow</b>	95 l/min [25 US gal/min]
<b>Max inlet flow</b>	150 l/min [40 US gal/min]
<b>Weight</b>	1.77 kg [3.90 lb]
<b>Cavity</b>	none

### DIMENSIONS

mm in

#### Cross-sectional view



### ORDERING INFORMATION

2F96-01-B-12S-E-25

**Adjustment options**  
E = External adjustment  
K = Knob adjustment

**Adjustment range**  
Code = 0-25 gpm

**Body and ports**  
12S = Aluminum, #12 SAE

**Seals**

B = Buna-N  
V = Viton

Seal kits  
Consult Factory  
Consult Factory