



Flow Control Valves Technical Information

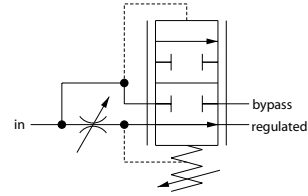
Catalog HIC

2F97-01

OPERATION

This valve is an adjustable, priority-type, pressure compensated flow control valve.

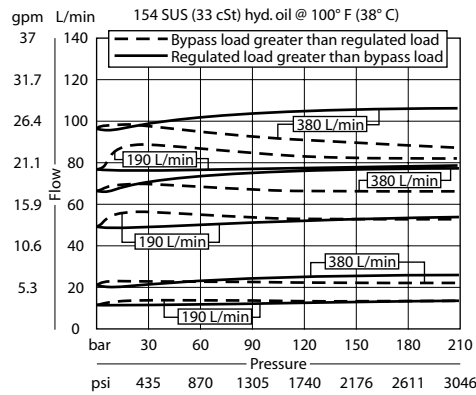
Schematic



P102 682

SPECIFICATIONS

Theoretical performance



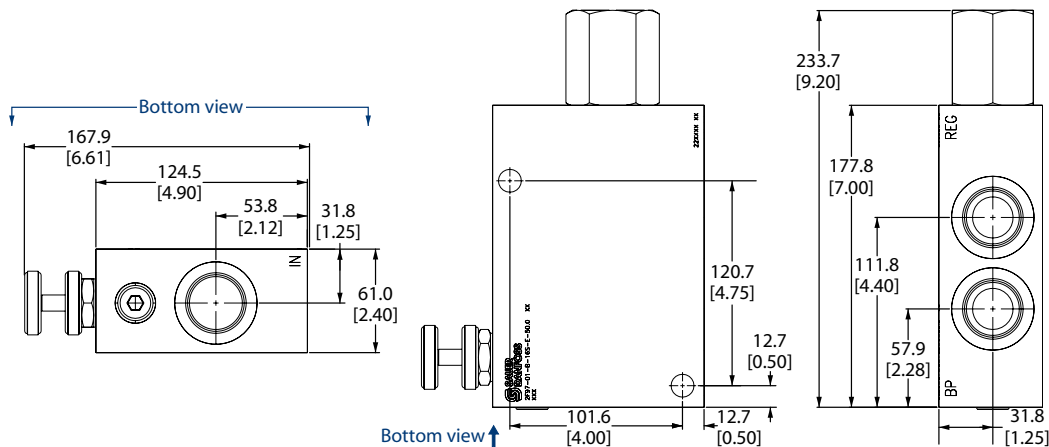
Specifications

Rated pressure	210 bar [3000 psi]
Max regulated flow	190 l/min [50 US gal/min]
Max inlet flow	380 l/min [100 US gal/min]
Weight	3.81 kg [8.40 lb]
Cavity	none

DIMENSIONS

mm in

Cross-sectional view



ORDERING INFORMATION

2F97-01-B-16S-E-50

- Adjustment options**
E = External adjustment
K = Knob adjustment
- Body and ports**
16S = Aluminum, #16 SAE
- Seals**
B = Buna-N
V = Viton
- Adjustment range**
Code = 0-50 gpm
- Seal kits**
Consult Factory