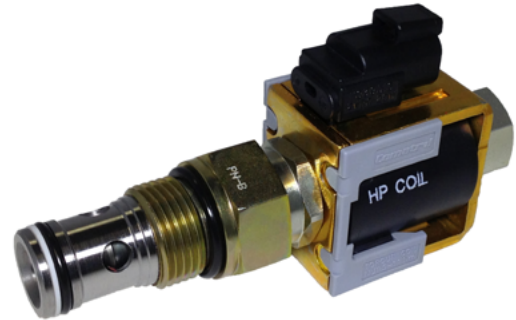


### OPERATION

This is a normally-open, pilot-operated, poppet-type 12-size solenoid valve with free reverse flow. When de-energized the valve allows flow from port 1 to 2 and from port 2 to 1. When energized, the pilot poppet closes allowing the valve to act as a check valve flowing from port 1 to port 2, while blocking flow from port 2 to 1. This valve comes standard with a push pin type manual override.

### APPLICATIONS

This is a low leakage valve designed for use in load holding applications or as a general purpose diverter or dump valve.



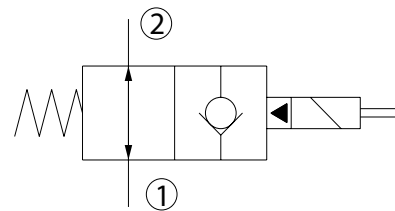
Shown with Standard H16 Coil,  
Deutsch Connector

### SPECIFICATIONS

Rated pressure*	350 bar [5075 psi]*
Rated flow at 7 bar [100 psi]	114 l/min [30 US gal/min]
Leakage	6 drops/min @ Rated pressure
Weight	0.67 kg [1.47 lb]
Cavity	CP12-2
Standard Coil	H16 29 Watt

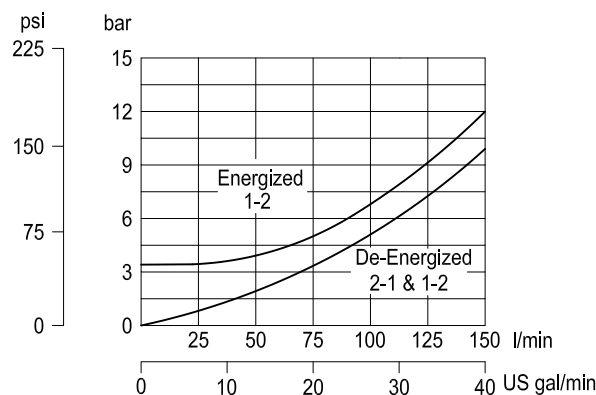
\* Rated Pressure based on NFPA fatigue test standards (at 1 Million Cycles).

### SCHEMATIC



### PERFORMANCE CURVES

Pressure drop  
26 cSt [121 SUS] hyd.oil at 50C [122F]





# Solenoid Valves Technical Information

## 2-Way Poppet

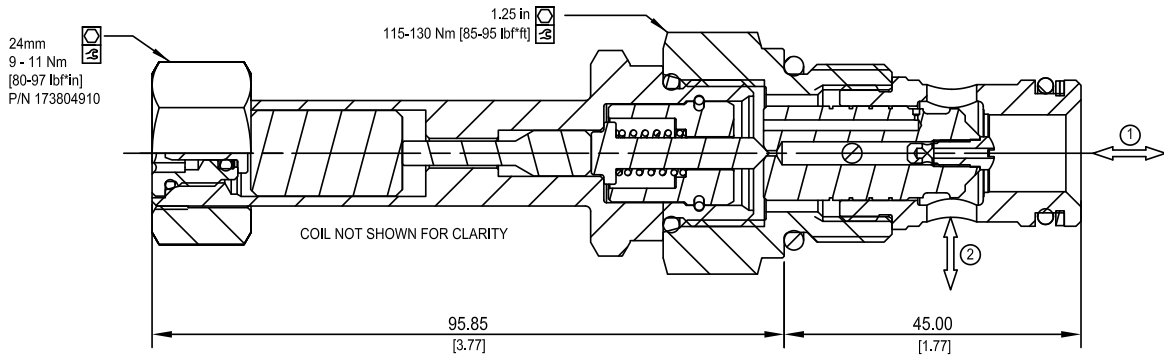
### HSVP12-NOR



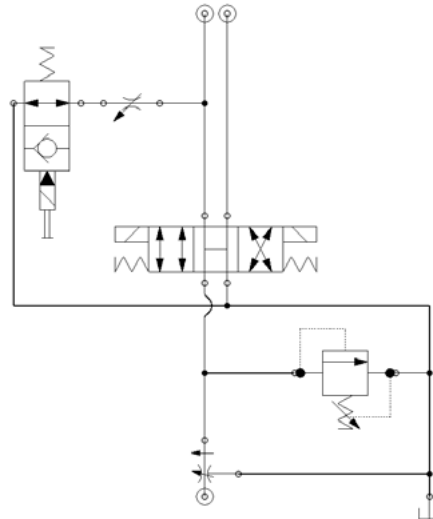
### DIMENSIONS

mm [in]

### Cross-sectional view



### EXAMPLE CIRCUITS



### ORDERING INFORMATION

HSVP12 - NOR - H12D - DE - PN - B - 00

High Pressure Solenoid Valve  
Normally-Open, Pilot Operated,  
Free Reverse Flow, 12 Size,  
Poppet Type

#### Coil Voltage

Code	Description
H00	No Coil
H12D	12 VDC
H24D	24 VDC

#### Coil Termination

Code	Description	IP Rating
00	No Coil	-
FL	Flying Lead	IP69K
DE	Deutsch	IP69K
AS	AMP Super Seal 1.5 & Metri Pack 150 type 1	IP69K
ASDB	AMP Super Seal with Diode Bidirectional	IP69K
DEDB	Deutsch with Diode Bidirectional	IP69K
FLDB	Flying Lead with Diode Bidirectional	IP69K

#### Bodies

Code	Ports & Material	Body Nomenclature
00	Cartridge Only	No Body
10S	#10 SAE, AL	CP12-2-10S
S10S	#10 SAE, DUCTILE	CP12-2-S10S
12S	#12 SAE, AL	CP12-2-12S
S12S	#12 SAE, DUCTILE	CP12-2-S12S
4B	1/2 BSP, AL	CP12-2-4B
S4B	1/2 BSP, DUCTILE	CP12-2-S4B
6B	3/4 BSP, AL	CP12-2-6B
S6B	3/4 BSP, DUCTILE	CP12-2-S6B

\*\*Aluminum bodies are to be used for lower pressures less than 210 bar (3,000 psi)

#### Seal Option

Code	Seal Material	Seal Kit
B	Buna	120017
V	Viton	120018

#### Manual Overrides

Code	Description
PN	Push Pin
OPS	Push Pin M/O Nut for Protection & Actuation
PAT	Push and Twist