

Operating Guide

MCXS

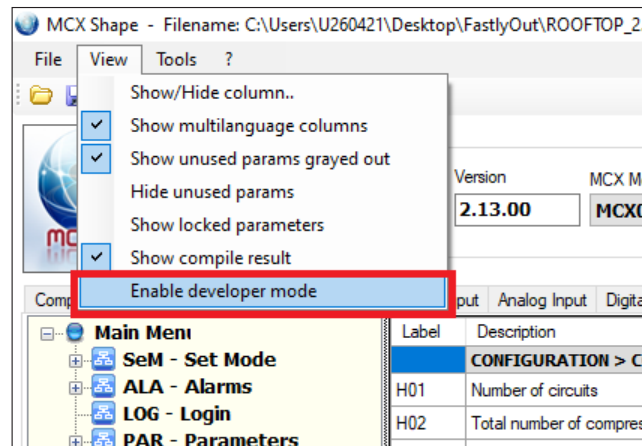
How to add a language

Summary

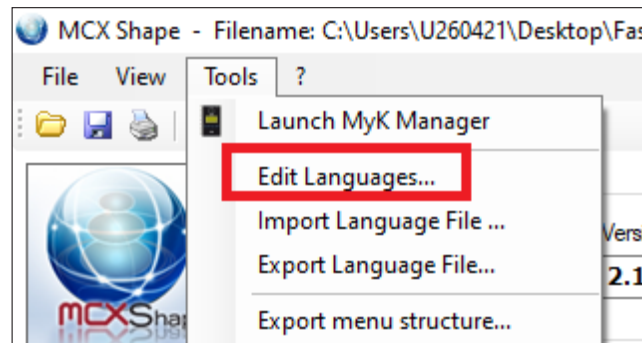
MCXShape allows adding new languages to the available one. The procedure is quite easy and is explained below.

Description

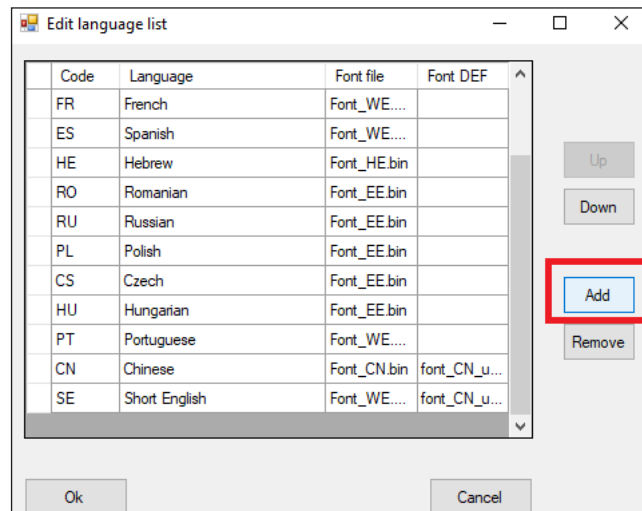
1. Enable developer mode from the menu "View":



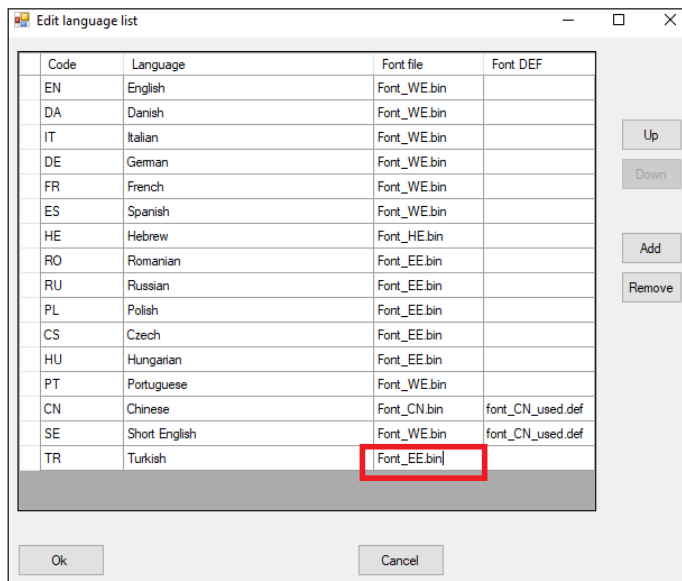
2. Edit Languages from the menu "Tools":



3. Add new languages:



4. Type the "Font" that will be used for the language:
The ones available are in the folder "bin". By opening them with a text editor, you can check the characters inside



5. Save the changes with the button "OK":



Note: now there will be an additional column containing the new language.

Application Data

| | | | | |
|---------|---------|-----------|-----------|-------------|
| Name | Version | MCX Model | Expansion | Description |
| ROOFTOP | 2.13.00 | MCX08M2 | NO | Rooftop |

Menu & Parameters

| Label | Descr | Short English | Turkish |
|---------------|---------------------------|---------------|---------|
| CONFIG | | | |
| H01 | Number Circuits num. | | |
| H02 | Total nu Compressors num. | | |
| H03 | Number Steps per comp. | | |
| H04 | Number Condensers num. | | |
| H05 | Number Fans per cond. 1 | | |
| H06 | Number Fans per cond. 2 | | |
| H11 | Fans in + Fans in common | | |
| CONFIG | | | |
| H07 | Heating Heating type | | |
| H08 | Number Heaters number | | |

6. Add the new language to the menu "LNG-Language"

MCX Shape - Filename: C:\Users\U260421\Desktop\FastlyOut\ROOFTOP_2.13.01\ROOFTOP_2.13.01.R

Application Data

| | | |
|---------|---------|-----------|
| Name | Version | MCX Model |
| ROOFTOP | 2.13.00 | MCX08M2 |

Menu & Parameters

| Label | Description |
|-----------------------------------|-------------------------------|
| CONFIGURATION > COOLING | |
| H01 | Number of circuits |
| H02 | Total number of compressors |
| H03 | Number of unloaders per comp. |
| H04 | Number of condensers |
| H05 | Number of fans on condenser 1 |
| H06 | Number of fans on condenser 2 |

Context menu for 'LNG - Language':

- Find... (Ctrl+F)
- Add new menu...**
- Add new parameter...
- Add menu...
- Edit...
- Remove menu/parameter
- Cut (Ctrl+X)
- Copy (Ctrl+C)

7. The "Out Code" must be set in such an order that it will be consecutive with the previous menu:

Menu settings

ID 755

Label: TU

Description: Turkish

Level: 0

Enabled:

Out Code: 185

Variable Name: Menu_Label_755

Functionality:

Visibility:

Languages Refresh Languages

| Language | Description |
|----------|-------------|
| English | Turkish |
| Danish | |
| Italian | |
| German | |
| French | |
| Spanish | |
| Hebrew | |
| Romanian | |
| Russian | |
| Polish | |

Save Cancel

Application Data

Name: ROOFTOP

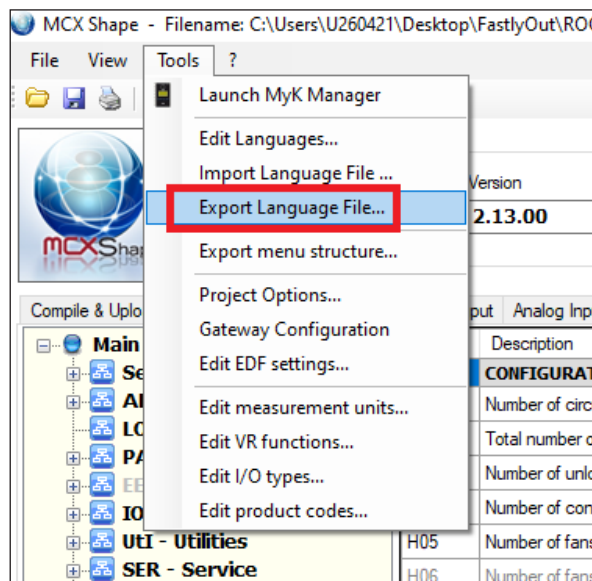
Compile & Upload Menu & Parameters Alarms Digital In

Main Menu

- SeM - Set Mode
- ALA - Alarms
- LOG - Login
- PAR - Parameters
- EEV - Config EEV
- IO - Input/Output
- UTI - Utilities
- SER - Service
- LNG - Language
 - EN - English
 - DA - Danish
 - IT - Italian
 - DE - German
 - FR - French
 - ES - Spanish
 - HE - Hebrew
 - RO - Romanian
 - RU - Russian
 - PL - Polish
 - CS - Czech
 - HU - Hungarian ...
 - PT - Portuguese 183
 - CN - Chinese 184
 - TU - Turkish 185
- STV - Status var

| Label |
|-------|
| H01 |
| H02 |
| H03 |
| H04 |
| H05 |
| H06 |
| H11 |
| H07 |
| H08 |
| H09 |
| H10 |
| dSC |
| CF1 |
| CF2 |
| CF3 |
| CF4 |
| CF5 |

8. Export Language File from the menu "Tools":



9. Fulfill the translation in the file export_lang.XLS

10. Import language file from the menu "Tools":

