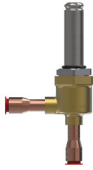

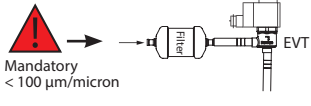
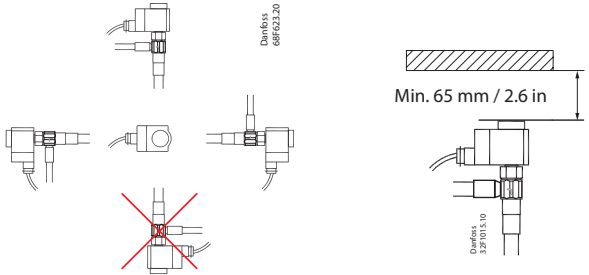
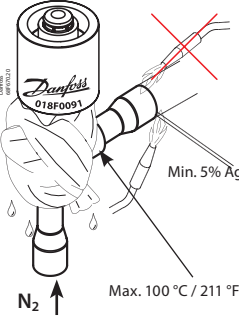
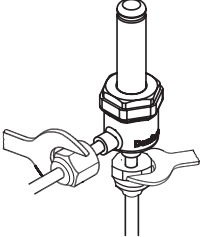
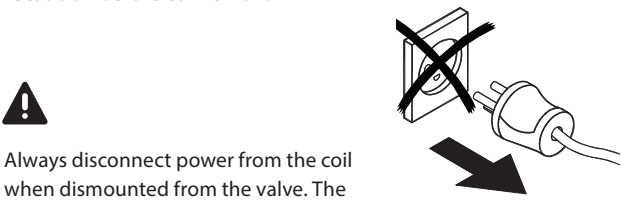
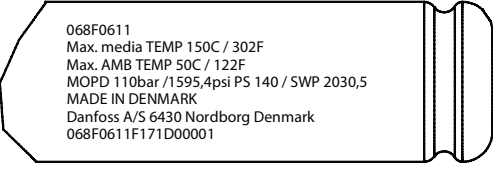
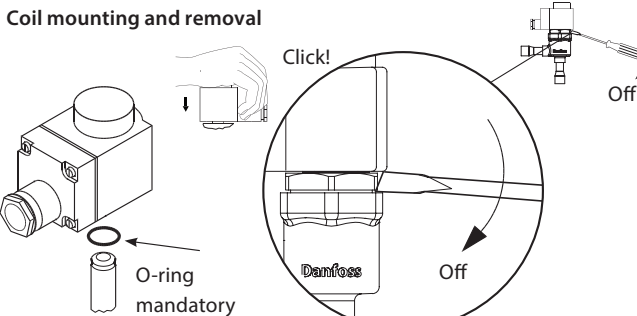
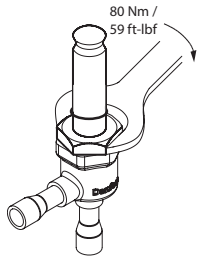


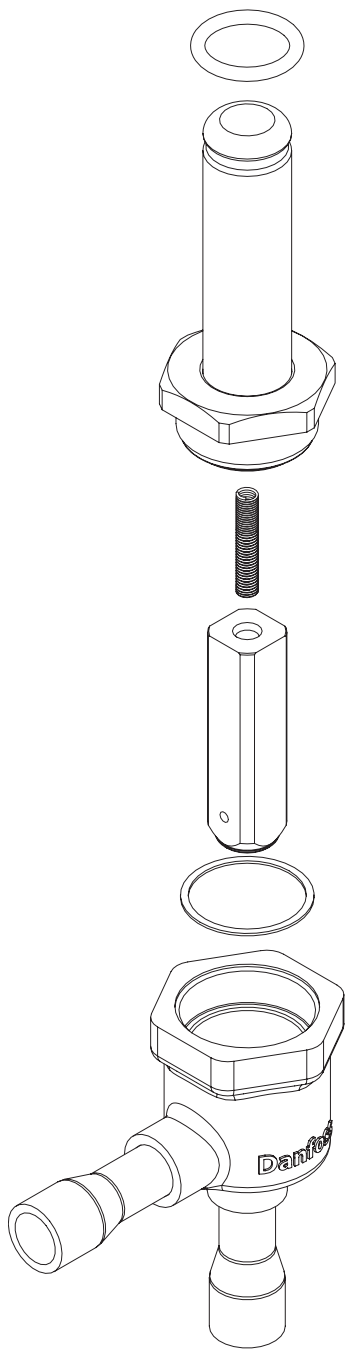
032R9609

032R9609

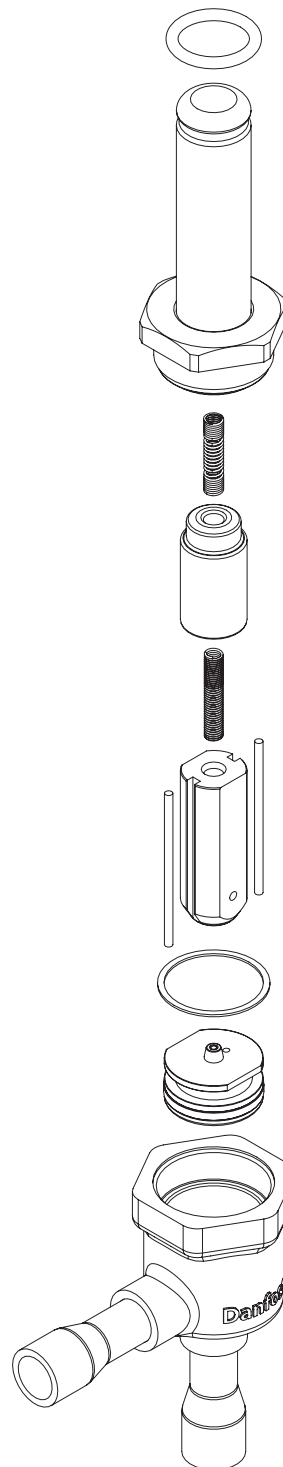
<p style="text-align: center;">NC copper connections</p> 	<p style="text-align: center;">NC steel connections</p> 
<p>Refrigerants R744</p> <p>Note Pick up valves carefully from package.</p>	<p>Max. working pressure EVT with steel connections: 140 bar / 2030 psig. EVT with copper connections: 140 bar / 2030 psig.</p> <p>Note Avoid reverse flow in EVT to avoid unstable function or long term damage of valve.</p>
<p>Media temperature: 0 °C / 0 °F – 150 °C / 302 °F</p>	<p>Max. opening diff. pressure (MOPD): Coil dependent</p>
<p>Filter installation Filter is always recommended in customer system. As minimum install a 100 micron filter in front of the solenoid valve.</p> 	<p>Mounting angle and height:</p> 
<p>Brazing valve with copper connections to copper piping:</p> 	<p>Mounting valve with steel connections to Swagelok fittings:</p>  <p>Always mount valve with steel connections to Swagelok fittings according to guidelines from the fittings supplier.</p>
<p>Precaution before coil removal</p>  <p>Always disconnect power from the coil when dismantled from the valve. The coil may be damaged and there is risk of injuries and burns.</p>	<p>ID Marking - example</p> 
<p>Coil mounting and removal</p> 	<p>Mounting / dismantling of top part</p> 

Disassembly and assembly of EVT

EVT 1



EVT 2-3



Manual operation for pressure testing and service related operation:

EVT valves can be manually operated by removing the coil and force the valve open by using a solenoid valve tester (permanent magnet).