

Data Sheet

Danfoss Char-Lynn®

6K Swing Motor with Brake

The Danfoss orbital motor portfolio for mini-excavators has been expanded with the New Danfoss Char-Lynn® 6K Swing Motor direct drive with integrated parking brake, suitable for mini-excavators up to 3.5T.

Compactness

The 6K Swing Motor can be installed in tight spaces lowering the center of gravity of the machine, due to the compact orbital technology.

Installation flexibility

Direct drive technology allows the motor to be installed in any position, providing great installation flexibility for better usage of the available space under the cabin.

Solution optimized for swing application

Orbital technology provides high starting torque and overall efficiency for improved machine operation.

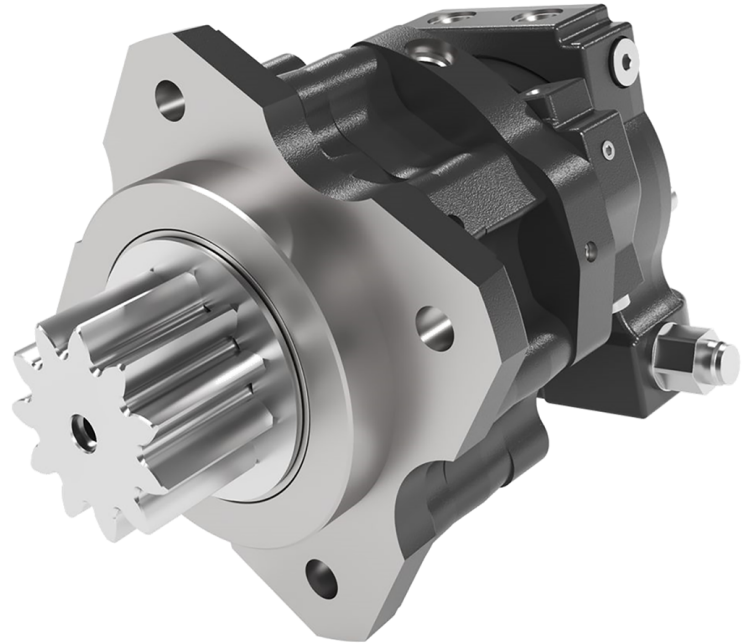
Reinforced bearings with high side load capability guarantee longer life. The special Geroler® design secures excellent low speed performance, load holding, and reduced backlash for more precise bucket control.

Direct drive, integrated pinion gear and shockless valve makes for a compact, low noise, high mechanical efficiency, and easy maintenance solution.

Two application specific motor configurations are available: Swing function and attachment with large pinion and heavy duty bearings.

Features

- Compact direct drive orbital technology
- Integrated 1400Nm parking brake
- Load holding orbital design
- Direct drive: low noise and long life
- High quality and reliability
- Integrated pinion gear
- Shockless valve, time delay valve and mechanical brake
- Attachment: large pinion; heavy duty bearing
- High starting torque and overall efficiency



Applications

- Mini-excavator swing function for machine up to 3.5T
- Attachments: grapple / forestry heads

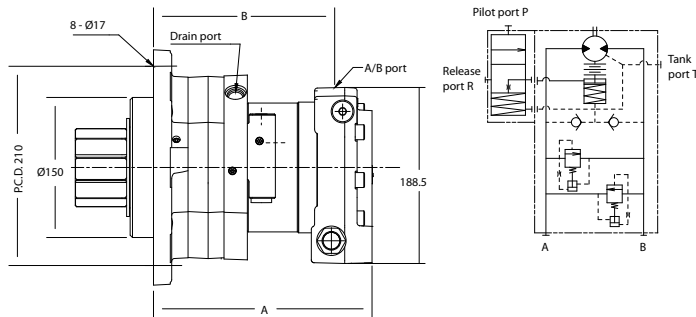
Specifications

Type	Displacement	Max. pressure	Max. torque	Speed	Parking brake	Swing ¹			Attachment ¹	
	cc/rev	bar [psi]	N-m	rpm	N-m	Parking brake	Shockless relief valve	Time delay valve	Relief valve	Counterbalance valve
6P*25	245	245 [3550]	956	80	1400	X	X	O	X	X
6P*31	311	240 [3480]	1185			X	X	O	X	X
6P*35	351	205 [2970]	1143			X	X	O	X	X
6P*39	390	200 [2900]	1242			X	X	O	X	X
6P*44	440	200 [2900]	1400			X	X	O	X	X
6P*49	490	180 [2610]	1400			X	X	O	X	X

¹ X = standard | O = option

Dimensions

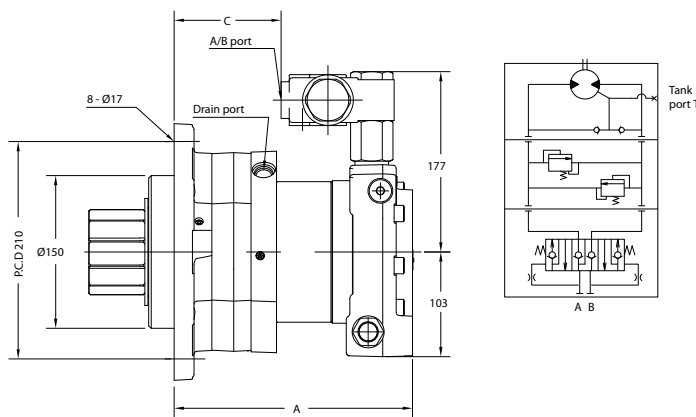
Swing motor



Swing motor variable dimensions

Displacement (cc/rev)	A (mm)	B (mm)
245	207	163
311	214	171
351	219	175
390	223	179
440	228	185
490	234	191

Attachment motor



Attachment motor variable dimensions

Displacement (cc/rev)	A (mm)	C (mm)
245	207	78
311	214	85
351	219	90
390	223	94
440	228	99
490	234	105

Danfoss can accept no responsibility for possible errors in catalogues, brochures and other printed material. Danfoss reserves the right to alter its products without notice. This also applies to products already on order provided that such alterations can be made without subsequent changes being necessary in specifications already agreed. All trademarks in this material are property of the respective companies. Danfoss and the Danfoss logotype are trademarks of Danfoss A/S. All rights reserved.