

Data Sheet

PLUS+1[®] Service Tool Add-on License

PLUS+1[®] add-on licenses

Add-on licenses provide additional features in the PLUS+1[®] Service Tool to reduce time to market, increase productivity of the PLUS+1[®] developer, and add differentiation to your PLUS+1[®] Service Tool applications.

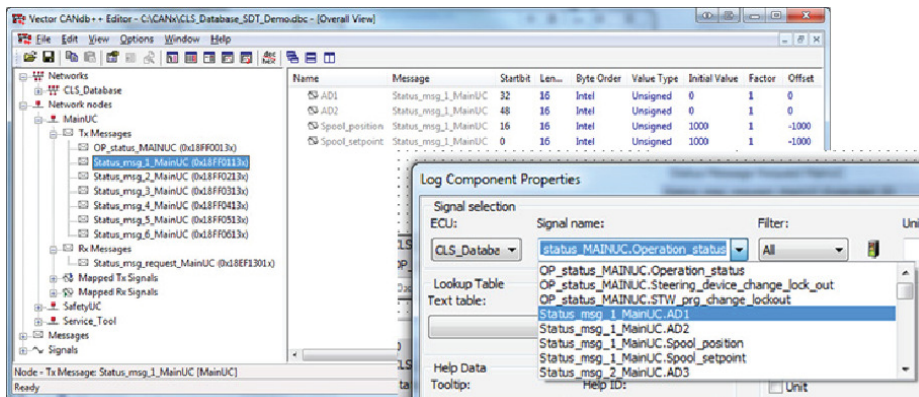
Product highlights

The add-on package for the PLUS+1[®] Service Tool provides application software developers tools for converting CAN bus signals, and automating and differentiating PLUS+1[®] Service Tool screens.



Features

- CAN Xplorer design functionality
 - Bi-directional conversion of CAN and Service Tool signals
 - Enable custom HTML, CSS, and JavaScript scripting automation through the API set.
- Scripting Interface



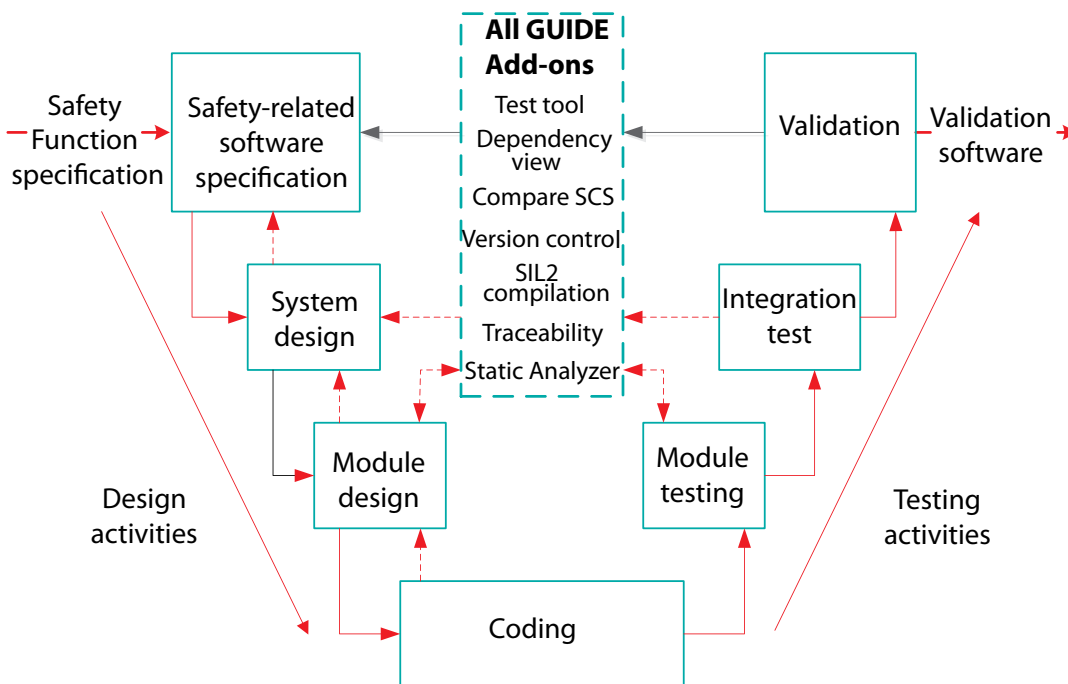
Comprehensive technical literature is online at www.danfoss.com

PLUS+1® GUIDE Development Tool

- Symbols and components are selected from a palette and dropped onto the drawing space.
- Danfoss developed function blocks are available for common control requirements such as PID control, ramp, filter, and command signal profiles.
- GUIDE compliance blocks allow rapid integration of input and output signals from Danfoss electrohydraulic products through the use of predetermined signal types and parameter default settings.
- Graphical programming reduces the number of steps required to develop an application; source code is generated directly from the application drawing to reduce coding errors.
- On-line and context-sensitive help allows easy comprehension of product features.
- Application data logging aids machine diagnostics.

Service Tool

PLUS+1® includes an easy to use download feature. Application files are downloaded to the target controller via CAN. The download tool allows PLUS+1® users to access all of the controllers and intelligent modules on the PLUS+1® network. Simple, fast, reliable communications between a controller, or network of controllers, and a PC USB port is accomplished with the CG150 CAN/USB gateway.





Ordering information

Description	Part number
Library-Work Function	11179529
Library- Propel Application Library (Advanced)	11182154
Integration-Simulink S Function	11179531
PLUS+1 [®] GUIDE Professional	11179523
PLUS+1 [®] GUIDE Add-ons	11179525
PLUS+1 [®] Service Tool Add-ons	11179527

Related product

Description	Part number
CG150-2 CAN/USB Gateway Interface Communicator	11153051

Reference literature (on line at www.danfoss.com)

Title	Literature ID
PLUS+1 [®] GUIDE User Manual	AQ152886483724
PLUS+1 [®] Service Tool User Manual	AQ152986484649
PLUS+1 [®] Service Tool Design Manual	AQ152986485048

Comprehensive technical literature is online at www.danfoss.com
