

Data sheet

Non return valve

VCM 46

2½ Vic outlet

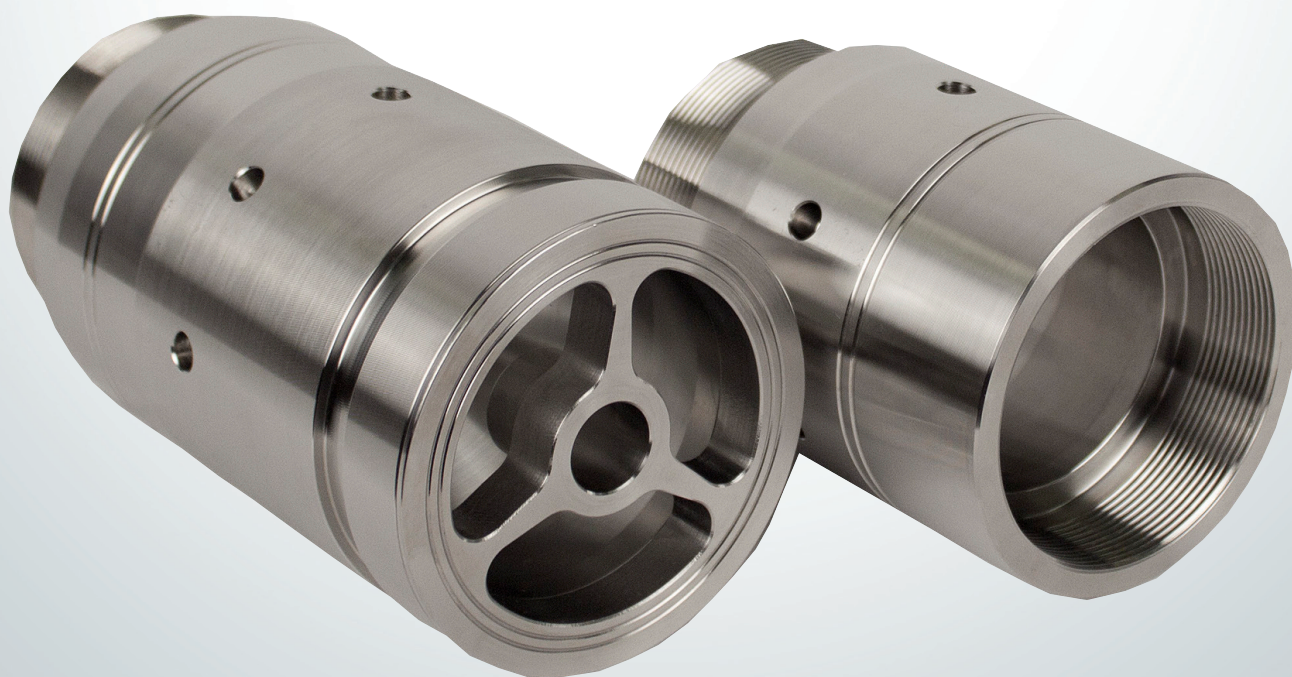
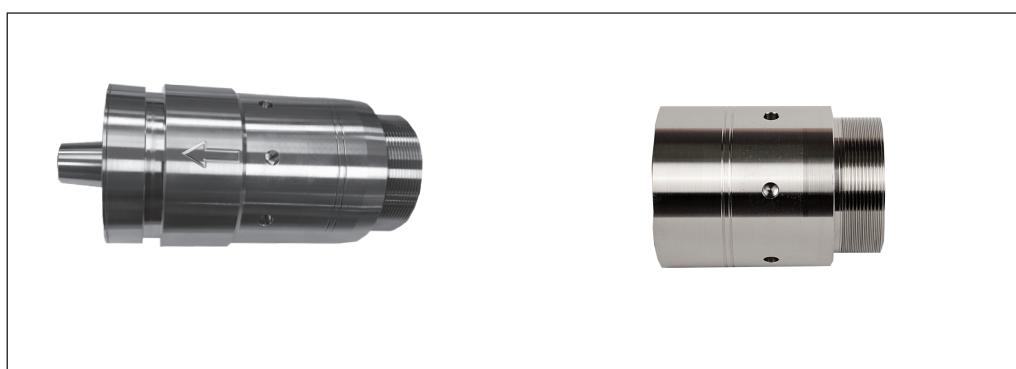


Table of Contents	1.	Introduction	2
	2.	Features	2
	3.	Technical data and code numbers	2
	4.	Filtration.....	3
	5.	Dimensions	3
	6.	Flow versus pressure charts	3
	6.1	VCM 46	4

1. Introduction

The valve incorporates a conical poppet design, which ensures sealing when used with a low viscosity medium such as water. Typically used in connection with APP 38 - 46 pumps.

If the recommendations in the manual are not followed, Danfoss reserves the right to void the warranty.



VCM 46 2½ Vic

Extension for 46 2½ Vic

The non return valve is produced in Super Duplex stainless steel W. Nr. 1.4410.

The sealing is a NBR O-ring.

The valve is available for flows up to 45 m³/h or 766 l/min (202) gpm).

3. Technical data and code numbers

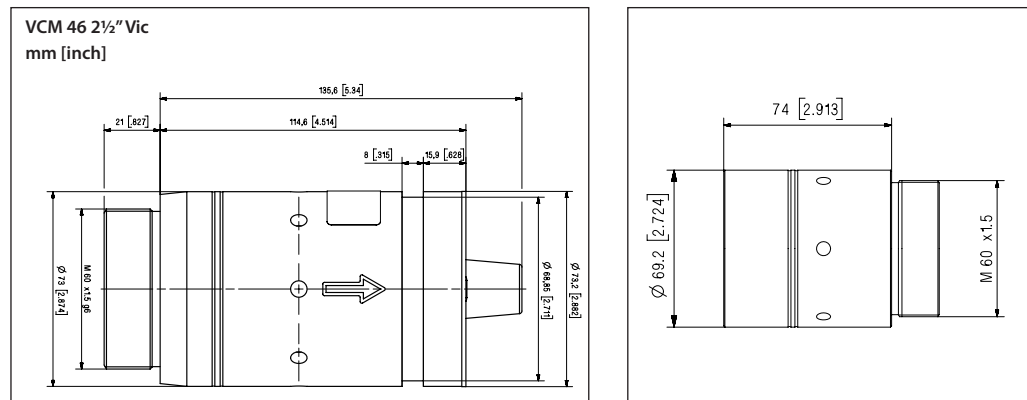
Type	Max. pressure barg (psig)	Flow continuously l/min (gpm)	Opening pressure barg (psig)	Pressure loss at max. flow barg (psig)	Inlet connection	Outlet connection	Code number
VCM 46	124 (1800)	766 (202)	0.2 (2.9)	0.55 (8.0)	M60 x 1½	Vic. 2½" (73 mm) Style 77DX ¹⁾	180H0059
Important! Due to the design and dimensions of an APP 46 pump, bell-housing and IEC motor, a dampening flange on the bell-housing is standard when an IEC 315 motor is selected. If this dampening flange for some reason is deselected, an extension for the non-return valve may be needed in order to mount the pipe or hose with Victaulic clamps.					M60 x 1½	M60 x 1½	180Z0624

¹⁾ The installation instruction for style 77DX is located in the Victaulic document I-100 Field Installation Handbook (<http://static.victaulic.com>)

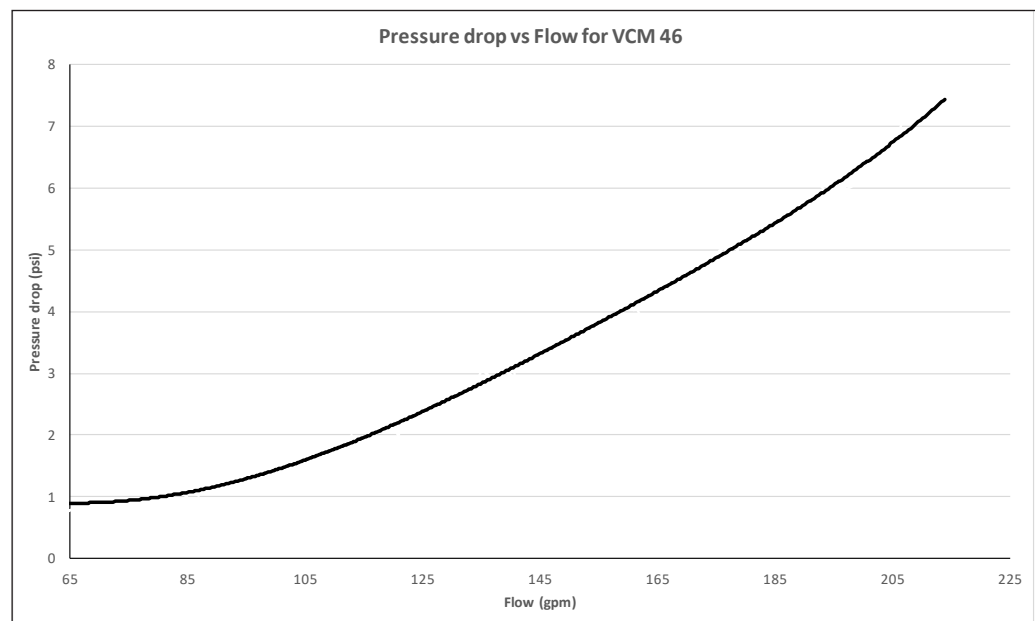
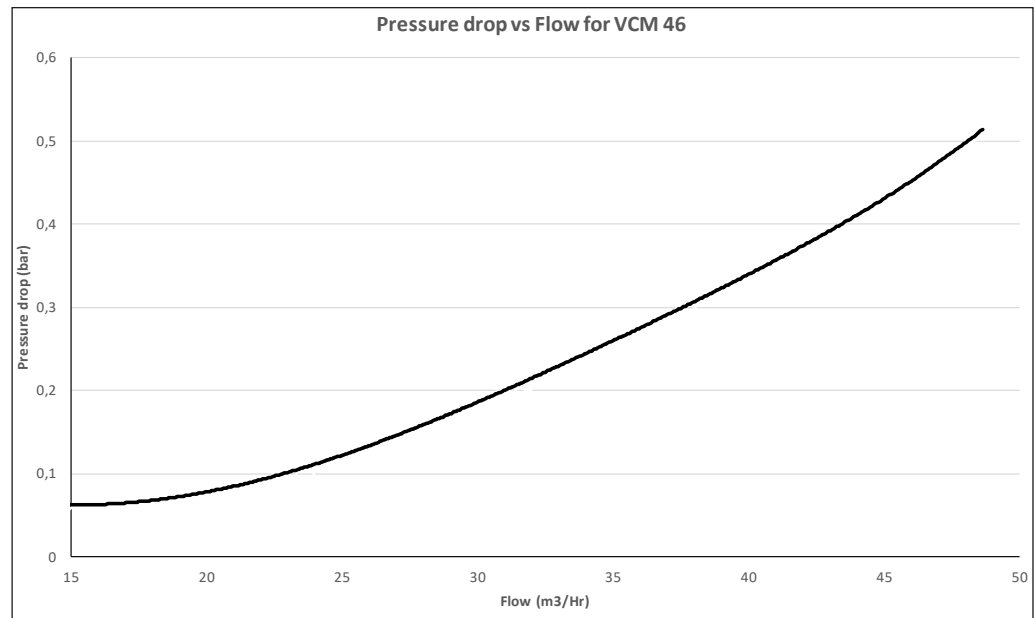
4. Filtration

The fluid must be clean and free from abrasive sediments.

5. Dimensions



Victaulic® is a registered trademark of Victaulic Corporation Inc.

6. Flow versus pressure charts**6.1 VCM 46****Danfoss A/S**

High Pressure Pumps • danfoss.com • +45 7488 2222 • highpressurepumps@danfoss.com

Any information, including, but not limited to information on selection of product, its application or use, product design, weight, dimensions, capacity or any other technical data in product manuals, catalogues descriptions, advertisements, etc. and whether made available in writing, orally, electronically, online or via download, shall be considered informative, and is only binding if and to the extent, explicit reference is made in a quotation or order confirmation. Danfoss cannot accept any responsibility for possible errors in catalogues, brochures, videos and other material. Danfoss reserves the right to alter its products without notice. This also applies to products ordered but not delivered provided that such alterations can be made without changes to form, fit or function of the product.

All trademarks in this material are property of Danfoss A/S or Danfoss group companies. Danfoss and the Danfoss logo are trademarks of Danfoss A/S. All rights reserved.



Danfoss A/S

High Pressure Pumps • danfoss.com • +45 7488 2222 • highpressurepumps@danfoss.com

Any information, including, but not limited to information on selection of product, its application or use, product design, weight, dimensions, capacity or any other technical data in product manuals, catalogues descriptions, advertisements, etc. and whether made available in writing, orally, electronically, online or via download, shall be considered informative, and is only binding if and to the extent, explicit reference is made in a quotation or order confirmation. Danfoss cannot accept any responsibility for possible errors in catalogues, brochures, videos and other material. Danfoss reserves the right to alter its products without notice. This also applies to products ordered but not delivered provided that such alterations can be made without changes to form, fit or function of the product.

All trademarks in this material are property of Danfoss A/S or Danfoss group companies. Danfoss and the Danfoss logo are trademarks of Danfoss A/S. All rights reserved.