



INSTRUCTIONS INSTALLATION OF MOTOR CABLE CLAMP BRACKET FOR VLT[®] FRAMES D3, D4 AND E2 (IP00)

This instruction sheet is for the installation of the motor cable clamp brackets for VLT[®] frame D3, D4 and E2 drives (IP00/Chassis). Pages 2 and 3 pertain to the D3 and D4 frame drives, pages 4 and 5 pertain to the E2 frame drive.

Kit Part Numbers

VLТ Frame	Kit Part Number
D3	176F1774
D4	176F1746
E2	176F1745

Kit Contents

- Cable clamp bracket
- Cable clamps
- Hardware
- 175R1109, Instructions

Required Tools

- Metric Socket Set, 7-19mm
- Socket Extensions
- Torx Driver Set: T10-T40
- Torque Wrench: 0.7-6 N-M (6-50 in-lbs)

Torque Requirements

- M5/T25 Torx screws: 2.3 N-M (20 in-lbs)

INSTRUCTIONS FOR D3 AND D4 FRAME FREQUENCY CONVERTER

1. Install mounting tabs over studs as shown and secure with nuts. Do this on the left and right side. Reference Figures 1, 2 and 3.

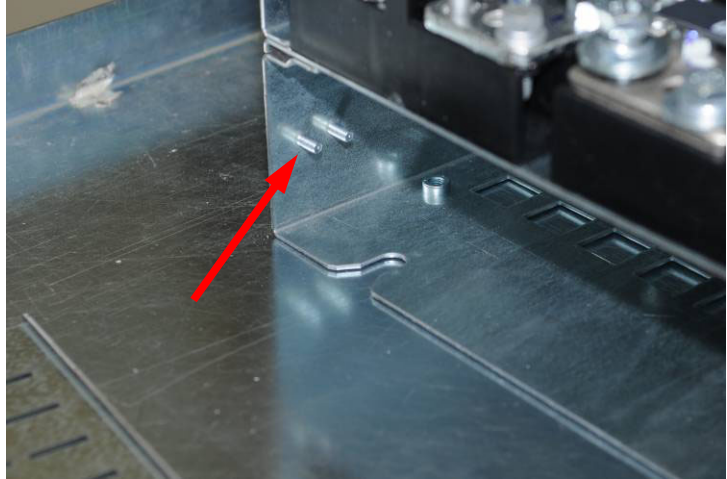


Figure 1. Studs for mounting tabs.



Figure 2. Mounting tab installed on left side of D3/D4 frame.

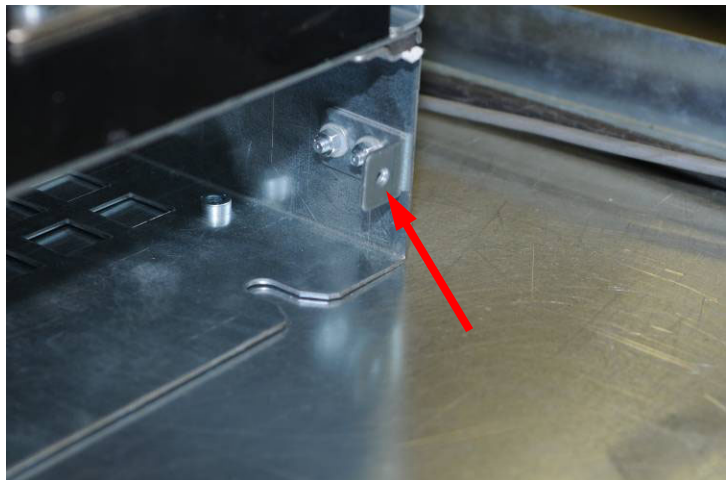


Figure 3. Mounting tab installed on right side of D3/D4 frame.

2. Mount cable-clamp bracket on the mounting tabs and secure using the screws supplied with the kit. Do this on the left and right side. Reference Figures 4, 5 and 6.

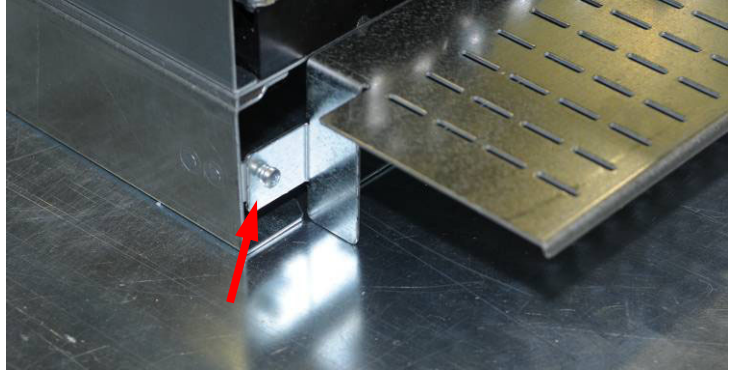


Figure 4. Cable-clamp bracket mounted on mounting tab, left side of D3/D4 frame.

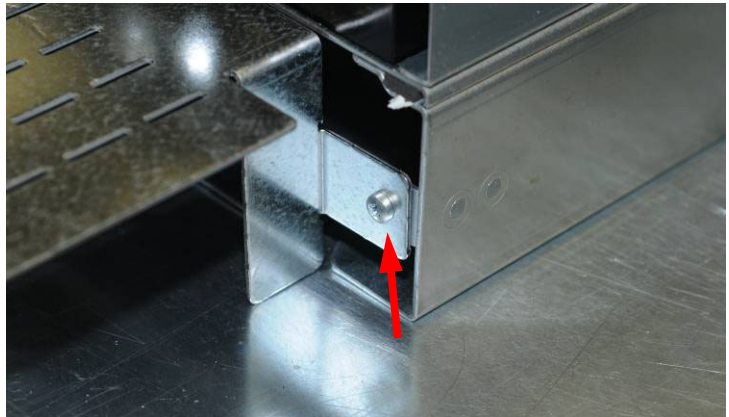


Figure 5. Cable-clamp bracket mounted on mounting tab, right side of D3/D4 frame.

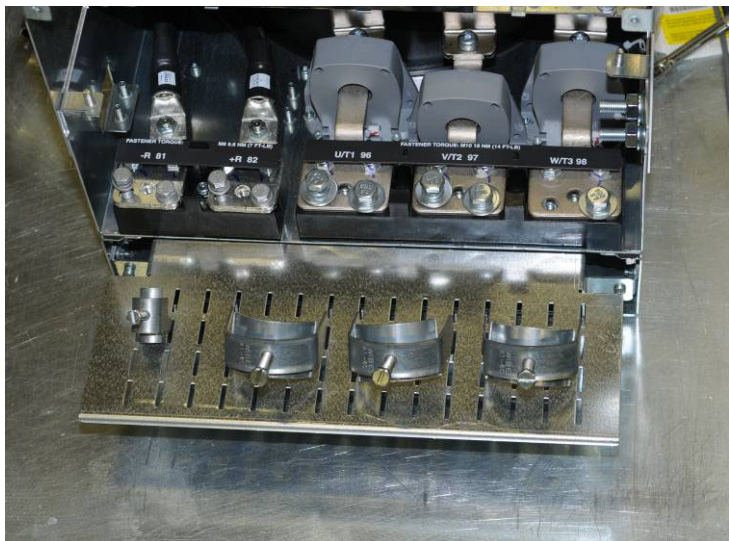


Figure 6. Cable-clamp bracket mounted on D3 frame.

INSTRUCTIONS FOR E2 FRAME FREQUENCY CONVERTER

1. Install mounting tabs over studs as shown and secure with nuts. Do this on the left and right side. Reference Figures 7 and 8.



Figure 7. Mounting tab installed on left side of E2

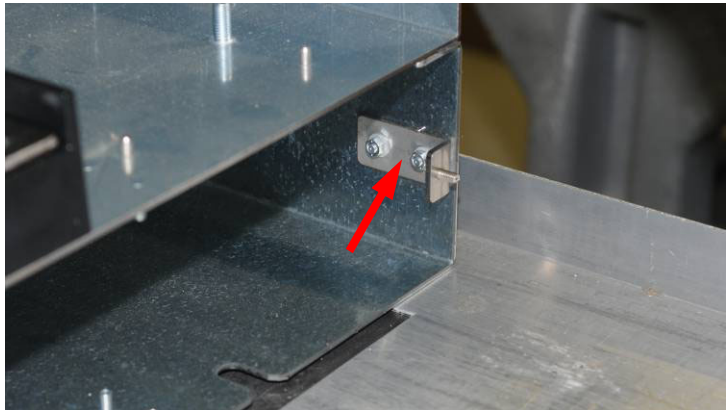


Figure 8. Mounting tab installed on right side of E2 frame.

2. Mount cable-clamp bracket on the studs that are located on the mounting tabs and secure using the nuts supplied with the kit. Do this on the left and right side. Reference Figures 9, 10 and 11.



Figure 9. Cable-clamp bracket mounted on mounting tab, left side of E2 frame.

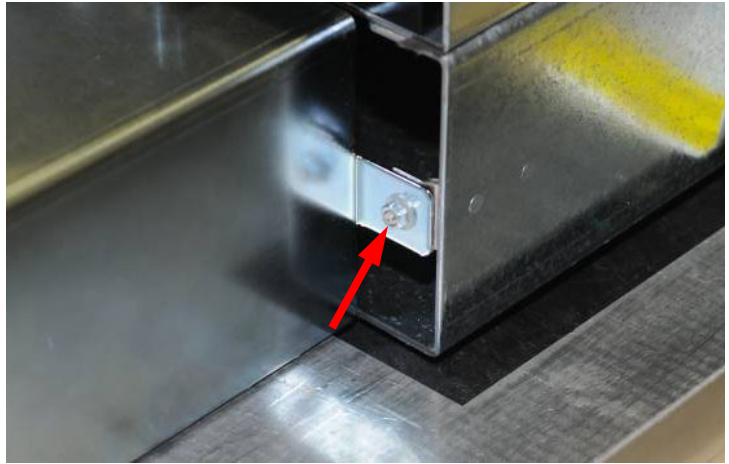


Figure 10. Cable-clamp bracket mounted on mounting tab, right side of E2 frame.



Figure 11. Cable-clamp bracket mounted on E2 frame.