

ENGINEERING
TOMORROW

Danfoss

Product Brochure

Airflex®

Coremo pneumatic brakes and accessories

Safe, reliable pneumatic braking solutions



VICKERS
by Danfoss

Quality and safety in industrial brakes



Our services

Drawing on a long tradition in the manufacturing of brakes and clutches, Danfoss and Coremo Ocmea have partnered to become a global leader in safe, reliable solutions for industrial applications including the steel industry, wire and cables, metal forming, mining, and more! We offer a broad range of pneumatic caliper brakes, as well as services with a high degree of customization.

Design services

Our goal is to design and provide a braking solution suitable for your specific application, through a process characterized by continuous research and development, cost optimization, customization, and FEM analysis.

Products

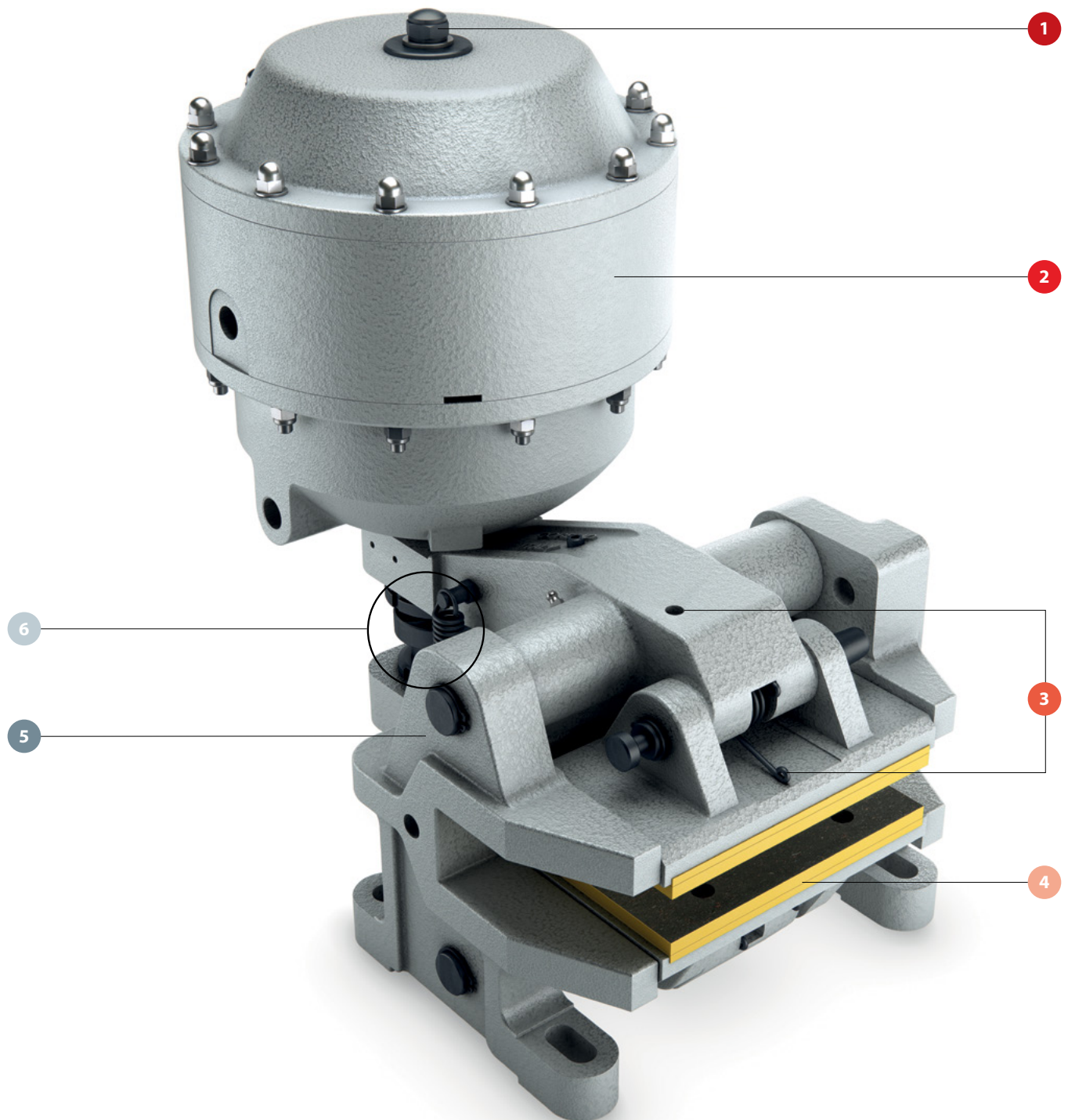
A wide range of brakes and accessories are available and verified by both internal and external quality tests. Our product range includes hydraulic brakes, pneumatic brakes, multi-disc brakes, water-cooled brakes, air-cooled brakes, customized brakes, clutches, hydraulic power units, discs, couplings, and accessories.

Supply chain services

A large network of sales representatives, distributors, and support staff allows us to meet our customers' needs and provide flexible service worldwide. We offer quick response time, stocked parts, short delivery terms, and customized labeling.

Pneumatic caliper brakes

A legacy of meticulous design, high-quality components, and reliable production



- 1 Retaining screw/silencer**
To guarantee safety during mounting operations; serves as air silencer once the brake is mounted

- 2 Thruster**
Low-weight aluminum thrusters

INSIDE

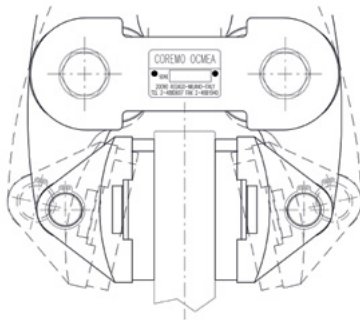
Piston

Steel-piston with hardened rod pusher

Spring set

Modular spring set available to meet different clamping force requirements

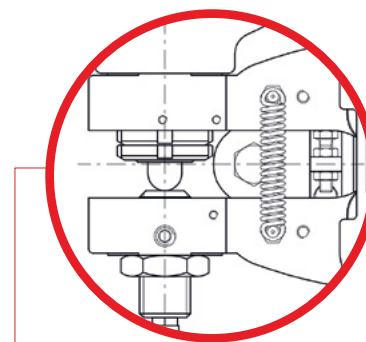
- 3 Pad self-alignment**
To get the perfect alignment between pads and disc surface



- 4 Friction lining**
Selection of friction material to optimize the braking system performance

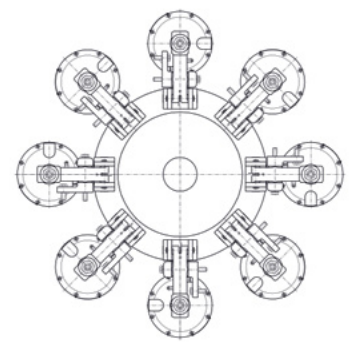
- 5 Body**
Spheroidal cast iron body designed to increase the thruster force

- 6 Wear compensation system**
To guarantee high performance and safety



Return spring

To open the brake arms if braking is not required



Inclined mounting kit

To mount the brake in any position

Danfoss Coremo pneumatic brakes

Air-applied pneumatic caliper brakes



Normally specified for stopping or tensioning applications. Forces vary depending on the pressure of the air supplied; the maximum operating pressure is 6 bar.

Braking force
0.6 kN to 37 kN

Spring-applied pneumatic caliper brakes



Normally specified for emergency or parking applications. The clamping force of each model is generated by helical springs that allow low reaction times. All brakes operate up to a maximum pressure of 6 bar.

Braking force
1 kN to 37.5 kN

Dual (combined air- and spring-applied)

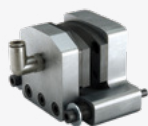


Specified for applications that require both continuous and emergency braking. The advantage is that a single thruster can manage both, eliminating the need for two separate brakes.

Pneumatic brakes

Our product offering covers a clamping force range that meets the conditions required by various applications. The quality of the product and its long life cycle are ensured by meticulous selection of materials, over sixty years experience, painstaking design with the latest 2D/3D software, FEM modeling, and laboratory tests.

Air-applied pneumatic caliper brakes

**S-MAC****MICRO****MPA****MPB****A****B****C****D****E****EL****F****G/GL**

Spring-applied pneumatic caliper brakes

**MPA-N****A-N****B-N****D-N****E-N****EL-N****F-N****G-N****GL-N**

Dual

**A-DUAL****D-DUAL****F-DUAL****G-DUAL**

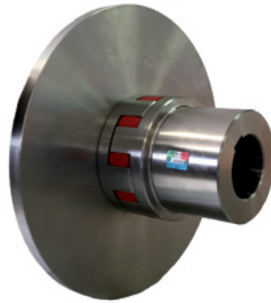
Optional products and features

Flat discs



To be combined with the caliper brakes and improve their performance.

Couplings



For fast, safe, and easy brake fitting on the machine.

On/off indicator



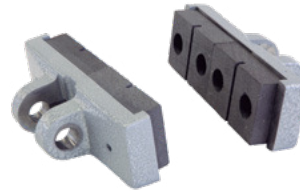
To indicate if the brake is open or closed.

Special paint and treatments



To meet specific environmental conditions or customer needs.

Double pads



To increase the heat dissipation through a larger friction surface.

Quick exhaust valve



To exhaust the air quickly; highly recommended for 3.5N/4N piston.

	MPA	MPB	A	B	C	D	E EL	F	G GL	MPA-N	A-N	B-N	D-N	E-N EL-N	F-N	G-N GL-N
Wear Compensation	-	-	●	-	●	●	●	●	●	●	●	●	●	●	●	●
Inclined Mounting Kit	○	-	●	○	●	●	●	●	●	○	●	○	●	●	●	●
Pads Self-Alignment	●	●	●	●	●	●	●	●	●	●	●	●	●	●	●	●
Wear Indicator	-	-	○	○	-	○	○	○	○	-	○	○	○	○	○	○
Double Pads	-	-	○	○	-	-	-	-	-	-	○	○	-	-	-	-
On-Off Indicator	-	-	○	○	-	○	○	○	○	-	○	○	○	○	○	○
Retaining Screw	-	-	-	-	-	-	-	-	-	-	●	●	●	●	●	●

● Standard ○ Optional - Not Available

[illegible]



Danfoss Power Solutions, Nordborgvej 81, 6430 Nordborg, Denmark, Tel. +45 74 88 22 22, Fax +45 74 65 25 80
www.danfoss.com, E-mail: info@danfoss.com

Any information, including, but not limited to information on selection of product, its application or use, product design, weight, dimensions, capacity or any other technical data in product manuals, catalogues descriptions, advertisements, etc. and whether made available in writing, orally, electronically, online or via download, shall be considered informative, and is only binding if and to the extent, explicit reference is made in a quotation or order confirmation. Danfoss cannot accept any responsibility for possible errors in catalogues, brochures, videos and other material. Danfoss reserves the right to alter its products without notice. This also applies to products ordered but not delivered provided that such alterations can be made without changes to form, fit or function of the product. All trademarks in this material are property of Danfoss A/S or Danfoss group companies. Danfoss and the Danfoss logo are trademarks of Danfoss A/S. All rights reserved.