

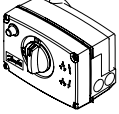

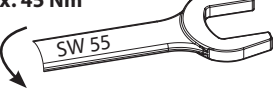
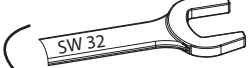
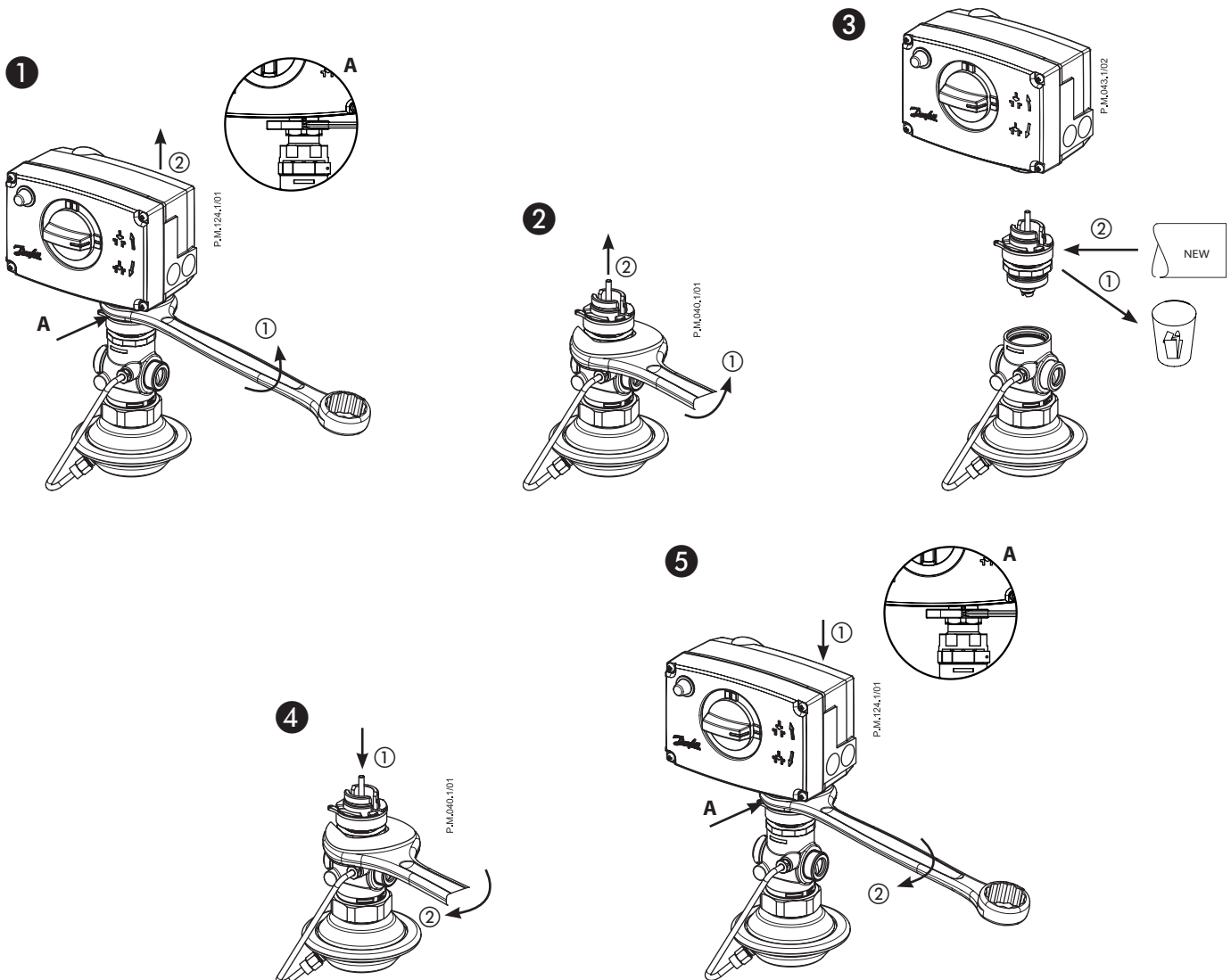


Installation Guide

# Service kits

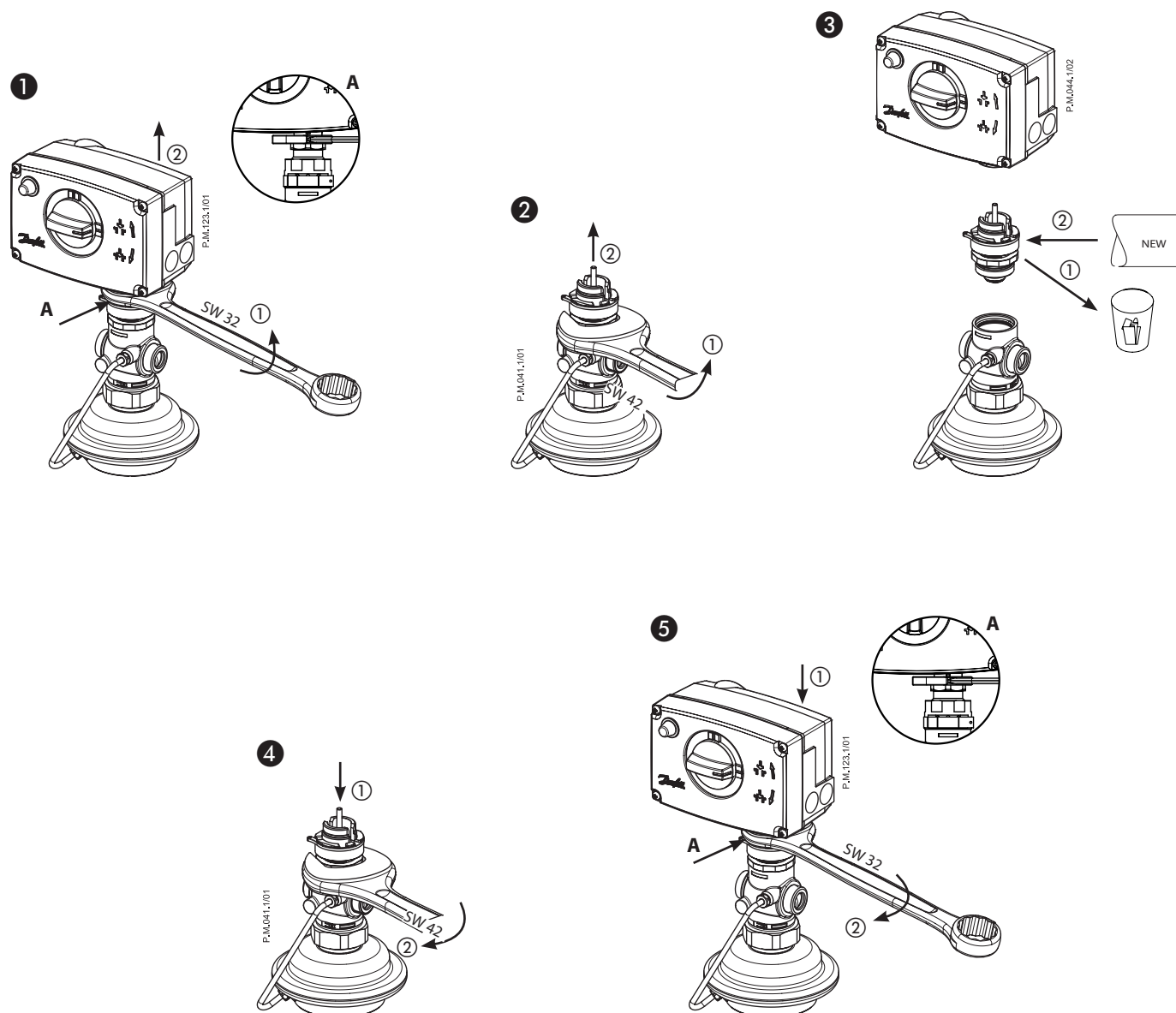
PN 16 (DN 15-32) / PN 25 (DN 15-25)	PN 25 (DN 32-50)	
		
Max. 45 Nm 	Max. 45 Nm 	SW 32 25 Nm 

## PN 16 DN 15-32



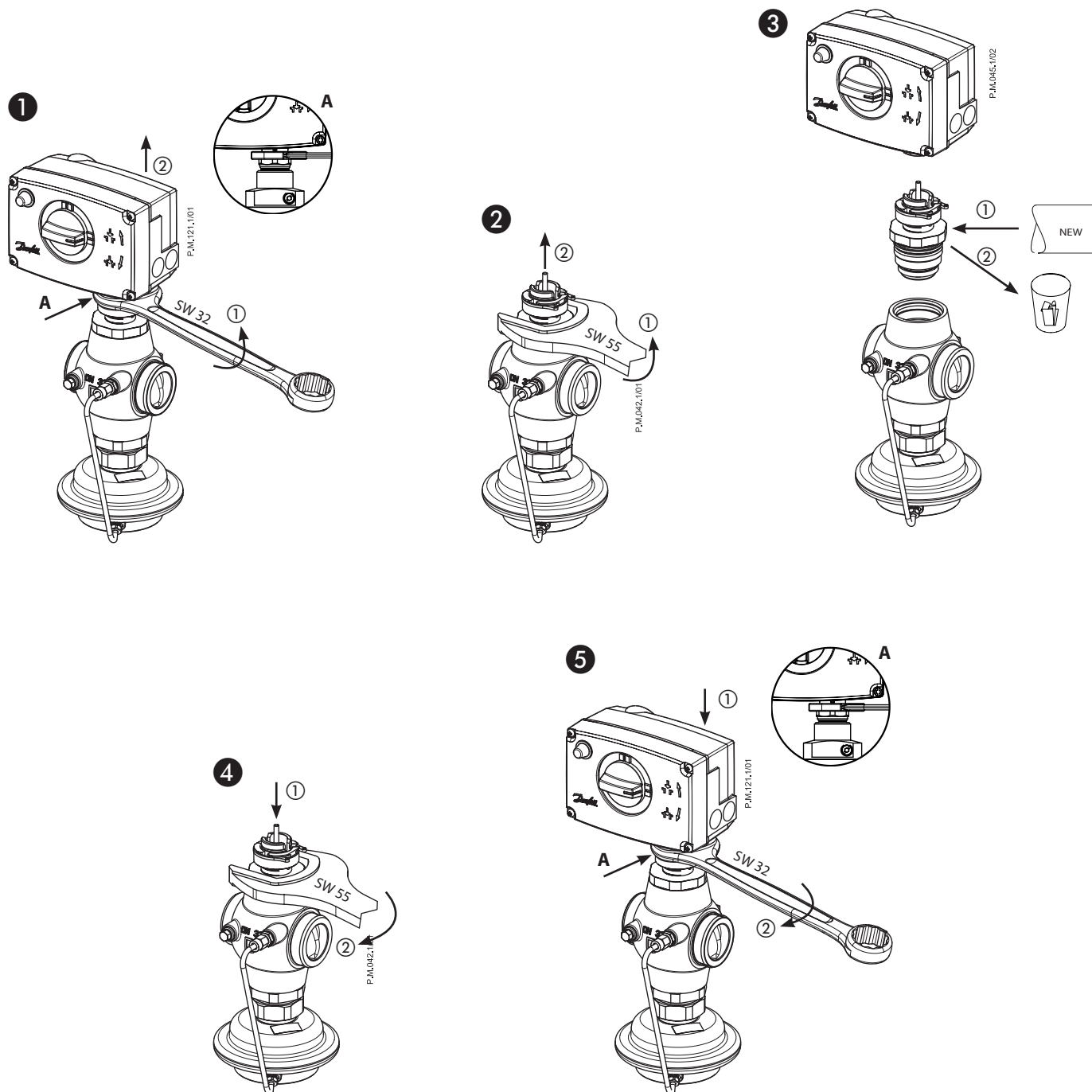
## Service kits

PN 25 DN 15-32



## Service kits

PN 25 DN 32-50





## Service kits

---