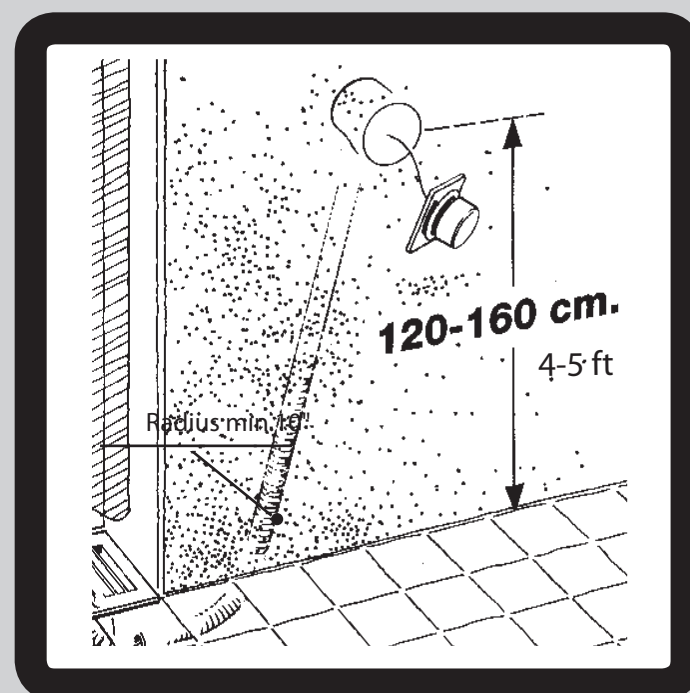
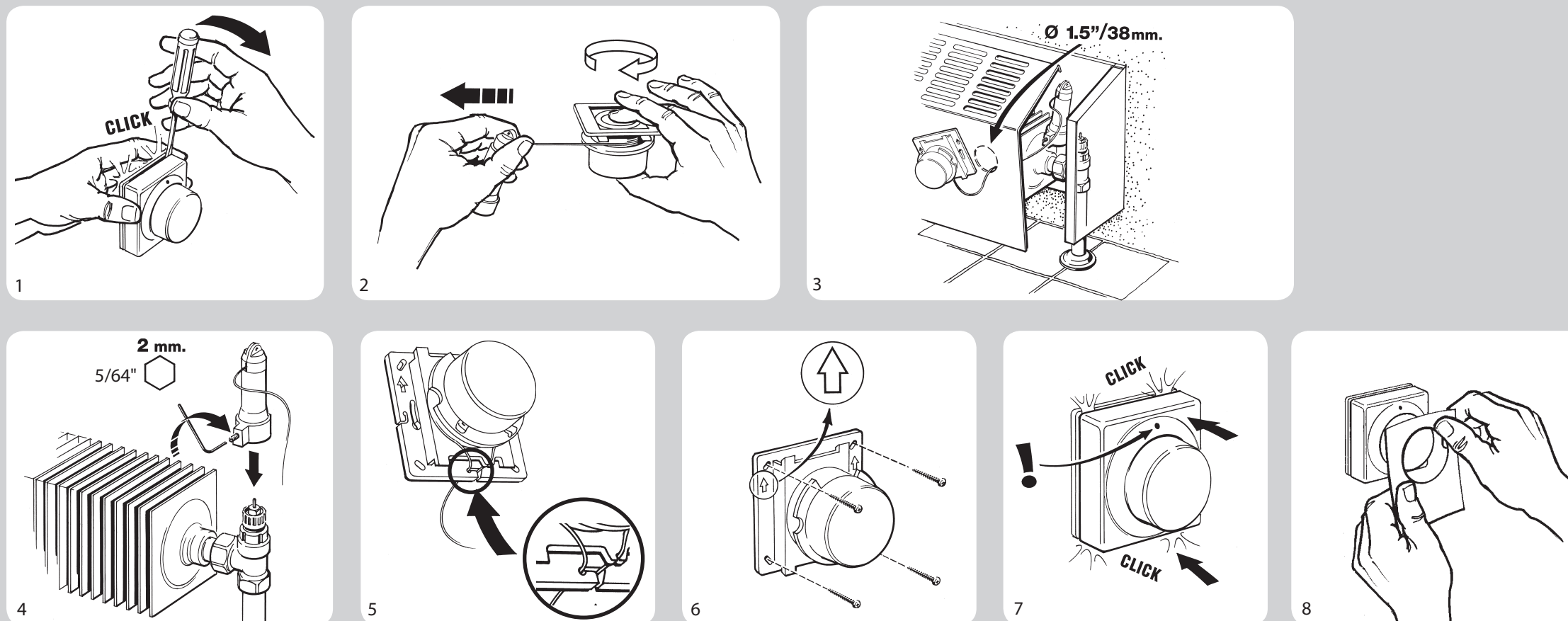
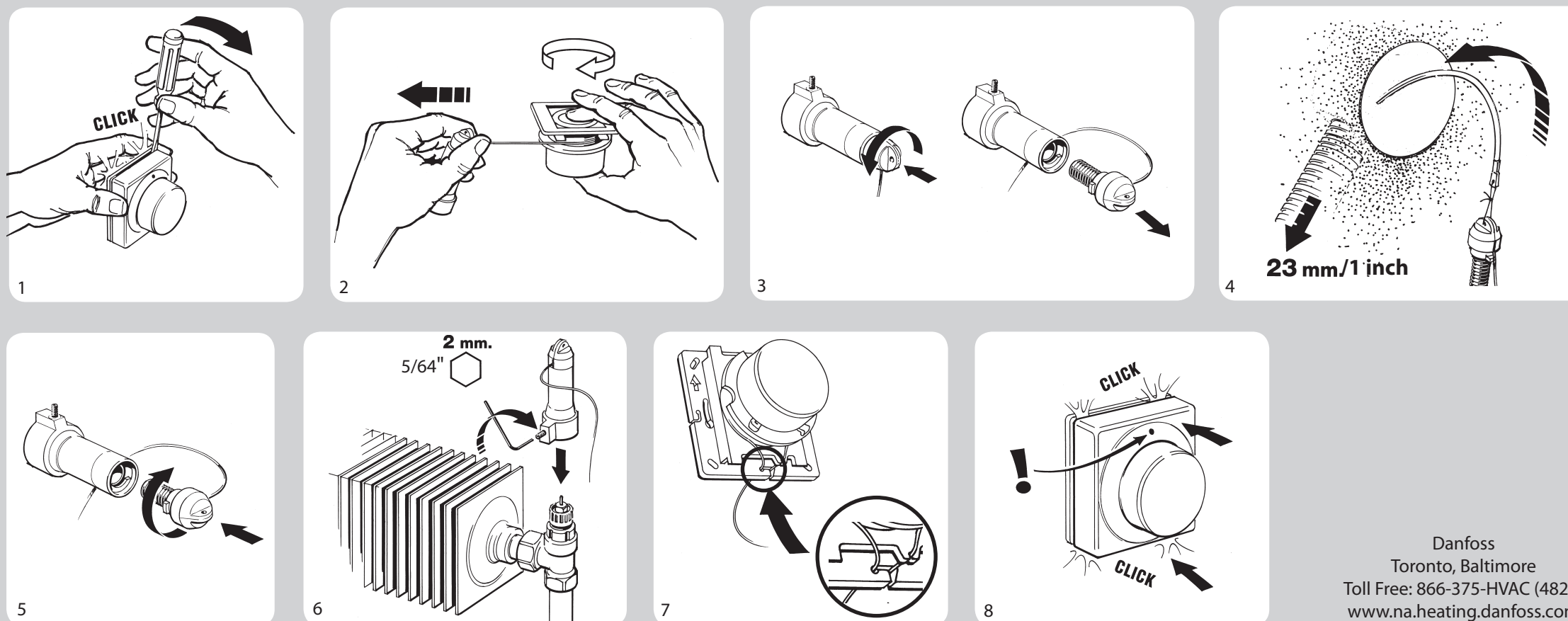


Mounting on convector
with Danfoss RA 2000 valve

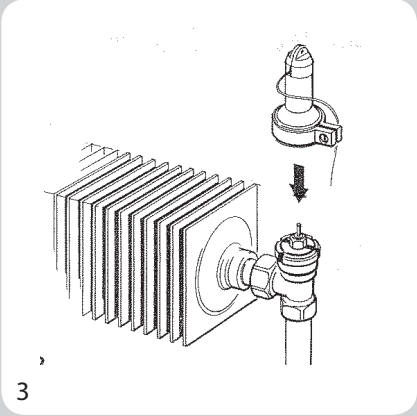
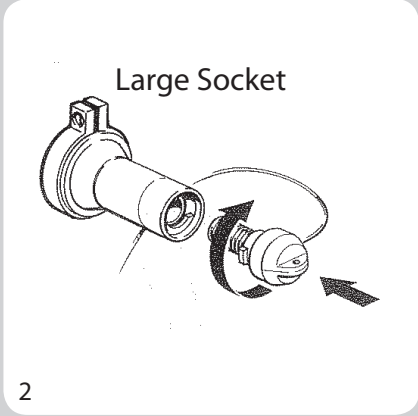
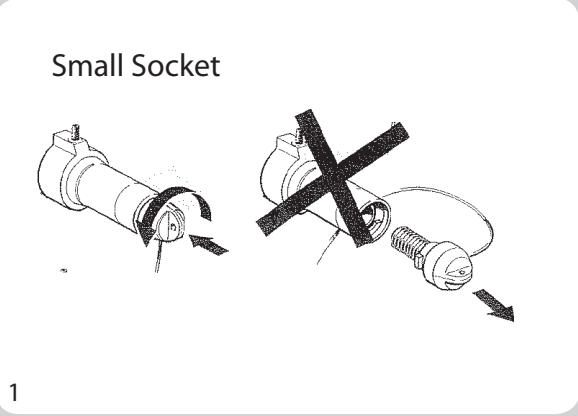
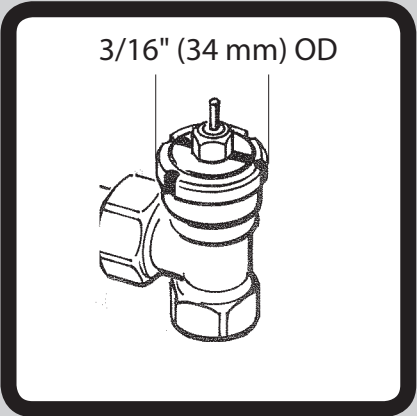


Installing operator through conduit
with Danfoss RA 2000 valve

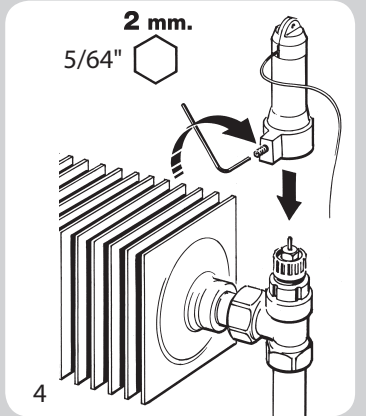
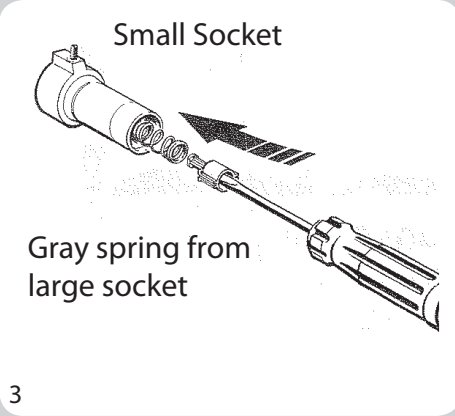
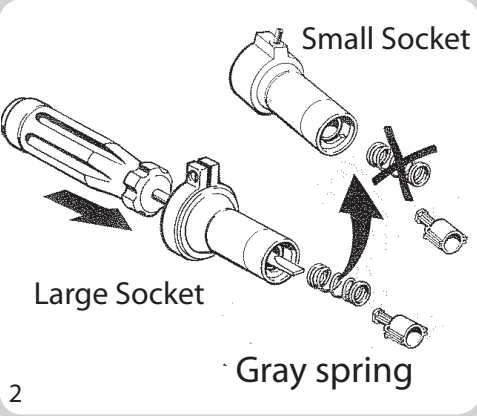
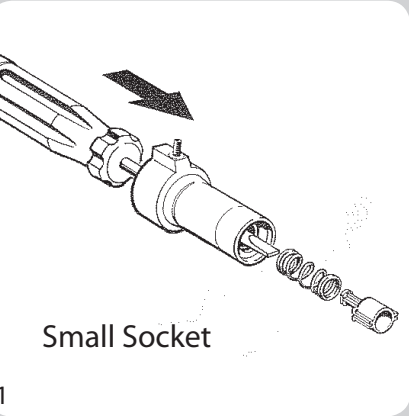


If this operator is being installed on a RAV, VMT or KOVM valve, it is necessary to replace the pre-attached small socket with the large socket included in product package.

RAV/VMT/KOVM valves have a larger operator connection than RA 2000 valves.

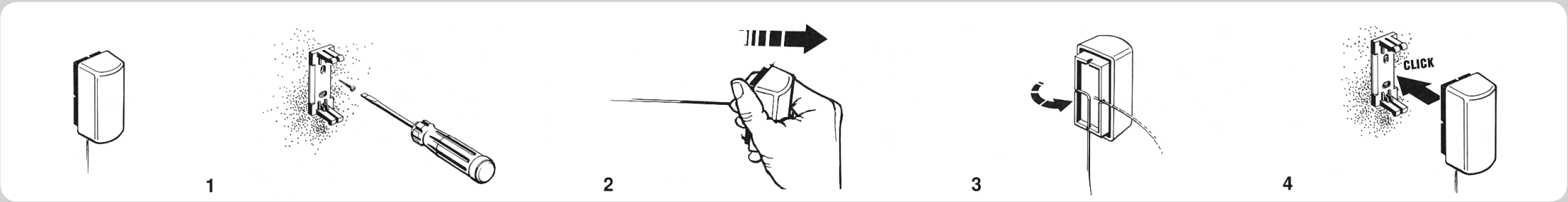


If this operator unit is being installed on a RA valve fitted with a RA to RA 2000 adapter (013G8070), the socket spring must be replaced with the gray spring from the large socket included in the product package.



Mounting the separate temperature sensor

The sensor may be mounted under the heating element or on the wall where it will properly sense the room temperature



Limiting and blocking the setting range

Upper limit setting (max. setting)

Lower limit setting (min. setting)

Locking setting is done by combining the upper & lower limiter settings

