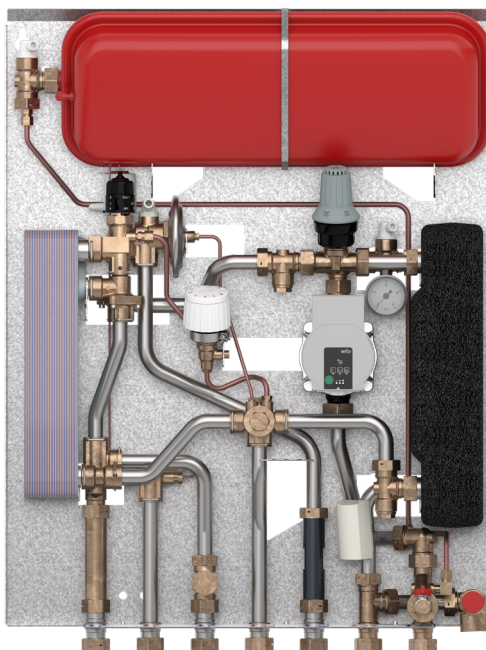


Data Sheet

VX-F flat station for indirect heating and DHW

District heating substation for indirect heating and instantaneous domestic hot water. For apartments, single- and multi-family houses



Application

The VX-F is a compact substation featuring high performance and simple operation. The VX-F is especially suitable for two-pipe systems and systems with radiator or floor heating, supplied from a secondary connected district heating system, a block heating system or a centrally located boiler system in a block of flats.

The VX-F range is available as built-in variant with a recess box in sizes W 690 x H 1350 x D 150 and W 850 x H 1350 x D 150 or as wall-mounted variant.

The VX-F stations are prepared for mounting separately or for implementation with a VX-F distribution unit with 2 to 12 heating circuits.

District heating (DH)

The flat station is prefabricated with interconnecting components such as differential pressure controller, strainer, thermal bypass and fitting piece and sensor pockets for insertion of a heat meter.

Heating (HE)

The heating side consists of plate heat exchanger, safety valve, manometer, expansion vessel and A-labelled low-energy circulation pump. A flow temperature controller, type FTC is used for flow temperature control of the heating system. The VX-F stations are equipped differently depending on the application, - floor heating or radiator heating. VX-F stations for floor heating are equipped with a safety thermostat and a zone valve RA-C / thermal actuator TWA to prevent overheating.

Domestic hot water (DHW)

The domestic hot water is prepared in the heat exchanger based on the flow principle and the temperature is regulated by the self-acting controller with inte-

grated differential pressure controller - the TPC-M.

Supreme ease of operation is obtained via the combined hydraulic and thermostatic regulation of the TPC-M controller. The flow-controlled part allows primary and secondary side flow through the heat exchanger, only when hot water is tapped and blocks the flow immediately after completion of the tapping process.

The thermostatic part controls the domestic hot water temperature.

The TPC - M controller with integrated differential pressure controller also compensates for fluctuating flow temperatures and differential pressures and thereby ensures a constant domestic hot water temperature at all times.

For registration of the cold water consumption the VX-F flat station is equipped with a fitting piece for mounting of a cold water meter in the DCW inlet.

Options

The VX-F is equipped with bypass function as a standard and can be ordered with and without DHW circulation

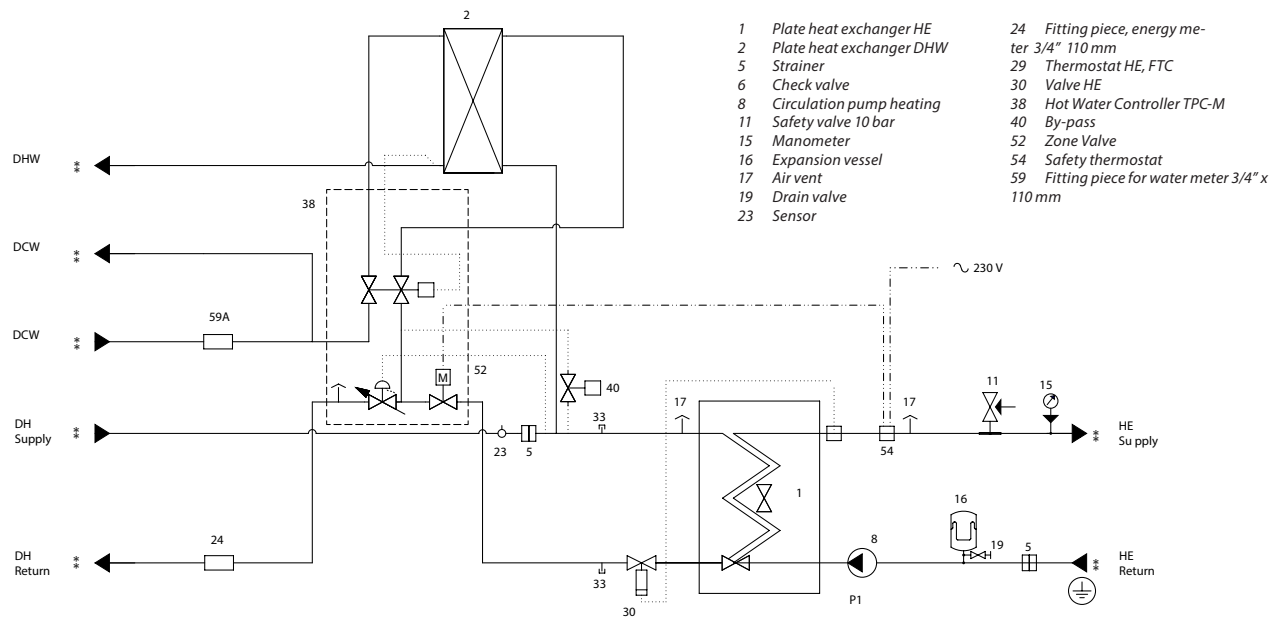
Design

All pipes are made of stainless steel. The connections are made by nuts and gaskets. The VX-F can be delivered with white-lacquered steel cover for recess mounting or for wall mounting. The VX-F is supplied without recess box and door as standard. - This is optional must be ordered separately.

FEATURES AND BENEFITS

- **Innovative, energy-saving controller** TPC-M in combination with high performance heat exchanger for on-demand water heating without no-load losses function
- **Thermostatic control of heating (HE) temperature**
- **Capacity: 15 kW HE / 37-55 kW DHW**
- **Minimal space required for installation**
- **For mounting in recess box or on the wall**
- **Pipes and heat exchanger made of stainless steel**
- **Minimized risk of lime scale and bacteria formation**

CIRCUIT DIAGRAM - EXAMPLE - Variant with floor heating and circulation

**Design specifications:**

Nominal pressure (prim/sec.): PN 16
Max. supply temperature: 100 °C (design temp.)
Min. ΔP: See capacity examples
DCW static pressure: $p_{min} = 1,5$ bar
Brazing material (HEX): Copper

Weight w/o cover.: Max. 30 kg
(incl. packing)

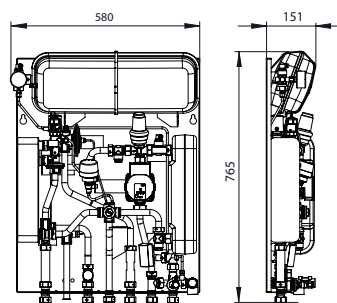
Dimensions (mm): H 580 × W 765 × D 151

Electrical supply: 230 V AC

Recirculation:

Remember to order circulation set for systems that feature DHW recirculation.

Insulation and filling line are not shown.

Dimensional sketch:**Connection sizes:**

DH: G 3/4" (ET)
DCW, DHW, HE: G 3/4" (ET)
Circulation: * R 1/2" (IT)

* option

Connections:

1. Domestic cold water (DCW)
2. Domestic hot water (DCW)
3. Domestic hot water (DCW)
4. District heating (DH) Supply
5. District heating (DH) Return
6. Heating (HE) Supply
7. Heating (HE) Return

Accessories and options:

Recess box, W850 x H1350 x D150 mm, incl. of mounting rail: 145H4908
Door + Frame for recess box W850 x H1350 mm: 145H4909
Recess box, W690 x H910 x D150 mm, incl. of mounting rail: 145H4902
Door + Frame for recess box W690 x H910 mm: 145H4903

DHW: CAPACITY EXAMPLES 10/50°C

Unit type HEX	DHW capacity [[kW]	Temperature primary Supply/Return [°C]	Pressure loss Primary [kPa]	Flow rate Primary* [l/h]	Tap load [l/min.]
XB06H-1 26 Cu/E (Type 1)	37	65/21	23	730	13,3
	43	65/22	40	850	15,3
XB06H-1 40 Cu/E (Type 2)	45	65/20	22	867	16,1
	49	65/21	30	950	17,5
XB06H+ 60 Cu (Type 3)	55	65/16	27	950	19,4
	38	55/21	27	950	13,6
XB06H-1 56 E (Type 3)	51	65/19	28	950	18,3
	34	55/24	28	950	12,5

* Energy meter not incl.

Danfoss A/S

Climate Solutions • danfoss.com • +45 7488 2222

HEATING: CAPACITY EXAMPLES

Type	Heating Capacity kW	Temp. primary [°C]	Temp. secondary [°C]	Pressure loss *prim. [kPa]	Flow rate primary [l/h]	Flow rate secondary [l/h]	Pressure loss *sec. [kPa]
XB 06H-1 16	10	70/40,35	35/60	38	287,4	346,8	5
XB 06H-1 16	10	60/30,75	30/40	62	294,4	865,2	27

* Heat meter not incl.

Any information, including, but not limited to information on selection of product, its application or use, product design, weight, dimensions, capacity or any other technical data in product manuals, catalogues descriptions, advertisements, etc. and whether made available in writing, orally, electronically, online or via download, shall be considered informative, and is only binding if and to the extent, explicit reference is made in a quotation or order confirmation. Danfoss cannot accept any responsibility for possible errors in catalogues, brochures, videos and other material. Danfoss reserves the right to alter its products without notice. This also applies to products ordered but not delivered provided that such alterations can be made without changes to form, fit or function of the product.

All trademarks in this material are property of Danfoss A/S or Danfoss group companies. Danfoss and the Danfoss logo are trademarks of Danfoss A/S. All rights reserved.