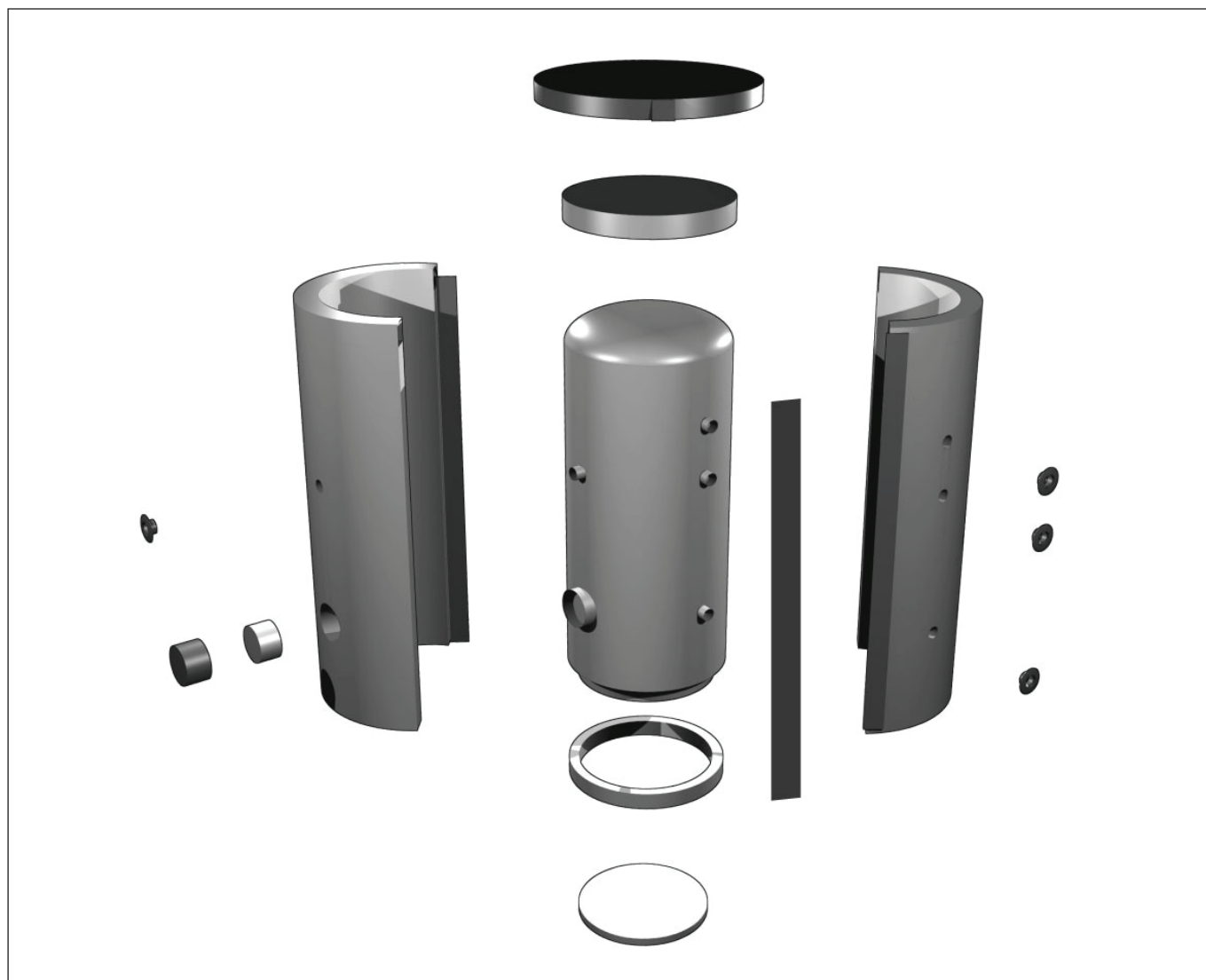
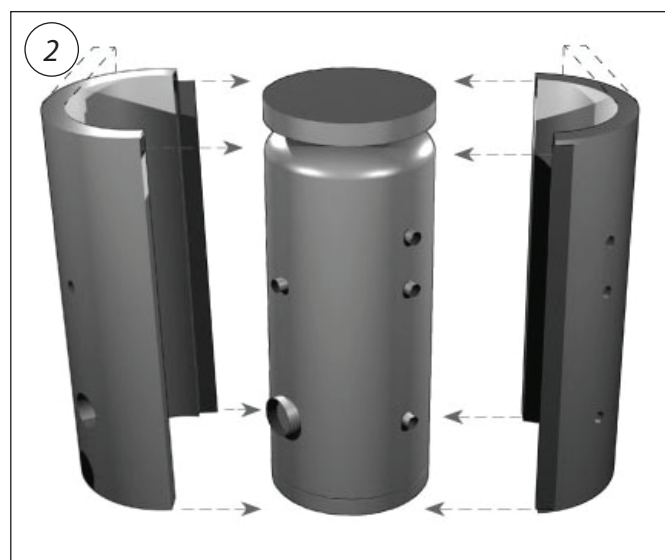


NEODUL® Thermal insulation for drinking water storage tanks & heaters

Series: SE, SES, SEK-LK, REAK, SE-RG (up to 4000l volume)

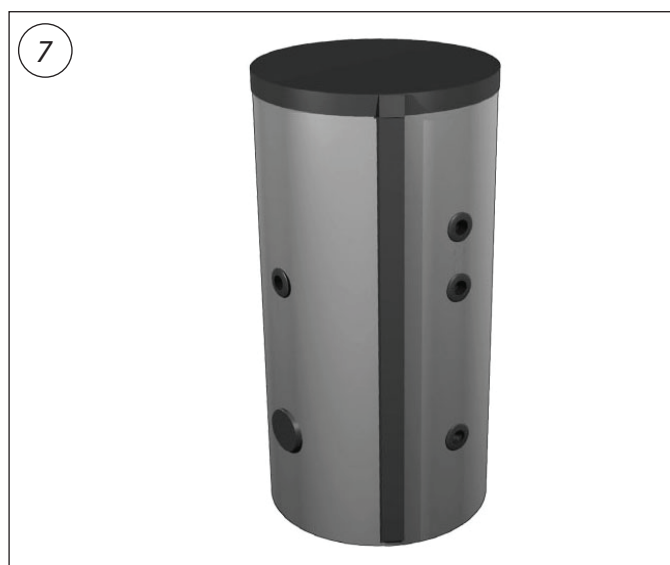
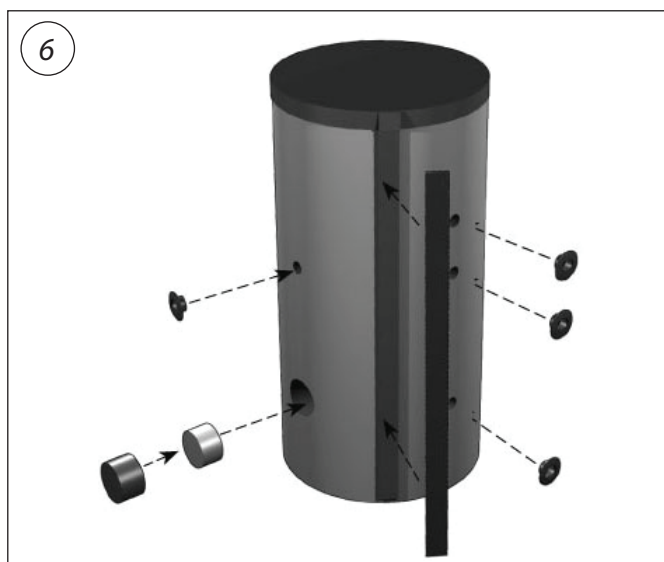
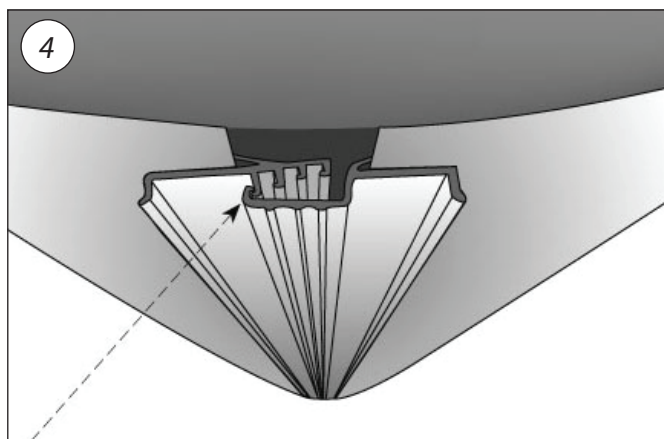
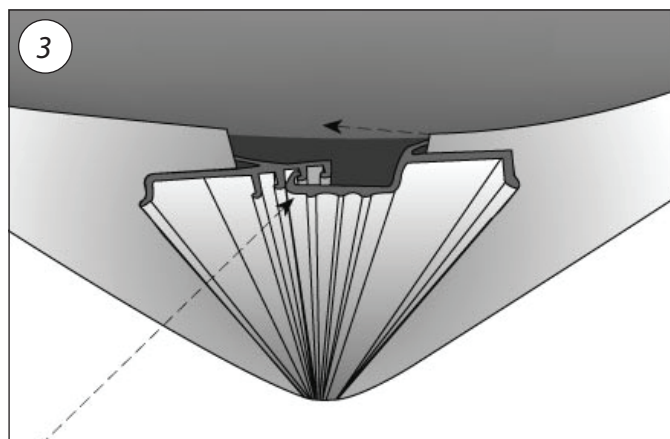


Assembly:



NEODUL® Thermal insulation for drinking water storage tanks & heaters

Series: SE, SES, SEK-LK, REAK, SE-RG (up to 4000l volume)



- Assembly stand-ring and lower ring insulation before placing the tank on site (1)
- Pre-bend insulation (shell parts) before starting assembly (2)
- place enclosed fleece-ring on the connections (pipes)
- Assembly insulation (2)
- Hook closure bar should be in the last section (3+4)
- Put cover insulation on top (5)
- Place enclosed rosettes from outside into the recesses of shell part(s) for connections (pipes) (6)

NEODUL® Thermal insulation for drinking water storage tanks & heaters

Series: SE, SES, SEK-LK, REAK, SE-RG (up to 4000l volume)

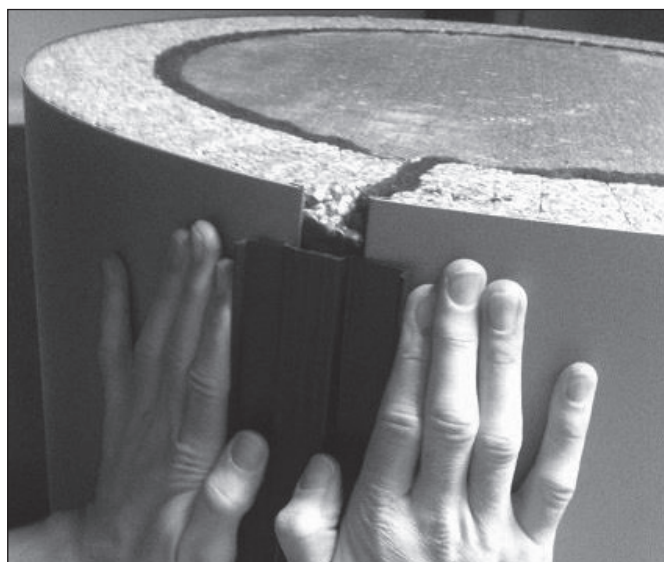


Removal (Deassembly) of Neodul-insulation:

1. remove cover part
2. remove top insulation
3. remove all the accessories (caps, rosettes etc.)
4. by tapping/pressing the shell-jacket in the direction of the hook strip it is now possible to loosen the tension of the closed insulation



5. loosen the profile edge by compression the hook strip with both hands
6. open hook strip completely from the top to the bottom



NEODUL® Thermal insulation for drinking water storage tanks & heaters

Danfoss A/S

Heating Segment • heating.danfoss.com • +45 7488 2222 • E-Mail: heating@danfoss.com

Danfoss can accept no responsibility for possible errors in catalogues, brochures and other printed material. Danfoss reserves the right to alter its products without notice. This also applies to products already on order provided that such alterations can be made without subsequential changes being necessary in specifications already agreed.
All trademarks in this material are property of the respective companies. Danfoss and all Danfoss logotypes are trademarks of Danfoss A/S. All rights reserved.