



3500 Annapolis Lane North, Minneapolis, MN 55447
 Telephone: (763) 509-2084 Telefax: (763) 559-0108

Unit Specification

KE04108 Valve Drive Amplifier

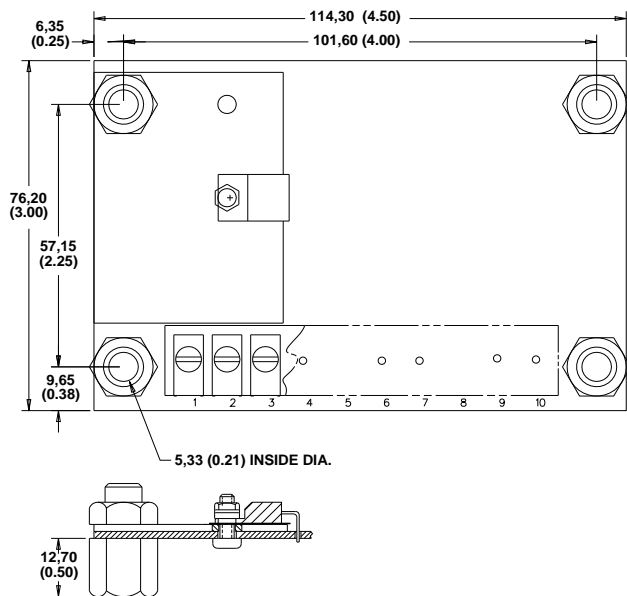
ISSUE: 4

DATE: September 1996

GENERAL DESCRIPTION

The device is a free-standing amplifier mounted on 4 standoffs. Voltage signal from a transducer/controller, through the amplifier, produces a proportional current to drive electrohydraulic actuators. Connections to the amplifier are via screw terminals.

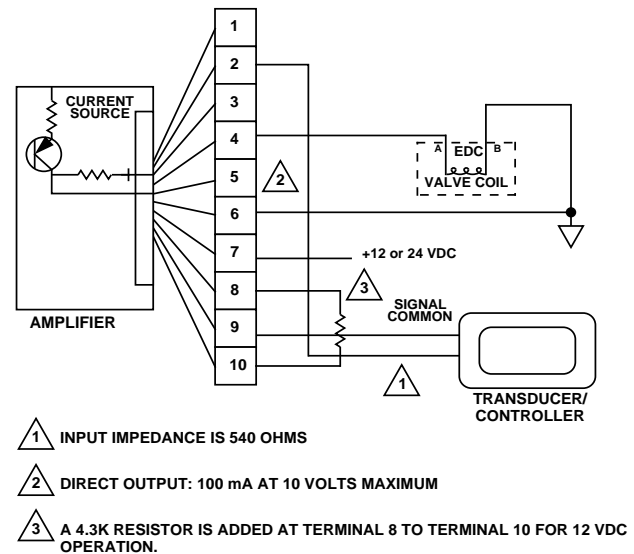
DIMENSIONS



1647

Dimensions of the KE04108 in Millimeters (Inches).

CONNECTION DIAGRAM



- 1 INPUT IMPEDANCE IS 540 OHMS
- 2 DIRECT OUTPUT: 100 mA AT 10 VOLTS MAXIMUM
- 3 A 4.3K RESISTOR IS ADDED AT TERMINAL 8 TO TERMINAL 10 FOR 12 VDC OPERATION.

1653A

OUTPUT CHARACTERISTICS

12 VOLT OPERATION

INPUT VOLTAGE

0 to 10 Vdc (terminal 2)

OUTPUT CURRENT

0–100 mA nominal into a 25 ohm load (terminal 4)

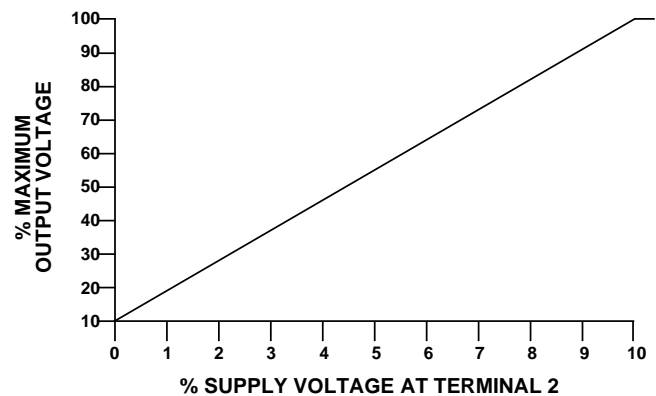
24 VOLT OPERATION

INPUT VOLTAGE

0 to 10 Vdc (terminal 2)

OUTPUT CURRENT

0–110 mA nominal into a 25 ohm load (terminal 4)



1654A