



3500 Annapolis Lane North, Minneapolis, MN 55447
 Telephone: (763) 509-2084 Telefax: (763) 559-0108

Unit Specification

KE07203 Ramped Valve Driver

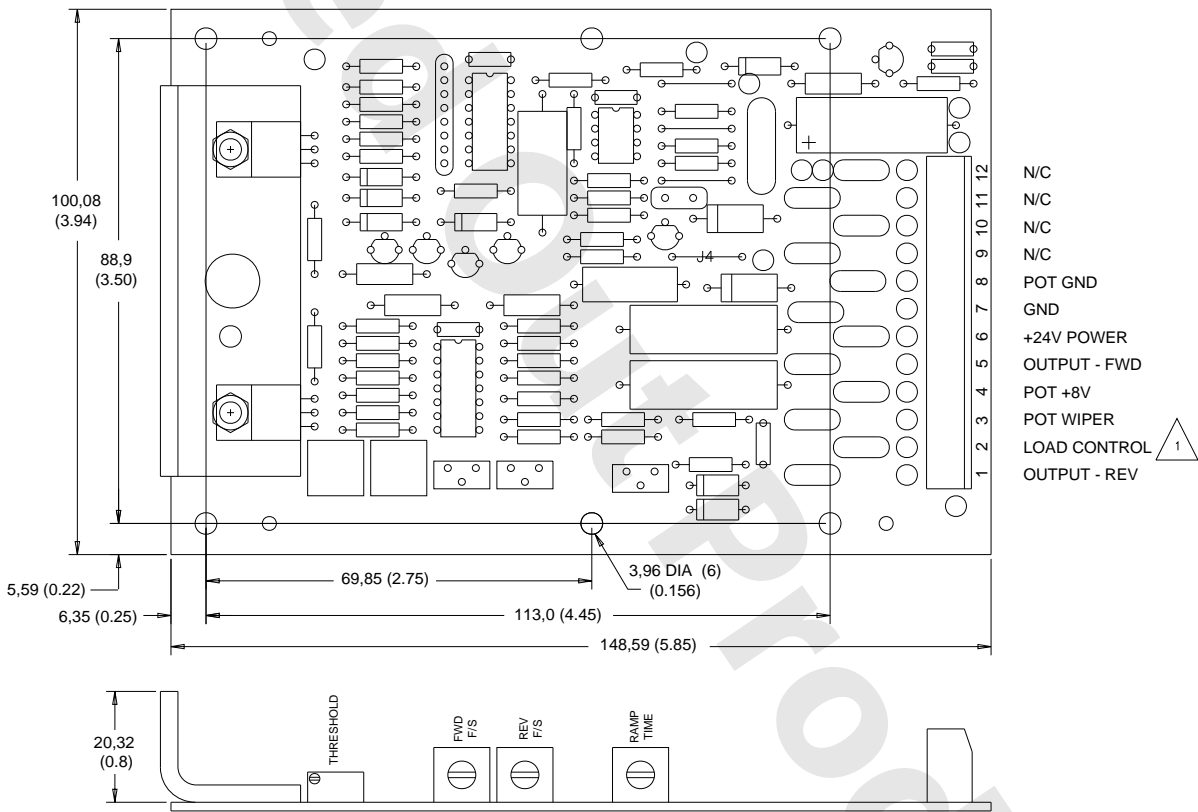
ISSUE: 1

DATE: May 1993

GENERAL DESCRIPTION

This device is a ramped valve driver which accepts a setpoint potentiometer input from a control handle and drives a dual coil proportional valve. It is pulse-width modulated and has adjustable acceleration/deceleration ramping. The threshold, full stroke forward and full stroke reverse outputs are adjustable.

DIMENSION AND CONNECTION DIAGRAM



⚠ WHEN USED WITH LOAD CONTROL, CONNECT LOAD CONTROL OUTPUT TO TERMINAL 2 AND REMOVE JUMPER J4

1686

Dimensions in millimeters (inches).

OUTPUT CHARACTERISTICS

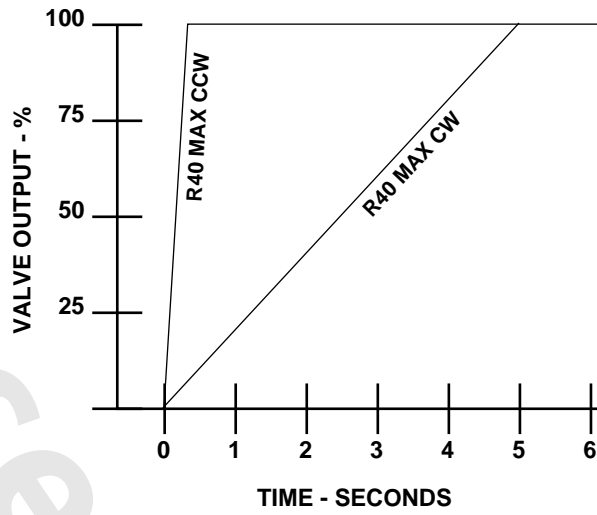
SUPPLY VOLTAGE
24 Vdc

OUTPUT CURRENT
0.7 A

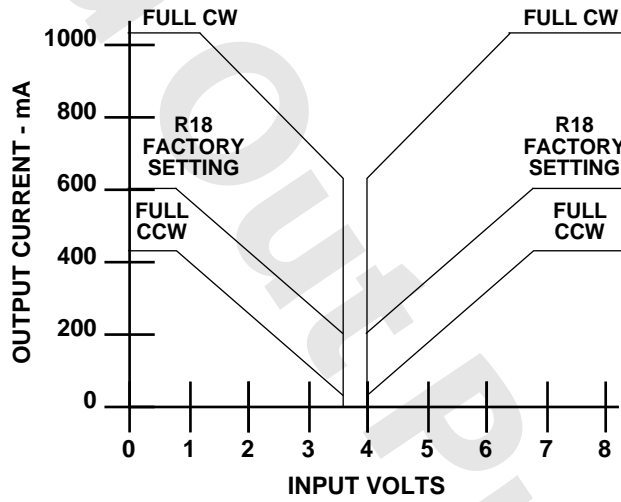
PWM FREQUENCY
100 Hz

FACTORY SETTINGS WITH 26 OHM LOAD
 Threshold: 200 mA
 Full Stroke 600 mA

ADJUSTMENTS

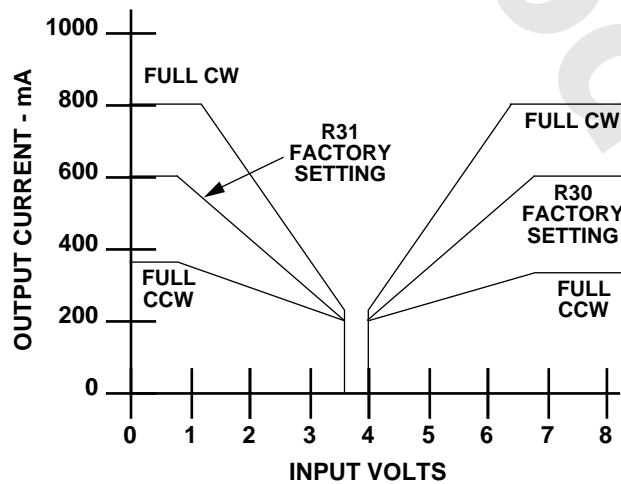


1679



Threshold adjustment.

1680



Full stroke adjustment.

1681