



3500 Annapolis Lane North, Minneapolis, MN 55447
 Telephone: (763) 509-2084 Telefax: (763) 559-0108

Unit Specification

KE07204
Ramped Valve Driver

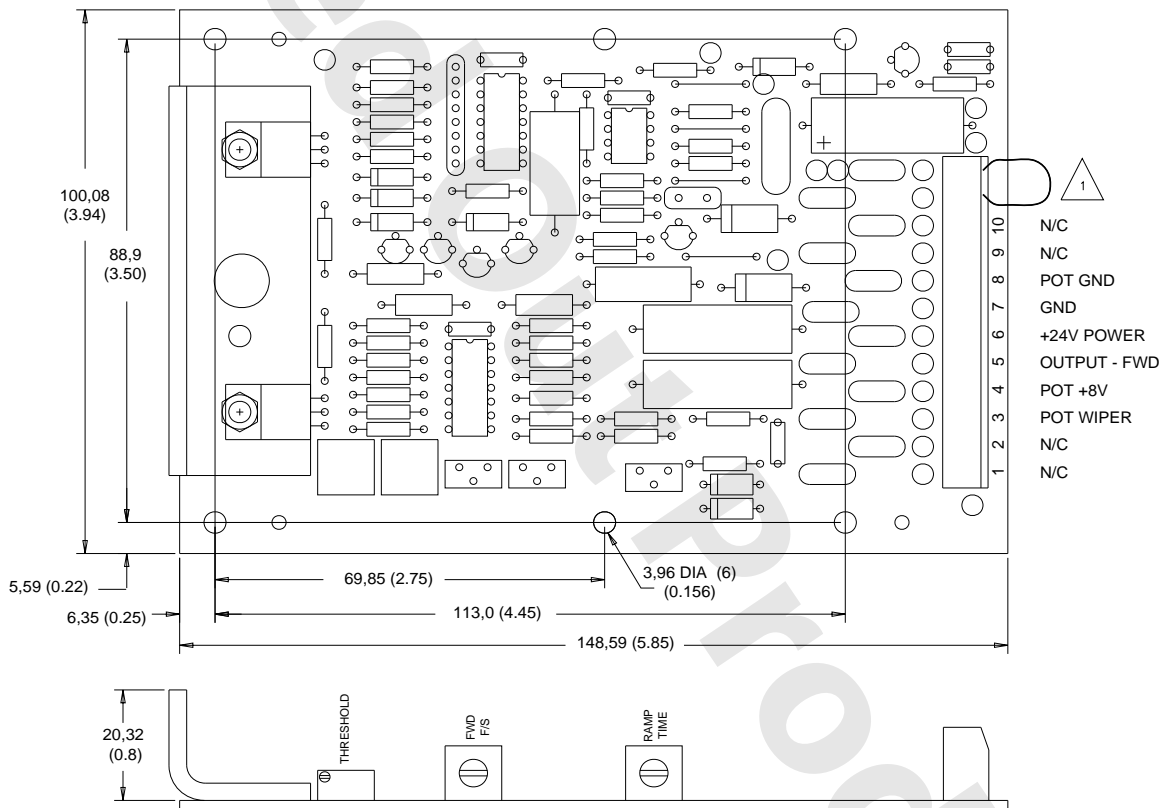
ISSUE: 1

DATE: May 1993

GENERAL DESCRIPTION

This device is a ramped valve driver which accepts a setpoint potentiometer input from a control handle and drives a single coil valve. It is pulse-width modulated and has adjustable acceleration/deceleration ramping. The PWM frequency is selected by a jumper on the terminal strip. The threshold and full stroke forward outputs are adjustable. It does not have a reverse output.

DIMENSION AND CONNECTION DIAGRAM



△ FOR 50HZ PWM JUMPER TERMINALS TB1-11 AND TB1-12
 FOR 30HZ PWM REMOVE JUMPER

1687

Dimensions in millimeters (inches).

OUTPUT CHARACTERISTICS

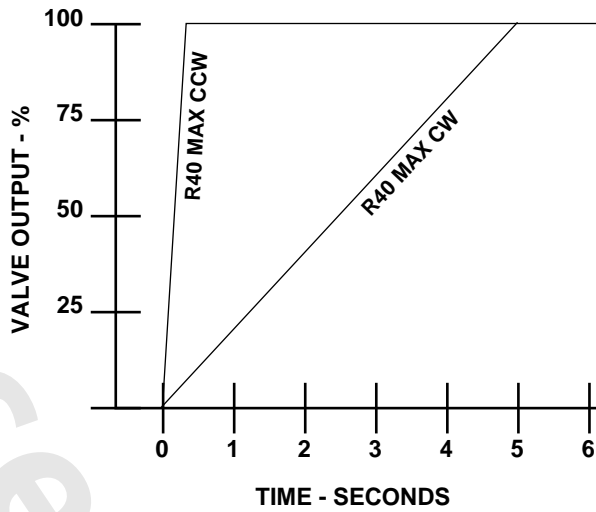
SUPPLY VOLTAGE
 24 Vdc

OUTPUT CURRENT
 800 mA maximum

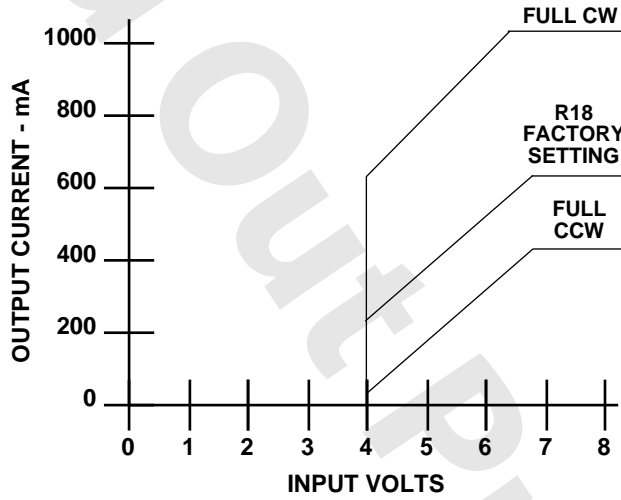
PWM FREQUENCY
 50 Hz or 30 Hz

FACTORY SETTINGS WITH 26 OHM LOAD
 Threshold: 250 mA
 Full Stroke 600 mA

ADJUSTMENTS

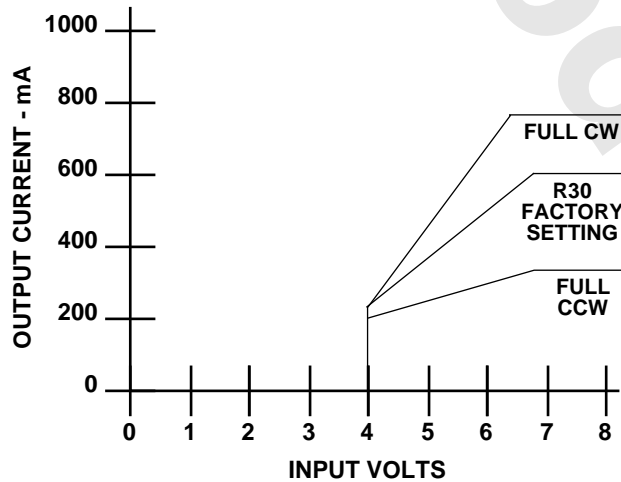


1679



1688

Threshold adjustment.



1689

Full stroke adjustment.