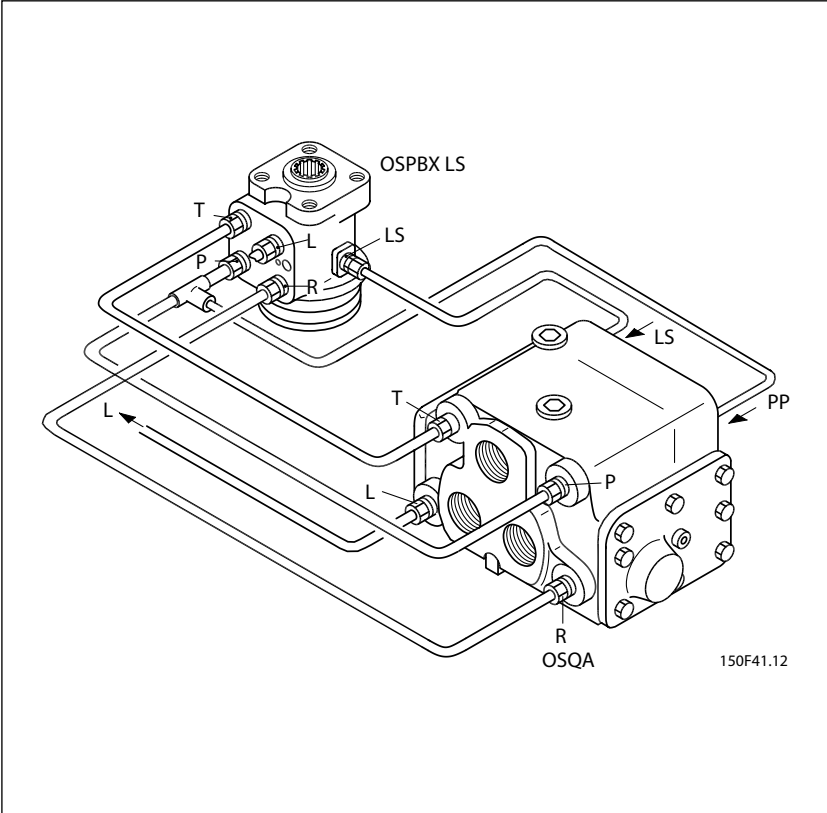


# Installation Guide

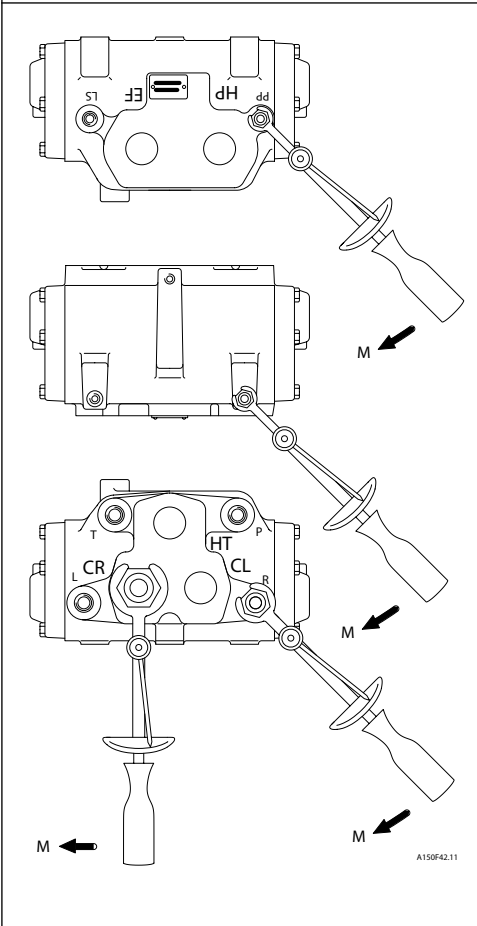
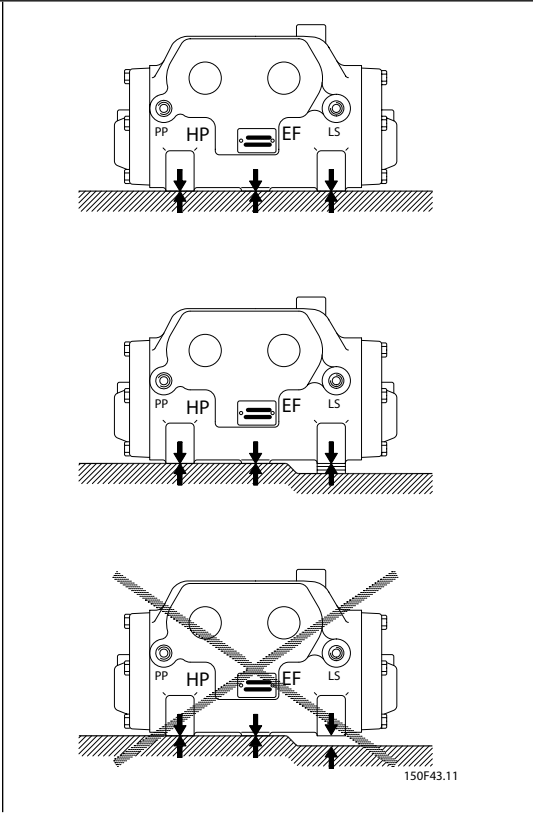
## Flow Amplifier

### OSQA, OSQB

150R9917



150R9917



M	Max. tilspændingsmoment for forskruring Max. tightening torque for screwed connection Max. Anzugsmoment für Verschraubung Couple de serrage maxi pour le raccord					
	Tilslutning Connection Anschluss Raccordement					
	PP, LS		P, T, L, R		HP, HT, CR, CL, EF	
Forskruring Screwed connection Verschraubung Raccord	G 1/4	7/16-20 UNF	G 1/2	3/4-16 UNF	G 3/4	1 1/16-12 UNF
med skærekant with cutting edge mit Dichtkante tranchant	4 daNm 350 lbf in		10 daNm 890 lbf in		16 daNm 1400 lbf in	
med kobberskive with copper washer mit Kupferscheibe avec rondelle en cuivre	2 daNm 180 lbf in		3 daNm 270 lbf in		5 daNm 440 lbf in	
med aluminiumsskive with aluminium washer mit Aluminiumscheibe avec rondelle en aluminium	3 daNm 270 lbf in		8 daNm 700 lbf in		13 daNm 1150 lbf in	
med O-ring with O-ring mit O-ring avec joint torique		2 daNm 180 lbf in		6 daNm 530 lbf in		9 daNm 800 lbf in

Monteringskruer Mounting screws Montageschrauben Vis de montage		
M 10 x 1,5	3/8-16 UNC	7/16-14 UNC
3.0 ± 0.5 daNm 270 ± 45 lbf in	4.0 ± 0.5 daNm 350 ± 45 lbf in	5.5 ± 0.5 daNm 490 ± 45 lbf in