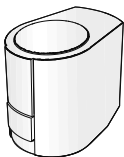
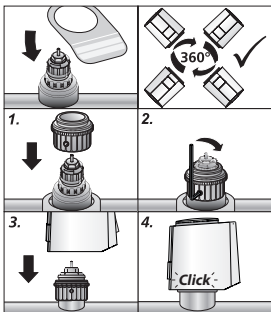


# ABRA - A5, ON/OFF Actuator 24 V AC

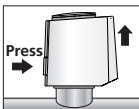
082F1110



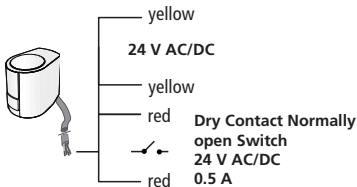
## Assembly



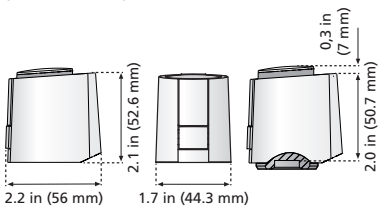
## Disassembly



## Connection



Supply voltage: Safety transformer (for AC variant) according to EN 61558-2-6 or switching power supply (for DC variant) according to EN 61558-2-16 (Europe) or class II transformer (North America)

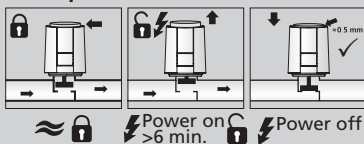


First-Open

Normally Closed

NC

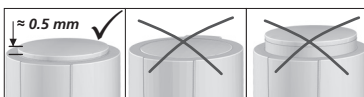
### "First-Open" function



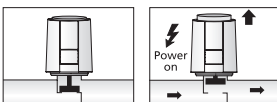
Normally Closed

NC

### Adaption check



### Function mode



### Technical Specifications

Operating voltage:	24 V, AC/DC, +20 %...-10 %
Operating power:	1 W
Max. inrush current:	< 300 mA for max. 2 min.
Switching current, end switch:	24 V AC/DC: 0.5 A
Travel:	4.0 mm
Actuating force:	100 N +5 %
Type of protection:	IP 54
Protection class:	III
Ambient temperature:	32 ... 140 °F (0 ... 60 °C)
Storage temperature:	-13 ... 140 °F (-25 ... 60 °C)