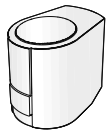


# ABNM - A5, Proportional

Actuator 24 V AC, 0-10 V DC



**082FIII**

**Proportional**

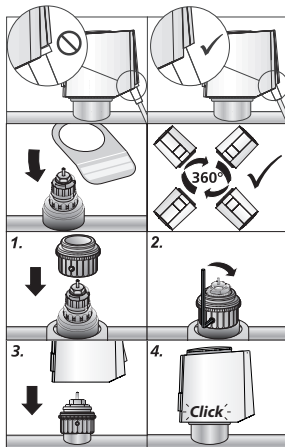
**APR 4xx05**

## Assembly



2 mm

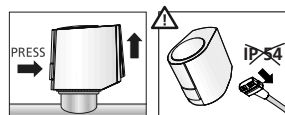
Montage  
Montaje



## Disassembly



Démontage  
Desmontaje



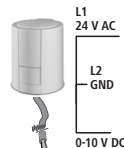
## Connection



Raccordement  
Connexion

Supply voltage: Safety transformer according to EN 61558-2-6  
Tension d'alimentation: Transformateur de sécurité conforme à la norme EN 61558-2-6

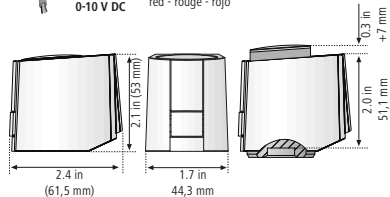
Tensión de alimentación: Transformador de seguridad conforme a la norma EN 61558-2-6



black - noir - negro -

blue - bleu - azul

red - rouge - rojo



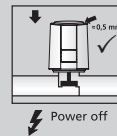
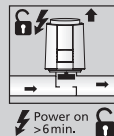
First-Open

Normally Closed

**NC**

"First-Open" function  
Fonction „First-Open“

Función de contacto abierto

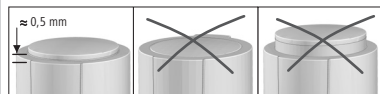


Normally Closed

**NC**

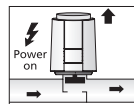
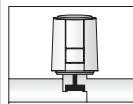
Adaption check  
Contrôle de l'ajustement

Aanpassingscontrole



Function mode  
Mode de fonctionnement

Funcionamiento



ENG

**Technical Specifications**

Operating voltage:	24 V AC, -10 % ... +20 %, 50-60 Hz
Operating capacity:	1 W
Control voltage:	0-10 V DC
Making current:	< 320 mA for max. 2 min
Travel:	4 mm
Actuating force:	100 N +5 %
Type of protection:	IP 54
Ambient temperature:	0 °C ... 60 °C
Storage temperature:	-25 °C ... 60 °C

FRA

**Spécifications techniques**

Tension de service:	24 V AC, -10 % ... +20 %, 50-60 Hz
Capacité de fonctionnement :	1 W
Tension de contrôle:	0-10 V DC
Courant d'appel :	< 320 mA pendant max. 2 min
Course:	4 mm
Force :	100 N +5 %
Classe de protection :	IP 54
Température ambiante :	0 °C ... 60 °C
Température de stockage :	-25 °C ... 60 °C

ESP

**Datos técnicos**

Tensión de servicio:	24 V AC, -10 % ... +20 %, 50-60 Hz
Potencia de servicio:	1 W
Tensión de control:	0-10 V
Corriente de cierre:	< 320 mA para un máximo de 2 min
Corse:	4 mm
Fuerza:	100 N +5 %
Grado de protección:	IP 54
Temperatura ambiente:	0 °C ... 60 °C
Temp. de almacenamiento:	-25 °C ... 60 °C

**Characteristic curves (example 4 mm travel)**