

# Danfoss Hansen®

## Flat Face Quick Disconnect Couplings

Exceptional **working pressure.**  
**High-level** flow rate.

**Exceeds ISO 16028 standards:**

- 60% higher working pressures up to 400 bar
- Up to 74% higher flow rates, reducing energy loss.
- Allows for an increase in design versatility, one series can be used in a variety of different applications



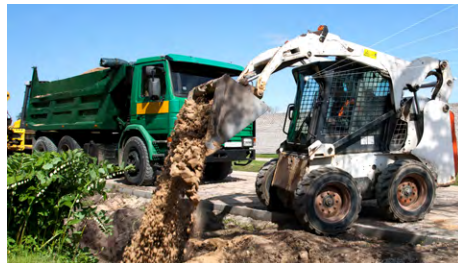
Markets/Applications

- Hydraulic and fluid transfer
- Construction equipment
- Agricultural equipment
- Utility vehicles
- On-Highway vehicles
- Stationary in-plant hydraulics



Sells Against

- Faster FFH Series
- Stucchi A Premier Series
- Parker FEM Series
- Dixon HT Series
- Hombury HQ Series
- Foster FF Plus Series



Features

- **Lowest pressure drop** reduces energy consumption of overall hydraulic circuit
- **Exceptional corrosion resistance** of up to **1000 hours** due to an eco-friendly and nickel-free coating
- Can connect under (residual) pressure up to **5,076 psi with CUP** plug option

Order Fulfillment

- Standard Flat Face configurations and dust caps stocked in Van Wert and Cleveland distribution centers

### Physical Characteristics

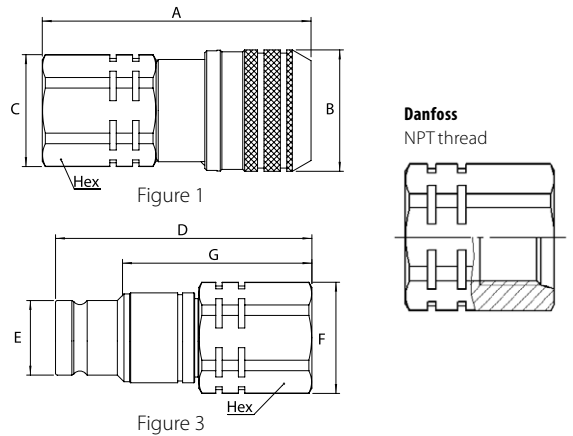
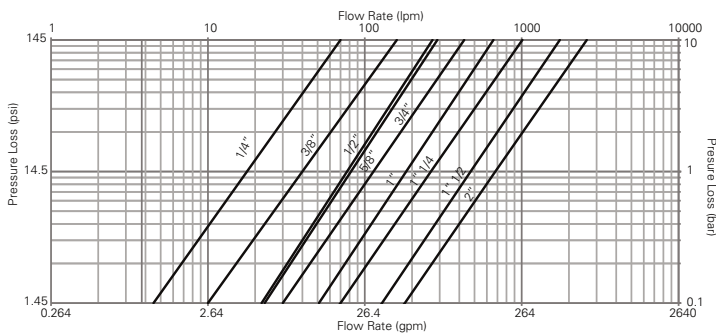
ISO Size*	Coupling Size	Maximum Operating Pressure						Minimum Burst Pressure						Rated Flow**		Fluid Loss	Air Inclusion	Force to Connect			
		Connected***		Plug/ Male Half		Socket/ Female Half		Connected		Plug/ Male Half		Socket/ Female Half		lpm	gpm	ml-cc.	ml-cc.	N	Lbs		
(mm)	(in)	(bar)	(psi)	(bar)	(psi)	(bar)	(psi)	(bar)	(psi)	(bar)	(psi)	(bar)	(psi)	(bar)	(psi)	(lpm)	(gpm)				
6.3	1/4	400	5,800	400	5,800	400	5,800	1,400	20,300	1,400	20,300	1,400	20,300	18	4.8	0.004	0.007	80	18.0		
10.0	3/8	400	5,800	400	5,800	400	5,800	1,400	20,300	1,400	20,300	1,400	20,300	40	10.6	0.006	0.010	140	31.5		
12.5	1/2	400	5,800	400	5,800	400	5,800	1,400	20,300	1,400	20,300	1,400	20,300	77	20.3	0.012	0.013	195	43.8		
16.0	5/8	400	5,800	400	5,800	400	5,800	1,400	20,300	1,400	20,300	1,400	20,300	82	21.7	0.016	0.030	205	46.1		
19.0	3/4	400	5,800	400	5,800	400	5,800	1,300	18,850	1,300	18,850	1,400	20,300	114	30.1	0.034	0.015	215	48.3		
25.0	1	400	5,800	400	5,800	400	5,800	1,260	18,270	1,260	18,270	1,260	18,270	184	48.6	0.032	0.033	260	58.5		
-	1 1/4	300	4,350	300	4,350	300	4,350	900	13,050	900	13,050	900	13,050	260	68.7	0.170	0.053	200	45.0		
-	1 1/2	300	4,350	300	4,350	270	3,915	900	13,050	900	13,050	810	11,745	450	118.9	0.265	0.445	385	86.6		
-	2"	300	4,350	300	4,350	225	3,260	900	13,050	900	13,050	675	9,790	700	184.9	0.390	0.260	375	84.3		

\* The ISO size corresponds to the internal diameter of the hose or the external diameter of the rigid tube (as defined in ISO 4397 Standard)

\*\* Indicated values refer to a 1 bar/14.5 psi pressure drop

\*\*\* 400 bar for static, steady or non-pulsed applications, 350 bar for ISO pressure rating for dynamic applications with moderate hydraulic shock

### Flow Data



### Dimensions (Socket/Female)

Part Number	Body Size	ISO Size	Nominal Flow Diameter	Thread size	Fig.	Dimensions					Weight	
NBR+AU	(in)	mm	mm	NPT		A (in)	B (in)	C (in)	Hex (in)	lbs	grams	
6FFS25	1/4"	6.3	6	1/4 18f	1	2.13	1.06	0.94	0.87	-	-	
10FFS37	3/8"	10	8.6	3/8 18f	1	2.67	1.26	1.16	1.06	-	-	
10FFS50	3/8"	10	8.6	1/2 14f	1	2.79	1.26	1.16	1.06	-	-	
12FFS50	1/2"	12.5	11	1/2 14f	1	3.27	1.50	1.56	1.42	-	-	
12FFS75	1/2"	12.5	11	3/4 14f	1	3.39	1.50	1.56	1.42	-	-	
16FFS50	5/8"	16	13	1/2 14f	1	3.27	1.66	1.56	1.42	-	-	
16FFS75	5/8"	16	13	3/4 14f	1	3.39	1.66	1.56	1.42	-	-	
19FFS100	3/4"	19	15	1 11,5f	1	3.80	1.82	1.81	1.65	-	-	
19FFS75	3/4"	19	15	3/4 14f	1	3.80	1.82	1.81	1.65	-	-	
25FFS100	1"	25	18	1 11,5f	1	4.07	2.17	2.36	2.17	-	-	
25FFS125	1"	25	18	1 1/4 11,5f	1	4.07	2.17	2.36	2.17	-	-	
32FFS125	1 1/4"	-	22.1	1 1/4 11,5	1	4.93	2.55	2.36	2.17	4.22	1915	
40FFS150	1 1/2"	-	30.1	1 1/2 11,5	1	5.01	3.13	2.76	2.56	6.16	2796	
50FFS200	2"	-	39.2	2 11,5	1	6.17	3.84	3.46	3.15	10.87	4931	

### Dimensions (Plugs/Male)

Part Number	Body Size	ISO Size	Nominal Flow Diameter	Thread size	Fig.	Dimensions					Weight	
NBR+AU	(in)	mm	mm	NPT		D (in)	E (in)	F (in)	G (in)	lbs	grams	
6FFP25	1/4"	6.3	6	1/4 18f	3	2.01	0.64	0.94	1.58	-	-	
10FFP37	3/8"	10	8.6	3/8 18f	3	2.56	0.78	1.16	1.96	-	-	
10FFP50	3/8"	10	8.6	1/2 14f	3	2.68	0.78	1.16	2.08	-	-	
12FFP50	1/2"	12.5	11	1/2 14f	3	2.71	0.96	1.56	2.05	-	-	
12FFP75	1/2"	12.5	11	3/4 14f	3	2.83	0.96	1.56	2.16	-	-	
16FFP50	5/8"	16	13	1/2 14f	3	2.71	1.06	1.56	2.05	-	-	
16FFP75	5/8"	16	13	3/4 14f	3	2.83	1.06	1.56	2.16	-	-	
19FFP100	3/4"	19	15	1 11,5f	3	3.69	1.18	1.81	2.84	-	-	
19FFP75	3/4"	19	15	3/4 14f	3	3.69	1.18	1.81	2.84	-	-	
25FFP100	1"	25	18	1 11,5f	3	4.12	1.42	2.36	3.22	-	-	
25FFP125	1"	25	18	1 1/4 11,5f	3	4.12	1.42	2.36	3.22	-	-	
32FFP125	1 1/4"	-	22.1	1 1/4 11,5	3	4.15	1.73	2.36	3.24	2.63	1193	
40FFP150	1 1/2"	-	30.1	1 1/2 11,5	3	4.13	2.24	2.61	3.01	3.15	1430	
50FFP200	2"	-	39.2	2 11,5	3	5.31	2.87	3.29	3.80	6.01	2725	

### Danfoss Power Solutions

2800 East 13th Street • Ames, IA 50010, USA • Phone: +1 515 239 6000  
www.danfoss.com

Danfoss can accept no responsibility for possible errors in catalogs, brochures and other printed material. Danfoss reserves the right to alter its products without notice. This also applies to products already on order provided that such alterations can be made without subsequent changes being necessary in specifications already agreed. All trademarks in this material are property of the respective companies. Danfoss and the Danfoss logotype are trademarks of Danfoss A/S. All rights reserved.