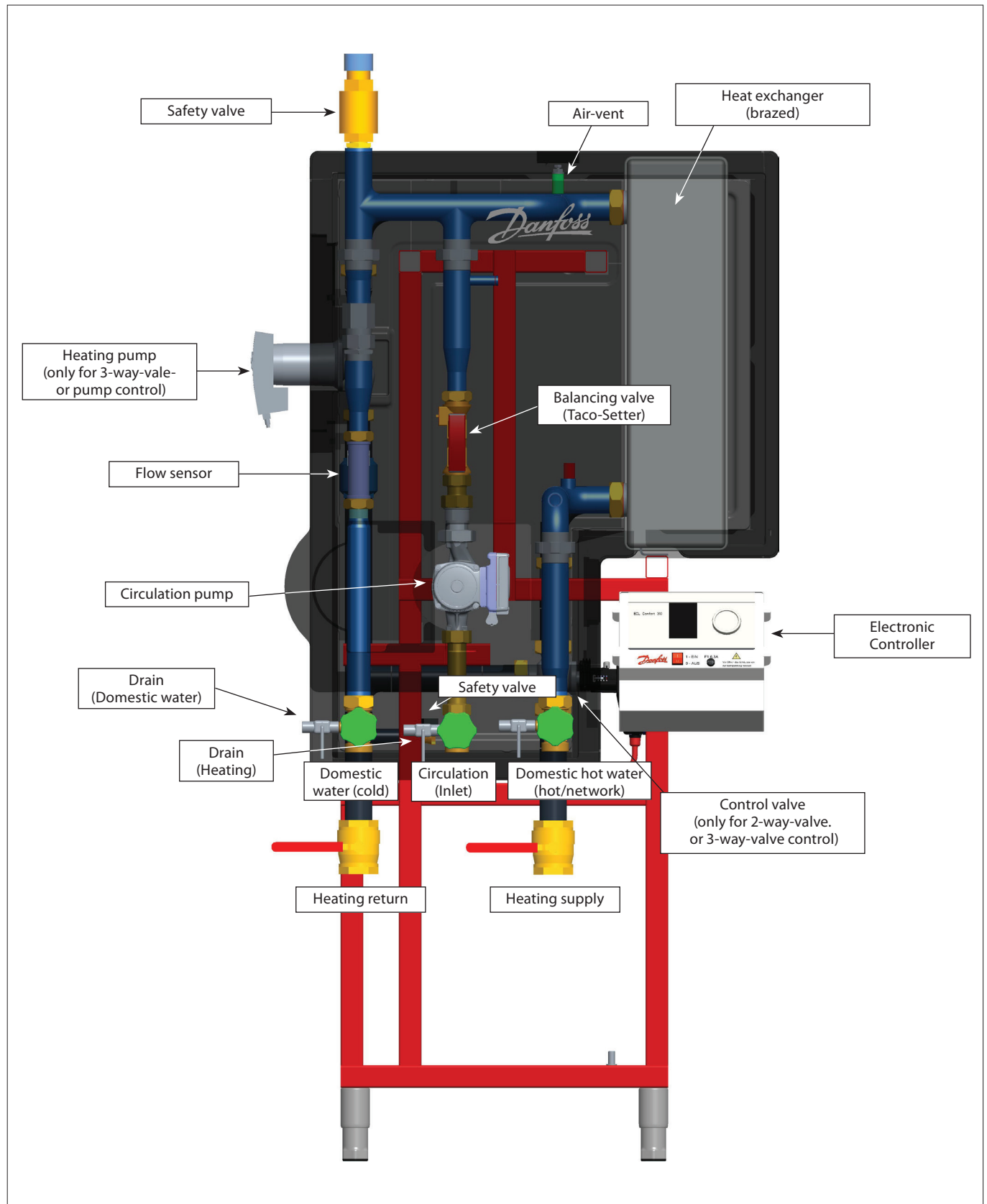


Quick Guide ThermoDual®-FLS

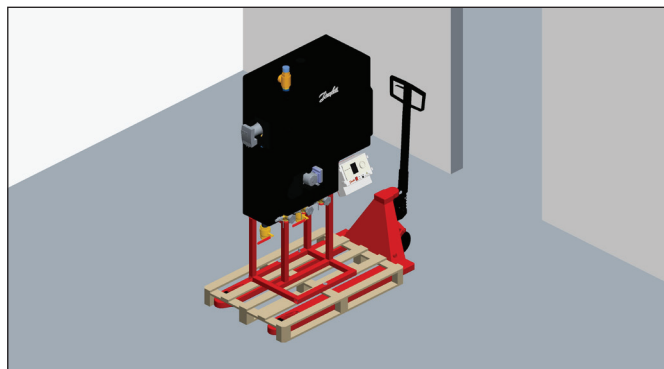
Transport / unpacking the system:



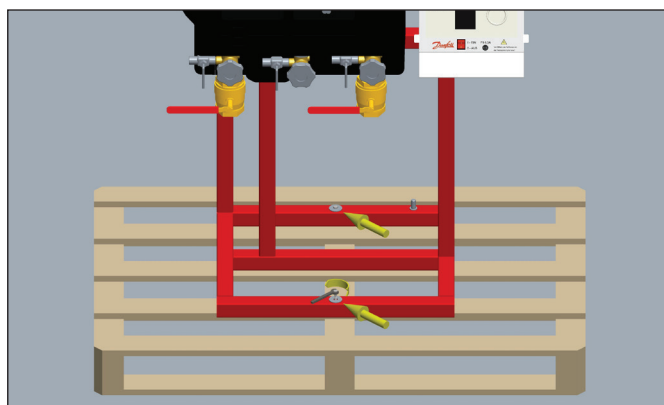
Transport / unpacking the system:

The system is delivered on a standard EUR-pallet. This makes it easy to transport the product via a forklift truck or pallet truck.

Remove the packaging (wooden crate/foil) and dispose of it.

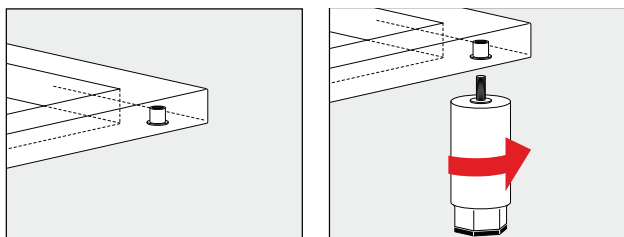


Then detach the system from the pallet; this is fixed using 2 wooden screws.



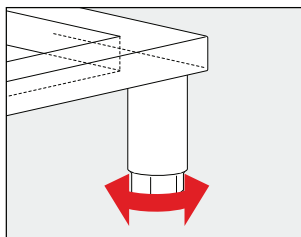
Setting up the system:

Screw the height-adjustable, enclosed feet into the threads beneath the frame:

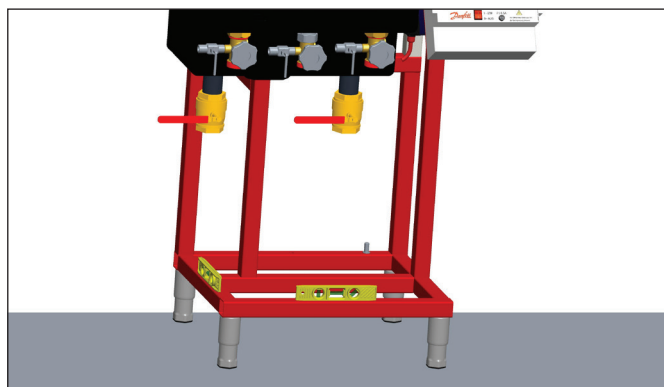
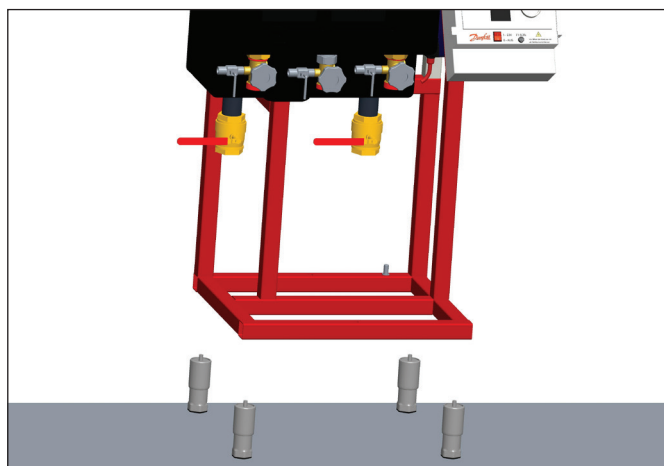


Align the system horizontally by adjusting the height of the feet, e.g. using a spirit level.

You can compensate for any unevenness of the installation area by up to 50 mm:

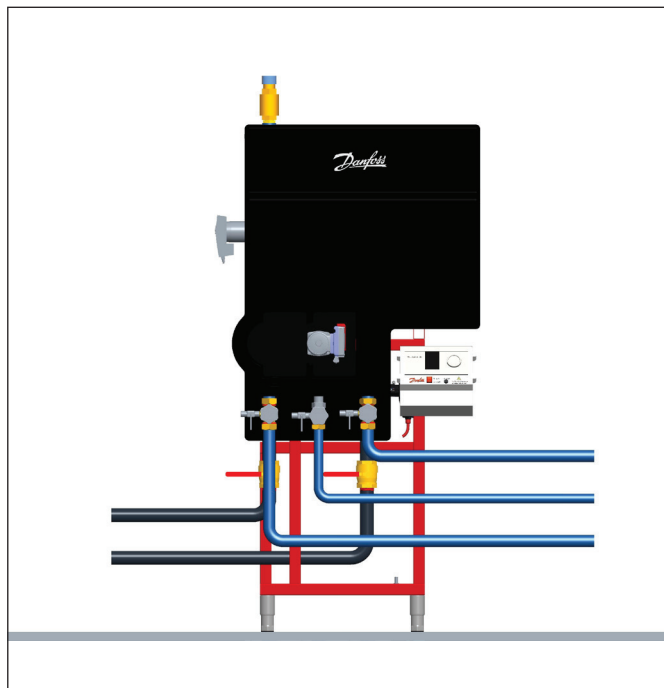


For more uneven surfaces, it is first necessary to create a level surface on site, e.g. a boiler platform or similar.



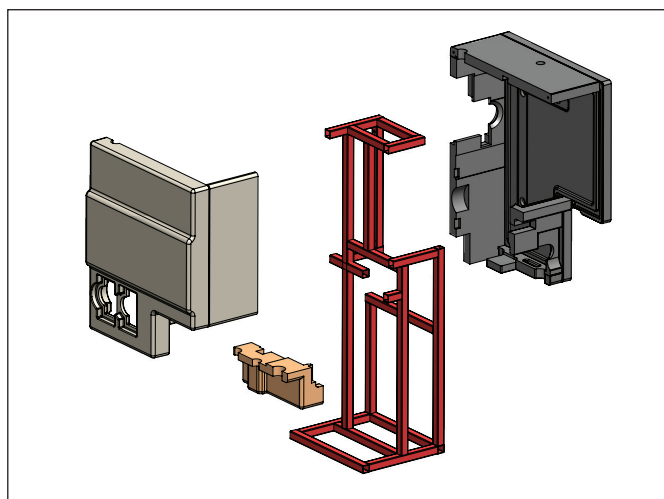
Connecting to the pipe network:

Once the system is correctly aligned at the installation site, it can be connected to the pipe network.



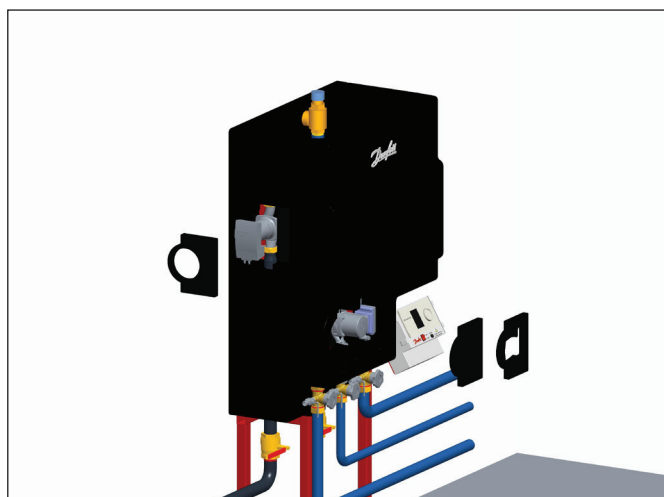
Disassembly of the thermal insulation (cover):

The thermal insulation consists of 3 hard foam parts.
The back part with the left and top cover is firmly connected to the stand frame:



In addition, pumps and valves are provided with flexible covers.

First remove the flexible pump covers by carefully pulling them out of the recesses of the insulating cover.
These are flexible and can be easily dismantled by pressing them together.

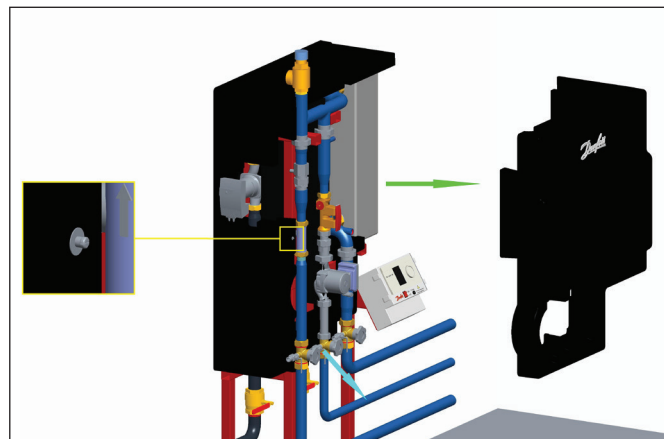


Quick Guide **ThermoDual®-FLS**

The front cover can be pulled out to the front. This is connected with the rear via multiple connectors (tongue and groove). Pull the cover as far forward horizontally as possible to avoid damaging the connections.

The lower end part can then be easily pulled down obliquely since it is held only by a groove between the front and back parts. The left wall can also be pulled forward horizontally.

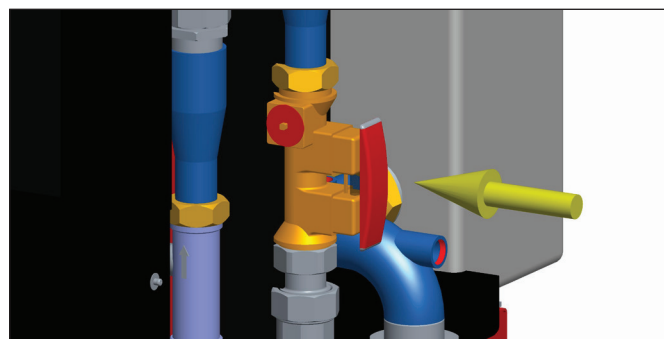
It is now possible to carry out inspection and maintenance work on the system, such as replacing defective components, checking for leaks or re-tightening screw connections.



You can also check and/or regulate the flow of circulation on the balancing valve (Taco setter) as shown in the picture on the right:

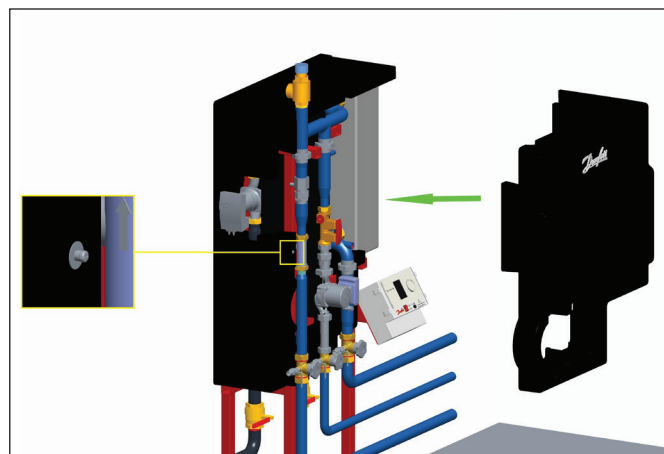
The system can be drained after shutting off the 5 main shut-off valves without removing the cover.

Further details can be found in the complete installation, commissioning and operating instructions.



Reassembly of the thermal insulation:

The front insulation is installed in reverse order. Pay particular attention to the correct positioning of the connectors. Only when all tongue and groove connections are correctly positioned should the front and back be pressed together firmly.



Danfoss A/S

Heating Segment • heating.danfoss.com • +45 7488 2222 • E-Mail: heating@danfoss.com

Danfoss can accept no responsibility for possible errors in catalogues, brochures and other printed material. Danfoss reserves the right to alter its products without notice. This also applies to products already on order provided that such alterations can be made without consequential changes being necessary in specifications already agreed. All trademarks in this material are property of the respective companies. Danfoss and all Danfoss logotypes are trademarks of Danfoss A/S. All rights reserved.