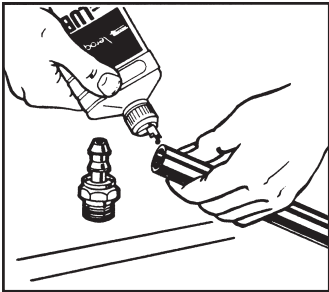


Fitting assembly with Boston EHW194 and EHW094 hose

Hose assembly instructions

Socketless, FD83 and UQD connectors

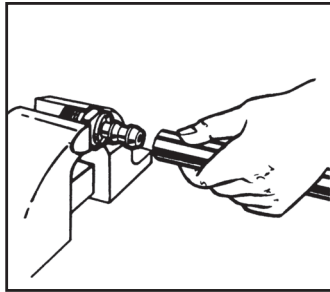
SOCKETLESS® fittings with Boston® EHW094 and EHW194 hose



To Assemble

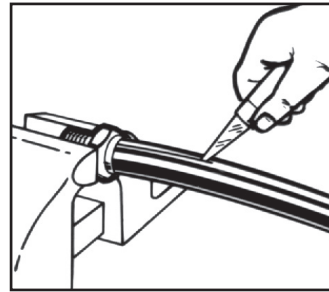
Step 1

Cut hose to required length with a sharp knife. Oil inside of hose and outside of SOCKETLESS nipple liberally.



Step 2

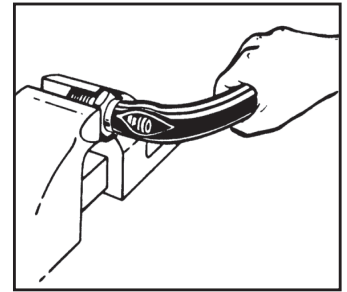
Push hose on fitting until hose end bottoms underneath protective cap as shown. For quantity production use a SOCKETLESS fitting assembly machine.



To Disassemble

Step 1

Slit hose lengthwise from protective cap to end of nipple.

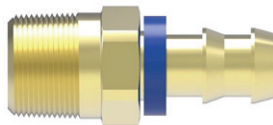


Step 2

Bend hose, then snap hose off with a quick tug.

SOCKETLESS fittings

Low pressure service



Clamp location on hose fitting



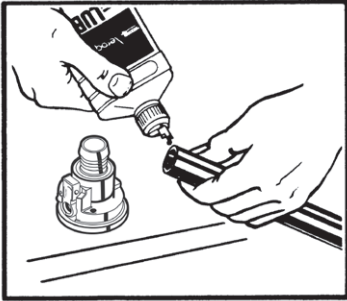
CLAMP INFORMATION for SOCKETLESS, FD83 and UQD connectors



Dash size	Part number	Reference	Ear width mm (Inch)	Band width mm (Inch)	Size range mm (Inch)
-04	FF91764-162	016.0-706R	8.0 (0.315)	7.0 (0.276)	13.5 - 16.0 (0.53 - 0.63)
-06	FF91764-198	019.8-706R	10.0 (0.394)	7.0 (0.276)	16.6 - 19.8 (0.65 - 0.78)
-08	FF91764-241	024.1-706R	10.0 (0.394)	7.0 (0.276)	20.9 - 24.1 (0.82 - 0.95)
-10	FF91764-271	027.1-706R	10.0 (0.394)	7.0 (0.276)	23.9 - 27.1 (0.94 - 1.07)
-12	FF91764-316	031.6-706R	10.0 (0.394)	7.0 (0.276)	28.4 - 31.6 (1.12 - 1.24)
-16	FF91764-396	039.6-706R	10.0 (0.394)	7.0 (0.276)	36.4 - 39.6 (1.43 - 1.56)

The use of clamp is dependent on the performance parameters of hose. Please refer to hose pressure ratings for when clamp is required.

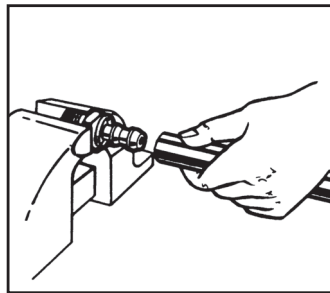
FD83 and UQD Series hose assembly instructions for quick disconnect coupling with **Boston EHW094 & EHW194** hose



To Assemble

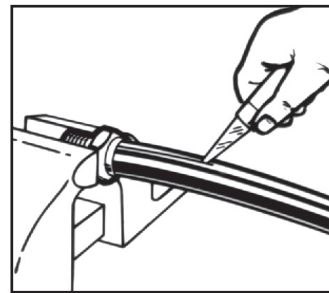
Step 1

Cut hose to required length with a sharp knife. Oil inside of hose and outside nipple liberally.



Step 2

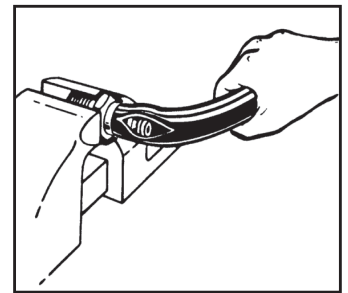
Push hose on coupling until hose barb touches the flat surface of the coupling body.



To Disassemble

Step 1

Slit hose lengthwise from edge of coupling body to end of the barb.

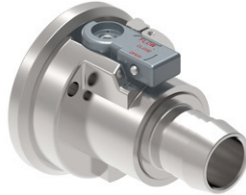


Step 2

Bend hose, then snap hose off with a quick tug.

FD83 series

Full-flow dual-interlock coupling



Universal Quick Disconnect (UQD)

For thermal management applications

