

Fact Sheet

Pro-FX Configure v2

Where configurability **meets simplicity**



Pro-FX Configure v2 is valve configuration software the way it should be: smarter, faster, easier. Featuring a wizard-based setup as well as parameter-based tuning, the user-friendly software enables quick and easy configuration of advanced AxisPro® valves. A streamlined, step-by-step workflow takes the user through valve setup for specified control modes including spool position, cylinder position, pressure, speed, or force. The parameter tables utilized in previous versions remain available in the Advanced mode.

The guided process and simplified on-screen graphics significantly improve ease-of-use. For example, configuring a cylinder position controller — a process that might have taken hours previously — can be completed in a matter of minutes. The program simplifies everything from setup to tuning and commissioning, helping you get your machine to the customer faster.

Benefits

- Intuitive, user-friendly interface enables quick, simple configuration
- No need to tune PID controller for most applications, saving time

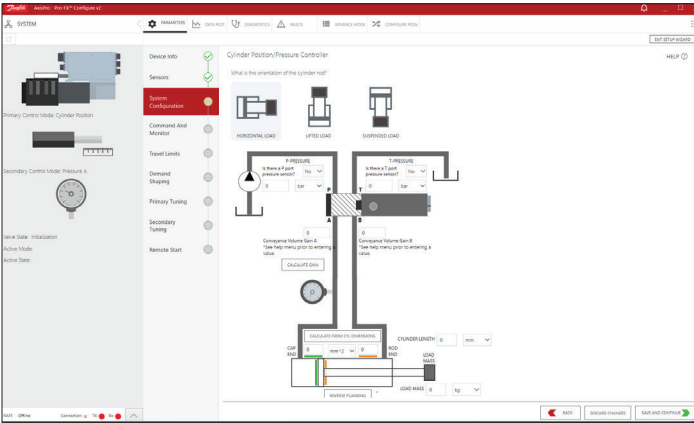
Features

- 100% wizard-based setup
- Parameter-based tuning
- Expanded, improved alert library for diagnostics
- Identifies firmware version and prompts update
- Enhanced data plotting to help tune the application
- Support for legacy versions of AxisPro firmware (7.x and 107.x)
- Updated User Guide available on software download webpage
- Updated release notes and known issue list included with software

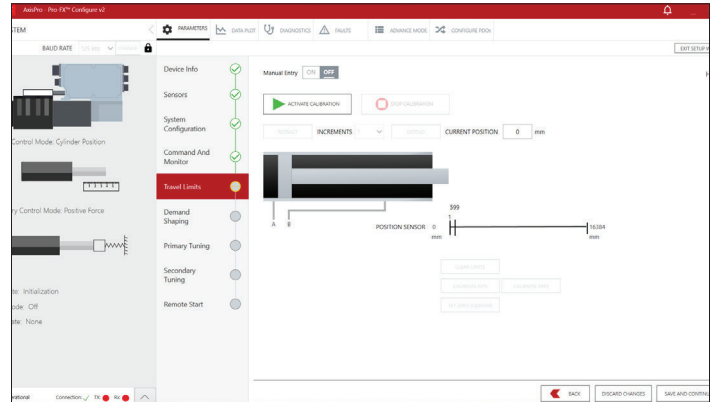
Configuration options

Primary control mode	Spool position, cylinder pressure, cylinder position, cylinder speed, cylinder force
Secondary control mode	None, positive force, negative force, positive and negative force, pressure A, pressure B, speed
Command signal type	0-10 V, +/-10 V, 4-20 mA, +/-10 mA, +/-15 mA, +/-20 mA, CANopen, and industrial networks
Spool and application feedback signal types	4-20 mA, SSI, CANopen, and industrial networks

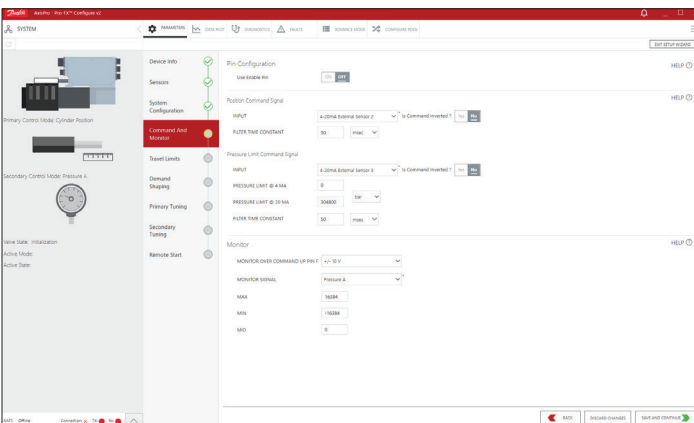
Pro-FX Configure valve setup screenshots



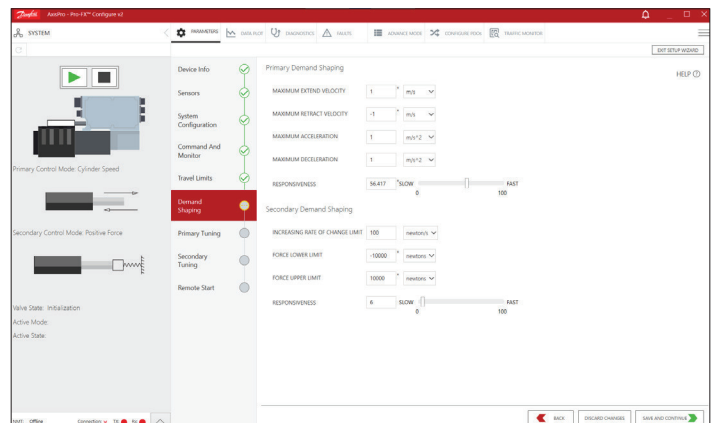
On the system configuration screen, select the cylinder load orientation and enter the pump pressure, conveyance volumes, cylinder size or areas, and load mass.



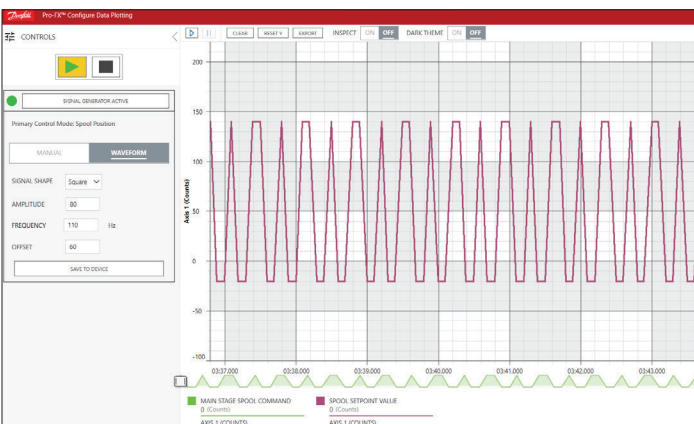
The travel limits screen allows users to specify the travel limit of the cylinder.



On the command and monitor screen, users can activate the enable pin and specify the command signal and monitor output.



On the demand shaping screen, specify the velocity and acceleration/deceleration of the cylinder.



Enhanced, user friendly, data plotting with internal signal generation options for advanced system tuning.



Danfoss Power Solutions, Nordborgvej 81, 6430 Nordborg, Denmark, Tel. +45 74 88 22 22, Fax +45 74 65 25 80
www.danfoss.com, E-mail: info@danfoss.com

Requirements

Operating system

- Windows 10
- Windows 11

Hardware

- Connect to the valve with a USB to CAN adapter and CAN bus cable, or Network cable for Ethernet enable

Downloads

- Visit danfoss.com to download software and user guide