

Installation guide

# Solenoid valve

## Types EVR 2 - EVR 22 (NC/NO)

032R9545

032R9545

**Refrigerants:**

R22/R407C, R404A/R507, R410A, R134a, R407A, R23, R32, R290, R600, R600a.

For other refrigerants, contact Danfoss.

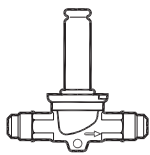
**Note:** Only EVR 2 - EVR 20 with solder connections and without manual stem are suitable for R32, R290, R600 and R600a.

For refrigerants type R32, R290, R600, R600a always use coils with protection degree IP65 or IP67.

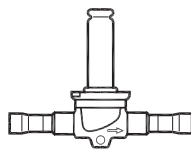


An external current fuse ( rated current of fuse should be around two times of coil rated current, fuse type: medium time lag) shall always be installed ahead of coils to prevent sparks, arcs, over heat, or short circuit (except ATEX coils).

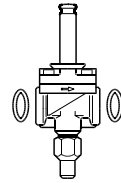
EVR (NC flare)



EVR (NC solder)

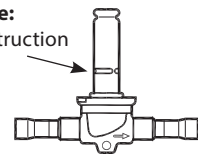


EVR (NC flange)

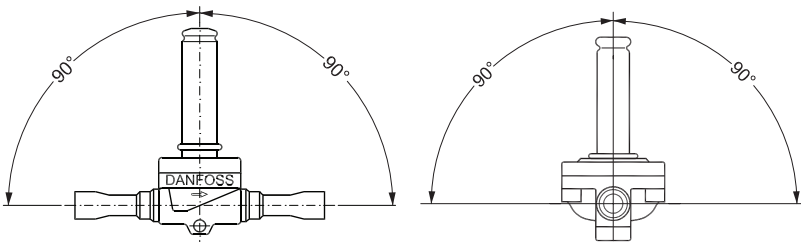


EVR (NO solder)

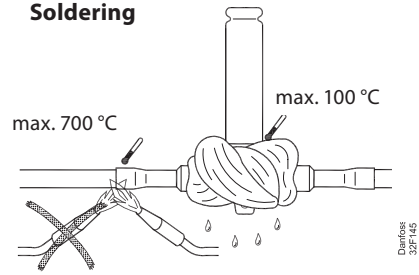
**Note:**  
tube construction



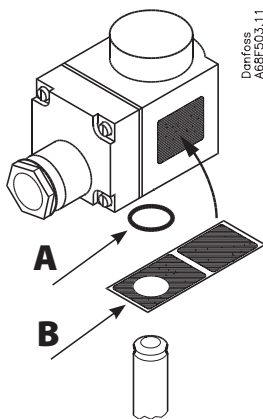
**Mounting directions**



**Soldering**



**Coil and O-ring**



Danfoss  
A68F503.11

**A:** Be sure that the O-ring is in place

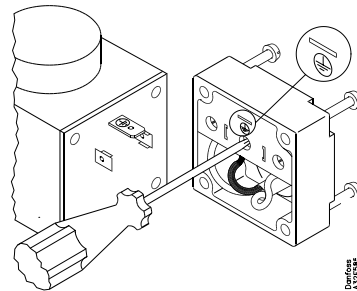
**B:** Sticker applies only to UL products



**Warning**

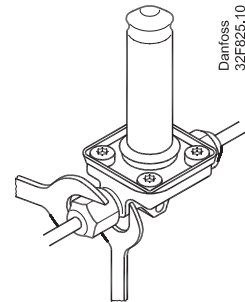
Never switch on power to the coil when the coil is dismounted from the valve. Otherwise the coil may be damaged and there is risk of injuries and burns.

**Electrical connections**



Danfoss  
A2739E

**Flare mounting**



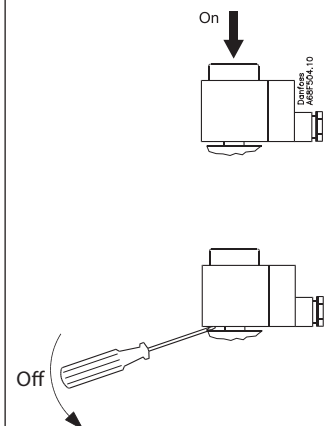
Danfoss  
32F825.10

Max. coil temperature	
9 W AC (EVR 2)	t <sub>max</sub> = 40 °C
10/12 W AC	t <sub>max</sub> = 80 °C
20 W DC	t <sub>max</sub> = 50 °C
10 W AC	t <sub>max</sub> = 55 °C

Media temperature	
Min. medium temperature	t <sub>min</sub> = -40 °C
Max. medium temperature	t <sub>max</sub> = 105 °C

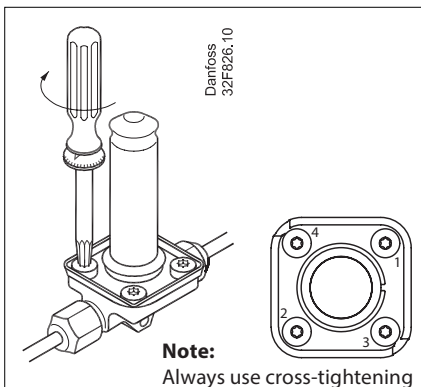
	EVR 2 – EVR 8 [bar]	EVR 10 [bar]	EVR 15 – EVR 22 [bar]
Max. working pressure PS/MWP	45.2	35	32
Max. operating diff. pressure (MOPD)	Coil dependent		

**Mounting / dismounting coil**

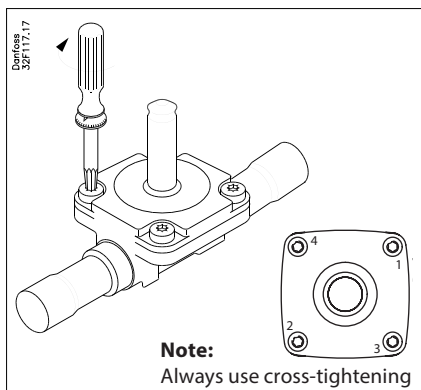


Service only

**Mounting / dismounting of top part**

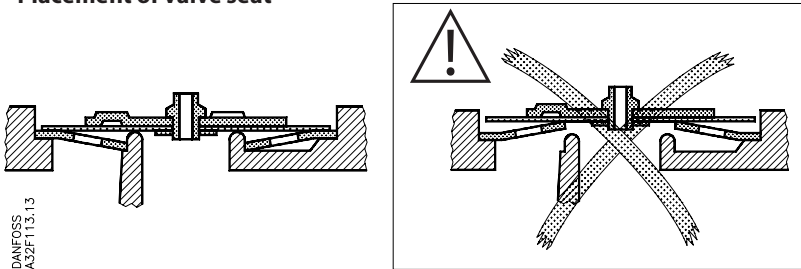


Type	[Nm]	[kpm]	[ft-lbs]	Torx size
EVR 2, EVR 3	1.4	0.15	1	T15
EVR 4, EVR 6, EVR 8	2.0	0.2	1.44	T15/T20

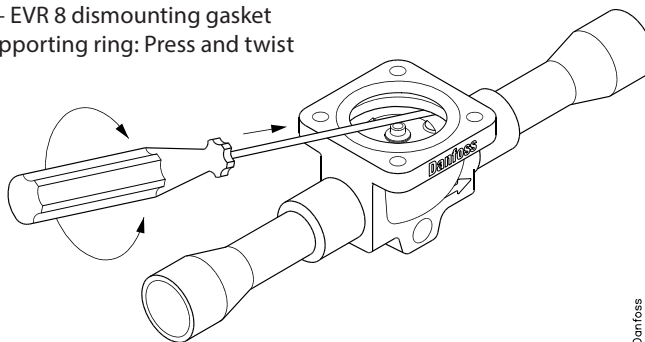


Type	[Nm]	[kpm]	[ft-lbs]	Torx size
EVR 10, EVR 15, EVR 18	2.8	0.3	2	T25
EVR 20, EVR 22	12	1.2	9	T40

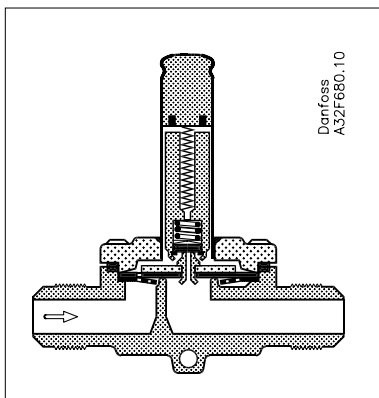
**Placement of valve seat**



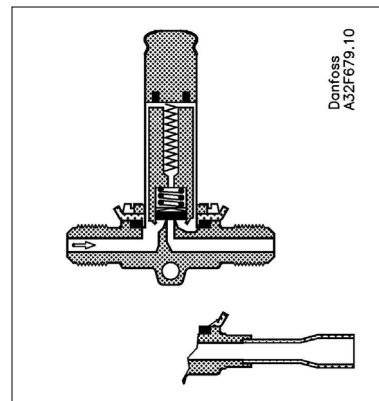
**EVR 4 – EVR 8 dismounting gasket and supporting ring: Press and twist**



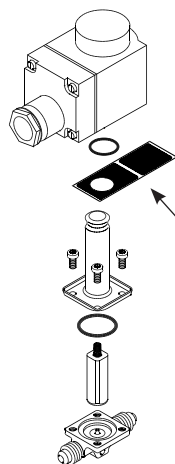
**EVR 10 – EVR 22 (NC)**



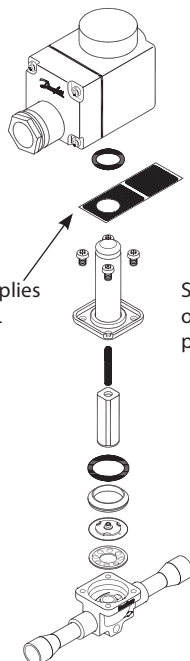
**EVR 2 – EVR 8 (NC)**



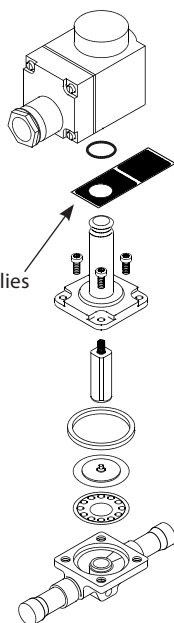
**EVR 2 – EVR 3 (NC)**



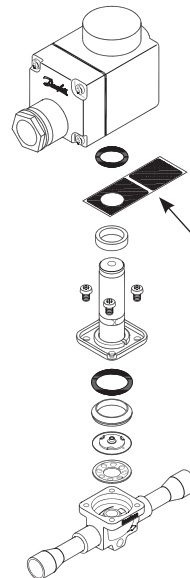
**EVR 4 – EVR 8 (NC)**



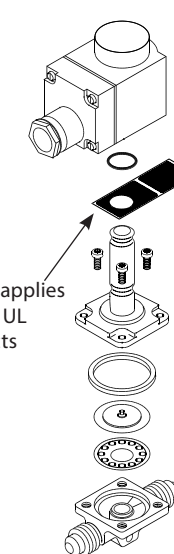
**EVR 10 – EVR 22 (NC)**



**EVR 4 – EVR 8 (NO)**



**EVR 10 – EVR 20 (NO)**



Sticker applies only to UL products

Sticker applies only to UL products

Sticker applies only to UL products