

Installation guide

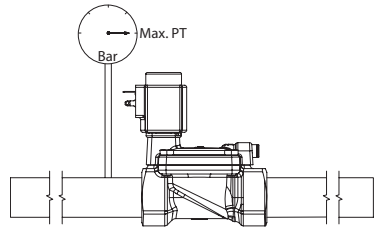
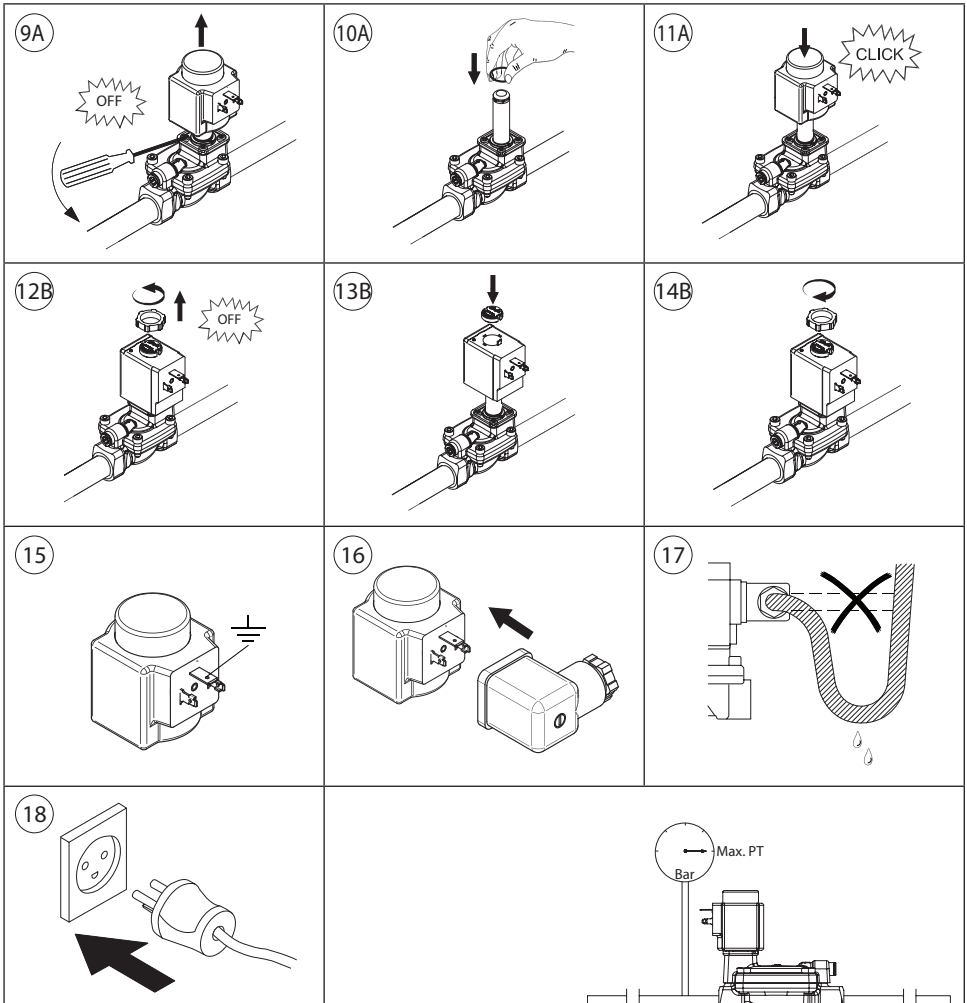
Solenoid valve

Type EV220BW 15-50

132R9000

132R9000

<p>A</p>	<p>B</p>	<p><input checked="" type="checkbox"/></p> <p>≥ 297 Microns</p> <p>ON OFF </p>
<p>1</p>	<p>2</p> <p>ID</p>	<p>3</p> <p>SOLENOID COIL BY ORDER OF 132R9000 E INCHES 132R9000 MADE IN DENMARK</p> <p>SOLENOID COIL BY ORDER OF 132R9000 E INCHES 132R9000 MADE IN DENMARK</p>
<p>4</p> <p><input checked="" type="checkbox"/></p> <p>15° 15°</p> <p>Max 30°</p>	<p>5</p> <p><input checked="" type="checkbox"/></p> <p>15° 15°</p> <p>Max 30°</p>	<p>6</p>
<p>7</p>	<p>8</p>	



Drinking water approval			
	Valid in	Certificate no.	
			DK, SE
*) http://publiccert.extweb.sp.se/sv/Product/List/ Wetted parts in accordance with DVGW, 4MS, KTW and W270			

DN	Max. Working Pressure (MWP)	Max. Test pressure (PT)
	[bar]	[bar]
15 - 20	10	25
25 - 50	10	25

EN 60730-2-8

Besök www.danfoss.se för mer tekniska data. Besøg www.danfoss.dk for flere tekniske data.
 Rendez-vous sur le site www.products.danfoss.fr pour plus de données techniques.
 Visit www.products.danfoss.com for further technical data. Para más información, visite www.products.danfoss.es