

High performance, hydraulic aluminum gear pumps and motors.

Lumi

Game changing high performance and cost effectiveness

Features

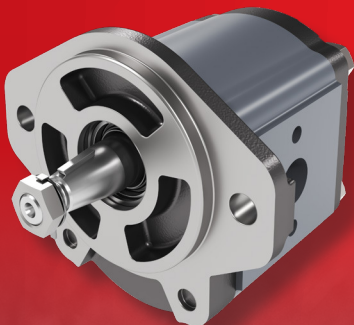
- **Frame size:** Gr2
- **Displacements** from 5.1 cm³/rev (0.31 in³/rev) to 24.0 cm³/rev (1.46 in³/rev)
- **Rated** pressure up to 240 bar (3480 psi)
- **Max speed** up to 4000 rpm
- **SAE, European, DIN & ISO Flange, Porting styles & Shaft options**
- **Built to ISO 9001 Standards**
- **Integral valving**

Benefits

- **12 Teeth gear design** with wide array of features for design flexibility and low-pressure ripples
- Pressure balance floating bushing for **optimized preload** on gear faces resulting in better efficiencies
- **Single** and **double** pump configuration
- Tandem pumps are separated by seals which enables **multi fluid capability**
- **Heavy-duty cast-iron** front flange and end cover improves durability
- **One piece** shaft construction
- Thrust bearing for **helical gear** interface for **AG tractors**

Markets

- **Golf**
- **Turf**
- **Forestry**
- **Landscaping**
- **Agriculture**
- **Construction**
- **Earthmoving**
- **Mining**
- **Material Handling**
- **Utility**
- **Truck & Bus**
- **Industrial**



Lumi AL Gear Pump Gr 2



Lumi AL Gear Motor Gr 2

Applications

- **Harvesters**
- **Machine Tools**
- **Compactors**
- **Sweepers**
- **Rotary & Reel Mowers**
- **Fan Drive Systems**
- **Forestry attachments**



Read more at www.danfoss.com

High performance, hydraulic aluminum gear pumps and motors.

Lumi

Game changing high performance and cost effectiveness

Features

- **Frame size:** Gr2
- **Displacements** from 5.1 cm³/rev (0.31 in³/rev) to 24.0 cm³/rev (1.46 in³/rev)
- **Rated** pressure up to 240 bar (3480 psi)
- **Max speed** up to 4000 rpm
- **SAE, European, DIN & ISO Flange, Porting styles & Shaft options**
- **Built to ISO 9001 Standards**
- **Integral valving**



Benefits

- **12 Teeth gear design** with wide array of features for design flexibility and low-pressure ripples
- Pressure balance floating bushing for **optimized preload** on gear faces resulting in better efficiencies
- **Single** and **double** pump configuration
- Tandem pumps are separated by seals which enables **multi fluid capability**
- **Heavy-duty cast-iron** front flange and end cover improves durability
- **One piece** shaft construction
- Thrust bearing for **helical gear** interface for **AG tractors**

Applications

- **Harvesters**
- **Machine Tools**
- **Compactors**
- **Sweepers**
- **Rotary & Reel Mowers**
- **Fan Drive Systems**
- **Forestry attachments**

Markets

- **Golf**
- **Turf**
- **Forestry**
- **Landscaping**
- **Agriculture**
- **Construction**
- **Earthmoving**
- **Mining**
- **Material Handling**
- **Utility**
- **Truck & Bus**
- **Industrial**