



Valve Assembly

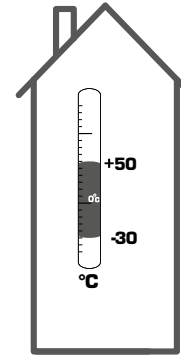


SERIES ARC300



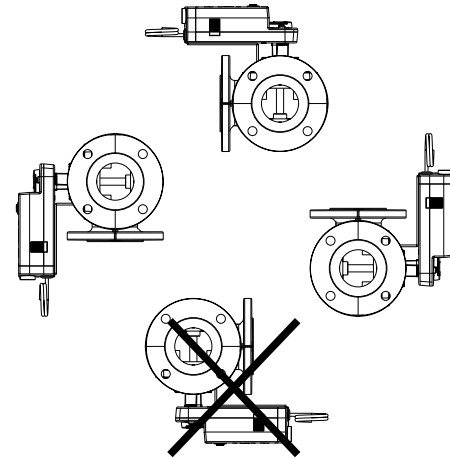
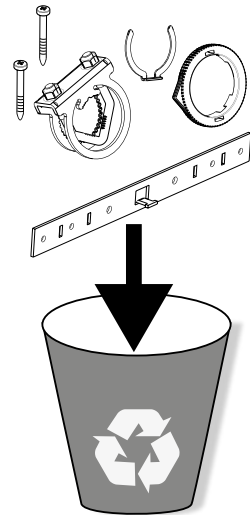
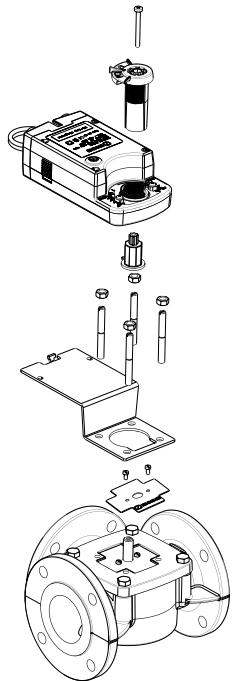
Series ARC300

CE
LVD 2006/95/EC valid until April 19th 2016
LVD 2014/35/EU valid from April 20th 2016
EMC 2004/108/EC valid until April 19th 2016
EMC 2014/30/EU valid from April 20th 2016
RoHS 2011/65/EU



Series 3F, 4F

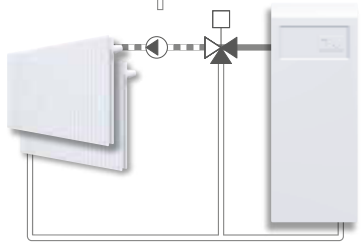
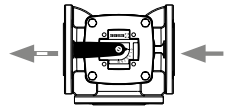
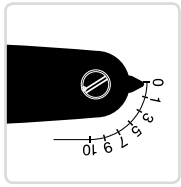
Mtrl.nr: 9814 09 38 • Ritn.nr 8453 vers. A • Rev 1512



Valve settings

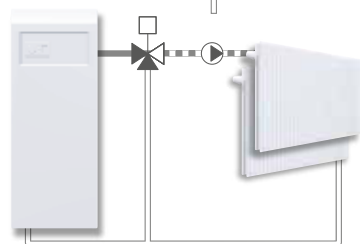
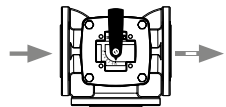
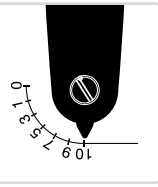
V 1A

R/CW



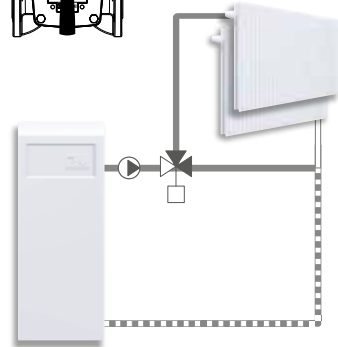
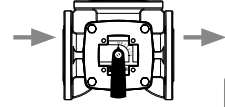
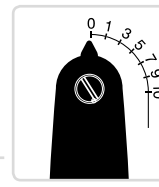
V 1B

L/CCW



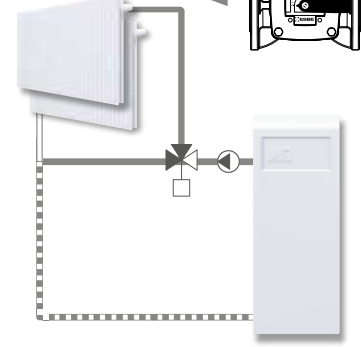
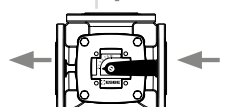
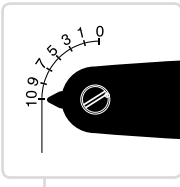
V 2A

R/CW



V 2B

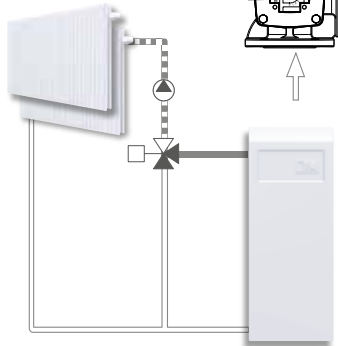
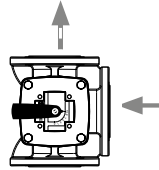
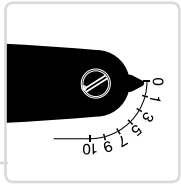
L/CCW



Valve settings

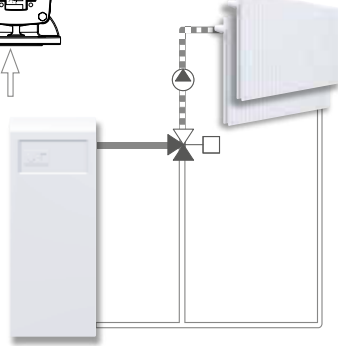
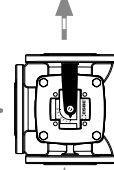
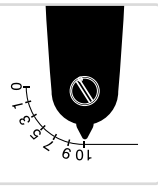
V 3A

R/CW



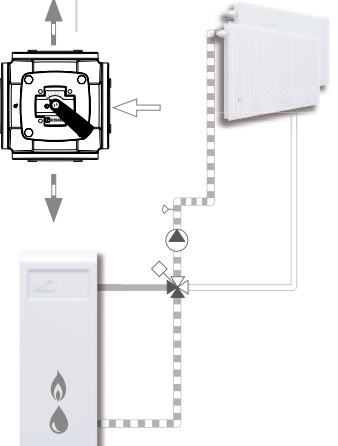
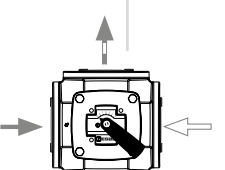
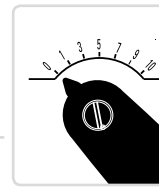
V 3B

L/CCW



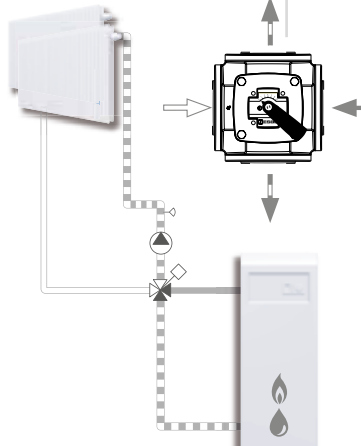
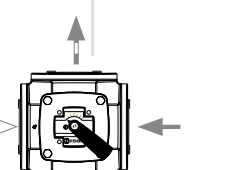
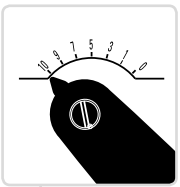
V 4A

R/CW



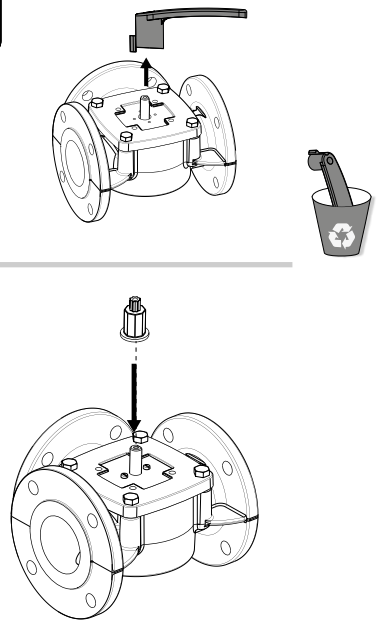
V 4B

L/CCW

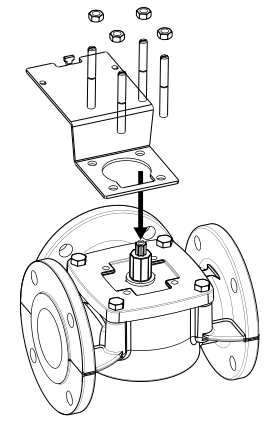


Valve Assembly

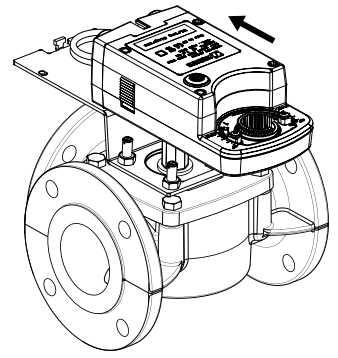
V5



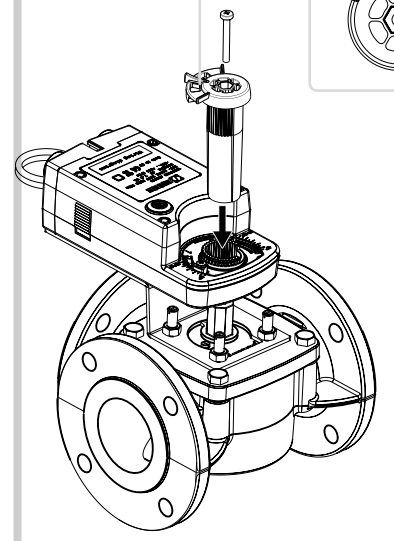
V6



V7

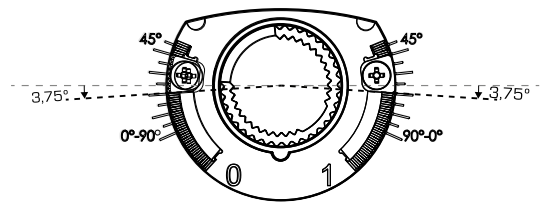
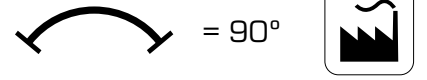


V8



Actuator Settings Valve Assembly

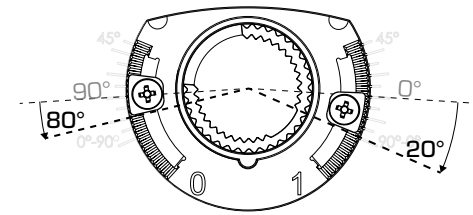
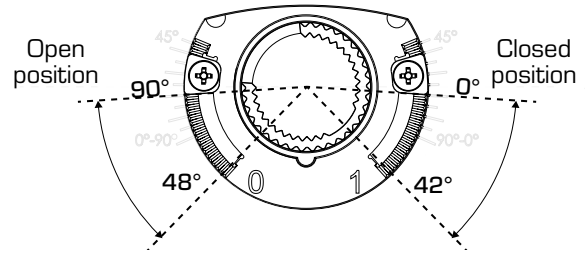
V9A



V9B

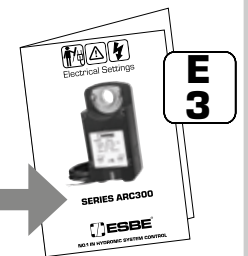
Limiting working range • Clockwise working direction (R/CW)

Example R/CW working range 20° - 80°



i

ARC368/
ARC369
Dip Switch 4

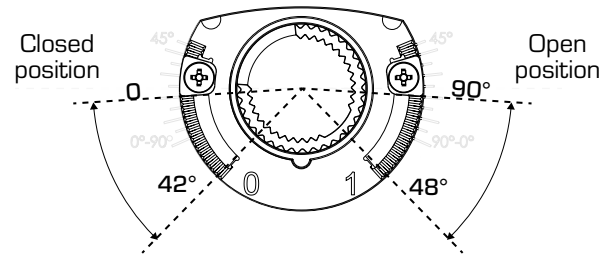


Max working range
0° - 90°

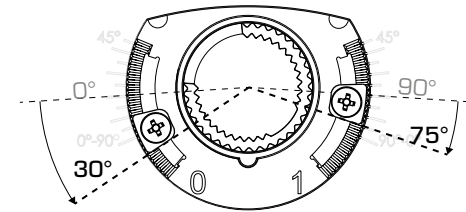


Limiting working range • Counter clockwise working direction (L/CCW)

Min working range
42° - 48°



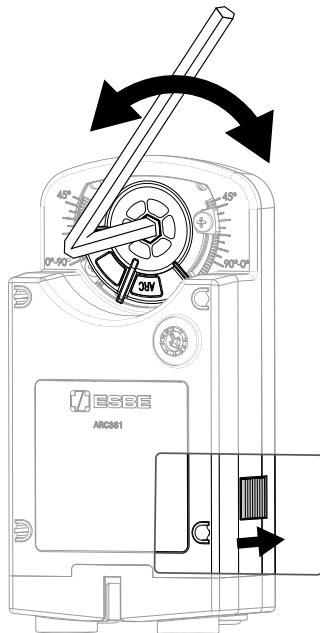
Exampel L/CCW working range 30°- 75°



ARC368/
ARC369
Dip Switch 4



Manual operation



ARC300
Electrical
Settings

