

Check Valves

RPC 04

Pilot Operated Check Valve, Port 1 Pilot to Open

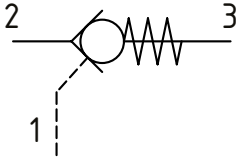
350 bar [5000 psi] • 21 l/min [5.5 US gpm]



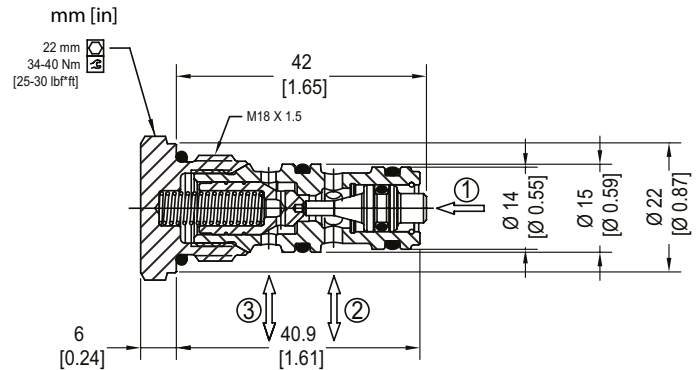
DESCRIPTION AND OPERATION

This is a pilot operated check valve where free flow takes place from port 2 to 3 and is blocked from port 3 to 2 until pilot pressure is applied to port 1.

SCHEMATIC



DIMENSIONS



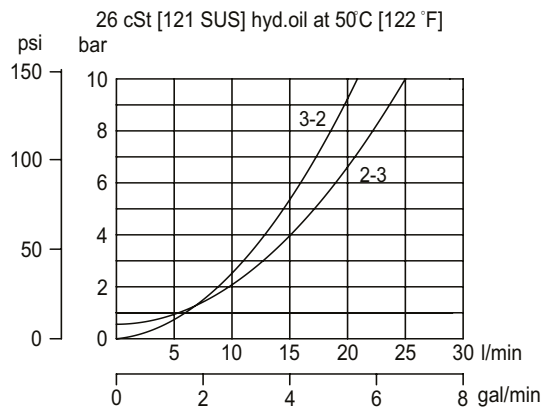
PERFORMANCE DATA

Rated pressure*	350 bar [5000 psi]
Rated flow at 7 bar [100 psi]	21 l/min [5.5 US gpm]
Weight	0.06 kg [0.13 lb]
Pilot Ratio	3.2:1
Cavity	NCS04/3

*Rated Pressure based on NFPA fatigue test standard [at 1 million cycles]
Note: A piston seal requires a 5 bar [72.5 psi] or greater return spring.

PERFORMANCE CURVES

Pressure drop



MODEL CODE

RPC04 - 2.5 - OR - 00 - V

Crack Pressure

Code	Bar	Psi
0.5	0.5	[7.3]
2.5	2.5	[36]
5	5	[73]
8	8	[116]
15	15	[218]

Pilot Seal Option

Omit - No seals
OR - Seals

Seal Option

Code	Seal kit
Omit-Buna-N	230000160
V-Viton	230000450

Housing

Code	Ports & Material	Housing Model Code
00	No Housing	No Housing
SE1/4	AL, 1/4 BSP	NCS04/3-SE-1/4
SE4S	AL, #4 SAE	NCS04/3-SE-4S
SE6S	AL, #6 SAE	NCS04/3-SE-6S

*Aluminum bodies are to be used for pressures less than 210 bar [3000 psi].

* Additional housings available