

Danfoss Hansen®

FD83 Full-Flow Quick Disconnect Coupling

Unique dual interlock safety feature.

Full-flow characteristics.

Characteristics:

- Compact stainless-steel construction extends life for safer operations, easy maintenance and space optimization.
- No spillage of fluid when connecting and disconnecting
- Proprietary profile with patented locking pin design and lever handle.



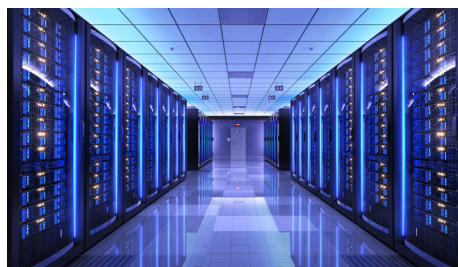
Markets/Applications

- Data center source line
- Electrification cooling
- Industrial fluid transfer



Sells Against

- Stäubli TDU 24 Series
- Johnson TSZ Series
- CEJN OCP Large QC



Features

- **Identical coupling halves** with safe mechanism to **prevent accidental opening** of coupling when disconnected and **no spillage**
- **Full-flow** feature **reduces pressure drop** and **maximizes system efficiency**
- **303 Stainless steel** body material and **EPDM** standard seal material for **high corrosion resistance** and broad **fluid compatibility**
- **2 Sizes available** (1" and 2") with different **end-connection types**

Order Fulfillment

- Standard FD83 configurations stocked in **AMER, APAC** and **EMEA** distribution centers.



Physical Characteristics

| Coupling Size (in) | Max. Operating Pressure | | | | | | Min. Burst Pressure | | | | | | Rated Flow (lpm) | Fluid Loss cc. max | CV value | |
|-----------------------|-------------------------|-------|--------------------|-------|--------------------|-------|---------------------|-------|--------------------|-------|--------------------|-------|---------------------|-----------------------|----------|-----|
| | Connected | | Socket/Female Half | | Socket/Female Half | | Connected | | Socket/Female Half | | Socket/Female Half | | | | | |
| | (bar) | (psi) | (bar) | (psi) | (bar) | (psi) | (bar) | (psi) | (bar) | (psi) | (bar) | (psi) | (gpm) | | | |
| 1 | 10 | 150 | 10 | 150 | 10 | 150 | 20 | 300 | 20 | 300 | 20 | 300 | 189 | 50 | 5.0 | 30 |
| 2 New! | 10 | 150 | 10 | 150 | 10 | 150 | 20 | 300 | 20 | 300 | 20 | 300 | 800 | 211 | 12 | 127 |

Flow Data

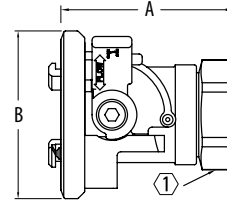
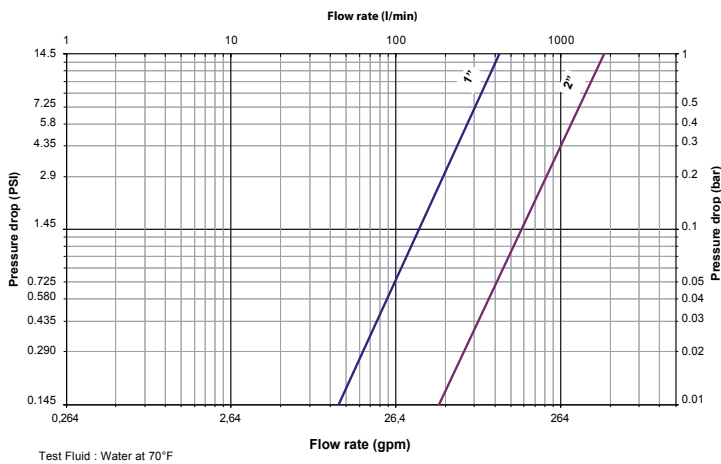


Figure 1

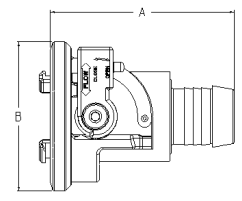


Figure 2

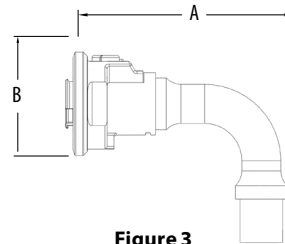


Figure 3

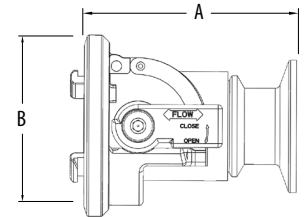


Figure 4

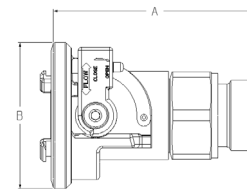


Figure 5

Dimensions

| Part Number | Body Size | Port Size | Thread | Type | Fig. | Dimensions | | Hex mm | Hex (in) | | |
|-----------------|-----------|-----------|-----------|--------------------|------|------------|--------|--------|----------|----|--------|
| | | | | | | A mm | A (in) | | | | |
| FD83-2052-16-16 | 1 | 1 | 1-11- 1/2 | Female NPTF | 1 | 95.5 | (3.76) | 71.6 | (2.82) | 41 | (1.63) |
| FD83-2052-12-16 | 1 | 3/4 | 3/4-14 | Female NPTF | 1 | 70.1 | (2.76) | 71.6 | (2.82) | 41 | (1.63) |
| FD83-2046-16-16 | 1 | 1 | NA | 1" Hose Barb | 2 | 84.2 | (3.31) | 71.6 | (2.82) | - | - |
| FD83-2092-16-16 | 1 | 1 | NA | 1" Hose Barb 90° | 3 | 125 | (4.92) | 71.6 | (2.82) | - | - |
| FD83-2096-16-16 | 1 | 1 | 1 5/16-12 | Male ORB | 5 | 95.5 | (3.76) | 71.6 | (2.82) | 41 | (1.63) |
| FD83-2140-16-16 | 1 | 1 | G1-11 | Male BSPP | 5 | 95.5 | (3.76) | 71.6 | (2.82) | 41 | (1.63) |
| FD83-2126-16-16 | 1 | 1 | G1-11 | Female BSPP | 1 | 84.3 | (3.32) | 71.6 | (2.82) | 41 | (1.63) |
| FD83-2128-16-16 | 1 | 1 | NA | Sanitary Flange 1" | 4 | 79.6 | (3.13) | 71.6 | (2.82) | - | - |
| FD83-2126-32-32 | 2 | 2 | G2-11 | Female BSPP | 1 | 122.4 | (4.82) | 105.3 | (4.15) | 70 | (2.76) |
| FD83-2128-32-32 | 2 | 2 | NA | Sanitary Flange 2" | 4 | 102.4 | (4.03) | 105.3 | (4.15) | - | - |
| FD83-2052-32-32 | 2 | 2 | 2-11- 1/2 | Female NPT | 1 | 122.4 | (4.82) | 105.3 | (4.15) | 70 | (2.76) |

Other end connections available upon request.

Danfoss Power Solutions

Nordborgvej 81, 6430 Nordborg, Denmark, Tel. +45 74 88 22 22, Fax +45 74 65 25 80
 www.danfoss.com, E-mail: info@danfoss.com

Danfoss can accept no responsibility for possible errors in catalogs, brochures and other printed material. Danfoss reserves the right to alter its products without notice. This also applies to products already on order provided that such alterations can be made without subsequent changes being necessary in specifications already agreed. All trademarks in this material are property of the respective companies. Danfoss and the Danfoss logotype are trademarks of Danfoss A/S. All rights reserved.