

Installation Guide

DEVIreg™ Smart

Intelligent Electronic Timer Thermostat or Timer Switch with Wi-Fi connectivity and App control

www.DEVI.com

DEVI® 
by Danfoss

Table of Contents

1	Introduction	2
2	Technical Specifications	4
3	Safety Instructions	6
4	Mounting Instructions	8
5	Display Symbols	13
6	Configuring	19
7	Settings	20
8	Warranty	23
9	Radio Equipment Directive	26
10	The UK Product Security and Telecommunications Infrastructure (Product Security) regime.	26
11	Disposal Instruction	28

1 Introduction

DEVIreg™ Smart is an electronic programmable timer thermostat used for controlling electrical floor heating elements. The thermostat is designed for fixed installation only and can be used for both direct heating of the entire room and for comfort heating of the floor. Among others, the thermostat has the following features:

- A touchscreen display with light.
- An easy-to-follow menu-driven programming and operation (requires an app).

- An installation wizard with room/floor type-specific setup (requires an app).
- Support for multiple frame systems.
- Compatible with several 3rd party NTC sensors.
- Thermostat settings can be specified before installation and imported to the thermostat using a web-generated code (For DEVIreg™ Touch), or copied from a thermostat in a similar installation. This includes DEVIreg™ Touch thermostats.
- Smart access via app to thermostat settings after installation, for easy access, setup or remote troubleshooting. Thermostat/timer will continuously be updated with newest version of software.
- DEVIreg™ Smart can be used as a switch for On/Off systems

Regarding Connectivity:

- 10 smart devices (like Smartphone or Tablet) can be connected to 1 thermostat/switch.
- 2 smart devices can be in contact with the thermostat/switch at the same time.


DEVIREG™ SMART REQUIRES WORKING Wi-Fi TO FUNCTION .

**More information on this product can also be found at:
devismart.com**

2 Technical Specifications

Operation voltage	220–240 V~, 50/60 Hz
Standby power consumption	Max. 0,40 W
Relay: Resistive load Inductive load	Max. 16 A / 3680 W @ 230 V Max. 1 A $\cos \varphi = 0,3$
Transmission Frequency	2,4 - 2,483.5 GHz
Transmission Power	< 20 dBm
Sensing units*	NTC 6,8 kOhm at 25 °C NTC 10 kOhm at 25 °C NTC 12 kOhm at 25 °C NTC 15 kOhm at 25 °C (Default) NTC 33 kOhm at 25 °C NTC 47 kOhm at 25 °C
Sensing values*: (Default NTC 15 K) 0 °C 20 °C 50 °C	42 kOhm 18 kOhm 6 kOhm
Control*	PWM (Pulse Wide Modulation)

Ambient temperature	0 °C to 30 °C
Frost protection temperature*	5 °C to 9 °C (default 5 °C)
Temperature range*	Room temperature: 5 °C to 35 °C. Floor temperature: 5 °C to 45 °C. Max. floor: 20 °C to 35 °C (if unrecoverable seal is broken then up to 45 °C). Min. floor: 10 °C to 35 °C, only with combination of room and floor sensor.
Sensor failure monitoring*	The thermostat has a built-in monitoring circuit, which will switch off the heating if the sensor is disconnected or short-circuited.
Timer functions	2 periods per day for DEVIweb™. 5 periods per day for DEVIsmart App. All clock/date/schedule settings are updated from the cloud. Set-point resolution of timer is 30 minutes.
Cable specification max.	1x4 mm ²
Ball pressure test temperature	75 °C
Pollution degree	2 (domestic use)
Controller type	1C
Software class	A
Storage temperature	-20 °C to +65 °C

IP class	21
Protection class	Class II - 
Dimensions	85 x 85 x 20-24 mm (in-wall depth: 22 mm)
Weight	127 g

* not relevant for switch function

Electrical safety and Electro-Magnetic Compatibility for this product is covered by the compliance with the EN/IEC Standard “Automatic electrical controls for household and similar use”:

- EN/IEC 60730-1 (general)
- EN/IEC 60730-2-7 (timer)
- EN/IEC 60730-2-9 (thermostat)

3 Safety Instructions

Make sure the mains supply to the thermostat/switch is turned off before installation.

Important: When the thermostat is used to control a floor heating element in connection with a wooden floor or similar material, always use a floor sensor and never set the maximum floor temperature to more than 35 °C.

Please also note the following:

- The installation of the thermostat/switch must be done by an authorized and qualified installer according to local regulations.
- The thermostat/switch must be connected to a power supply via an all-pole disconnection switch.
- Always connect the thermostat/switch to continuous power supply.
- Do not expose the thermostat/switch to moisture, water, dust, and excessive heat.
- This thermostat/switch can be used by children aged from 8 years and above and persons with reduced physical, sensory or mental capabilities or lack of experience and knowledge, if they have been given supervision or instruction concerning use of the appliance in a safe way and understand the hazards involved, by a person responsible for their safety.
- DEVIreg™ Smart can be modified to work as a timer on/off switch by downloading new software with new functionality.
- Children should be supervised to ensure that they do not play with the thermostat/switch.
- Switch is designed for permanent operation.
- Not for fluorescent lamps and filament lamps.
- Cleaning and user maintenance shall not be made by children without supervision.
- Updating to timer switch function may take up to 1 hour. Same time should be expected if function is to be rolled back to thermostat functionality.

4 Mounting Instructions

Please observe the following placement guidelines:



Place the thermostat at a suitable height on the wall (typically 80–170 cm). Switch can be placed on free area on the wall.



The thermostat/switch should not be placed in wet rooms. Thermostat/switch must be placed outside zone 2. Place it in an adjacent room and use floor sensor only. Always place the thermostat/switch according to local regulation on IP classes.



Do not place the thermostat on the inner side of a poorly insulated exterior wall.



Always install the thermostat at least 50 cm from windows and doors, due to draft, when using regulation in: floor and room mode or room alone mode.

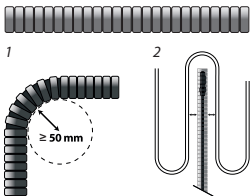


Do not place the thermostat in a way that it will be exposed to direct sunlight.



Note for thermostat: A floor sensor is recommended in all floor heating applications and **mandatory** to thin mats and under wooden floors to reduce the risk of over-heating the floor.

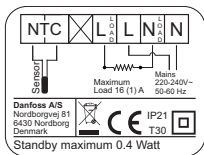
- Place the floor sensor in a protecting plastic conduit in the floor construction in an appropriate place, where the floor is not exposed to sunlight or draft from door openings.
- Equally distant and >2 cm from the heating cables on both sides.
- The conduit should be flush with the floor surface, countersink the conduit if necessary and possible.
- Route the conduit to the connection box.
- The bending radius of the conduit must be min 50 mm.



Follow the steps below to mount the thermostat/switch:

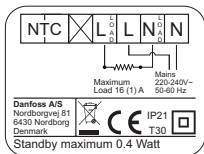
1. Unpack thermostat/switch.
- 2.1. Connect the thermostat according to the connection diagram.

The screen of the heating cable must be connected to the earth conductor of the power supply cable by using a separate connector.



Note: Always install the floor sensor in a conduit in the floor.

- 2.2. Connect the switch according to the connection diagram.



3. Fasten the thermostat/switch firmly to a flush mounted wall box or an exterior wall box by driving

the screws through the holes in each side of the thermostat/switch.

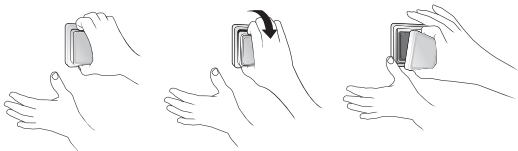
4. Add the frame before assembling of top part to the snap locks/bottom part.
5. Click the front part module in place. Pay attention, in relation to the female header, in not to bending the connectors. Press carefully until the frame is fixed against the rubber gasket.



Important: Do NOT press in the center of the display screen.

When mounting and reassembling the thermostat/switch.

Press your fingers under the top of the front part and pull toward you until it releases from the snap lock:



To ensure that the batteries are fully charged, the thermostat/switch shall be connected to main supply for minimum 15 hours.

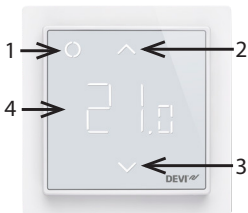
All other settings are stored permanently.

5 Display Symbols

Top part main functionalities are to support user interface through display and hold all the controller logic.

Display main functionalities are to show the current status of the thermostat/switch and recognize the user actions from the buttons. Display consists of different buttons, numbers and symbols.

Thermostat



Switch



Nr.	Type	Description
1	Button/Symbol	Control button
2	Button/Symbol	Arrow Up button
3	Button/Symbol	Arrow Down button
4	Symbol	Thermostat function: 3 digit 7 segment numbers with comma separator for temperature indication. Timer switch function: "On"/"Off" text.

Symbol indications

Indication	Mode/State	Description
Blue - blinking	Access Point Mode	Thermostat/switch ready for set-up
Blue	Access Point Mode	Smart phone connected directly to thermostat/switch for set-up
Red - blinking	Fault state	Displays Error code
Red - slow pulsing	Active Mode	Indicating heating the floor (Relay on)
Green - constant	Active Mode	Thermostat/switch active and connected to Wi-Fi (Relay off)

Green – blinking	Active Mode & Access Point Mode	Thermostat/switch waiting for confirmation of action
Arrows – blinking rapidly when touched	Active Mode	Safety lock is on

Interaction directly on thermostat

Function	Button	Description
Turn thermostat/switch on	1. Touch any button 2. Touch control button (1)	Thermostat/switch turn on and display temperature or On/Off states
Turn thermostat/switch off	1. Touch any button 2. Touch and hold control button (1)	Thermostat/switch display will turn on Thermostat switch count down and switch off
Adjust set-point	Up (2)	Overrule timer and switch on/temporary set point
	Down (3)	Overrule timer and switch off/temporary set point

Frost protection	Touch and hold Control (1) for 1 sec.	Deactivate frost protection
Safety lock	Touch and hold Up (2) + Down (3) for 3 sec.	Activate/Deactivate safety lock
Factory restore	Touch and hold Control (1) + Up (2) for 5 sec. After that touch Control (1) again to confirm	Activates factory restore state
Away mode	Touch and hold Control (1) for 1 sec. to deactivate Away mode	Activate/Deactivate Away/Vacation mode

Error codes

When the error occurs and is resolved, the thermostat, in some cases, will require a restart to start heating again.

Error type	Nr.	Description	Solution	Need restart
Floor Sensor disconnected	E1	Connection to sensor is lost	Contact service	The thermostat requires a restart to operate again.
Floor Sensor short-circuited	E2	Sensor short-circuited	Contact service	The thermostat requires a restart to operate again.
Thermostat overheated	E3	Thermostat is overheated, heating is turned off	Wait until thermostat cools down	The thermostat requires no restart, but will start heating when the temperature is lowered
Unrecoverable error	E4	Room temperature sensor value too high or too low	Contact service	The thermostat requires a restart to operate again.

Communication Error Codes

Communication error	Nr.	Description
Wrong SSID or password	C1	STA trying to connect to the AP
No IP address	C2	STA - connection acquired, no IP yet, waiting for configuration data.
No internet connection	C3	STA connected and has an IP from DHCP server.

6 Configuring

Download App

Download the DEVIsmart™ app from App Store or Google Play or at devismart.com.



Find Wi-Fi name and password for the Wi-Fi network, that you would like to connect your thermostat/switch to. If in doubt contact network administrator or internet service provider.

Identify your floor sensor type (in kOhm).

Identify your installed output (in W), from label on the heating element/equipment.

Power on the thermostat, and it will show “-” in the display. Then it is ready to be configured using your iPhone and Android device.



Open the DEVIsmart™ App. Follow instructions and set-up flow in the App.

DEVIreg™ Smart indication

The DEVIreg™ Smart shows “-” indicating that power is ON, but still need to be configured.

7 Settings

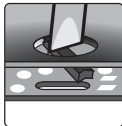
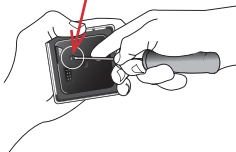


IMPORTANT DURING THERMOSTAT SET-UP

Select whether only a floor sensor or a combination of room and floor sensor should be used.



A “room only” option is also available, but requires that you have to break the small plastic seal and the seal in the print board below, on the back of the display module, e.g. using a screwdriver; reset is needed; it will be possible to set the



maximum floor temperature up to 45 °C. Furthermore, it will be possible to use only a room sensor. However, this option is not recommended due to an increased risk of overheating the floor.

IMPORTANT: When the thermostat is used to control a floor heating element in connection with a wooden floor or similar material, always use a floor sensor and never set the maximum floor temperature to more than 35 °C.

Note: Please contact the floor supplier before changing the maximum floor temperature and be aware of the following:

- The floor temperature is measured there, where the sensor is placed.
- The temperature of the bottom of a wooden floor can be up to 10 °C higher than the top.
- Floor manufactures often specify the max. temperature on the top surface of the floor.

Thermal resistance [m²K/W]	Examples of flooring	Details kg/m³	Approximate setting for 25°C floor temperature
0,05	8 mm HDF based laminate	> 800	28 °C
0,10	14 mm beech parquet	650 – 800	31 °C
0,13	22 mm solid oak plank	> 800	32 °C
< 0,17	Max. carpet thickness suitable for floor heating	acc. to EN 1307	34 °C
0,18	22 mm solid fir planks	450 – 650	35 °C

IMPORTANT DURING SWITCH SET-UP

To use the switch function, it requires that you have to break the small seals on the back of the display module, e.g. using a screwdriver, by the same actions as described for thermostat.

8 Warranty

A 5-year product warranty is valid for:

- thermostats: DEVIreg™ Smart.

Should you, against all expectations, experience a problem with your DEVI product, you will find that Danfoss offers DEVIwarranty valid from the **date of purchase** on the following conditions:

During the warranty period Danfoss shall offer a new comparable product or repair the product if the product is found to be faulty by reason of defective design, materials or workmanship. The repair or replacement.

The decision to either repair or replace will be solely at the discretion of Danfoss. Danfoss shall not be liable for any consequential or incidental damages including, but not limited to, damages to property or extra utility expenses. No extension of the warranty period following repairs undertaken is granted.

The warranty shall be valid only if the WARRANTY CERTIFICATE is completed correctly and in accordance with the instructions, the fault is submitted to the installer or the seller without undue delay and proof of purchase is provided. Please note that the WARRANTY CERTIFICATE must be filled in, stamped and signed by the authorized installer performing the installation (Installation date must be indicated). After the installation is performed, store and keep the WARRANTY CERTIFICATE and purchase documents (invoice, receipt or similar) during the whole warranty period.

DEVIwarranty shall not cover any damage caused by incorrect conditions of use, incorrect installation or if installation has been carried out by non-authorized electricians. All work will be invoiced in full if Danfoss is required to inspect or repair faults that have arisen as a result of any of the above. The DEVIwarranty shall not extend to products which have not been paid in full. Danfoss will, at all times, provide a rapid and effective response to all complaints and inquiries from our customers.

The warranty explicitly excludes all claims exceeding the above conditions.

For full warranty text visit **www.devi.com**.
devi.danfoss.com/en/warranty/



WARRANTY CERTIFICATE

The DEVIwarranty is granted to:

Address _____ Stamp _____

Purchase date _____

Serial number of the
product _____

Product _____ Art. No. _____

*Connected output [W] _____

Installation Date
& Signature _____ Connection Date
& Signature _____

**Not mandatory*

9 Radio Equipment Directive

SIMPLIFIED EU DECLARATION OF CONFORMITY

The simplified EU declaration of conformity referred to in article 10(9) shall be provided as follows:

Hereby, Danfoss A/S declares that the radio equipment type i.e. DEVIreg Smart is in compliance with Directive 2014/53/EU.

The full text of the EU declaration of conformity is available at the following internet address:

<https://assets.danfoss.com/approvals/latest/238288/ID365935501519-0501.pdf>

10 The UK Product Security and Telecommunications Infrastructure (Product Security) regime

The product is a **UK consumer connectable product**, which means it can be connected to the internet or another network, and is intended for use by consumers in the UK.

The product complies with the following minimum security requirements as specified in the Product Security and Telecommunications Infrastructure (Security Requirements for Relevant Connectable Products) Regulations 2023, which implement Part 1 of the Product Security and Telecommunications Infrastructure Act 2022

[https://www.legislation.gov.uk/ukpga/2022/46/part/1/enacted:](https://www.legislation.gov.uk/ukpga/2022/46/part/1/enacted)

- **No universal default passwords:** The product does not have any pre-set or hard-coded passwords.
- **Implement a means to manage reports of vulnerabilities:** You can report any vulnerabilities by visiting our website:
<https://www.danfoss.com/en/service-and-support/report-security-vulnerability/>
- **Provide transparency and automatic update of firmware:** The product supports security updates for at least five years from the date of purchase. The product will also automatically detect and install the updates on firmware once an hour and on every boot. This requires internet connectivity.

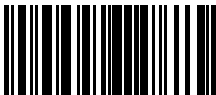
11 Disposal Instruction



This symbol on the product indicates that it may not be disposed of as household waste.

It must be handed over to the applicable take-back scheme for the recycling of electrical and electronic equipment.

- Dispose of the product through channels provided for this purpose.
- Comply with all local and currently applicable laws and regulations.



8096265

Danfoss A/S

Nordborgvej 81
6430 Nordborg, Syddanmark
Denmark**IMPORTER****UK: Danfoss Ltd., 22 Wycombe End, HP9 1NB, GB****Danfoss A/S**

DEVI • devil.com • +45 7488 2222 • EH@danfoss.com

Any information, including, but not limited to information on selection of product, its application or use, product design, weight, dimensions, capacity or any other technical data in product manuals, catalogue descriptions, advertisements, etc. and whether made available in writing, orally, electronically, online or via download, shall be considered informative, and is only binding if and to the extent, explicit reference is made in a quotation or order confirmation. Danfoss cannot accept any responsibility for possible errors in catalogues, brochures, videos and other material. Danfoss reserves the right to alter its products without notice. This also applies to products ordered but not delivered provided their such alterations can be made without changes to form, fit or function of the product.

 trademarks in this material are property of Danfoss A/S or Danfoss group companies. Danfoss and the Danfoss logo are trademarks of Danfoss A/S. All rights reserved.