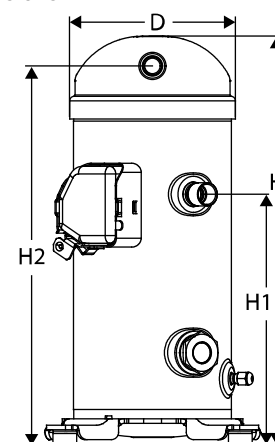


## General Characteristics

Model number (on compressor nameplate)		<b>VZH065CGANB</b>
Code number for Singlepack*		120G0152
Code number for Industrial pack**		120G0146
Drawing number		8590007
Suction and discharge connections		Brazed
Suction connection		7/8 " ODF
Discharge connection		3/4 " ODF
Oil sight glass		None
Oil equalisation connection		None
Oil drain connection		1/4" flare
LP gauge port		None
IPR valve		None
Swept volume	65.1 cm <sup>3</sup> /rev	
Net weight	35 kg	
Oil charge	1.57 litre, PVE - FVC32D	
Maximum number of starts per hour	12	
Refrigerant charge limit	5.4 kg	
Approved refrigerants	R410A	

## Dimensions



D=184 mm

H=455 mm

H1=280 mm

H2=422 mm

H3=- mm

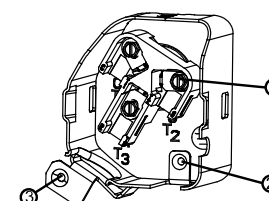
## Electrical Characteristics

Nominal voltage	Supply voltage 380-480V/3/50-60Hz
Voltage range	342-528 V supply to frequency converter
Winding resistance (between phases) +/- 7% at 25°C	0.177 Ω
Rated Load Amps (RLA)	27.2 A
Motor protection	Motor protection by frequency converter

## Recommended Installation torques

Oil sight glass	52.5 Nm
Power connections / Earth connection	3 Nm / 2 Nm
Mounting bolts	11 Nm

## Terminal box



## Parts shipped with compressor

Mounting kit with grommets and sleeves
Initial oil charge
Installation instructions

**Approvals :** CE certified, UL certified (file SA6873), -

\*Singlepack: Compressor in cardboard box

\*\*Industrial pack: 12 Unboxed compressors on pallet (order per multiples of 12)

IP22

1: Power connections

2: Earth connection

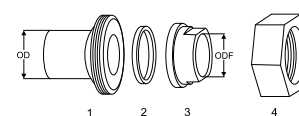
3: EMC bracket with shielded cable

**Rotolock accessories, suction side**
**Code no.**

Rotolock valve, V05 (1-1/4" Rotolock, 7/8" ODF)	8168030
Gasket, 1-1/4"	8156131

**Rotolock accessories, discharge side**
**Code no.**

Solder sleeve, P04 (1-1/4" Rotolock, 3/4" ODF)	8153008
Rotolock valve, V04 (1-1/4" Rotolock, 3/4" ODF)	8168029
Rotolock valve, V04 (1-1/4" Rotolock, 3/4" ODF)	8168029
Gasket, 1-1/4"	8156131

**Solder sleeve adapter set**


- 1: Rotolock adapter (Suc & Dis)
- 2: Gasket (Suc & Dis)
- 3: Solder sleeve (Suc & Dis)
- 4: Rotolock nut (Suc & Dis)

**Rotolock accessories, sets**
**Code no.**

Solder sleeve adapter set (1-1/4" Rotolock, 7/8" ODF), (1-1/4" Rotolock, 3/4" ODF)	120Z0128
Gasket set, 1", 1-1/4", 1-3/4", OSG gaskets black & white	8156009

**Oil / lubricants**
**Code no.**
**Crankcase heaters**
**Code no.**

Belt type crankcase heater, 65 W, 230 V, CE mark, UL	120Z0059
Belt type crankcase heater, 65 W, 400 V, CE mark, UL	120Z0060
Belt type crankcase heater, 70 W, 460 V, UL	120Z5012
Belt type crankcase heater, 70 W, 575 V, UL	120Z5013

**Miscellaneous accessories**
**Code no.**

Acoustic hood	120Z5084
---------------	----------

**Spare parts**
**Code no.**

Mounting kit for 1 scroll compressor including 4 grommets, 4 sleeves, 4 bolts, 4 washers, 2 grounding screws	120Z0622
Terminal box cover	120Z5018

**Performance data at 17 Hz, EN 12900 rating conditions**
**R410A**

Cond. temp. in °C (tc)	Evaporating temperature in °C (to)								
	-25	-15	-10	-5	0	5	10	20	25

**Cooling capacity in W**

10	-	3 849	4 614	5 405	6 227	7 088	-	-	-
20	-	3 250	4 136	5 048	5 991	6 971	7 993	-	-
30	-	2 319	3 311	4 328	5 375	6 458	7 583	-	-
40	-	-	-	-	-	-	-	-	-
45	-	-	-	-	-	-	-	-	-
50	-	-	-	-	-	-	-	-	-
60	-	-	-	-	-	-	-	-	-
65	-	-	-	-	-	-	-	-	-

**Power input in W**

10	-	680	671	626	530	367	-	-	-
20	-	812	817	815	791	729	613	-	-
30	-	1 102	1 061	1 041	1 027	1 004	956	-	-
40	-	-	-	-	-	-	-	-	-
45	-	-	-	-	-	-	-	-	-
50	-	-	-	-	-	-	-	-	-
60	-	-	-	-	-	-	-	-	-
65	-	-	-	-	-	-	-	-	-

**Current consumption in A**

10	-	0.98	0.64	0.29	-0.05	-0.36	-	-	-
20	-	2.13	1.98	1.76	1.50	1.21	0.91	-	-
30	-	2.68	2.78	2.77	2.65	2.45	2.18	-	-
40	-	-	-	-	-	-	-	-	-
45	-	-	-	-	-	-	-	-	-
50	-	-	-	-	-	-	-	-	-
60	-	-	-	-	-	-	-	-	-
65	-	-	-	-	-	-	-	-	-

**Mass flow in kg/h**

10	-	67	79	92	105	119	-	-	-
20	-	60	76	91	107	123	140	-	-
30	-	47	66	86	105	125	145	-	-
40	-	-	-	-	-	-	-	-	-
45	-	-	-	-	-	-	-	-	-
50	-	-	-	-	-	-	-	-	-
60	-	-	-	-	-	-	-	-	-
65	-	-	-	-	-	-	-	-	-

**Coefficient of performance (C.O.P.)**

10	-	5.66	6.88	8.64	11.76	19.33	-	-	-
20	-	4.00	5.06	6.19	7.57	9.57	13.04	-	-
30	-	2.10	3.12	4.16	5.23	6.43	7.93	-	-
40	-	-	-	-	-	-	-	-	-
45	-	-	-	-	-	-	-	-	-
50	-	-	-	-	-	-	-	-	-
60	-	-	-	-	-	-	-	-	-
65	-	-	-	-	-	-	-	-	-

**Nominal performance at to = 5 °C, tc = 50 °C**

Cooling capacity	-	W
Power input	-	W
Current consumption	-	A
Mass flow	-	kg/h
C.O.P.	-	

to: Evaporating temperature at dew point

tc: Condensing temperature at dew point

Rating conditions : Superheat = 10 K , Subcooling = 0 K

**Pressure switch settings**

Maximum HP switch setting	43.7	bar(g)
Minimum LP switch setting	1.5	bar(g)
LP pump down setting	1.5	bar(g)

**Sound power data**

Sound power level	dB(A)
With accoustic hood	dB(A)

Tolerance according EN12900

Danfoss can accept no responsibility for possible errors in catalogues, brochures and other printed material. Danfoss reserves the right to alter its products without notice. This also applies to products already on order provided that such alternations can be made without subsequential changes being necessary in specifications already agreed. All trademarks in this material are property of the respective companies. Danfoss and the Danfoss logotype are trademarks of Danfoss A/S. All rights reserved.

**Performance data at 17 Hz, ARI rating conditions**
**R410A**

Cond. temp. in °C (tc)	Evaporating temperature in °C (to)								
	-25	-15	-10	-5	0	5	10	20	25

**Cooling capacity in W**

10	-	4 077	4 884	5 717	6 583	7 488	-	-	-
20	-	3 468	4 411	5 379	6 379	7 417	8 499	-	-
30	-	2 499	3 565	4 656	5 777	6 936	8 137	-	-
40	-	-	-	-	-	-	-	-	-
45	-	-	-	-	-	-	-	-	-
50	-	-	-	-	-	-	-	-	-
60	-	-	-	-	-	-	-	-	-
65	-	-	-	-	-	-	-	-	-

**Power input in W**

10	-	680	671	626	530	367	-	-	-
20	-	812	817	815	791	729	613	-	-
30	-	1 102	1 061	1 041	1 027	1 004	956	-	-
40	-	-	-	-	-	-	-	-	-
45	-	-	-	-	-	-	-	-	-
50	-	-	-	-	-	-	-	-	-
60	-	-	-	-	-	-	-	-	-
65	-	-	-	-	-	-	-	-	-

**Current consumption in A**

10	-	0.98	0.64	0.29	-0.05	-0.36	-	-	-
20	-	2.13	1.98	1.76	1.50	1.21	0.91	-	-
30	-	2.68	2.78	2.77	2.65	2.45	2.18	-	-
40	-	-	-	-	-	-	-	-	-
45	-	-	-	-	-	-	-	-	-
50	-	-	-	-	-	-	-	-	-
60	-	-	-	-	-	-	-	-	-
65	-	-	-	-	-	-	-	-	-

**Mass flow in kg/h**

10	-	66	79	91	104	118	-	-	-
20	-	60	75	91	106	122	139	-	-
30	-	47	66	85	104	124	144	-	-
40	-	-	-	-	-	-	-	-	-
45	-	-	-	-	-	-	-	-	-
50	-	-	-	-	-	-	-	-	-
60	-	-	-	-	-	-	-	-	-
65	-	-	-	-	-	-	-	-	-

**Coefficient of performance (C.O.P.)**

10	-	6.00	7.28	9.13	12.43	20.42	-	-	-
20	-	4.27	5.40	6.60	8.06	10.18	13.87	-	-
30	-	2.27	3.36	4.47	5.63	6.91	8.51	-	-
40	-	-	-	-	-	-	-	-	-
45	-	-	-	-	-	-	-	-	-
50	-	-	-	-	-	-	-	-	-
60	-	-	-	-	-	-	-	-	-
65	-	-	-	-	-	-	-	-	-

**Nominal performance at to = 7.2 °C, tc = 54.4 °C**

Cooling capacity	-	W
Power input	-	W
Current consumption	-	A
Mass flow	-	kg/h
C.O.P.	-	

to: Evaporating temperature at dew point

tc: Condensing temperature at dew point

Rating conditions : Superheat = 11.1 K , Subcooling = 8.3 K

**Pressure switch settings**

Maximum HP switch setting	43.7	bar(g)
Minimum LP switch setting	1.5	bar(g)
LP pump down setting	1.5	bar(g)

**Sound power data**

Sound power level	dB(A)
With accoustic hood	dB(A)

Tolerance according EN12900

Danfoss can accept no responsibility for possible errors in catalogues, brochures and other printed material. Danfoss reserves the right to alter its products without notice. This also applies to products already on order provided that such alternations can be made without subsequential changes being necessary in specifications already agreed. All trademarks in this material are property of the respective companies. Danfoss and the Danfoss logotype are trademarks of Danfoss A/S. All rights reserved.

**Performance data at 20 Hz, EN 12900 rating conditions**
**R410A**

Cond. temp. in °C (tc)	Evaporating temperature in °C (to)								
	-25	-15	-10	-5	0	5	10	20	25

**Cooling capacity in W**

10	-	4 595	5 530	6 520	7 573	8 696	-	-	-
20	-	3 940	4 989	6 089	7 250	8 479	9 784	-	-
30	-	2 934	4 073	5 262	6 509	7 821	9 207	-	-
40	-	-	-	-	-	-	-	-	-
45	-	-	-	-	-	-	-	-	-
50	-	-	-	-	-	-	-	-	-
60	-	-	-	-	-	-	-	-	-
65	-	-	-	-	-	-	-	-	-

**Power input in W**

10	-	787	766	701	575	371	-	-	-
20	-	963	965	954	912	823	670	-	-
30	-	1 289	1 252	1 232	1 212	1 176	1 105	-	-
40	-	-	-	-	-	-	-	-	-
45	-	-	-	-	-	-	-	-	-
50	-	-	-	-	-	-	-	-	-
60	-	-	-	-	-	-	-	-	-
65	-	-	-	-	-	-	-	-	-

**Current consumption in A**

10	-	1.31	1.02	0.69	0.34	-0.03	-	-	-
20	-	2.36	2.23	2.04	1.79	1.49	1.15	-	-
30	-	2.97	3.05	3.03	2.92	2.72	2.45	-	-
40	-	-	-	-	-	-	-	-	-
45	-	-	-	-	-	-	-	-	-
50	-	-	-	-	-	-	-	-	-
60	-	-	-	-	-	-	-	-	-
65	-	-	-	-	-	-	-	-	-

**Mass flow in kg/h**

10	-	80	95	111	127	145	-	-	-
20	-	73	91	110	130	150	172	-	-
30	-	60	82	104	127	151	176	-	-
40	-	-	-	-	-	-	-	-	-
45	-	-	-	-	-	-	-	-	-
50	-	-	-	-	-	-	-	-	-
60	-	-	-	-	-	-	-	-	-
65	-	-	-	-	-	-	-	-	-

**Coefficient of performance (C.O.P.)**

10	-	5.84	7.22	9.31	13.18	23.45	-	-	-
20	-	4.09	5.17	6.38	7.95	10.30	14.61	-	-
30	-	2.28	3.25	4.27	5.37	6.65	8.33	-	-
40	-	-	-	-	-	-	-	-	-
45	-	-	-	-	-	-	-	-	-
50	-	-	-	-	-	-	-	-	-
60	-	-	-	-	-	-	-	-	-
65	-	-	-	-	-	-	-	-	-

**Nominal performance at to = 5 °C, tc = 50 °C**

Cooling capacity	-	W
Power input	-	W
Current consumption	-	A
Mass flow	-	kg/h
C.O.P.	-	

to: Evaporating temperature at dew point

tc: Condensing temperature at dew point

Rating conditions : Superheat = 10 K , Subcooling = 0 K

**Pressure switch settings**

Maximum HP switch setting	43.7	bar(g)
Minimum LP switch setting	1.5	bar(g)
LP pump down setting	1.5	bar(g)

**Sound power data**

Sound power level		dB(A)
With accoustic hood		dB(A)

Tolerance according EN12900

Danfoss can accept no responsibility for possible errors in catalogues, brochures and other printed material. Danfoss reserves the right to alter its products without notice. This also applies to products already on order provided that such alternations can be made without subsequential changes being necessary in specifications already agreed. All trademarks in this material are property of the respective companies. Danfoss and the Danfoss logotype are trademarks of Danfoss A/S. All rights reserved.

**Performance data at 20 Hz, ARI rating conditions**
**R410A**

Cond. temp. in °C (tc)	Evaporating temperature in °C (to)								
	-25	-15	-10	-5	0	5	10	20	25

**Cooling capacity in W**

10	-	4 867	5 854	6 897	8 006	9 187	-	-	-
20	-	4 205	5 320	6 488	7 720	9 022	10 403	-	-
30	-	3 162	4 385	5 661	6 996	8 399	9 880	-	-
40	-	-	-	-	-	-	-	-	-
45	-	-	-	-	-	-	-	-	-
50	-	-	-	-	-	-	-	-	-
60	-	-	-	-	-	-	-	-	-
65	-	-	-	-	-	-	-	-	-

**Power input in W**

10	-	787	766	701	575	371	-	-	-
20	-	963	965	954	912	823	670	-	-
30	-	1 289	1 252	1 232	1 212	1 176	1 105	-	-
40	-	-	-	-	-	-	-	-	-
45	-	-	-	-	-	-	-	-	-
50	-	-	-	-	-	-	-	-	-
60	-	-	-	-	-	-	-	-	-
65	-	-	-	-	-	-	-	-	-

**Current consumption in A**

10	-	1.31	1.02	0.69	0.34	-0.03	-	-	-
20	-	2.36	2.23	2.04	1.79	1.49	1.15	-	-
30	-	2.97	3.05	3.03	2.92	2.72	2.45	-	-
40	-	-	-	-	-	-	-	-	-
45	-	-	-	-	-	-	-	-	-
50	-	-	-	-	-	-	-	-	-
60	-	-	-	-	-	-	-	-	-
65	-	-	-	-	-	-	-	-	-

**Mass flow in kg/h**

10	-	79	94	110	126	144	-	-	-
20	-	73	91	109	129	149	171	-	-
30	-	59	81	103	126	150	175	-	-
40	-	-	-	-	-	-	-	-	-
45	-	-	-	-	-	-	-	-	-
50	-	-	-	-	-	-	-	-	-
60	-	-	-	-	-	-	-	-	-
65	-	-	-	-	-	-	-	-	-

**Coefficient of performance (C.O.P.)**

10	-	6.18	7.64	9.84	13.93	24.77	-	-	-
20	-	4.36	5.51	6.80	8.46	10.96	15.54	-	-
30	-	2.45	3.50	4.60	5.77	7.15	8.94	-	-
40	-	-	-	-	-	-	-	-	-
45	-	-	-	-	-	-	-	-	-
50	-	-	-	-	-	-	-	-	-
60	-	-	-	-	-	-	-	-	-
65	-	-	-	-	-	-	-	-	-

**Nominal performance at to = 7.2 °C, tc = 54.4 °C**

Cooling capacity	-	W
Power input	-	W
Current consumption	-	A
Mass flow	-	kg/h
C.O.P.	-	

to: Evaporating temperature at dew point

tc: Condensing temperature at dew point

Rating conditions : Superheat = 11.1 K , Subcooling = 8.3 K

**Pressure switch settings**

Maximum HP switch setting	43.7	bar(g)
Minimum LP switch setting	1.5	bar(g)
LP pump down setting	1.5	bar(g)

**Sound power data**

Sound power level		dB(A)
With accoustic hood		dB(A)

Tolerance according EN12900

Danfoss can accept no responsibility for possible errors in catalogues, brochures and other printed material. Danfoss reserves the right to alter its products without notice. This also applies to products already on order provided that such alternations can be made without subsequential changes being necessary in specifications already agreed. All trademarks in this material are property of the respective companies. Danfoss and the Danfoss logotype are trademarks of Danfoss A/S. All rights reserved.

**Performance data at 25 Hz, EN 12900 rating conditions**
**R410A**

Cond. temp. in °C (tc)	Evaporating temperature in °C (to)								
	-25	-15	-10	-5	0	5	10	20	25

**Cooling capacity in W**

10	-	5 720	6 913	8 203	9 603	11 124	-	-	-
20	-	4 984	6 276	7 661	9 150	10 755	12 487	-	-
30	-	3 866	5 226	6 675	8 223	9 882	11 663	-	-
40	-	-	-	-	-	-	-	-	-
45	-	-	-	-	-	-	-	-	-
50	-	-	-	-	-	-	-	-	-
60	-	-	-	-	-	-	-	-	-
65	-	-	-	-	-	-	-	-	-

**Power input in W**

10	-	959	919	825	656	394	-	-	-
20	-	1 200	1 197	1 173	1 107	980	772	-	-
30	-	1 577	1 547	1 528	1 501	1 446	1 343	-	-
40	-	-	-	-	-	-	-	-	-
45	-	-	-	-	-	-	-	-	-
50	-	-	-	-	-	-	-	-	-
60	-	-	-	-	-	-	-	-	-
65	-	-	-	-	-	-	-	-	-

**Current consumption in A**

10	-	1.80	1.57	1.28	0.91	0.46	-	-	-
20	-	2.72	2.63	2.47	2.24	1.92	1.51	-	-
30	-	3.43	3.47	3.44	3.33	3.14	2.86	-	-
40	-	-	-	-	-	-	-	-	-
45	-	-	-	-	-	-	-	-	-
50	-	-	-	-	-	-	-	-	-
60	-	-	-	-	-	-	-	-	-
65	-	-	-	-	-	-	-	-	-

**Mass flow in kg/h**

10	-	99	118	139	161	185	-	-	-
20	-	93	115	139	164	191	220	-	-
30	-	79	105	132	161	191	224	-	-
40	-	-	-	-	-	-	-	-	-
45	-	-	-	-	-	-	-	-	-
50	-	-	-	-	-	-	-	-	-
60	-	-	-	-	-	-	-	-	-
65	-	-	-	-	-	-	-	-	-

**Coefficient of performance (C.O.P.)**

10	-	5.97	7.52	9.94	14.63	28.27	-	-	-
20	-	4.15	5.24	6.53	8.27	10.98	16.18	-	-
30	-	2.45	3.38	4.37	5.48	6.84	8.69	-	-
40	-	-	-	-	-	-	-	-	-
45	-	-	-	-	-	-	-	-	-
50	-	-	-	-	-	-	-	-	-
60	-	-	-	-	-	-	-	-	-
65	-	-	-	-	-	-	-	-	-

**Nominal performance at to = 5 °C, tc = 50 °C**

Cooling capacity	-	W
Power input	-	W
Current consumption	-	A
Mass flow	-	kg/h
C.O.P.	-	

to: Evaporating temperature at dew point

tc: Condensing temperature at dew point

Rating conditions : Superheat = 10 K , Subcooling = 0 K

**Pressure switch settings**

Maximum HP switch setting	43.7	bar(g)
Minimum LP switch setting	1.5	bar(g)
LP pump down setting	1.5	bar(g)

**Sound power data**

Sound power level		dB(A)
With accoustic hood		dB(A)

Tolerance according EN12900

Danfoss can accept no responsibility for possible errors in catalogues, brochures and other printed material. Danfoss reserves the right to alter its products without notice. This also applies to products already on order provided that such alternations can be made without subsequential changes being necessary in specifications already agreed. All trademarks in this material are property of the respective companies. Danfoss and the Danfoss logotype are trademarks of Danfoss A/S. All rights reserved.

**Performance data at 25 Hz, ARI rating conditions**
**R410A**

Cond. temp. in °C (tc)	Evaporating temperature in °C (to)								
	-25	-15	-10	-5	0	5	10	20	25

**Cooling capacity in W**

10	-	6 058	7 317	8 678	10 152	11 752	-	-	-
20	-	5 319	6 692	8 163	9 743	11 444	13 278	-	-
30	-	4 167	5 627	7 180	8 838	10 612	12 515	-	-
40	-	-	-	-	-	-	-	-	-
45	-	-	-	-	-	-	-	-	-
50	-	-	-	-	-	-	-	-	-
60	-	-	-	-	-	-	-	-	-
65	-	-	-	-	-	-	-	-	-

**Power input in W**

10	-	959	919	825	656	394	-	-	-
20	-	1 200	1 197	1 173	1 107	980	772	-	-
30	-	1 577	1 547	1 528	1 501	1 446	1 343	-	-
40	-	-	-	-	-	-	-	-	-
45	-	-	-	-	-	-	-	-	-
50	-	-	-	-	-	-	-	-	-
60	-	-	-	-	-	-	-	-	-
65	-	-	-	-	-	-	-	-	-

**Current consumption in A**

10	-	1.80	1.57	1.28	0.91	0.46	-	-	-
20	-	2.72	2.63	2.47	2.24	1.92	1.51	-	-
30	-	3.43	3.47	3.44	3.33	3.14	2.86	-	-
40	-	-	-	-	-	-	-	-	-
45	-	-	-	-	-	-	-	-	-
50	-	-	-	-	-	-	-	-	-
60	-	-	-	-	-	-	-	-	-
65	-	-	-	-	-	-	-	-	-

**Mass flow in kg/h**

10	-	98	118	138	160	184	-	-	-
20	-	92	114	138	163	189	218	-	-
30	-	78	104	131	160	190	222	-	-
40	-	-	-	-	-	-	-	-	-
45	-	-	-	-	-	-	-	-	-
50	-	-	-	-	-	-	-	-	-
60	-	-	-	-	-	-	-	-	-
65	-	-	-	-	-	-	-	-	-

**Coefficient of performance (C.O.P.)**

10	-	6.32	7.96	10.52	15.47	29.87	-	-	-
20	-	4.43	5.59	6.96	8.80	11.68	17.21	-	-
30	-	2.64	3.64	4.70	5.89	7.34	9.32	-	-
40	-	-	-	-	-	-	-	-	-
45	-	-	-	-	-	-	-	-	-
50	-	-	-	-	-	-	-	-	-
60	-	-	-	-	-	-	-	-	-
65	-	-	-	-	-	-	-	-	-

**Nominal performance at to = 7.2 °C, tc = 54.4 °C**

Cooling capacity	-	W
Power input	-	W
Current consumption	-	A
Mass flow	-	kg/h
C.O.P.	-	

to: Evaporating temperature at dew point

tc: Condensing temperature at dew point

Rating conditions : Superheat = 11.1 K , Subcooling = 8.3 K

**Pressure switch settings**

Maximum HP switch setting	43.7	bar(g)
Minimum LP switch setting	1.5	bar(g)
LP pump down setting	1.5	bar(g)

**Sound power data**

Sound power level	dB(A)
With accoustic hood	dB(A)

Tolerance according EN12900

Danfoss can accept no responsibility for possible errors in catalogues, brochures and other printed material. Danfoss reserves the right to alter its products without notice. This also applies to products already on order provided that such alternations can be made without subsequential changes being necessary in specifications already agreed. All trademarks in this material are property of the respective companies. Danfoss and the Danfoss logotype are trademarks of Danfoss A/S. All rights reserved.



**Performance data at 30 Hz, EN 12900 rating conditions**
**R410A**

Cond. temp. in °C (tc)	Evaporating temperature in °C (to)								
	-25	-15	-10	-5	0	5	10	20	25

**Cooling capacity in W**

10	4 306	6 839	8 288	9 878	11 624	13 540	-	-	-
20	3 301	6 024	7 558	9 225	11 041	13 021	15 179	-	-
30	-	4 799	6 378	8 085	9 932	11 936	14 111	-	-
40	-	3 248	4 832	6 536	8 375	10 362	12 511	-	-
45	-	-	3 949	5 635	7 453	9 414	11 535	-	-
50	-	-	-	4 665	6 448	8 373	10 451	-	-
60	-	-	-	-	-	-	-	-	-
65	-	-	-	-	-	-	-	-	-

**Power input in W**

10	1 145	1 140	1 084	963	754	436	-	-	-
20	1 461	1 445	1 438	1 402	1 314	1 152	893	-	-
30	-	1 874	1 851	1 833	1 800	1 728	1 596	-	-
40	-	2 592	2 485	2 421	2 377	2 330	2 258	-	-
45	-	-	2 938	2 826	2 752	2 693	2 627	-	-
50	-	-	-	3 332	3 211	3 124	3 047	-	-
60	-	-	-	-	-	-	-	-	-
65	-	-	-	-	-	-	-	-	-

**Current consumption in A**

10	2.37	2.28	2.12	1.85	1.47	0.94	-	-	-
20	3.02	3.09	3.04	2.91	2.69	2.35	1.90	-	-
30	-	3.89	3.91	3.87	3.77	3.58	3.29	-	-
40	-	4.86	4.90	4.91	4.88	4.79	4.62	-	-
45	-	-	5.49	5.51	5.50	5.44	5.32	-	-
50	-	-	-	6.19	6.19	6.15	6.07	-	-
60	-	-	-	-	-	-	-	-	-
65	-	-	-	-	-	-	-	-	-

**Mass flow in kg/h**

10	76	118	142	167	194	224	-	-	-
20	63	112	138	167	198	231	267	-	-
30	-	98	128	160	194	231	271	-	-
40	-	73	108	144	182	223	267	-	-
45	-	-	93	132	172	215	261	-	-
50	-	-	-	116	159	204	252	-	-
60	-	-	-	-	-	-	-	-	-
65	-	-	-	-	-	-	-	-	-

**Coefficient of performance (C.O.P.)**

10	3.76	6.00	7.65	10.26	15.41	31.06	-	-	-
20	2.26	4.17	5.25	6.58	8.40	11.31	17.00	-	-
30	-	2.56	3.45	4.41	5.52	6.91	8.84	-	-
40	-	1.25	1.94	2.70	3.52	4.45	5.54	-	-
45	-	-	1.34	1.99	2.71	3.50	4.39	-	-
50	-	-	-	1.40	2.01	2.68	3.43	-	-
60	-	-	-	-	-	-	-	-	-
65	-	-	-	-	-	-	-	-	-

**Nominal performance at to = 5 °C, tc = 50 °C**

Cooling capacity	8 373	W
Power input	3 124	W
Current consumption	6.15	A
Mass flow	204	kg/h
C.O.P.	2.68	

**Pressure switch settings**

Maximum HP switch setting	43.7	bar(g)
Minimum LP switch setting	1.5	bar(g)
LP pump down setting	1.5	bar(g)

**Sound power data**

Sound power level		dB(A)
With accoustic hood		dB(A)

to: Evaporating temperature at dew point

tc: Condensing temperature at dew point

Rating conditions : Superheat = 10 K , Subcooling = 0 K

Tolerance according EN12900

Danfoss can accept no responsibility for possible errors in catalogues, brochures and other printed material. Danfoss reserves the right to alter its products without notice. This also applies to products already on order provided that such alternations can be made without subsequential changes being necessary in specifications already agreed. All trademarks in this material are property of the respective companies. Danfoss and the Danfoss logotype are trademarks of Danfoss A/S. All rights reserved.

**Performance data at 30 Hz, ARI rating conditions**
**R410A**

Cond. temp. in °C (tc)	Evaporating temperature in °C (to)								
	-25	-15	-10	-5	0	5	10	20	25

**Cooling capacity in W**

10	4 567	7 244	8 773	10 449	12 288	14 306	-	-	-
20	3 528	6 429	8 059	9 830	11 756	13 855	16 140	-	-
30	-	5 172	6 868	8 697	10 675	12 818	15 142	-	-
40	-	3 548	5 273	7 125	9 119	11 270	13 596	-	-
45	-	-	4 348	6 197	8 185	10 328	12 641	-	-
50	-	-	-	5 188	7 161	9 286	11 577	-	-
60	-	-	-	-	-	-	-	-	-
65	-	-	-	-	-	-	-	-	-

**Power input in W**

10	1 145	1 140	1 084	963	754	436	-	-	-
20	1 461	1 445	1 438	1 402	1 314	1 152	893	-	-
30	-	1 874	1 851	1 833	1 800	1 728	1 596	-	-
40	-	2 592	2 485	2 421	2 377	2 330	2 258	-	-
45	-	-	2 938	2 826	2 752	2 693	2 627	-	-
50	-	-	-	3 332	3 211	3 124	3 047	-	-
60	-	-	-	-	-	-	-	-	-
65	-	-	-	-	-	-	-	-	-

**Current consumption in A**

10	2.37	2.28	2.12	1.85	1.47	0.94	-	-	-
20	3.02	3.09	3.04	2.91	2.69	2.35	1.90	-	-
30	-	3.89	3.91	3.87	3.77	3.58	3.29	-	-
40	-	4.86	4.90	4.91	4.88	4.79	4.62	-	-
45	-	-	5.49	5.51	5.50	5.44	5.32	-	-
50	-	-	-	6.19	6.19	6.15	6.07	-	-
60	-	-	-	-	-	-	-	-	-
65	-	-	-	-	-	-	-	-	-

**Mass flow in kg/h**

10	75	117	141	166	193	223	-	-	-
20	62	111	138	166	196	229	265	-	-
30	-	97	127	159	193	230	269	-	-
40	-	73	107	143	181	221	265	-	-
45	-	-	93	131	171	213	259	-	-
50	-	-	-	116	158	203	250	-	-
60	-	-	-	-	-	-	-	-	-
65	-	-	-	-	-	-	-	-	-

**Coefficient of performance (C.O.P.)**

10	3.99	6.36	8.09	10.85	16.29	32.81	-	-	-
20	2.42	4.45	5.60	7.01	8.95	12.03	18.07	-	-
30	-	2.76	3.71	4.74	5.93	7.42	9.49	-	-
40	-	1.37	2.12	2.94	3.84	4.84	6.02	-	-
45	-	-	1.48	2.19	2.97	3.84	4.81	-	-
50	-	-	-	1.56	2.23	2.97	3.80	-	-
60	-	-	-	-	-	-	-	-	-
65	-	-	-	-	-	-	-	-	-

**Nominal performance at to = 7.2 °C, tc = 54.4 °C**

Cooling capacity	-	W
Power input	-	W
Current consumption	-	A
Mass flow	-	kg/h
C.O.P.	-	

to: Evaporating temperature at dew point

tc: Condensing temperature at dew point

Rating conditions : Superheat = 11.1 K , Subcooling = 8.3 K

**Pressure switch settings**

Maximum HP switch setting	43.7	bar(g)
Minimum LP switch setting	1.5	bar(g)
LP pump down setting	1.5	bar(g)

**Sound power data**

Sound power level		dB(A)
With accoustic hood		dB(A)

Tolerance according EN12900

Danfoss can accept no responsibility for possible errors in catalogues, brochures and other printed material. Danfoss reserves the right to alter its products without notice. This also applies to products already on order provided that such alternations can be made without subsequential changes being necessary in specifications already agreed. All trademarks in this material are property of the respective companies. Danfoss and the Danfoss logotype are trademarks of Danfoss A/S. All rights reserved.

**Performance data at 35 Hz, EN 12900 rating conditions**
**R410A**

Cond. temp. in °C (tc)	Evaporating temperature in °C (to)								
	-25	-15	-10	-5	0	5	10	20	25

**Cooling capacity in W**

10	5 027	7 953	9 656	11 544	13 634	15 947	-	-	-
20	3 966	7 061	8 834	10 782	12 924	15 277	17 860	-	-
30	-	5 733	7 530	9 492	11 637	13 984	16 551	-	-
40	-	4 061	5 834	7 762	9 863	12 155	14 657	-	-
45	-	-	4 869	6 761	8 821	11 066	13 515	-	-
50	-	-	-	5 685	7 689	9 874	12 256	-	-
60	-	-	-	-	-	-	-	-	-
65	-	-	-	-	-	-	-	-	-

**Power input in W**

10	1 346	1 330	1 260	1 114	868	498	-	-	-
20	1 709	1 699	1 688	1 642	1 534	1 339	1 034	-	-
30	-	2 180	2 162	2 146	2 108	2 022	1 863	-	-
40	-	2 939	2 847	2 794	2 758	2 712	2 633	-	-
45	-	-	3 320	3 224	3 163	3 113	3 047	-	-
50	-	-	-	3 752	3 650	3 577	3 509	-	-
60	-	-	-	-	-	-	-	-	-
65	-	-	-	-	-	-	-	-	-

**Current consumption in A**

10	2.71	2.77	2.66	2.41	2.01	1.42	-	-	-
20	3.39	3.48	3.46	3.36	3.15	2.80	2.29	-	-
30	-	4.37	4.36	4.32	4.22	4.04	3.74	-	-
40	-	5.61	5.53	5.48	5.41	5.31	5.14	-	-
45	-	-	6.27	6.18	6.09	6.00	5.87	-	-
50	-	-	-	6.99	6.87	6.77	6.66	-	-
60	-	-	-	-	-	-	-	-	-
65	-	-	-	-	-	-	-	-	-

**Mass flow in kg/h**

10	88	137	165	195	228	264	-	-	-
20	75	131	162	195	231	271	315	-	-
30	-	116	151	188	228	271	318	-	-
40	-	92	130	171	214	261	312	-	-
45	-	-	115	158	203	252	305	-	-
50	-	-	-	142	189	240	295	-	-
60	-	-	-	-	-	-	-	-	-
65	-	-	-	-	-	-	-	-	-

**Coefficient of performance (C.O.P.)**

10	3.74	5.98	7.67	10.36	15.70	32.01	-	-	-
20	2.32	4.16	5.23	6.57	8.43	11.41	17.27	-	-
30	-	2.63	3.48	4.42	5.52	6.92	8.88	-	-
40	-	1.38	2.05	2.78	3.58	4.48	5.57	-	-
45	-	-	1.47	2.10	2.79	3.56	4.44	-	-
50	-	-	-	1.52	2.11	2.76	3.49	-	-
60	-	-	-	-	-	-	-	-	-
65	-	-	-	-	-	-	-	-	-

**Nominal performance at to = 5 °C, tc = 50 °C**

Cooling capacity	9 874	W
Power input	3 577	W
Current consumption	6.77	A
Mass flow	240	kg/h
C.O.P.	2.76	

**Pressure switch settings**

Maximum HP switch setting	43.7	bar(g)
Minimum LP switch setting	1.5	bar(g)
LP pump down setting	1.5	bar(g)

**Sound power data**

Sound power level		dB(A)
With accoustic hood		dB(A)

to: Evaporating temperature at dew point

tc: Condensing temperature at dew point

Rating conditions : Superheat = 10 K , Subcooling = 0 K

Tolerance according EN12900

Danfoss can accept no responsibility for possible errors in catalogues, brochures and other printed material. Danfoss reserves the right to alter its products without notice. This also applies to products already on order provided that such alternations can be made without subsequential changes being necessary in specifications already agreed. All trademarks in this material are property of the respective companies. Danfoss and the Danfoss logotype are trademarks of Danfoss A/S. All rights reserved.

**Performance data at 35 Hz, ARI rating conditions**
**R410A**

Cond. temp. in °C (tc)	Evaporating temperature in °C (to)								
	-25	-15	-10	-5	0	5	10	20	25

**Cooling capacity in W**

10	5 332	8 424	10 221	12 211	14 414	16 848	-	-	-
20	4 240	7 535	9 420	11 489	13 760	16 254	18 990	-	-
30	-	6 178	8 107	10 210	12 508	15 018	17 760	-	-
40	-	4 437	6 366	8 460	10 739	13 222	15 927	-	-
45	-	-	5 361	7 435	9 688	12 140	14 811	-	-
50	-	-	-	6 322	8 539	10 950	13 576	-	-
60	-	-	-	-	-	-	-	-	-
65	-	-	-	-	-	-	-	-	-

**Power input in W**

10	1 346	1 330	1 260	1 114	868	498	-	-	-
20	1 709	1 699	1 688	1 642	1 534	1 339	1 034	-	-
30	-	2 180	2 162	2 146	2 108	2 022	1 863	-	-
40	-	2 939	2 847	2 794	2 758	2 712	2 633	-	-
45	-	-	3 320	3 224	3 163	3 113	3 047	-	-
50	-	-	-	3 752	3 650	3 577	3 509	-	-
60	-	-	-	-	-	-	-	-	-
65	-	-	-	-	-	-	-	-	-

**Current consumption in A**

10	2.71	2.77	2.66	2.41	2.01	1.42	-	-	-
20	3.39	3.48	3.46	3.36	3.15	2.80	2.29	-	-
30	-	4.37	4.36	4.32	4.22	4.04	3.74	-	-
40	-	5.61	5.53	5.48	5.41	5.31	5.14	-	-
45	-	-	6.27	6.18	6.09	6.00	5.87	-	-
50	-	-	-	6.99	6.87	6.77	6.66	-	-
60	-	-	-	-	-	-	-	-	-
65	-	-	-	-	-	-	-	-	-

**Mass flow in kg/h**

10	88	137	164	193	226	262	-	-	-
20	75	130	161	194	230	269	312	-	-
30	-	116	150	187	226	269	316	-	-
40	-	91	129	169	213	259	310	-	-
45	-	-	114	157	202	251	303	-	-
50	-	-	-	141	188	239	293	-	-
60	-	-	-	-	-	-	-	-	-
65	-	-	-	-	-	-	-	-	-

**Coefficient of performance (C.O.P.)**

10	3.96	6.33	8.11	10.96	16.60	33.81	-	-	-
20	2.48	4.44	5.58	7.00	8.97	12.14	18.36	-	-
30	-	2.83	3.75	4.76	5.93	7.43	9.53	-	-
40	-	1.51	2.24	3.03	3.89	4.87	6.05	-	-
45	-	-	1.61	2.31	3.06	3.90	4.86	-	-
50	-	-	-	1.68	2.34	3.06	3.87	-	-
60	-	-	-	-	-	-	-	-	-
65	-	-	-	-	-	-	-	-	-

**Nominal performance at to = 7.2 °C, tc = 54.4 °C**

Cooling capacity	-	W
Power input	-	W
Current consumption	-	A
Mass flow	-	kg/h
C.O.P.	-	

to: Evaporating temperature at dew point

tc: Condensing temperature at dew point

Rating conditions : Superheat = 11.1 K , Subcooling = 8.3 K

**Pressure switch settings**

Maximum HP switch setting	43.7	bar(g)
Minimum LP switch setting	1.5	bar(g)
LP pump down setting	1.5	bar(g)

**Sound power data**

Sound power level	dB(A)
With accoustic hood	dB(A)

Tolerance according EN12900

Danfoss can accept no responsibility for possible errors in catalogues, brochures and other printed material. Danfoss reserves the right to alter its products without notice. This also applies to products already on order provided that such alternations can be made without subsequential changes being necessary in specifications already agreed. All trademarks in this material are property of the respective companies. Danfoss and the Danfoss logotype are trademarks of Danfoss A/S. All rights reserved.

# Datasheet, performance data

# Danfoss scroll compressor. VZH065CG

## Performance data at 40 Hz, EN 12900 rating conditions

## R410A

Cond. temp. in °C (tc)	Evaporating temperature in °C (to)								
	-25	-15	-10	-5	0	5	10	20	25

### Cooling capacity in W

10	5 746	9 062	11 017	13 201	15 635	18 342	-	-	-
20	4 632	8 094	10 105	12 332	14 797	17 521	20 528	-	-
30	3 163	6 667	8 680	10 896	13 338	16 026	18 984	25 794	-
40	-	4 879	6 840	8 991	11 354	13 951	16 803	23 359	27 106
45	-	3 884	5 797	7 893	10 195	12 724	15 500	21 884	25 533
50	-	-	4 690	6 716	8 941	11 385	14 070	20 246	23 780
60	-	-	-	-	6 187	8 402	10 841	16 472	19 704
65	-	-	-	-	-	6 757	9 023	14 275	-

### Power input in W

10	1 554	1 531	1 447	1 279	999	580	-	-	-
20	1 965	1 960	1 948	1 892	1 766	1 543	1 195	-	-
30	2 620	2 493	2 481	2 468	2 426	2 328	2 146	1 423	-
40	-	3 298	3 217	3 176	3 148	3 104	3 018	2 612	2 236
45	-	3 855	3 714	3 632	3 584	3 542	3 478	3 177	2 885
50	-	-	4 324	4 185	4 099	4 041	3 981	3 750	3 524
60	-	-	-	-	5 450	5 306	5 202	5 007	4 861
65	-	-	-	-	-	6 115	5 962	5 732	-

### Current consumption in A

10	3.09	3.26	3.19	2.96	2.54	1.89	-	-	-
20	3.78	3.89	3.89	3.81	3.61	3.26	2.70	-	-
30	5.04	4.86	4.83	4.79	4.69	4.52	4.22	3.10	-
40	-	6.35	6.17	6.05	5.95	5.84	5.68	5.06	4.53
45	-	7.34	7.04	6.84	6.70	6.58	6.45	6.00	5.60
50	-	-	8.08	7.77	7.56	7.41	7.27	6.93	6.64
60	-	-	-	-	9.69	9.38	9.16	8.87	8.71
65	-	-	-	-	-	10.57	10.27	9.92	-

### Mass flow in kg/h

10	101	156	188	222	261	303	-	-	-
20	88	150	185	223	265	311	362	-	-
30	66	135	174	216	261	311	365	489	-
40	-	110	152	197	247	300	358	490	565
45	-	93	137	184	235	290	350	486	563
50	-	-	118	167	220	277	339	478	557
60	-	-	-	-	180	241	306	454	537
65	-	-	-	-	-	217	284	436	-

### Coefficient of performance (C.O.P.)

10	3.70	5.92	7.62	10.32	15.65	31.61	-	-	-
20	2.36	4.13	5.19	6.52	8.38	11.36	17.18	-	-
30	1.21	2.67	3.50	4.41	5.50	6.88	8.85	18.13	-
40	-	1.48	2.13	2.83	3.61	4.49	5.57	8.94	12.12
45	-	1.01	1.56	2.17	2.84	3.59	4.46	6.89	8.85
50	-	-	1.08	1.60	2.18	2.82	3.53	5.40	6.75
60	-	-	-	-	1.14	1.58	2.08	3.29	4.05
65	-	-	-	-	-	1.10	1.51	2.49	-

### Nominal performance at to = 5 °C, tc = 50 °C

Cooling capacity	11 385	W
Power input	4 041	W
Current consumption	7.41	A
Mass flow	277	kg/h
C.O.P.	2.82	

### Pressure switch settings

Maximum HP switch setting	43.7	bar(g)
Minimum LP switch setting	1.5	bar(g)
LP pump down setting	1.5	bar(g)

### Sound power data

Sound power level		dB(A)
With accoustic hood		dB(A)

to: Evaporating temperature at dew point

tc: Condensing temperature at dew point

Rating conditions : Superheat = 10 K , Subcooling = 0 K

Tolerance according EN12900

Danfoss can accept no responsibility for possible errors in catalogues, brochures and other printed material. Danfoss reserves the right to alter its products without notice. This also applies to products already on order provided that such alternations can be made without subsequential changes being necessary in specifications already agreed. All trademarks in this material are property of the respective companies. Danfoss and the Danfoss logotype are trademarks of Danfoss A/S. All rights reserved.

# Datasheet, performance data

# Danfoss scroll compressor. VZH065CG

## Performance data at 40 Hz, ARI rating conditions

## R410A

Cond. temp. in °C (tc)	Evaporating temperature in °C (to)								
	-25	-15	-10	-5	0	5	10	20	25

### Cooling capacity in W

10	6 095	9 598	11 662	13 964	16 529	19 379	-	-	-
20	4 951	8 638	10 776	13 140	15 755	18 643	21 828	-	-
30	3 416	7 185	9 345	11 721	14 335	17 211	20 371	27 639	-
40	-	5 331	7 464	9 800	12 362	15 174	18 259	25 341	29 383
45	-	4 283	6 383	8 680	11 197	13 959	16 987	23 937	27 905
50	-	-	5 224	7 469	9 929	12 627	15 585	22 378	26 259
60	-	-	-	-	7 127	9 660	12 441	18 844	22 512
65	-	-	-	-	-	8 048	10 722	16 891	-

### Power input in W

10	1 554	1 531	1 447	1 279	999	580	-	-	-
20	1 965	1 960	1 948	1 892	1 766	1 543	1 195	-	-
30	2 620	2 493	2 481	2 468	2 426	2 328	2 146	1 423	-
40	-	3 298	3 217	3 176	3 148	3 104	3 018	2 612	2 236
45	-	3 855	3 714	3 632	3 584	3 542	3 478	3 177	2 885
50	-	-	4 324	4 185	4 099	4 041	3 981	3 750	3 524
60	-	-	-	-	5 450	5 306	5 202	5 007	4 861
65	-	-	-	-	-	6 115	5 962	5 732	-

### Current consumption in A

10	3.09	3.26	3.19	2.96	2.54	1.89	-	-	-
20	3.78	3.89	3.89	3.81	3.61	3.26	2.70	-	-
30	5.04	4.86	4.83	4.79	4.69	4.52	4.22	3.10	-
40	-	6.35	6.17	6.05	5.95	5.84	5.68	5.06	4.53
45	-	7.34	7.04	6.84	6.70	6.58	6.45	6.00	5.60
50	-	-	8.08	7.77	7.56	7.41	7.27	6.93	6.64
60	-	-	-	-	9.69	9.38	9.16	8.87	8.71
65	-	-	-	-	-	10.57	10.27	9.92	-

### Mass flow in kg/h

10	101	155	187	221	259	301	-	-	-
20	88	149	184	222	263	309	359	-	-
30	66	135	173	214	259	308	362	486	-
40	-	109	151	196	245	298	355	486	560
45	-	92	136	183	233	288	347	482	558
50	-	-	118	166	219	275	336	475	553
60	-	-	-	-	179	239	304	450	532
65	-	-	-	-	-	215	282	432	-

### Coefficient of performance (C.O.P.)

10	3.92	6.27	8.06	10.92	16.55	33.39	-	-	-
20	2.52	4.41	5.53	6.95	8.92	12.08	18.27	-	-
30	1.30	2.88	3.77	4.75	5.91	7.39	9.49	19.43	-
40	-	1.62	2.32	3.09	3.93	4.89	6.05	9.70	13.14
45	-	1.11	1.72	2.39	3.12	3.94	4.88	7.54	9.67
50	-	-	1.21	1.78	2.42	3.12	3.92	5.97	7.45
60	-	-	-	-	1.31	1.82	2.39	3.76	4.63
65	-	-	-	-	-	1.32	1.80	2.95	-

### Nominal performance at to = 7.2 °C, tc = 54.4 °C

Cooling capacity	12 605	W
Power input	4 515	W
Current consumption	8.14	A
Mass flow	288	kg/h
C.O.P.	2.79	

### Pressure switch settings

Maximum HP switch setting	43.7	bar(g)
Minimum LP switch setting	1.5	bar(g)
LP pump down setting	1.5	bar(g)

### Sound power data

Sound power level		dB(A)
With accoustic hood		dB(A)

to: Evaporating temperature at dew point

tc: Condensing temperature at dew point

Rating conditions : Superheat = 11.1 K , Subcooling = 8.3 K

Tolerance according EN12900

Danfoss can accept no responsibility for possible errors in catalogues, brochures and other printed material. Danfoss reserves the right to alter its products without notice. This also applies to products already on order provided that such alternations can be made without subsequential changes being necessary in specifications already agreed. All trademarks in this material are property of the respective companies. Danfoss and the Danfoss logotype are trademarks of Danfoss A/S. All rights reserved.

**Performance data at 45 Hz, EN 12900 rating conditions**
**R410A**

Cond. temp. in °C (tc)	Evaporating temperature in °C (to)								
	-25	-15	-10	-5	0	5	10	20	25

**Cooling capacity in W**

10	6 463	10 165	12 371	14 850	17 626	20 726	-	-	-
20	5 297	9 124	11 371	13 875	16 661	19 756	23 185	-	-
30	3 767	7 601	9 829	12 298	15 034	18 062	21 409	29 162	-
40	-	5 703	7 851	10 223	12 847	15 747	18 949	26 358	30 617
45	-	4 649	6 732	9 033	11 576	14 387	17 491	24 678	28 811
50	-	-	5 547	7 758	10 203	12 906	15 894	22 820	26 808
60	-	-	-	-	7 192	9 615	12 302	18 561	22 180
65	-	-	-	-	-	7 797	10 280	16 088	-

**Power input in W**

10	1 771	1 741	1 645	1 457	1 146	682	-	-	-
20	2 230	2 230	2 216	2 153	2 011	1 762	1 375	-	-
30	2 930	2 814	2 809	2 799	2 754	2 646	2 443	1 640	-
40	-	3 667	3 597	3 566	3 546	3 505	3 416	2 969	2 552
45	-	4 248	4 118	4 050	4 014	3 980	3 919	3 596	3 275
50	-	-	4 752	4 629	4 559	4 514	4 463	4 227	3 983
60	-	-	-	-	5 966	5 843	5 758	5 588	5 442
65	-	-	-	-	-	6 681	6 553	6 360	-

**Current consumption in A**

10	3.48	3.74	3.71	3.49	3.05	2.35	-	-	-
20	4.20	4.31	4.34	4.28	4.09	3.72	3.13	-	-
30	5.68	5.37	5.31	5.27	5.18	5.01	4.71	3.53	-
40	-	7.08	6.81	6.63	6.51	6.40	6.25	5.64	5.09
45	-	8.23	7.80	7.51	7.32	7.19	7.06	6.63	6.24
50	-	-	8.99	8.56	8.26	8.06	7.92	7.60	7.34
60	-	-	-	-	10.60	10.18	9.90	9.60	9.48
65	-	-	-	-	-	11.46	11.07	10.66	-

**Mass flow in kg/h**

10	114	175	211	250	294	342	-	-	-
20	101	169	208	251	299	351	409	-	-
30	79	154	197	243	294	350	412	553	-
40	-	129	175	224	279	338	403	553	638
45	-	111	159	210	267	328	395	548	635
50	-	-	140	193	251	314	383	539	628
60	-	-	-	-	209	275	347	511	604
65	-	-	-	-	-	250	324	491	-

**Coefficient of performance (C.O.P.)**

10	3.65	5.84	7.52	10.19	15.39	30.38	-	-	-
20	2.38	4.09	5.13	6.45	8.28	11.21	16.87	-	-
30	1.29	2.70	3.50	4.39	5.46	6.83	8.76	17.79	-
40	-	1.56	2.18	2.87	3.62	4.49	5.55	8.88	12.00
45	-	1.09	1.63	2.23	2.88	3.61	4.46	6.86	8.80
50	-	-	1.17	1.68	2.24	2.86	3.56	5.40	6.73
60	-	-	-	-	1.21	1.65	2.14	3.32	4.08
65	-	-	-	-	-	1.17	1.57	2.53	-

**Nominal performance at to = 5 °C, tc = 50 °C**

Cooling capacity	12 906	W
Power input	4 514	W
Current consumption	8.06	A
Mass flow	314	kg/h
C.O.P.	2.86	

**Pressure switch settings**

Maximum HP switch setting	43.7	bar(g)
Minimum LP switch setting	1.5	bar(g)
LP pump down setting	1.5	bar(g)

**Sound power data**

Sound power level		dB(A)
With acoustic hood		dB(A)

to: Evaporating temperature at dew point

tc: Condensing temperature at dew point

Rating conditions : Superheat = 10 K , Subcooling = 0 K

Tolerance according EN12900

Danfoss can accept no responsibility for possible errors in catalogues, brochures and other printed material. Danfoss reserves the right to alter its products without notice. This also applies to products already on order provided that such alternations can be made without subsequential changes being necessary in specifications already agreed. All trademarks in this material are property of the respective companies. Danfoss and the Danfoss logotype are trademarks of Danfoss A/S. All rights reserved.

**Performance data at 45 Hz, ARI rating conditions**
**R410A**

Cond. temp. in °C (tc)	Evaporating temperature in °C (to)								
	-25	-15	-10	-5	0	5	10	20	25

**Cooling capacity in W**

10	6 856	10 767	13 095	15 708	18 633	21 898	-	-	-
20	5 662	9 737	12 125	14 784	17 740	21 020	24 653	-	-
30	4 068	8 192	10 582	13 229	16 158	19 397	22 974	31 248	-
40	-	6 231	8 567	11 143	13 988	17 128	20 591	28 595	33 189
45	-	5 127	7 413	9 933	12 714	15 783	19 168	26 992	31 487
50	-	-	6 178	8 627	11 330	14 314	17 606	25 223	29 603
60	-	-	-	-	8 284	11 054	14 117	21 233	25 340
65	-	-	-	-	-	9 288	12 215	19 037	-

**Power input in W**

10	1 771	1 741	1 645	1 457	1 146	682	-	-	-
20	2 230	2 230	2 216	2 153	2 011	1 762	1 375	-	-
30	2 930	2 814	2 809	2 799	2 754	2 646	2 443	1 640	-
40	-	3 667	3 597	3 566	3 546	3 505	3 416	2 969	2 552
45	-	4 248	4 118	4 050	4 014	3 980	3 919	3 596	3 275
50	-	-	4 752	4 629	4 559	4 514	4 463	4 227	3 983
60	-	-	-	-	5 966	5 843	5 758	5 588	5 442
65	-	-	-	-	-	6 681	6 553	6 360	-

**Current consumption in A**

10	3.48	3.74	3.71	3.49	3.05	2.35	-	-	-
20	4.20	4.31	4.34	4.28	4.09	3.72	3.13	-	-
30	5.68	5.37	5.31	5.27	5.18	5.01	4.71	3.53	-
40	-	7.08	6.81	6.63	6.51	6.40	6.25	5.64	5.09
45	-	8.23	7.80	7.51	7.32	7.19	7.06	6.63	6.24
50	-	-	8.99	8.56	8.26	8.06	7.92	7.60	7.34
60	-	-	-	-	10.60	10.18	9.90	9.60	9.48
65	-	-	-	-	-	11.46	11.07	10.66	-

**Mass flow in kg/h**

10	113	174	209	248	292	340	-	-	-
20	100	168	207	250	297	348	406	-	-
30	78	153	196	242	292	348	409	549	-
40	-	128	173	223	277	336	400	548	633
45	-	111	158	209	265	326	392	543	629
50	-	-	139	192	249	312	380	535	623
60	-	-	-	-	208	274	345	507	599
65	-	-	-	-	-	249	322	487	-

**Coefficient of performance (C.O.P.)**

10	3.87	6.19	7.96	10.78	16.27	32.10	-	-	-
20	2.54	4.37	5.47	6.87	8.82	11.93	17.93	-	-
30	1.39	2.91	3.77	4.73	5.87	7.33	9.40	19.06	-
40	-	1.70	2.38	3.12	3.94	4.89	6.03	9.63	13.00
45	-	1.21	1.80	2.45	3.17	3.97	4.89	7.51	9.61
50	-	-	1.30	1.86	2.49	3.17	3.94	5.97	7.43
60	-	-	-	-	1.39	1.89	2.45	3.80	4.66
65	-	-	-	-	-	1.39	1.86	2.99	-

**Nominal performance at to = 7.2 °C, tc = 54.4 °C**

Cooling capacity	14 297	W
Power input	5 024	W
Current consumption	8.84	A
Mass flow	327	kg/h
C.O.P.	2.85	

to: Evaporating temperature at dew point

tc: Condensing temperature at dew point

Rating conditions : Superheat = 11.1 K , Subcooling = 8.3 K

**Pressure switch settings**

Maximum HP switch setting	43.7	bar(g)
Minimum LP switch setting	1.5	bar(g)
LP pump down setting	1.5	bar(g)

**Sound power data**

Sound power level		dB(A)
With accoustic hood		dB(A)

Tolerance according EN12900

Danfoss can accept no responsibility for possible errors in catalogues, brochures and other printed material. Danfoss reserves the right to alter its products without notice. This also applies to products already on order provided that such alternations can be made without subsequential changes being necessary in specifications already agreed. All trademarks in this material are property of the respective companies. Danfoss and the Danfoss logotype are trademarks of Danfoss A/S. All rights reserved.



**Performance data at 50 Hz, EN 12900 rating conditions**
**R410A**

Cond. temp. in °C (tc)	Evaporating temperature in °C (to)								
	-25	-15	-10	-5	0	5	10	20	25

**Cooling capacity in W**

10	7 178	11 263	13 718	16 490	19 607	23 100	-	-	-
20	5 962	10 151	12 632	15 410	18 516	21 979	25 830	-	-
30	4 374	8 536	10 977	13 697	16 725	20 092	23 827	32 521	-
40	-	6 533	8 866	11 459	14 343	17 545	21 095	29 357	34 128
45	-	5 422	7 675	10 179	12 963	16 055	19 486	27 475	32 093
50	-	-	6 414	8 810	11 475	14 438	17 728	25 404	29 847
60	-	-	-	-	8 214	10 847	13 783	20 672	24 680
65	-	-	-	-	-	8 862	11 562	17 930	-

**Power input in W**

10	1 996	1 960	1 855	1 648	1 309	804	-	-	-
20	2 503	2 507	2 493	2 424	2 269	1 997	1 574	-	-
30	3 251	3 144	3 144	3 137	3 092	2 975	2 756	1 880	-
40	-	4 047	3 986	3 965	3 953	3 916	3 824	3 344	2 892
45	-	4 654	4 534	4 478	4 453	4 428	4 371	4 031	3 685
50	-	-	5 195	5 085	5 029	4 997	4 955	4 719	4 459
60	-	-	-	-	6 497	6 393	6 327	6 182	6 039
65	-	-	-	-	-	7 265	7 158	7 002	-

**Current consumption in A**

10	3.90	4.23	4.22	4.01	3.56	2.81	-	-	-
20	4.65	4.76	4.80	4.75	4.57	4.19	3.57	-	-
30	6.32	5.88	5.81	5.76	5.68	5.52	5.22	3.99	-
40	-	7.79	7.44	7.23	7.09	6.98	6.84	6.24	5.69
45	-	9.10	8.55	8.19	7.96	7.81	7.68	7.29	6.91
50	-	-	9.88	9.33	8.97	8.74	8.59	8.31	8.07
60	-	-	-	-	11.51	11.00	10.67	10.37	10.28
65	-	-	-	-	-	12.37	11.90	11.46	-

**Mass flow in kg/h**

10	126	194	234	278	327	381	-	-	-
20	113	188	232	279	332	390	455	-	-
30	91	173	220	271	327	389	458	617	-
40	-	147	197	252	311	377	449	615	711
45	-	130	181	237	298	366	440	609	707
50	-	-	162	219	282	351	427	600	699
60	-	-	-	-	239	311	389	569	671
65	-	-	-	-	-	285	365	547	-

**Coefficient of performance (C.O.P.)**

10	3.60	5.75	7.40	10.00	14.98	28.74	-	-	-
20	2.38	4.05	5.07	6.36	8.16	11.01	16.41	-	-
30	1.35	2.72	3.49	4.37	5.41	6.75	8.65	17.30	-
40	-	1.61	2.22	2.89	3.63	4.48	5.52	8.78	11.80
45	-	1.17	1.69	2.27	2.91	3.63	4.46	6.82	8.71
50	-	-	1.23	1.73	2.28	2.89	3.58	5.38	6.69
60	-	-	-	-	1.26	1.70	2.18	3.34	4.09
65	-	-	-	-	-	1.22	1.62	2.56	-

**Nominal performance at to = 5 °C, tc = 50 °C**

Cooling capacity	14 438	W
Power input	4 997	W
Current consumption	8.74	A
Mass flow	351	kg/h
C.O.P.	2.89	

**Pressure switch settings**

Maximum HP switch setting	43.7	bar(g)
Minimum LP switch setting	1.5	bar(g)
LP pump down setting	1.5	bar(g)

**Sound power data**

Sound power level		dB(A)
With accoustic hood		dB(A)

to: Evaporating temperature at dew point

tc: Condensing temperature at dew point

Rating conditions : Superheat = 10 K , Subcooling = 0 K

Tolerance according EN12900

Danfoss can accept no responsibility for possible errors in catalogues, brochures and other printed material. Danfoss reserves the right to alter its products without notice. This also applies to products already on order provided that such alternations can be made without subsequential changes being necessary in specifications already agreed. All trademarks in this material are property of the respective companies. Danfoss and the Danfoss logotype are trademarks of Danfoss A/S. All rights reserved.

**Performance data at 50 Hz, ARI rating conditions**
**R410A**

Cond. temp. in °C (tc)	Evaporating temperature in °C (to)								
	-25	-15	-10	-5	0	5	10	20	25

**Cooling capacity in W**

10	7 614	11 929	14 521	17 443	20 727	24 406	-	-	-
20	6 373	10 832	13 469	16 420	19 715	23 387	27 466	-	-
30	4 724	9 200	11 819	14 734	17 976	21 577	25 569	34 848	-
40	-	7 137	9 675	12 491	15 616	19 084	22 924	31 848	36 995
45	-	5 979	8 451	11 194	14 237	17 614	21 354	30 053	35 074
50	-	-	7 144	9 798	12 743	16 013	19 637	28 079	32 959
60	-	-	-	-	9 462	12 470	15 816	23 648	28 196
65	-	-	-	-	-	10 556	13 738	21 217	-

**Power input in W**

10	1 996	1 960	1 855	1 648	1 309	804	-	-	-
20	2 503	2 507	2 493	2 424	2 269	1 997	1 574	-	-
30	3 251	3 144	3 144	3 137	3 092	2 975	2 756	1 880	-
40	-	4 047	3 986	3 965	3 953	3 916	3 824	3 344	2 892
45	-	4 654	4 534	4 478	4 453	4 428	4 371	4 031	3 685
50	-	-	5 195	5 085	5 029	4 997	4 955	4 719	4 459
60	-	-	-	-	6 497	6 393	6 327	6 182	6 039
65	-	-	-	-	-	7 265	7 158	7 002	-

**Current consumption in A**

10	3.90	4.23	4.22	4.01	3.56	2.81	-	-	-
20	4.65	4.76	4.80	4.75	4.57	4.19	3.57	-	-
30	6.32	5.88	5.81	5.76	5.68	5.52	5.22	3.99	-
40	-	7.79	7.44	7.23	7.09	6.98	6.84	6.24	5.69
45	-	9.10	8.55	8.19	7.96	7.81	7.68	7.29	6.91
50	-	-	9.88	9.33	8.97	8.74	8.59	8.31	8.07
60	-	-	-	-	11.51	11.00	10.67	10.37	10.28
65	-	-	-	-	-	12.37	11.90	11.46	-

**Mass flow in kg/h**

10	126	193	232	276	324	379	-	-	-
20	113	187	230	277	330	388	452	-	-
30	91	172	218	269	325	387	455	612	-
40	-	146	196	250	309	374	446	610	705
45	-	129	180	236	296	363	436	605	701
50	-	-	161	218	280	349	424	595	693
60	-	-	-	-	237	309	387	564	666
65	-	-	-	-	-	283	362	543	-

**Coefficient of performance (C.O.P.)**

10	3.81	6.09	7.83	10.58	15.84	30.36	-	-	-
20	2.55	4.32	5.40	6.77	8.69	11.71	17.45	-	-
30	1.45	2.93	3.76	4.70	5.81	7.25	9.28	18.54	-
40	-	1.76	2.43	3.15	3.95	4.87	5.99	9.52	12.79
45	-	1.28	1.86	2.50	3.20	3.98	4.89	7.45	9.52
50	-	-	1.38	1.93	2.53	3.20	3.96	5.95	7.39
60	-	-	-	-	1.46	1.95	2.50	3.83	4.67
65	-	-	-	-	-	1.45	1.92	3.03	-

**Nominal performance at to = 7.2 °C, tc = 54.4 °C**

Cooling capacity	16 005	W
Power input	5 543	W
Current consumption	9.56	A
Mass flow	366	kg/h
C.O.P.	2.89	

**Pressure switch settings**

Maximum HP switch setting	43.7	bar(g)
Minimum LP switch setting	1.5	bar(g)
LP pump down setting	1.5	bar(g)

**Sound power data**

Sound power level		dB(A)
With acoustic hood		dB(A)

to: Evaporating temperature at dew point

tc: Condensing temperature at dew point

Rating conditions : Superheat = 11.1 K , Subcooling = 8.3 K

Tolerance according EN12900

Danfoss can accept no responsibility for possible errors in catalogues, brochures and other printed material. Danfoss reserves the right to alter its products without notice. This also applies to products already on order provided that such alternations can be made without subsequential changes being necessary in specifications already agreed. All trademarks in this material are property of the respective companies. Danfoss and the Danfoss logotype are trademarks of Danfoss A/S. All rights reserved.

**Performance data at 55 Hz, EN 12900 rating conditions**
**R410A**

Cond. temp. in °C (tc)	Evaporating temperature in °C (to)								
	-25	-15	-10	-5	0	5	10	20	25

**Cooling capacity in W**

10	7 890	12 355	15 058	18 121	21 577	25 462	-	-	-
20	6 626	11 174	13 887	16 938	20 362	24 193	28 464	-	-
30	4 984	9 472	12 124	15 093	18 412	22 116	26 238	35 872	-
40	-	7 368	9 886	12 699	15 841	19 343	23 241	32 355	37 637
45	-	6 203	8 626	11 333	14 356	17 730	21 485	30 277	35 380
50	-	-	7 292	9 873	12 758	15 980	19 572	27 998	32 896
60	-	-	-	-	9 255	12 099	15 284	22 805	27 203
65	-	-	-	-	-	9 949	12 869	19 801	-

**Power input in W**

10	2 230	2 190	2 076	1 853	1 488	945	-	-	-
20	2 784	2 793	2 779	2 706	2 540	2 247	1 793	-	-
30	3 582	3 482	3 488	3 485	3 439	3 317	3 083	2 144	-
40	-	4 438	4 385	4 373	4 368	4 337	4 244	3 737	3 254
45	-	5 073	4 961	4 915	4 901	4 885	4 833	4 482	4 116
50	-	-	5 652	5 552	5 509	5 489	5 458	5 224	4 953
60	-	-	-	-	7 045	6 957	6 908	6 789	6 650
65	-	-	-	-	-	7 866	7 779	7 657	-

**Current consumption in A**

10	4.35	4.72	4.72	4.51	4.05	3.25	-	-	-
20	5.12	5.22	5.27	5.23	5.06	4.67	4.03	-	-
30	6.95	6.41	6.32	6.28	6.21	6.05	5.76	4.49	-
40	-	8.50	8.09	7.84	7.69	7.58	7.45	6.87	6.31
45	-	9.93	9.29	8.87	8.61	8.46	8.34	7.97	7.60
50	-	-	10.74	10.11	9.69	9.44	9.29	9.04	8.82
60	-	-	-	-	12.41	11.84	11.48	11.18	11.12
65	-	-	-	-	-	13.29	12.76	12.30	-

**Mass flow in kg/h**

10	139	213	256	305	359	420	-	-	-
20	126	207	255	307	365	430	502	-	-
30	104	192	243	299	360	429	504	681	-
40	-	166	220	279	344	415	495	678	784
45	-	148	203	264	330	404	485	671	779
50	-	-	184	246	314	389	471	661	770
60	-	-	-	-	269	347	432	628	740
65	-	-	-	-	-	319	406	605	-

**Coefficient of performance (C.O.P.)**

10	3.54	5.64	7.25	9.78	14.50	26.93	-	-	-
20	2.38	4.00	5.00	6.26	8.02	10.77	15.88	-	-
30	1.39	2.72	3.48	4.33	5.35	6.67	8.51	16.73	-
40	-	1.66	2.25	2.90	3.63	4.46	5.48	8.66	11.57
45	-	1.22	1.74	2.31	2.93	3.63	4.45	6.75	8.60
50	-	-	1.29	1.78	2.32	2.91	3.59	5.36	6.64
60	-	-	-	-	1.31	1.74	2.21	3.36	4.09
65	-	-	-	-	-	1.26	1.65	2.59	-

**Nominal performance at to = 5 °C, tc = 50 °C**

Cooling capacity	15 980	W
Power input	5 489	W
Current consumption	9.44	A
Mass flow	389	kg/h
C.O.P.	2.91	

**Pressure switch settings**

Maximum HP switch setting	43.7	bar(g)
Minimum LP switch setting	1.5	bar(g)
LP pump down setting	1.5	bar(g)

**Sound power data**

Sound power level		dB(A)
With accoustic hood		dB(A)

to: Evaporating temperature at dew point

tc: Condensing temperature at dew point

Rating conditions : Superheat = 10 K , Subcooling = 0 K

Tolerance according EN12900

Danfoss can accept no responsibility for possible errors in catalogues, brochures and other printed material. Danfoss reserves the right to alter its products without notice. This also applies to products already on order provided that such alternations can be made without subsequential changes being necessary in specifications already agreed. All trademarks in this material are property of the respective companies. Danfoss and the Danfoss logotype are trademarks of Danfoss A/S. All rights reserved.

# Datasheet, performance data

# Danfoss scroll compressor. VZH065CG

## Performance data at 55 Hz, ARI rating conditions

## R410A

Cond. temp. in °C (tc)	Evaporating temperature in °C (to)								
	-25	-15	-10	-5	0	5	10	20	25

### Cooling capacity in W

10	8 369	13 086	15 939	19 169	22 811	26 902	-	-	-
20	7 083	11 924	14 808	18 048	21 681	25 742	30 266	-	-
30	5 382	10 208	13 053	16 235	19 789	23 750	28 155	38 438	-
40	-	8 050	10 788	13 842	17 247	21 040	25 256	35 100	40 799
45	-	6 839	9 498	12 462	15 768	19 450	23 546	33 118	38 666
50	-	-	8 123	10 980	14 168	17 723	21 680	30 946	36 326
60	-	-	-	-	10 661	13 909	17 539	26 088	31 079
65	-	-	-	-	-	11 851	15 291	23 431	-

### Power input in W

10	2 230	2 190	2 076	1 853	1 488	945	-	-	-
20	2 784	2 793	2 779	2 706	2 540	2 247	1 793	-	-
30	3 582	3 482	3 488	3 485	3 439	3 317	3 083	2 144	-
40	-	4 438	4 385	4 373	4 368	4 337	4 244	3 737	3 254
45	-	5 073	4 961	4 915	4 901	4 885	4 833	4 482	4 116
50	-	-	5 652	5 552	5 509	5 489	5 458	5 224	4 953
60	-	-	-	-	7 045	6 957	6 908	6 789	6 650
65	-	-	-	-	-	7 866	7 779	7 657	-

### Current consumption in A

10	4.35	4.72	4.72	4.51	4.05	3.25	-	-	-
20	5.12	5.22	5.27	5.23	5.06	4.67	4.03	-	-
30	6.95	6.41	6.32	6.28	6.21	6.05	5.76	4.49	-
40	-	8.50	8.09	7.84	7.69	7.58	7.45	6.87	6.31
45	-	9.93	9.29	8.87	8.61	8.46	8.34	7.97	7.60
50	-	-	10.74	10.11	9.69	9.44	9.29	9.04	8.82
60	-	-	-	-	12.41	11.84	11.48	11.18	11.12
65	-	-	-	-	-	13.29	12.76	12.30	-

### Mass flow in kg/h

10	138	212	255	303	357	417	-	-	-
20	125	206	253	305	363	427	498	-	-
30	104	191	241	297	358	426	501	675	-
40	-	165	218	277	341	413	491	673	777
45	-	147	202	262	328	401	481	666	772
50	-	-	183	244	312	386	467	656	764
60	-	-	-	-	267	344	429	623	734
65	-	-	-	-	-	317	403	600	-

### Coefficient of performance (C.O.P.)

10	3.75	5.98	7.68	10.34	15.33	28.46	-	-	-
20	2.54	4.27	5.33	6.67	8.54	11.46	16.88	-	-
30	1.50	2.93	3.74	4.66	5.75	7.16	9.13	17.93	-
40	-	1.81	2.46	3.17	3.95	4.85	5.95	9.39	12.54
45	-	1.35	1.91	2.54	3.22	3.98	4.87	7.39	9.40
50	-	-	1.44	1.98	2.57	3.23	3.97	5.92	7.33
60	-	-	-	-	1.51	2.00	2.54	3.84	4.67
65	-	-	-	-	-	1.51	1.97	3.06	-

### Nominal performance at to = 7.2 °C, tc = 54.4 °C

Cooling capacity	17 730	W
Power input	6 073	W
Current consumption	10.31	A
Mass flow	405	kg/h
C.O.P.	2.92	

### Pressure switch settings

Maximum HP switch setting	43.7	bar(g)
Minimum LP switch setting	1.5	bar(g)
LP pump down setting	1.5	bar(g)

### Sound power data

Sound power level		dB(A)
With accoustic hood		dB(A)

to: Evaporating temperature at dew point

tc: Condensing temperature at dew point

Rating conditions : Superheat = 11.1 K , Subcooling = 8.3 K

Tolerance according EN12900

Danfoss can accept no responsibility for possible errors in catalogues, brochures and other printed material. Danfoss reserves the right to alter its products without notice. This also applies to products already on order provided that such alternations can be made without subsequential changes being necessary in specifications already agreed. All trademarks in this material are property of the respective companies. Danfoss and the Danfoss logotype are trademarks of Danfoss A/S. All rights reserved.

**Performance data at 60 Hz, EN 12900 rating conditions**
**R410A**

Cond. temp. in °C (tc)	Evaporating temperature in °C (to)								
	-25	-15	-10	-5	0	5	10	20	25

**Cooling capacity in W**

10	8 600	13 442	16 391	19 743	23 538	27 814	-	-	-
20	7 291	12 193	15 137	18 459	22 199	26 396	31 086	-	-
30	5 596	10 408	13 270	16 486	20 095	24 134	28 641	39 214	-
40	-	8 208	10 911	13 942	17 341	21 143	25 388	35 351	41 145
45	-	6 991	9 584	12 494	15 756	19 409	23 490	33 084	38 670
50	-	-	8 181	10 946	14 051	17 532	21 426	30 601	35 955
60	-	-	-	-	10 315	13 370	16 806	24 961	29 750
65	-	-	-	-	-	11 060	14 201	21 700	-

**Power input in W**

10	2 471	2 429	2 308	2 071	1 683	1 107	-	-	-
20	3 073	3 087	3 074	2 998	2 823	2 513	2 031	-	-
30	3 923	3 828	3 839	3 841	3 797	3 670	3 425	2 432	-
40	-	4 840	4 792	4 789	4 792	4 767	4 675	4 148	3 640
45	-	5 506	5 399	5 362	5 358	5 351	5 305	4 949	4 566
50	-	-	6 124	6 032	6 000	5 992	5 971	5 744	5 465
60	-	-	-	-	7 609	7 535	7 502	7 409	7 277
65	-	-	-	-	-	8 485	8 415	8 327	-

**Current consumption in A**

10	4.82	5.20	5.21	5.01	4.52	3.69	-	-	-
20	5.61	5.69	5.75	5.72	5.55	5.17	4.50	-	-
30	7.58	6.95	6.85	6.81	6.74	6.60	6.31	5.01	-
40	-	9.19	8.73	8.46	8.30	8.20	8.08	7.53	6.96
45	-	10.73	10.02	9.56	9.28	9.12	9.02	8.68	8.33
50	-	-	11.57	10.87	10.43	10.16	10.01	9.80	9.61
60	-	-	-	-	13.32	12.69	12.31	12.04	12.00
65	-	-	-	-	-	14.23	13.66	13.20	-

**Mass flow in kg/h**

10	151	232	279	332	392	459	-	-	-
20	139	226	277	334	398	469	548	-	-
30	117	211	266	326	393	468	551	744	-
40	-	185	242	306	376	454	540	741	857
45	-	167	226	291	363	442	530	734	851
50	-	-	206	272	345	426	515	722	841
60	-	-	-	-	300	383	475	687	809
65	-	-	-	-	-	355	448	663	-

**Coefficient of performance (C.O.P.)**

10	3.48	5.53	7.10	9.53	13.98	25.13	-	-	-
20	2.37	3.95	4.92	6.16	7.86	10.50	15.30	-	-
30	1.43	2.72	3.46	4.29	5.29	6.58	8.36	16.13	-
40	-	1.70	2.28	2.91	3.62	4.44	5.43	8.52	11.30
45	-	1.27	1.78	2.33	2.94	3.63	4.43	6.68	8.47
50	-	-	1.34	1.81	2.34	2.93	3.59	5.33	6.58
60	-	-	-	-	1.36	1.77	2.24	3.37	4.09
65	-	-	-	-	-	1.30	1.69	2.61	-

**Nominal performance at to = 5 °C, tc = 50 °C**

Cooling capacity	17 532	W
Power input	5 992	W
Current consumption	10.16	A
Mass flow	426	kg/h
C.O.P.	2.93	

**Pressure switch settings**

Maximum HP switch setting	43.7	bar(g)
Minimum LP switch setting	1.5	bar(g)
LP pump down setting	1.5	bar(g)

**Sound power data**

Sound power level	79	dB(A)
With accoustic hood	70	dB(A)

to: Evaporating temperature at dew point

tc: Condensing temperature at dew point

Rating conditions : Superheat = 10 K , Subcooling = 0 K

Tolerance according EN12900

Danfoss can accept no responsibility for possible errors in catalogues, brochures and other printed material. Danfoss reserves the right to alter its products without notice. This also applies to products already on order provided that such alternations can be made without subsequential changes being necessary in specifications already agreed. All trademarks in this material are property of the respective companies. Danfoss and the Danfoss logotype are trademarks of Danfoss A/S. All rights reserved.

**Performance data at 60 Hz, ARI rating conditions**
**R410A**

Cond. temp. in °C (tc)	Evaporating temperature in °C (to)								
	-25	-15	-10	-5	0	5	10	20	25

**Cooling capacity in W**

10	9 122	14 237	17 350	20 885	24 884	29 387	-	-	-
20	7 793	13 012	16 140	19 669	23 637	28 085	33 054	-	-
30	6 043	11 217	14 287	17 734	21 597	25 917	30 734	42 019	-
40	-	8 968	11 906	15 197	18 881	22 998	27 589	38 350	44 602
45	-	7 709	10 553	13 739	17 305	21 293	25 743	36 187	42 262
50	-	-	9 112	12 173	15 604	19 444	23 734	33 824	39 704
60	-	-	-	-	11 881	15 370	19 285	28 555	33 990
65	-	-	-	-	-	13 175	16 874	25 678	-

**Power input in W**

10	2 471	2 429	2 308	2 071	1 683	1 107	-	-	-
20	3 073	3 087	3 074	2 998	2 823	2 513	2 031	-	-
30	3 923	3 828	3 839	3 841	3 797	3 670	3 425	2 432	-
40	-	4 840	4 792	4 789	4 792	4 767	4 675	4 148	3 640
45	-	5 506	5 399	5 362	5 358	5 351	5 305	4 949	4 566
50	-	-	6 124	6 032	6 000	5 992	5 971	5 744	5 465
60	-	-	-	-	7 609	7 535	7 502	7 409	7 277
65	-	-	-	-	-	8 485	8 415	8 327	-

**Current consumption in A**

10	4.82	5.20	5.21	5.01	4.52	3.69	-	-	-
20	5.61	5.69	5.75	5.72	5.55	5.17	4.50	-	-
30	7.58	6.95	6.85	6.81	6.74	6.60	6.31	5.01	-
40	-	9.19	8.73	8.46	8.30	8.20	8.08	7.53	6.96
45	-	10.73	10.02	9.56	9.28	9.12	9.02	8.68	8.33
50	-	-	11.57	10.87	10.43	10.16	10.01	9.80	9.61
60	-	-	-	-	13.32	12.69	12.31	12.04	12.00
65	-	-	-	-	-	14.23	13.66	13.20	-

**Mass flow in kg/h**

10	150	230	277	330	389	455	-	-	-
20	138	225	276	332	395	466	544	-	-
30	116	210	264	324	391	465	547	738	-
40	-	184	241	304	374	451	536	735	850
45	-	166	225	289	360	439	526	728	844
50	-	-	205	271	343	423	512	716	834
60	-	-	-	-	298	380	471	681	802
65	-	-	-	-	-	353	445	657	-

**Coefficient of performance (C.O.P.)**

10	3.69	5.86	7.52	10.08	14.78	26.56	-	-	-
20	2.54	4.21	5.25	6.56	8.37	11.17	16.27	-	-
30	1.54	2.93	3.72	4.62	5.69	7.06	8.97	17.28	-
40	-	1.85	2.48	3.17	3.94	4.82	5.90	9.25	12.25
45	-	1.40	1.95	2.56	3.23	3.98	4.85	7.31	9.26
50	-	-	1.49	2.02	2.60	3.25	3.97	5.89	7.26
60	-	-	-	-	1.56	2.04	2.57	3.85	4.67
65	-	-	-	-	-	1.55	2.01	3.08	-

**Nominal performance at to = 7.2 °C, tc = 54.4 °C**

Cooling capacity	19 471	W
Power input	6 614	W
Current consumption	11.08	A
Mass flow	445	kg/h
C.O.P.	2.94	

to: Evaporating temperature at dew point

tc: Condensing temperature at dew point

Rating conditions : Superheat = 11.1 K , Subcooling = 8.3 K

**Pressure switch settings**

Maximum HP switch setting	43.7	bar(g)
Minimum LP switch setting	1.5	bar(g)
LP pump down setting	1.5	bar(g)

**Sound power data**

Sound power level	79	dB(A)
With acoustic hood	70	dB(A)

Tolerance according EN12900

Danfoss can accept no responsibility for possible errors in catalogues, brochures and other printed material. Danfoss reserves the right to alter its products without notice. This also applies to products already on order provided that such alternations can be made without subsequential changes being necessary in specifications already agreed. All trademarks in this material are property of the respective companies. Danfoss and the Danfoss logotype are trademarks of Danfoss A/S. All rights reserved.

# Datasheet, performance data

# Danfoss scroll compressor. VZH065CG

## Performance data at 65 Hz, EN 12900 rating conditions

## R410A

Cond. temp. in °C (tc)	Evaporating temperature in °C (to)								
	-25	-15	-10	-5	0	5	10	20	25

### Cooling capacity in W

10	9 308	14 523	17 716	21 357	25 489	30 155	-	-	-
20	7 954	13 209	16 381	19 973	24 028	28 588	33 696	-	-
30	6 211	11 345	14 415	17 877	21 773	26 145	31 037	42 547	-
40	-	9 053	11 940	15 189	18 844	22 945	27 534	38 346	44 653
45	-	7 788	10 551	13 662	17 163	21 095	25 500	35 894	41 966
50	-	-	9 080	12 030	15 355	19 094	23 290	33 215	39 025
60	-	-	-	-	11 392	14 660	18 348	27 139	32 321
65	-	-	-	-	-	12 195	15 558	23 627	-

### Power input in W

10	2 721	2 678	2 551	2 303	1 895	1 288	-	-	-
20	3 370	3 389	3 378	3 301	3 119	2 795	2 289	-	-
30	4 274	4 182	4 198	4 205	4 164	4 036	3 782	2 743	-
40	-	5 252	5 210	5 214	5 225	5 206	5 118	4 577	4 048
45	-	5 953	5 849	5 818	5 824	5 827	5 788	5 432	5 037
50	-	-	6 609	6 523	6 501	6 504	6 494	6 278	5 995
60	-	-	-	-	8 189	8 127	8 108	8 042	7 919
65	-	-	-	-	-	9 122	9 066	9 010	-

### Current consumption in A

10	5.31	5.69	5.69	5.48	4.98	4.12	-	-	-
20	6.13	6.19	6.24	6.22	6.05	5.66	4.98	-	-
30	8.21	7.51	7.40	7.35	7.30	7.17	6.88	5.57	-
40	-	9.86	9.37	9.09	8.93	8.84	8.74	8.22	7.65
45	-	11.50	10.73	10.25	9.96	9.81	9.72	9.42	9.08
50	-	-	12.38	11.64	11.17	10.90	10.77	10.60	10.42
60	-	-	-	-	14.22	13.57	13.18	12.93	12.92
65	-	-	-	-	-	15.19	14.60	14.15	-

### Mass flow in kg/h

10	164	250	302	359	424	497	-	-	-
20	151	245	300	362	431	508	594	-	-
30	130	230	289	354	426	507	597	808	-
40	-	204	265	333	409	493	586	804	930
45	-	186	249	318	395	480	575	796	924
50	-	-	229	299	377	464	560	784	913
60	-	-	-	-	331	420	518	747	879
65	-	-	-	-	-	392	491	722	-

### Coefficient of performance (C.O.P.)

10	3.42	5.42	6.94	9.27	13.45	23.42	-	-	-
20	2.36	3.90	4.85	6.05	7.70	10.23	14.72	-	-
30	1.45	2.71	3.43	4.25	5.23	6.48	8.21	15.51	-
40	-	1.72	2.29	2.91	3.61	4.41	5.38	8.38	11.03
45	-	1.31	1.80	2.35	2.95	3.62	4.41	6.61	8.33
50	-	-	1.37	1.84	2.36	2.94	3.59	5.29	6.51
60	-	-	-	-	1.39	1.80	2.26	3.37	4.08
65	-	-	-	-	-	1.34	1.72	2.62	-

### Nominal performance at to = 5 °C, tc = 50 °C

Cooling capacity	19 094	W
Power input	6 504	W
Current consumption	10.90	A
Mass flow	464	kg/h
C.O.P.	2.94	

### Pressure switch settings

Maximum HP switch setting	43.7	bar(g)
Minimum LP switch setting	1.5	bar(g)
LP pump down setting	1.5	bar(g)

### Sound power data

Sound power level		dB(A)
With acoustic hood		dB(A)

to: Evaporating temperature at dew point

tc: Condensing temperature at dew point

Rating conditions : Superheat = 10 K , Subcooling = 0 K

Tolerance according EN12900

Danfoss can accept no responsibility for possible errors in catalogues, brochures and other printed material. Danfoss reserves the right to alter its products without notice. This also applies to products already on order provided that such alterations can be made without subsequential changes being necessary in specifications already agreed. All trademarks in this material are property of the respective companies. Danfoss and the Danfoss logotype are trademarks of Danfoss A/S. All rights reserved.

**Performance data at 65 Hz, ARI rating conditions**
**R410A**

Cond. temp. in °C (tc)	Evaporating temperature in °C (to)								
	-25	-15	-10	-5	0	5	10	20	25

**Cooling capacity in W**

10	9 873	15 383	18 753	22 592	26 946	31 860	-	-	-
20	8 503	14 096	17 467	21 282	25 583	30 418	35 830	-	-
30	6 707	12 226	15 520	19 230	23 401	28 077	33 305	45 591	-
40	-	9 891	13 029	16 556	20 517	24 957	29 921	41 600	48 404
45	-	8 587	11 617	15 023	18 850	23 142	27 945	39 261	45 864
50	-	-	10 114	13 379	17 052	21 177	25 798	36 712	43 094
60	-	-	-	-	13 123	16 854	21 055	31 046	36 927
65	-	-	-	-	-	14 526	18 487	27 959	-

**Power input in W**

10	2 721	2 678	2 551	2 303	1 895	1 288	-	-	-
20	3 370	3 389	3 378	3 301	3 119	2 795	2 289	-	-
30	4 274	4 182	4 198	4 205	4 164	4 036	3 782	2 743	-
40	-	5 252	5 210	5 214	5 225	5 206	5 118	4 577	4 048
45	-	5 953	5 849	5 818	5 824	5 827	5 788	5 432	5 037
50	-	-	6 609	6 523	6 501	6 504	6 494	6 278	5 995
60	-	-	-	-	8 189	8 127	8 108	8 042	7 919
65	-	-	-	-	-	9 122	9 066	9 010	-

**Current consumption in A**

10	5.31	5.69	5.69	5.48	4.98	4.12	-	-	-
20	6.13	6.19	6.24	6.22	6.05	5.66	4.98	-	-
30	8.21	7.51	7.40	7.35	7.30	7.17	6.88	5.57	-
40	-	9.86	9.37	9.09	8.93	8.84	8.74	8.22	7.65
45	-	11.50	10.73	10.25	9.96	9.81	9.72	9.42	9.08
50	-	-	12.38	11.64	11.17	10.90	10.77	10.60	10.42
60	-	-	-	-	14.22	13.57	13.18	12.93	12.92
65	-	-	-	-	-	15.19	14.60	14.15	-

**Mass flow in kg/h**

10	163	249	300	357	421	494	-	-	-
20	150	244	298	360	428	504	590	-	-
30	129	229	287	351	423	503	593	801	-
40	-	203	264	331	406	489	582	797	922
45	-	185	247	316	392	477	571	789	916
50	-	-	227	297	375	461	556	777	905
60	-	-	-	-	329	417	515	741	871
65	-	-	-	-	-	389	487	716	-

**Coefficient of performance (C.O.P.)**

10	3.63	5.74	7.35	9.81	14.22	24.74	-	-	-
20	2.52	4.16	5.17	6.45	8.20	10.88	15.65	-	-
30	1.57	2.92	3.70	4.57	5.62	6.96	8.81	16.62	-
40	-	1.88	2.50	3.18	3.93	4.79	5.85	9.09	11.96
45	-	1.44	1.99	2.58	3.24	3.97	4.83	7.23	9.11
50	-	-	1.53	2.05	2.62	3.26	3.97	5.85	7.19
60	-	-	-	-	1.60	2.07	2.60	3.86	4.66
65	-	-	-	-	-	1.59	2.04	3.10	-

**Nominal performance at to = 7.2 °C, tc = 54.4 °C**

Cooling capacity	21 228	W
Power input	7 166	W
Current consumption	11.87	A
Mass flow	485	kg/h
C.O.P.	2.96	

to: Evaporating temperature at dew point

tc: Condensing temperature at dew point

Rating conditions : Superheat = 11.1 K , Subcooling = 8.3 K

**Pressure switch settings**

Maximum HP switch setting	43.7	bar(g)
Minimum LP switch setting	1.5	bar(g)
LP pump down setting	1.5	bar(g)

**Sound power data**

Sound power level		dB(A)
With accoustic hood		dB(A)

Tolerance according EN12900

Danfoss can accept no responsibility for possible errors in catalogues, brochures and other printed material. Danfoss reserves the right to alter its products without notice. This also applies to products already on order provided that such alternations can be made without subsequential changes being necessary in specifications already agreed. All trademarks in this material are property of the respective companies. Danfoss and the Danfoss logotype are trademarks of Danfoss A/S. All rights reserved.



# Datasheet, performance data

# Danfoss scroll compressor. VZH065CG

## Performance data at 70 Hz, EN 12900 rating conditions

## R410A

Cond. temp. in °C (tc)	Evaporating temperature in °C (to)								
	-25	-15	-10	-5	0	5	10	20	25

### Cooling capacity in W

10	10 013	15 599	19 035	22 963	27 430	32 486	-	-	-
20	8 618	14 222	17 620	21 479	25 847	30 770	36 295	-	-
30	6 828	12 282	15 559	19 264	23 446	28 151	33 425	45 871	-
40	4 771	9 904	12 974	16 440	20 349	24 747	29 681	41 341	48 160
45	-	8 592	11 524	14 837	18 575	22 786	27 514	38 708	45 265
50	-	7 218	9 990	13 125	16 669	20 667	25 164	35 838	42 106
60	-	-	6 724	9 421	12 488	15 970	19 910	29 340	34 916
65	-	-	-	-	-	-	-	-	-

### Power input in W

10	2 978	2 936	2 806	2 548	2 123	1 489	-	-	-
20	3 676	3 700	3 691	3 614	3 428	3 093	2 567	-	-
30	4 636	4 544	4 566	4 578	4 541	4 413	4 153	3 078	-
40	6 067	5 675	5 636	5 647	5 667	5 655	5 571	5 024	4 480
45	-	6 413	6 309	6 285	6 299	6 312	6 282	5 930	5 528
50	-	7 300	7 109	7 027	7 013	7 026	7 027	6 826	6 542
60	-	-	9 190	8 924	8 785	8 733	8 726	8 689	8 576
65	-	-	-	-	-	-	-	-	-

### Current consumption in A

10	5.83	6.17	6.17	5.95	5.43	4.54	-	-	-
20	6.68	6.70	6.75	6.73	6.56	6.17	5.48	-	-
30	8.83	8.08	7.96	7.92	7.87	7.75	7.48	6.17	-
40	12.52	10.53	10.02	9.73	9.58	9.51	9.42	8.93	8.37
45	-	12.23	11.44	10.94	10.66	10.52	10.45	10.19	9.86
50	-	14.29	13.16	12.40	11.92	11.67	11.55	11.42	11.26
60	-	-	17.61	16.15	15.12	14.46	14.08	13.86	13.88
65	-	-	-	-	-	-	-	-	-

### Mass flow in kg/h

10	176	269	324	386	456	535	-	-	-
20	164	264	323	389	463	547	640	-	-
30	143	249	312	381	459	546	643	871	-
40	111	223	288	361	441	531	632	866	1 003
45	-	205	272	345	427	519	620	858	996
50	-	184	252	327	410	502	605	846	985
60	-	-	201	278	363	457	562	807	949
65	-	-	-	-	-	-	-	-	-

### Coefficient of performance (C.O.P.)

10	3.36	5.31	6.78	9.01	12.92	21.82	-	-	-
20	2.34	3.84	4.77	5.94	7.54	9.95	14.14	-	-
30	1.47	2.70	3.41	4.21	5.16	6.38	8.05	14.90	-
40	0.79	1.75	2.30	2.91	3.59	4.38	5.33	8.23	10.75
45	-	1.34	1.83	2.36	2.95	3.61	4.38	6.53	8.19
50	-	0.99	1.41	1.87	2.38	2.94	3.58	5.25	6.44
60	-	-	0.73	1.06	1.42	1.83	2.28	3.38	4.07
65	-	-	-	-	-	-	-	-	-

### Nominal performance at to = 5 °C, tc = 50 °C

Cooling capacity	20 667	W
Power input	7 026	W
Current consumption	11.67	A
Mass flow	502	kg/h
C.O.P.	2.94	

### Pressure switch settings

Maximum HP switch setting	43.7	bar(g)
Minimum LP switch setting	1.5	bar(g)
LP pump down setting	1.5	bar(g)

### Sound power data

Sound power level		dB(A)
With acoustic hood		dB(A)

to: Evaporating temperature at dew point

tc: Condensing temperature at dew point

Rating conditions : Superheat = 10 K , Subcooling = 0 K

Tolerance according EN12900

Danfoss can accept no responsibility for possible errors in catalogues, brochures and other printed material. Danfoss reserves the right to alter its products without notice. This also applies to products already on order provided that such alterations can be made without subsequential changes being necessary in specifications already agreed. All trademarks in this material are property of the respective companies. Danfoss and the Danfoss logotype are trademarks of Danfoss A/S. All rights reserved.

# Datasheet, performance data

# Danfoss scroll compressor. VZH065CG

## Performance data at 70 Hz, ARI rating conditions

## R410A

Cond. temp. in °C (tc)	Evaporating temperature in °C (to)								
	-25	-15	-10	-5	0	5	10	20	25

### Cooling capacity in W

10	10 621	16 522	20 148	24 290	28 998	34 322	-	-	-
20	9 212	15 177	18 789	22 887	27 520	32 739	38 593	-	-
30	7 374	13 236	16 752	20 723	25 199	30 231	35 867	49 153	-
40	5 227	10 821	14 157	17 919	22 156	26 918	32 254	44 848	52 206
45	-	9 474	12 689	16 315	20 402	24 997	30 153	42 339	49 470
50	-	8 053	11 127	14 597	18 511	22 921	27 874	39 612	46 496
60	-	-	7 781	10 876	14 385	18 360	22 848	33 564	39 891
65	-	-	-	-	-	-	-	-	-

### Power input in W

10	2 978	2 936	2 806	2 548	2 123	1 489	-	-	-
20	3 676	3 700	3 691	3 614	3 428	3 093	2 567	-	-
30	4 636	4 544	4 566	4 578	4 541	4 413	4 153	3 078	-
40	6 067	5 675	5 636	5 647	5 667	5 655	5 571	5 024	4 480
45	-	6 413	6 309	6 285	6 299	6 312	6 282	5 930	5 528
50	-	7 300	7 109	7 027	7 013	7 026	7 027	6 826	6 542
60	-	-	9 190	8 924	8 785	8 733	8 726	8 689	8 576
65	-	-	-	-	-	-	-	-	-

### Current consumption in A

10	5.83	6.17	6.17	5.95	5.43	4.54	-	-	-
20	6.68	6.70	6.75	6.73	6.56	6.17	5.48	-	-
30	8.83	8.08	7.96	7.92	7.87	7.75	7.48	6.17	-
40	12.52	10.53	10.02	9.73	9.58	9.51	9.42	8.93	8.37
45	-	12.23	11.44	10.94	10.66	10.52	10.45	10.19	9.86
50	-	14.29	13.16	12.40	11.92	11.67	11.55	11.42	11.26
60	-	-	17.61	16.15	15.12	14.46	14.08	13.86	13.88
65	-	-	-	-	-	-	-	-	-

### Mass flow in kg/h

10	175	267	322	384	453	532	-	-	-
20	163	262	321	387	460	543	635	-	-
30	142	248	310	379	456	542	638	864	-
40	111	222	286	358	438	528	627	859	994
45	-	204	270	343	425	515	616	851	988
50	-	183	250	324	407	499	601	839	977
60	-	-	200	276	361	454	558	801	941
65	-	-	-	-	-	-	-	-	-

### Coefficient of performance (C.O.P.)

10	3.57	5.63	7.18	9.53	13.66	23.06	-	-	-
20	2.51	4.10	5.09	6.33	8.03	10.59	15.04	-	-
30	1.59	2.91	3.67	4.53	5.55	6.85	8.64	15.97	-
40	0.86	1.91	2.51	3.17	3.91	4.76	5.79	8.93	11.65
45	-	1.48	2.01	2.60	3.24	3.96	4.80	7.14	8.95
50	-	1.10	1.57	2.08	2.64	3.26	3.97	5.80	7.11
60	-	-	0.85	1.22	1.64	2.10	2.62	3.86	4.65
65	-	-	-	-	-	-	-	-	-

### Nominal performance at to = 7.2 °C, tc = 54.4 °C

Cooling capacity	23 002	W
Power input	7 728	W
Current consumption	12.69	A
Mass flow	525	kg/h
C.O.P.	2.98	

### Pressure switch settings

Maximum HP switch setting	43.7	bar(g)
Minimum LP switch setting	1.5	bar(g)
LP pump down setting	1.5	bar(g)

### Sound power data

Sound power level		dB(A)
With accoustic hood		dB(A)

to: Evaporating temperature at dew point

tc: Condensing temperature at dew point

Rating conditions : Superheat = 11.1 K , Subcooling = 8.3 K

Tolerance according EN12900

Danfoss can accept no responsibility for possible errors in catalogues, brochures and other printed material. Danfoss reserves the right to alter its products without notice. This also applies to products already on order provided that such alternations can be made without subsequential changes being necessary in specifications already agreed. All trademarks in this material are property of the respective companies. Danfoss and the Danfoss logotype are trademarks of Danfoss A/S. All rights reserved.

**Performance data at 75 Hz, EN 12900 rating conditions**
**R410A**

Cond. temp. in °C (tc)	Evaporating temperature in °C (to)								
	-25	-15	-10	-5	0	5	10	20	25

**Cooling capacity in W**

10	10 716	16 669	20 346	24 559	29 362	34 805	-	-	-
20	9 281	15 231	18 854	22 979	27 657	32 941	38 882	-	-
30	7 449	13 219	16 701	20 649	25 115	30 150	35 806	49 187	-
40	5 345	10 761	14 012	17 694	21 857	26 551	31 828	44 334	51 665
45	-	9 404	12 505	16 019	19 994	24 482	29 533	41 526	48 569
50	-	7 982	10 910	14 231	17 994	22 250	27 048	38 472	45 196
60	-	-	7 507	10 355	13 603	17 299	21 493	31 563	37 535
65	-	-	-	-	-	-	-	-	-

**Power input in W**

10	3 244	3 205	3 072	2 807	2 367	1 709	-	-	-
20	3 989	4 018	4 013	3 938	3 750	3 406	2 864	-	-
30	5 009	4 914	4 941	4 959	4 927	4 802	4 540	3 437	-
40	6 518	6 109	6 072	6 089	6 117	6 114	6 037	5 490	4 934
45	-	6 887	6 781	6 761	6 784	6 806	6 785	6 444	6 038
50	-	7 820	7 623	7 542	7 535	7 558	7 570	7 388	7 107
60	-	-	9 810	9 536	9 397	9 352	9 357	9 348	9 247
65	-	-	-	-	-	-	-	-	-

**Current consumption in A**

10	6.38	6.66	6.63	6.39	5.86	4.96	-	-	-
20	7.26	7.23	7.27	7.25	7.08	6.69	6.00	-	-
30	9.46	8.65	8.53	8.50	8.46	8.35	8.09	6.79	-
40	13.22	11.18	10.67	10.38	10.25	10.19	10.13	9.67	9.11
45	-	12.94	12.14	11.64	11.37	11.25	11.20	10.99	10.67
50	-	15.06	13.92	13.15	12.69	12.45	12.35	12.27	12.13
60	-	-	18.53	17.05	16.02	15.37	15.01	14.84	14.88
65	-	-	-	-	-	-	-	-	-

**Mass flow in kg/h**

10	188	287	346	413	488	574	-	-	-
20	177	283	346	416	496	585	686	-	-
30	156	268	334	408	492	585	689	934	-
40	125	242	311	388	474	570	677	929	1 076
45	-	225	295	373	460	557	666	920	1 069
50	-	204	275	354	442	541	650	908	1 057
60	-	-	225	305	395	496	607	869	1 020
65	-	-	-	-	-	-	-	-	-

**Coefficient of performance (C.O.P.)**

10	3.30	5.20	6.62	8.75	12.40	20.36	-	-	-
20	2.33	3.79	4.70	5.84	7.38	9.67	13.58	-	-
30	1.49	2.69	3.38	4.16	5.10	6.28	7.89	14.31	-
40	0.82	1.76	2.31	2.91	3.57	4.34	5.27	8.08	10.47
45	-	1.37	1.84	2.37	2.95	3.60	4.35	6.44	8.04
50	-	1.02	1.43	1.89	2.39	2.94	3.57	5.21	6.36
60	-	-	0.77	1.09	1.45	1.85	2.30	3.38	4.06
65	-	-	-	-	-	-	-	-	-

**Nominal performance at to = 5 °C, tc = 50 °C**

Cooling capacity	22 250	W
Power input	7 558	W
Current consumption	12.45	A
Mass flow	541	kg/h
C.O.P.	2.94	

**Pressure switch settings**

Maximum HP switch setting	43.7	bar(g)
Minimum LP switch setting	1.5	bar(g)
LP pump down setting	1.5	bar(g)

**Sound power data**

Sound power level		dB(A)
With accoustic hood		dB(A)

to: Evaporating temperature at dew point

tc: Condensing temperature at dew point

Rating conditions : Superheat = 10 K , Subcooling = 0 K

Tolerance according EN12900

Danfoss can accept no responsibility for possible errors in catalogues, brochures and other printed material. Danfoss reserves the right to alter its products without notice. This also applies to products already on order provided that such alterations can be made without subsequential changes being necessary in specifications already agreed. All trademarks in this material are property of the respective companies. Danfoss and the Danfoss logotype are trademarks of Danfoss A/S. All rights reserved.

# Datasheet, performance data

# Danfoss scroll compressor. VZH065CG

## Performance data at 75 Hz, ARI rating conditions

## R410A

Cond. temp. in °C (tc)	Evaporating temperature in °C (to)								
	-25	-15	-10	-5	0	5	10	20	25

### Cooling capacity in W

10	11 367	17 656	21 536	25 979	31 040	36 773	-	-	-
20	9 921	16 254	20 104	24 484	29 448	35 050	41 344	-	-
30	8 044	14 247	17 982	22 213	26 993	32 378	38 422	52 705	-
40	5 856	11 757	15 291	19 286	23 798	28 880	34 587	48 096	56 006
45	-	10 369	13 770	17 615	21 960	26 859	32 365	45 422	53 081
50	-	8 905	12 152	15 826	19 983	24 676	29 961	42 522	49 908
60	-	-	8 687	11 954	15 669	19 888	24 664	36 107	42 883
65	-	-	-	-	-	-	-	-	-

### Power input in W

10	3 244	3 205	3 072	2 807	2 367	1 709	-	-	-
20	3 989	4 018	4 013	3 938	3 750	3 406	2 864	-	-
30	5 009	4 914	4 941	4 959	4 927	4 802	4 540	3 437	-
40	6 518	6 109	6 072	6 089	6 117	6 114	6 037	5 490	4 934
45	-	6 887	6 781	6 761	6 784	6 806	6 785	6 444	6 038
50	-	7 820	7 623	7 542	7 535	7 558	7 570	7 388	7 107
60	-	-	9 810	9 536	9 397	9 352	9 357	9 348	9 247
65	-	-	-	-	-	-	-	-	-

### Current consumption in A

10	6.38	6.66	6.63	6.39	5.86	4.96	-	-	-
20	7.26	7.23	7.27	7.25	7.08	6.69	6.00	-	-
30	9.46	8.65	8.53	8.50	8.46	8.35	8.09	6.79	-
40	13.22	11.18	10.67	10.38	10.25	10.19	10.13	9.67	9.11
45	-	12.94	12.14	11.64	11.37	11.25	11.20	10.99	10.67
50	-	15.06	13.92	13.15	12.69	12.45	12.35	12.27	12.13
60	-	-	18.53	17.05	16.02	15.37	15.01	14.84	14.88
65	-	-	-	-	-	-	-	-	-

### Mass flow in kg/h

10	187	285	344	410	485	570	-	-	-
20	175	281	344	414	493	581	681	-	-
30	155	267	332	406	488	581	684	926	-
40	124	241	309	386	471	566	672	922	1 067
45	-	223	293	370	457	554	661	913	1 060
50	-	203	273	352	439	537	646	900	1 048
60	-	-	223	303	393	492	603	862	1 012
65	-	-	-	-	-	-	-	-	-

### Coefficient of performance (C.O.P.)

10	3.50	5.51	7.01	9.26	13.11	21.51	-	-	-
20	2.49	4.04	5.01	6.22	7.85	10.29	14.44	-	-
30	1.61	2.90	3.64	4.48	5.48	6.74	8.46	15.33	-
40	0.90	1.92	2.52	3.17	3.89	4.72	5.73	8.76	11.35
45	-	1.51	2.03	2.61	3.24	3.95	4.77	7.05	8.79
50	-	1.14	1.59	2.10	2.65	3.26	3.96	5.76	7.02
60	-	-	0.89	1.25	1.67	2.13	2.64	3.86	4.64
65	-	-	-	-	-	-	-	-	-

### Nominal performance at to = 7.2 °C, tc = 54.4 °C

Cooling capacity	24 791	W
Power input	8 302	W
Current consumption	13.53	A
Mass flow	566	kg/h
C.O.P.	2.99	

### Pressure switch settings

Maximum HP switch setting	43.7	bar(g)
Minimum LP switch setting	1.5	bar(g)
LP pump down setting	1.5	bar(g)

### Sound power data

Sound power level		dB(A)
With acoustic hood		dB(A)

to: Evaporating temperature at dew point

tc: Condensing temperature at dew point

Rating conditions : Superheat = 11.1 K , Subcooling = 8.3 K

Tolerance according EN12900

Danfoss can accept no responsibility for possible errors in catalogues, brochures and other printed material. Danfoss reserves the right to alter its products without notice. This also applies to products already on order provided that such alterations can be made without consequential changes being necessary in specifications already agreed. All trademarks in this material are property of the respective companies. Danfoss and the Danfoss logotype are trademarks of Danfoss A/S. All rights reserved.

# Datasheet, performance data

# Danfoss scroll compressor. VZH065CG

## Performance data at 80 Hz, EN 12900 rating conditions

## R410A

Cond. temp. in °C (tc)	Evaporating temperature in °C (to)							
	-25	-15	-10	-5	0	5	10	20

### Cooling capacity in W

10	11 417	17 734	21 650	26 147	31 283	37 114	-	-	-
20	9 945	16 236	20 082	24 471	29 458	35 102	41 458	-	-
30	8 072	14 158	17 843	22 032	26 780	32 143	38 179	52 493	-
40	5 925	11 623	15 056	18 952	23 367	28 356	33 975	47 326	55 170
45	-	10 223	13 494	17 208	21 420	26 185	31 558	44 349	51 877
50	-	8 757	11 841	15 347	19 329	23 843	28 942	41 115	48 297
60	-	-	8 305	11 306	14 735	18 648	23 096	33 808	40 177
65	-	-	-	-	-	-	-	-	-

### Power input in W

10	3 518	3 482	3 349	3 079	2 628	1 950	-	-	-
20	4 311	4 345	4 344	4 272	4 084	3 735	3 180	-	-
30	5 391	5 293	5 324	5 349	5 324	5 203	4 941	3 819	-
40	6 986	6 554	6 517	6 539	6 576	6 582	6 513	5 973	5 411
45	-	7 374	7 265	7 247	7 277	7 309	7 300	6 974	6 569
50	-	8 357	8 151	8 069	8 067	8 100	8 124	7 964	7 690
60	-	-	10 454	10 167	10 026	9 986	10 001	10 020	9 934
65	-	-	-	-	-	-	-	-	-

### Current consumption in A

10	6.94	7.14	7.09	6.83	6.28	5.37	-	-	-
20	7.86	7.77	7.80	7.77	7.61	7.22	6.53	-	-
30	10.08	9.25	9.13	9.09	9.07	8.97	8.73	7.45	-
40	13.87	11.83	11.32	11.05	10.94	10.90	10.86	10.43	9.89
45	-	13.61	12.83	12.35	12.10	12.01	11.98	11.81	11.51
50	-	15.77	14.65	13.90	13.47	13.25	13.18	13.15	13.03
60	-	-	19.37	17.92	16.92	16.30	15.97	15.85	15.91
65	-	-	-	-	-	-	-	-	-

### Mass flow in kg/h

10	201	306	368	440	520	612	-	-	-
20	189	302	368	443	528	624	731	-	-
30	169	287	357	436	524	623	734	997	-
40	138	262	334	416	507	609	723	992	1 149
45	-	244	318	401	493	596	711	983	1 141
50	-	224	298	382	475	580	696	970	1 130
60	-	-	249	333	428	534	653	930	1 092
65	-	-	-	-	-	-	-	-	-

### Coefficient of performance (C.O.P.)

10	3.25	5.09	6.46	8.49	11.91	19.03	-	-	-
20	2.31	3.74	4.62	5.73	7.21	9.40	13.04	-	-
30	1.50	2.67	3.35	4.12	5.03	6.18	7.73	13.74	-
40	0.85	1.77	2.31	2.90	3.55	4.31	5.22	7.92	10.20
45	-	1.39	1.86	2.37	2.94	3.58	4.32	6.36	7.90
50	-	1.05	1.45	1.90	2.40	2.94	3.56	5.16	6.28
60	-	-	0.79	1.11	1.47	1.87	2.31	3.37	4.04
65	-	-	-	-	-	-	-	-	-

### Nominal performance at to = 5 °C, tc = 50 °C

Cooling capacity	23 843	W
Power input	8 100	W
Current consumption	13.25	A
Mass flow	580	kg/h
C.O.P.	2.94	

### Pressure switch settings

Maximum HP switch setting	43.7	bar(g)
Minimum LP switch setting	1.5	bar(g)
LP pump down setting	1.5	bar(g)

### Sound power data

Sound power level		dB(A)
With accoustic hood		dB(A)

to: Evaporating temperature at dew point

tc: Condensing temperature at dew point

Rating conditions : Superheat = 10 K , Subcooling = 0 K

Tolerance according EN12900

Danfoss can accept no responsibility for possible errors in catalogues, brochures and other printed material. Danfoss reserves the right to alter its products without notice. This also applies to products already on order provided that such alterations can be made without subsequential changes being necessary in specifications already agreed. All trademarks in this material are property of the respective companies. Danfoss and the Danfoss logotype are trademarks of Danfoss A/S. All rights reserved.

# Datasheet, performance data

# Danfoss scroll compressor. VZH065CG

## Performance data at 80 Hz, ARI rating conditions

## R410A

Cond. temp. in °C (tc)	Evaporating temperature in °C (to)								
	-25	-15	-10	-5	0	5	10	20	25

### Cooling capacity in W

10	12 110	18 784	22 917	27 659	33 071	39 212	-	-	-
20	10 630	17 327	21 414	26 074	31 366	37 349	44 083	-	-
30	8 717	15 258	19 211	23 700	28 782	34 519	40 969	56 248	-
40	6 491	12 699	16 429	20 657	25 442	30 843	36 921	51 342	59 805
45	-	11 273	14 859	18 923	23 526	28 726	34 584	48 509	56 696
50	-	9 770	13 189	17 067	21 466	26 443	32 058	45 444	53 333
60	-	-	9 611	13 051	16 974	21 438	26 504	38 676	45 902
65	-	-	-	-	-	-	-	-	-

### Power input in W

10	3 518	3 482	3 349	3 079	2 628	1 950	-	-	-
20	4 311	4 345	4 344	4 272	4 084	3 735	3 180	-	-
30	5 391	5 293	5 324	5 349	5 324	5 203	4 941	3 819	-
40	6 986	6 554	6 517	6 539	6 576	6 582	6 513	5 973	5 411
45	-	7 374	7 265	7 247	7 277	7 309	7 300	6 974	6 569
50	-	8 357	8 151	8 069	8 067	8 100	8 124	7 964	7 690
60	-	-	10 454	10 167	10 026	9 986	10 001	10 020	9 934
65	-	-	-	-	-	-	-	-	-

### Current consumption in A

10	6.94	7.14	7.09	6.83	6.28	5.37	-	-	-
20	7.86	7.77	7.80	7.77	7.61	7.22	6.53	-	-
30	10.08	9.25	9.13	9.09	9.07	8.97	8.73	7.45	-
40	13.87	11.83	11.32	11.05	10.94	10.90	10.86	10.43	9.89
45	-	13.61	12.83	12.35	12.10	12.01	11.98	11.81	11.51
50	-	15.77	14.65	13.90	13.47	13.25	13.18	13.15	13.03
60	-	-	19.37	17.92	16.92	16.30	15.97	15.85	15.91
65	-	-	-	-	-	-	-	-	-

### Mass flow in kg/h

10	199	304	366	437	517	607	-	-	-
20	188	300	366	441	525	619	726	-	-
30	168	286	355	433	521	619	729	989	-
40	137	260	332	413	503	605	718	984	1 139
45	-	243	316	398	490	592	706	975	1 132
50	-	223	297	379	472	576	691	962	1 120
60	-	-	247	331	425	531	648	923	1 083
65	-	-	-	-	-	-	-	-	-

### Coefficient of performance (C.O.P.)

10	3.44	5.39	6.84	8.98	12.59	20.11	-	-	-
20	2.47	3.99	4.93	6.10	7.68	10.00	13.86	-	-
30	1.62	2.88	3.61	4.43	5.41	6.63	8.29	14.73	-
40	0.93	1.94	2.52	3.16	3.87	4.69	5.67	8.60	11.05
45	-	1.53	2.05	2.61	3.23	3.93	4.74	6.96	8.63
50	-	1.17	1.62	2.12	2.66	3.26	3.95	5.71	6.94
60	-	-	0.92	1.28	1.69	2.15	2.65	3.86	4.62
65	-	-	-	-	-	-	-	-	-

### Nominal performance at to = 7.2 °C, tc = 54.4 °C

Cooling capacity	26 597	W
Power input	8 886	W
Current consumption	14.40	A
Mass flow	607	kg/h
C.O.P.	2.99	

### Pressure switch settings

Maximum HP switch setting	43.7	bar(g)
Minimum LP switch setting	1.5	bar(g)
LP pump down setting	1.5	bar(g)

### Sound power data

Sound power level		dB(A)
With accoustic hood		dB(A)

to: Evaporating temperature at dew point

tc: Condensing temperature at dew point

Rating conditions : Superheat = 11.1 K , Subcooling = 8.3 K

Tolerance according EN12900

Danfoss can accept no responsibility for possible errors in catalogues, brochures and other printed material. Danfoss reserves the right to alter its products without notice. This also applies to products already on order provided that such alterations can be made without subsequential changes being necessary in specifications already agreed. All trademarks in this material are property of the respective companies. Danfoss and the Danfoss logotype are trademarks of Danfoss A/S. All rights reserved.

# Datasheet, performance data

# Danfoss scroll compressor. VZH065CG

## Performance data at 85 Hz, EN 12900 rating conditions

## R410A

Cond. temp. in °C (tc)	Evaporating temperature in °C (to)							
	-25	-15	-10	-5	0	5	10	20

### Cooling capacity in W

10	12 115	18 794	22 947	27 727	33 194	39 411	-	-	-
20	10 607	17 239	21 306	25 956	31 250	37 252	44 022	-	-
30	8 697	15 096	18 984	23 411	28 440	34 130	40 545	55 791	-
40	6 510	12 490	16 103	20 213	24 879	30 162	36 122	50 318	58 674
45	-	11 051	14 491	18 405	22 852	27 892	33 587	47 176	55 190
50	-	9 541	12 782	16 474	20 675	25 446	30 845	43 768	51 409
60	-	-	9 119	12 273	15 887	20 016	24 719	36 076	42 843
65	-	-	-	-	-	-	-	-	-

### Power input in W

10	3 800	3 770	3 638	3 365	2 904	2 210	-	-	-
20	4 641	4 680	4 684	4 617	4 431	4 079	3 516	-	-
30	5 784	5 679	5 715	5 748	5 730	5 616	5 358	4 225	-
40	7 469	7 010	6 971	6 998	7 043	7 060	7 002	6 474	5 911
45	-	7 875	7 759	7 743	7 779	7 822	7 824	7 520	7 121
50	-	8 912	8 693	8 608	8 610	8 652	8 688	8 554	8 291
60	-	-	11 121	10 818	10 671	10 633	10 657	10 705	10 636
65	-	-	-	-	-	-	-	-	-

### Current consumption in A

10	7.54	7.62	7.54	7.25	6.69	5.77	-	-	-
20	8.48	8.33	8.35	8.31	8.14	7.75	7.07	-	-
30	10.70	9.85	9.73	9.71	9.69	9.61	9.38	8.14	-
40	14.47	12.46	11.97	11.73	11.64	11.63	11.61	11.23	10.71
45	-	14.26	13.50	13.06	12.84	12.78	12.78	12.66	12.37
50	-	16.43	15.35	14.65	14.25	14.08	14.04	14.06	13.95
60	-	-	20.15	18.76	17.82	17.25	16.96	16.91	16.98
65	-	-	-	-	-	-	-	-	-

### Mass flow in kg/h

10	213	324	390	466	552	649	-	-	-
20	202	320	391	470	560	662	776	-	-
30	182	306	380	463	557	662	780	1 059	-
40	152	281	358	443	540	648	769	1 054	1 222
45	-	264	342	428	526	635	757	1 046	1 214
50	-	244	322	410	508	619	742	1 033	1 202
60	-	-	273	362	462	574	698	993	1 165
65	-	-	-	-	-	-	-	-	-

### Coefficient of performance (C.O.P.)

10	3.19	4.98	6.31	8.24	11.43	17.83	-	-	-
20	2.29	3.68	4.55	5.62	7.05	9.13	12.52	-	-
30	1.50	2.66	3.32	4.07	4.96	6.08	7.57	13.20	-
40	0.87	1.78	2.31	2.89	3.53	4.27	5.16	7.77	9.93
45	-	1.40	1.87	2.38	2.94	3.57	4.29	6.27	7.75
50	-	1.07	1.47	1.91	2.40	2.94	3.55	5.12	6.20
60	-	-	0.82	1.13	1.49	1.88	2.32	3.37	4.03
65	-	-	-	-	-	-	-	-	-

### Nominal performance at to = 5 °C, tc = 50 °C

Cooling capacity	25 446	W
Power input	8 652	W
Current consumption	14.08	A
Mass flow	619	kg/h
C.O.P.	2.94	

### Pressure switch settings

Maximum HP switch setting	43.7	bar(g)
Minimum LP switch setting	1.5	bar(g)
LP pump down setting	1.5	bar(g)

### Sound power data

Sound power level		dB(A)
With accoustic hood		dB(A)

to: Evaporating temperature at dew point

tc: Condensing temperature at dew point

Rating conditions : Superheat = 10 K , Subcooling = 0 K

Tolerance according EN12900

Danfoss can accept no responsibility for possible errors in catalogues, brochures and other printed material. Danfoss reserves the right to alter its products without notice. This also applies to products already on order provided that such alterations can be made without subsequential changes being necessary in specifications already agreed. All trademarks in this material are property of the respective companies. Danfoss and the Danfoss logotype are trademarks of Danfoss A/S. All rights reserved.

# Datasheet, performance data

# Danfoss scroll compressor. VZH065CG

## Performance data at 85 Hz, ARI rating conditions

## R410A

Cond. temp. in °C (tc)	Evaporating temperature in °C (to)							
	-25	-15	-10	-5	0	5	10	20

### Cooling capacity in W

10	12 850	19 906	24 290	29 330	35 091	41 639	-	-	-
20	11 339	18 396	22 718	27 656	33 274	39 637	46 809	-	-
30	9 393	16 270	20 440	25 184	30 566	36 653	43 508	59 782	-
40	7 132	13 646	17 573	22 032	27 089	32 808	39 254	54 587	63 603
45	-	12 185	15 956	20 239	25 098	30 600	36 807	51 601	60 317
50	-	10 645	14 237	18 320	22 960	28 221	34 167	48 376	56 769
60	-	-	10 552	14 169	18 300	23 011	28 367	41 270	48 948
65	-	-	-	-	-	-	-	-	-

### Power input in W

10	3 800	3 770	3 638	3 365	2 904	2 210	-	-	-
20	4 641	4 680	4 684	4 617	4 431	4 079	3 516	-	-
30	5 784	5 679	5 715	5 748	5 730	5 616	5 358	4 225	-
40	7 469	7 010	6 971	6 998	7 043	7 060	7 002	6 474	5 911
45	-	7 875	7 759	7 743	7 779	7 822	7 824	7 520	7 121
50	-	8 912	8 693	8 608	8 610	8 652	8 688	8 554	8 291
60	-	-	11 121	10 818	10 671	10 633	10 657	10 705	10 636
65	-	-	-	-	-	-	-	-	-

### Current consumption in A

10	7.54	7.62	7.54	7.25	6.69	5.77	-	-	-
20	8.48	8.33	8.35	8.31	8.14	7.75	7.07	-	-
30	10.70	9.85	9.73	9.71	9.69	9.61	9.38	8.14	-
40	14.47	12.46	11.97	11.73	11.64	11.63	11.61	11.23	10.71
45	-	14.26	13.50	13.06	12.84	12.78	12.78	12.66	12.37
50	-	16.43	15.35	14.65	14.25	14.08	14.04	14.06	13.95
60	-	-	20.15	18.76	17.82	17.25	16.96	16.91	16.98
65	-	-	-	-	-	-	-	-	-

### Mass flow in kg/h

10	212	322	388	463	548	645	-	-	-
20	201	318	388	467	557	657	771	-	-
30	181	304	378	460	553	657	774	1 051	-
40	151	280	355	440	536	643	763	1 046	1 211
45	-	263	339	426	522	631	752	1 037	1 204
50	-	242	320	407	505	614	736	1 024	1 192
60	-	-	271	360	459	570	693	985	1 155
65	-	-	-	-	-	-	-	-	-

### Coefficient of performance (C.O.P.)

10	3.38	5.28	6.68	8.72	12.08	18.84	-	-	-
20	2.44	3.93	4.85	5.99	7.51	9.72	13.31	-	-
30	1.62	2.86	3.58	4.38	5.33	6.53	8.12	14.15	-
40	0.95	1.95	2.52	3.15	3.85	4.65	5.61	8.43	10.76
45	-	1.55	2.06	2.61	3.23	3.91	4.70	6.86	8.47
50	-	1.19	1.64	2.13	2.67	3.26	3.93	5.66	6.85
60	-	-	0.95	1.31	1.71	2.16	2.66	3.86	4.60
65	-	-	-	-	-	-	-	-	-

### Nominal performance at to = 7.2 °C, tc = 54.4 °C

Cooling capacity	28 419	W
Power input	9 480	W
Current consumption	15.30	A
Mass flow	649	kg/h
C.O.P.	3.00	

### Pressure switch settings

Maximum HP switch setting	43.7	bar(g)
Minimum LP switch setting	1.5	bar(g)
LP pump down setting	1.5	bar(g)

### Sound power data

Sound power level		dB(A)
With accoustic hood		dB(A)

to: Evaporating temperature at dew point

tc: Condensing temperature at dew point

Rating conditions : Superheat = 11.1 K , Subcooling = 8.3 K

Tolerance according EN12900

Danfoss can accept no responsibility for possible errors in catalogues, brochures and other printed material. Danfoss reserves the right to alter its products without notice. This also applies to products already on order provided that such alterations can be made without subsequential changes being necessary in specifications already agreed. All trademarks in this material are property of the respective companies. Danfoss and the Danfoss logotype are trademarks of Danfoss A/S. All rights reserved.



**Performance data at 90 Hz, EN 12900 rating conditions**
**R410A**

Cond. temp. in °C (tc)	Evaporating temperature in °C (to)								
	-25	-15	-10	-5	0	5	10	20	25

**Cooling capacity in W**

10	12 811	19 848	24 237	29 297	35 095	41 698	-	-	-
20	11 270	18 237	22 523	27 433	33 034	39 391	46 574	-	-
30	9 326	16 036	20 124	24 788	30 095	36 112	42 903	59 080	-
40	7 101	13 363	17 156	21 478	26 394	31 969	38 270	53 308	62 176
45	-	11 886	15 495	19 608	24 290	29 606	35 620	50 006	58 507
50	-	10 336	13 734	17 611	22 031	27 059	32 759	46 431	54 531
60	-	-	9 948	13 258	17 056	21 404	26 363	38 366	45 533
65	-	-	-	-	-	-	-	-	-

**Power input in W**

10	4 090	4 067	3 937	3 663	3 197	2 490	-	-	-
20	4 979	5 023	5 033	4 972	4 790	4 440	3 871	-	-
30	6 187	6 074	6 115	6 155	6 146	6 040	5 789	4 655	-
40	7 969	7 477	7 435	7 465	7 519	7 547	7 501	6 993	6 435
45	-	8 389	8 265	8 248	8 291	8 344	8 359	8 082	7 692
50	-	9 484	9 250	9 159	9 163	9 213	9 262	9 158	8 909
60	-	-	11 812	11 488	11 332	11 294	11 325	11 403	11 353
65	-	-	-	-	-	-	-	-	-

**Current consumption in A**

10	8.16	8.11	7.97	7.66	7.08	6.16	-	-	-
20	9.13	8.91	8.90	8.85	8.68	8.30	7.63	-	-
30	11.31	10.47	10.35	10.34	10.34	10.27	10.05	8.86	-
40	15.00	13.07	12.63	12.42	12.36	12.38	12.38	12.05	11.55
45	-	14.87	14.17	13.77	13.60	13.58	13.61	13.54	13.27
50	-	17.03	16.03	15.39	15.05	14.92	14.93	15.00	14.91
60	-	-	20.85	19.57	18.72	18.22	17.98	18.01	18.10
65	-	-	-	-	-	-	-	-	-

**Mass flow in kg/h**

10	225	342	412	493	584	687	-	-	-
20	214	339	413	497	592	700	821	-	-
30	195	325	403	490	589	700	825	1 122	-
40	166	301	381	471	572	686	814	1 117	1 294
45	-	284	365	456	559	674	803	1 108	1 287
50	-	264	346	438	542	658	788	1 095	1 275
60	-	-	298	391	496	613	745	1 056	1 238
65	-	-	-	-	-	-	-	-	-

**Coefficient of performance (C.O.P.)**

10	3.13	4.88	6.16	8.00	10.98	16.75	-	-	-
20	2.26	3.63	4.47	5.52	6.90	8.87	12.03	-	-
30	1.51	2.64	3.29	4.03	4.90	5.98	7.41	12.69	-
40	0.89	1.79	2.31	2.88	3.51	4.24	5.10	7.62	9.66
45	-	1.42	1.87	2.38	2.93	3.55	4.26	6.19	7.61
50	-	1.09	1.48	1.92	2.40	2.94	3.54	5.07	6.12
60	-	-	0.84	1.15	1.51	1.90	2.33	3.36	4.01
65	-	-	-	-	-	-	-	-	-

**Nominal performance at to = 5 °C, tc = 50 °C**

Cooling capacity	27 059	W
Power input	9 213	W
Current consumption	14.92	A
Mass flow	658	kg/h
C.O.P.	2.94	

**Pressure switch settings**

Maximum HP switch setting	43.7	bar(g)
Minimum LP switch setting	1.5	bar(g)
LP pump down setting	1.5	bar(g)

**Sound power data**

Sound power level	85	dB(A)
With acoustic hood	76	dB(A)

to: Evaporating temperature at dew point

tc: Condensing temperature at dew point

Rating conditions : Superheat = 10 K , Subcooling = 0 K

Tolerance according EN12900

Danfoss can accept no responsibility for possible errors in catalogues, brochures and other printed material. Danfoss reserves the right to alter its products without notice. This also applies to products already on order provided that such alterations can be made without subsequential changes being necessary in specifications already agreed. All trademarks in this material are property of the respective companies. Danfoss and the Danfoss logotype are trademarks of Danfoss A/S. All rights reserved.

# Datasheet, performance data

# Danfoss scroll compressor. VZH065CG

## Performance data at 90 Hz, ARI rating conditions

## R410A

Cond. temp. in °C (tc)	Evaporating temperature in °C (to)								
	-25	-15	-10	-5	0	5	10	20	25

### Cooling capacity in W

10	13 589	21 023	25 655	30 991	37 101	44 055	-	-	-
20	12 047	19 462	24 017	29 230	35 173	41 913	49 523	-	-
30	10 071	17 282	21 667	26 665	32 346	38 780	46 039	63 306	-
40	7 779	14 599	18 721	23 411	28 738	34 774	41 588	57 831	67 400
45	-	13 106	17 062	21 562	26 678	32 479	39 036	54 697	63 942
50	-	11 531	15 297	19 585	24 466	30 010	36 287	51 320	60 216
60	-	-	11 511	15 306	19 647	24 606	30 253	43 890	52 021
65	-	-	-	-	-	-	-	-	-

### Power input in W

10	4 090	4 067	3 937	3 663	3 197	2 490	-	-	-
20	4 979	5 023	5 033	4 972	4 790	4 440	3 871	-	-
30	6 187	6 074	6 115	6 155	6 146	6 040	5 789	4 655	-
40	7 969	7 477	7 435	7 465	7 519	7 547	7 501	6 993	6 435
45	-	8 389	8 265	8 248	8 291	8 344	8 359	8 082	7 692
50	-	9 484	9 250	9 159	9 163	9 213	9 262	9 158	8 909
60	-	-	11 812	11 488	11 332	11 294	11 325	11 403	11 353
65	-	-	-	-	-	-	-	-	-

### Current consumption in A

10	8.16	8.11	7.97	7.66	7.08	6.16	-	-	-
20	9.13	8.91	8.90	8.85	8.68	8.30	7.63	-	-
30	11.31	10.47	10.35	10.34	10.34	10.27	10.05	8.86	-
40	15.00	13.07	12.63	12.42	12.36	12.38	12.38	12.05	11.55
45	-	14.87	14.17	13.77	13.60	13.58	13.61	13.54	13.27
50	-	17.03	16.03	15.39	15.05	14.92	14.93	15.00	14.91
60	-	-	20.85	19.57	18.72	18.22	17.98	18.01	18.10
65	-	-	-	-	-	-	-	-	-

### Mass flow in kg/h

10	224	340	410	489	580	682	-	-	-
20	213	337	410	494	588	695	815	-	-
30	194	323	400	487	585	695	819	1 113	-
40	165	299	379	468	569	682	808	1 108	1 283
45	-	282	363	453	555	669	797	1 099	1 276
50	-	263	344	435	538	653	782	1 087	1 265
60	-	-	296	388	492	609	740	1 047	1 227
65	-	-	-	-	-	-	-	-	-

### Coefficient of performance (C.O.P.)

10	3.32	5.17	6.52	8.46	11.60	17.69	-	-	-
20	2.42	3.87	4.77	5.88	7.34	9.44	12.79	-	-
30	1.63	2.85	3.54	4.33	5.26	6.42	7.95	13.60	-
40	0.98	1.95	2.52	3.14	3.82	4.61	5.54	8.27	10.47
45	-	1.56	2.06	2.61	3.22	3.89	4.67	6.77	8.31
50	-	1.22	1.65	2.14	2.67	3.26	3.92	5.60	6.76
60	-	-	0.97	1.33	1.73	2.18	2.67	3.85	4.58
65	-	-	-	-	-	-	-	-	-

### Nominal performance at to = 7.2 °C, tc = 54.4 °C

Cooling capacity	30 257	W
Power input	10 086	W
Current consumption	16.21	A
Mass flow	691	kg/h
C.O.P.	3.00	

### Pressure switch settings

Maximum HP switch setting	43.7	bar(g)
Minimum LP switch setting	1.5	bar(g)
LP pump down setting	1.5	bar(g)

### Sound power data

Sound power level	85	dB(A)
With acoustic hood	76	dB(A)

to: Evaporating temperature at dew point

tc: Condensing temperature at dew point

Rating conditions : Superheat = 11.1 K , Subcooling = 8.3 K

Tolerance according EN12900

Danfoss can accept no responsibility for possible errors in catalogues, brochures and other printed material. Danfoss reserves the right to alter its products without notice. This also applies to products already on order provided that such alterations can be made without subsequential changes being necessary in specifications already agreed. All trademarks in this material are property of the respective companies. Danfoss and the Danfoss logotype are trademarks of Danfoss A/S. All rights reserved.

# Datasheet, performance data

# Danfoss scroll compressor. VZH065CG

## Performance data at 95 Hz, EN 12900 rating conditions

# R410A

Cond. temp. in °C (tc)	Evaporating temperature in °C (to)								
	-25	-15	-10	-5	0	5	10	20	25

### Cooling capacity in W

10	13 505	20 896	25 520	30 859	36 987	43 974	-	-	-
20	11 932	19 233	23 736	28 903	34 808	41 521	49 115	-	-
30	9 957	16 976	21 262	26 162	31 746	38 086	45 254	62 360	-
40	7 698	14 241	18 213	22 746	27 911	33 778	40 417	56 297	65 678
45	-	12 730	16 507	20 819	25 735	31 325	37 659	52 841	61 828
50	-	11 141	14 696	18 759	23 398	28 683	34 683	49 103	57 663
60	-	-	10 793	14 260	18 244	22 811	28 028	40 679	48 246
65	-	-	-	-	-	-	-	-	-

### Power input in W

10	4 389	4 374	4 248	3 976	3 506	2 790	-	-	-
20	5 326	5 374	5 391	5 338	5 163	4 815	4 246	-	-
30	6 601	6 477	6 522	6 570	6 572	6 477	6 235	5 108	-
40	8 484	7 954	7 908	7 942	8 003	8 044	8 012	7 531	6 981
45	-	8 917	8 782	8 764	8 812	8 875	8 905	8 659	8 283
50	-	10 073	9 820	9 721	9 726	9 784	9 846	9 777	9 545
60	-	-	12 526	12 178	12 009	11 968	12 006	12 115	12 085
65	-	-	-	-	-	-	-	-	-

### Current consumption in A

10	8.80	8.59	8.40	8.05	7.46	6.55	-	-	-
20	9.81	9.51	9.47	9.41	9.23	8.85	8.21	-	-
30	11.93	11.10	10.99	10.98	10.99	10.94	10.75	9.61	-
40	15.48	13.68	13.28	13.12	13.10	13.15	13.18	12.90	12.42
45	-	15.45	14.82	14.49	14.38	14.39	14.46	14.44	14.19
50	-	17.58	16.68	16.13	15.86	15.79	15.84	15.97	15.89
60	-	-	21.50	20.35	19.61	19.20	19.04	19.14	19.25
65	-	-	-	-	-	-	-	-	-

### Mass flow in kg/h

10	237	360	434	519	615	725	-	-	-
20	227	357	435	524	624	738	866	-	-
30	208	344	426	517	621	738	870	1 184	-
40	180	321	404	499	605	725	860	1 180	1 367
45	-	304	389	485	592	713	849	1 171	1 360
50	-	285	370	467	575	697	834	1 158	1 349
60	-	-	323	420	530	654	792	1 120	1 312
65	-	-	-	-	-	-	-	-	-

### Coefficient of performance (C.O.P.)

10	3.08	4.78	6.01	7.76	10.55	15.76	-	-	-
20	2.24	3.58	4.40	5.41	6.74	8.62	11.57	-	-
30	1.51	2.62	3.26	3.98	4.83	5.88	7.26	12.21	-
40	0.91	1.79	2.30	2.86	3.49	4.20	5.04	7.48	9.41
45	-	1.43	1.88	2.38	2.92	3.53	4.23	6.10	7.46
50	-	1.11	1.50	1.93	2.41	2.93	3.52	5.02	6.04
60	-	-	0.86	1.17	1.52	1.91	2.33	3.36	3.99
65	-	-	-	-	-	-	-	-	-

### Nominal performance at to = 5 °C, tc = 50 °C

Cooling capacity	28 683	W
Power input	9 784	W
Current consumption	15.79	A
Mass flow	697	kg/h
C.O.P.	2.93	

### Pressure switch settings

Maximum HP switch setting	43.7	bar(g)
Minimum LP switch setting	1.5	bar(g)
LP pump down setting	1.5	bar(g)

### Sound power data

Sound power level		dB(A)
With accoustic hood		dB(A)

to: Evaporating temperature at dew point

tc: Condensing temperature at dew point

Rating conditions : Superheat = 10 K , Subcooling = 0 K

Tolerance according EN12900

Danfoss can accept no responsibility for possible errors in catalogues, brochures and other printed material. Danfoss reserves the right to alter its products without notice. This also applies to products already on order provided that such alterations can be made without subsequential changes being necessary in specifications already agreed. All trademarks in this material are property of the respective companies. Danfoss and the Danfoss logotype are trademarks of Danfoss A/S. All rights reserved.

# Datasheet, performance data

# Danfoss scroll compressor. VZH065CG

## Performance data at 95 Hz, ARI rating conditions

## R410A

Cond. temp. in °C (tc)	Evaporating temperature in °C (to)								
	-25	-15	-10	-5	0	5	10	20	25

### Cooling capacity in W

10	14 324	22 133	27 013	32 644	39 101	46 460	-	-	-
20	12 755	20 524	25 310	30 797	37 062	44 179	52 224	-	-
30	10 753	18 295	22 893	28 143	34 120	40 901	48 561	66 821	-
40	8 433	15 559	19 875	24 793	30 390	36 741	43 921	61 073	71 196
45	-	14 036	18 176	22 893	28 265	34 365	41 270	57 798	67 572
50	-	12 429	16 369	20 862	25 984	31 811	38 417	54 274	63 675
60	-	-	12 489	16 462	21 015	26 224	32 163	46 536	55 121
65	-	-	-	-	-	-	-	-	-

### Power input in W

10	4 389	4 374	4 248	3 976	3 506	2 790	-	-	-
20	5 326	5 374	5 391	5 338	5 163	4 815	4 246	-	-
30	6 601	6 477	6 522	6 570	6 572	6 477	6 235	5 108	-
40	8 484	7 954	7 908	7 942	8 003	8 044	8 012	7 531	6 981
45	-	8 917	8 782	8 764	8 812	8 875	8 905	8 659	8 283
50	-	10 073	9 820	9 721	9 726	9 784	9 846	9 777	9 545
60	-	-	12 526	12 178	12 009	11 968	12 006	12 115	12 085
65	-	-	-	-	-	-	-	-	-

### Current consumption in A

10	8.80	8.59	8.40	8.05	7.46	6.55	-	-	-
20	9.81	9.51	9.47	9.41	9.23	8.85	8.21	-	-
30	11.93	11.10	10.99	10.98	10.99	10.94	10.75	9.61	-
40	15.48	13.68	13.28	13.12	13.10	13.15	13.18	12.90	12.42
45	-	15.45	14.82	14.49	14.38	14.39	14.46	14.44	14.19
50	-	17.58	16.68	16.13	15.86	15.79	15.84	15.97	15.89
60	-	-	21.50	20.35	19.61	19.20	19.04	19.14	19.25
65	-	-	-	-	-	-	-	-	-

### Mass flow in kg/h

10	236	358	432	516	611	720	-	-	-
20	226	355	433	520	620	733	860	-	-
30	207	342	423	514	617	733	864	1 174	-
40	179	319	402	496	601	720	854	1 170	1 356
45	-	302	387	481	588	708	843	1 162	1 349
50	-	283	368	464	571	692	828	1 149	1 337
60	-	-	321	418	527	649	786	1 111	1 300
65	-	-	-	-	-	-	-	-	-

### Coefficient of performance (C.O.P.)

10	3.26	5.06	6.36	8.21	11.15	16.65	-	-	-
20	2.39	3.82	4.69	5.77	7.18	9.17	12.30	-	-
30	1.63	2.82	3.51	4.28	5.19	6.31	7.79	13.08	-
40	0.99	1.96	2.51	3.12	3.80	4.57	5.48	8.11	10.20
45	-	1.57	2.07	2.61	3.21	3.87	4.63	6.67	8.16
50	-	1.23	1.67	2.15	2.67	3.25	3.90	5.55	6.67
60	-	-	1.00	1.35	1.75	2.19	2.68	3.84	4.56
65	-	-	-	-	-	-	-	-	-

### Nominal performance at to = 7.2 °C, tc = 54.4 °C

Cooling capacity	32 112	W
Power input	10 702	W
Current consumption	17.15	A
Mass flow	734	kg/h
C.O.P.	3.00	

### Pressure switch settings

Maximum HP switch setting	43.7	bar(g)
Minimum LP switch setting	1.5	bar(g)
LP pump down setting	1.5	bar(g)

### Sound power data

Sound power level		dB(A)
With accoustic hood		dB(A)

to: Evaporating temperature at dew point

tc: Condensing temperature at dew point

Rating conditions : Superheat = 11.1 K , Subcooling = 8.3 K

Tolerance according EN12900

Danfoss can accept no responsibility for possible errors in catalogues, brochures and other printed material. Danfoss reserves the right to alter its products without notice. This also applies to products already on order provided that such alterations can be made without subsequential changes being necessary in specifications already agreed. All trademarks in this material are property of the respective companies. Danfoss and the Danfoss logotype are trademarks of Danfoss A/S. All rights reserved.

# Datasheet, performance data

# Danfoss scroll compressor. VZH065CG

## Performance data at 100 Hz, EN 12900 rating conditions

## R410A

Cond. temp. in °C (tc)	Evaporating temperature in °C (to)								
	-25	-15	-10	-5	0	5	10	20	25

### Cooling capacity in W

10	14 196	21 939	26 796	32 413	38 868	46 240	-	-	-
20	12 594	20 224	24 943	30 367	36 573	43 639	51 644	-	-
30	10 591	17 916	22 400	27 533	33 393	40 055	47 598	65 631	-
40	8 300	15 124	19 275	24 018	29 431	35 588	42 565	59 285	69 179
45	-	13 581	17 526	22 036	27 185	33 049	39 703	55 680	65 154
50	-	11 955	15 669	19 918	24 775	30 317	36 616	51 786	60 806
60	-	-	11 652	15 279	19 450	24 237	29 712	43 014	50 984
65	-	-	-	-	-	-	-	-	-

### Power input in W

10	4 695	4 691	4 570	4 301	3 832	3 110	-	-	-
20	5 680	5 733	5 758	5 714	5 548	5 207	4 640	-	-
30	7 025	6 888	6 937	6 994	7 008	6 925	6 696	5 585	-
40	9 015	8 442	8 391	8 426	8 497	8 550	8 534	8 086	7 550
45	-	9 458	9 310	9 289	9 341	9 416	9 461	9 252	8 895
50	-	10 680	10 405	10 296	10 300	10 365	10 440	10 409	10 199
60	-	-	13 265	12 888	12 702	12 657	12 699	12 839	12 832
65	-	-	-	-	-	-	-	-	-

### Current consumption in A

10	9.47	9.07	8.82	8.43	7.83	6.93	-	-	-
20	10.51	10.12	10.06	9.97	9.78	9.42	8.80	-	-
30	12.54	11.74	11.64	11.65	11.67	11.64	11.46	10.40	-
40	15.90	14.27	13.94	13.83	13.85	13.94	14.01	13.78	13.33
45	-	15.99	15.47	15.22	15.16	15.23	15.34	15.37	15.14
50	-	18.07	17.30	16.86	16.68	16.68	16.78	16.97	16.90
60	-	-	22.07	21.10	20.50	20.21	20.13	20.32	20.43
65	-	-	-	-	-	-	-	-	-

### Mass flow in kg/h

10	249	378	456	545	647	762	-	-	-
20	240	376	457	550	656	776	911	-	-
30	221	363	448	545	653	777	915	1 246	-
40	194	341	428	527	638	764	906	1 242	1 440
45	-	325	413	513	626	752	895	1 234	1 433
50	-	306	395	496	609	737	881	1 222	1 422
60	-	-	349	450	565	695	840	1 184	1 386
65	-	-	-	-	-	-	-	-	-

### Coefficient of performance (C.O.P.)

10	3.02	4.68	5.86	7.54	10.14	14.87	-	-	-
20	2.22	3.53	4.33	5.31	6.59	8.38	11.13	-	-
30	1.51	2.60	3.23	3.94	4.77	5.78	7.11	11.75	-
40	0.92	1.79	2.30	2.85	3.46	4.16	4.99	7.33	9.16
45	-	1.44	1.88	2.37	2.91	3.51	4.20	6.02	7.33
50	-	1.12	1.51	1.93	2.41	2.92	3.51	4.98	5.96
60	-	-	0.88	1.19	1.53	1.91	2.34	3.35	3.97
65	-	-	-	-	-	-	-	-	-

### Nominal performance at to = 5 °C, tc = 50 °C

Cooling capacity	30 317	W
Power input	10 365	W
Current consumption	16.68	A
Mass flow	737	kg/h
C.O.P.	2.92	

### Pressure switch settings

Maximum HP switch setting	43.7	bar(g)
Minimum LP switch setting	1.5	bar(g)
LP pump down setting	1.5	bar(g)

### Sound power data

Sound power level		dB(A)
With accoustic hood		dB(A)

to: Evaporating temperature at dew point

tc: Condensing temperature at dew point

Rating conditions : Superheat = 10 K , Subcooling = 0 K

Tolerance according EN12900

Danfoss can accept no responsibility for possible errors in catalogues, brochures and other printed material. Danfoss reserves the right to alter its products without notice. This also applies to products already on order provided that such alterations can be made without subsequential changes being necessary in specifications already agreed. All trademarks in this material are property of the respective companies. Danfoss and the Danfoss logotype are trademarks of Danfoss A/S. All rights reserved.

**Performance data at 100 Hz, ARI rating conditions**
**R410A**

Cond. temp. in °C (tc)	Evaporating temperature in °C (to)							
	-25	-15	-10	-5	0	5	10	20

**Cooling capacity in W**

10	15 058	23 238	28 363	34 287	41 090	48 853	-	-	-
20	13 462	21 582	26 597	32 356	38 941	46 433	54 913	-	-
30	11 437	19 308	24 118	29 618	35 890	43 016	51 076	70 326	-
40	9 092	16 524	21 033	26 180	32 045	38 709	46 255	64 315	74 991
45	-	14 974	19 298	24 232	29 858	36 257	43 510	60 903	71 206
50	-	13 338	17 452	22 151	27 514	33 623	40 559	57 239	67 145
60	-	-	13 483	17 639	22 405	27 864	34 096	49 207	58 248
65	-	-	-	-	-	-	-	-	-

**Power input in W**

10	4 695	4 691	4 570	4 301	3 832	3 110	-	-	-
20	5 680	5 733	5 758	5 714	5 548	5 207	4 640	-	-
30	7 025	6 888	6 937	6 994	7 008	6 925	6 696	5 585	-
40	9 015	8 442	8 391	8 426	8 497	8 550	8 534	8 086	7 550
45	-	9 458	9 310	9 289	9 341	9 416	9 461	9 252	8 895
50	-	10 680	10 405	10 296	10 300	10 365	10 440	10 409	10 199
60	-	-	13 265	12 888	12 702	12 657	12 699	12 839	12 832
65	-	-	-	-	-	-	-	-	-

**Current consumption in A**

10	9.47	9.07	8.82	8.43	7.83	6.93	-	-	-
20	10.51	10.12	10.06	9.97	9.78	9.42	8.80	-	-
30	12.54	11.74	11.64	11.65	11.67	11.64	11.46	10.40	-
40	15.90	14.27	13.94	13.83	13.85	13.94	14.01	13.78	13.33
45	-	15.99	15.47	15.22	15.16	15.23	15.34	15.37	15.14
50	-	18.07	17.30	16.86	16.68	16.68	16.78	16.97	16.90
60	-	-	22.07	21.10	20.50	20.21	20.13	20.32	20.43
65	-	-	-	-	-	-	-	-	-

**Mass flow in kg/h**

10	248	376	453	541	642	757	-	-	-
20	238	373	455	547	652	770	904	-	-
30	220	361	446	541	649	771	909	1 236	-
40	193	338	425	523	634	759	899	1 232	1 428
45	-	323	411	510	621	747	889	1 224	1 421
50	-	304	393	493	605	732	874	1 212	1 410
60	-	-	346	448	562	690	834	1 175	1 374
65	-	-	-	-	-	-	-	-	-

**Coefficient of performance (C.O.P.)**

10	3.21	4.95	6.21	7.97	10.72	15.71	-	-	-
20	2.37	3.76	4.62	5.66	7.02	8.92	11.83	-	-
30	1.63	2.80	3.48	4.23	5.12	6.21	7.63	12.59	-
40	1.01	1.96	2.51	3.11	3.77	4.53	5.42	7.95	9.93
45	-	1.58	2.07	2.61	3.20	3.85	4.60	6.58	8.01
50	-	1.25	1.68	2.15	2.67	3.24	3.88	5.50	6.58
60	-	-	1.02	1.37	1.76	2.20	2.68	3.83	4.54
65	-	-	-	-	-	-	-	-	-

**Nominal performance at to = 7.2 °C, tc = 54.4 °C**

Cooling capacity	33 982	W
Power input	11 329	W
Current consumption	18.12	A
Mass flow	776	kg/h
C.O.P.	3.00	

**Pressure switch settings**

Maximum HP switch setting	43.7	bar(g)
Minimum LP switch setting	1.5	bar(g)
LP pump down setting	1.5	bar(g)

**Sound power data**

Sound power level		dB(A)
With accoustic hood		dB(A)

to: Evaporating temperature at dew point

tc: Condensing temperature at dew point

Rating conditions : Superheat = 11.1 K , Subcooling = 8.3 K

Tolerance according EN12900

Danfoss can accept no responsibility for possible errors in catalogues, brochures and other printed material. Danfoss reserves the right to alter its products without notice. This also applies to products already on order provided that such alterations can be made without subsequential changes being necessary in specifications already agreed. All trademarks in this material are property of the respective companies. Danfoss and the Danfoss logotype are trademarks of Danfoss A/S. All rights reserved.

**Performance data at 105 Hz, EN 12900 rating conditions**
**R410A**

Cond. temp. in °C (tc)	Evaporating temperature in °C (to)								
	-25	-15	-10	-5	0	5	10	20	25

**Cooling capacity in W**

10	14 885	22 977	28 065	33 957	40 739	48 494	-	-	-
20	13 255	21 213	26 145	31 823	38 329	45 748	54 161	-	-
30	-	18 857	23 536	28 902	35 035	42 018	49 934	-	-
40	-	16 013	20 341	25 294	30 953	37 399	44 713	-	-
45	-	-	18 553	23 261	28 643	34 779	41 751	-	-
50	-	-	-	21 087	26 163	31 961	38 559	-	-
60	-	-	-	-	-	-	-	-	-
65	-	-	-	-	-	-	-	-	-

**Power input in W**

10	5 010	5 017	4 904	4 641	4 174	3 449	-	-	-
20	6 043	6 100	6 135	6 101	5 945	5 614	5 054	-	-
30	-	7 308	7 360	7 426	7 453	7 386	7 171	-	-
40	-	8 941	8 883	8 920	8 999	9 066	9 068	-	-
45	-	-	9 850	9 823	9 880	9 966	10 027	-	-
50	-	-	-	10 882	10 884	10 956	11 045	-	-
60	-	-	-	-	-	-	-	-	-
65	-	-	-	-	-	-	-	-	-

**Current consumption in A**

10	10.16	9.55	9.23	8.80	8.18	7.30	-	-	-
20	11.24	10.75	10.65	10.54	10.34	9.99	9.40	-	-
30	-	12.39	12.31	12.33	12.36	12.35	12.20	-	-
40	-	14.85	14.60	14.55	14.63	14.75	14.85	-	-
45	-	-	16.10	15.95	15.97	16.09	16.25	-	-
50	-	-	-	17.59	17.51	17.59	17.74	-	-
60	-	-	-	-	-	-	-	-	-
65	-	-	-	-	-	-	-	-	-

**Mass flow in kg/h**

10	261	396	478	571	678	799	-	-	-
20	252	394	479	577	687	813	955	-	-
30	-	383	471	572	686	815	960	-	-
40	-	361	452	555	671	803	951	-	-
45	-	-	437	541	659	792	941	-	-
50	-	-	-	525	643	777	928	-	-
60	-	-	-	-	-	-	-	-	-
65	-	-	-	-	-	-	-	-	-

**Coefficient of performance (C.O.P.)**

10	2.97	4.58	5.72	7.32	9.76	14.06	-	-	-
20	2.19	3.48	4.26	5.22	6.45	8.15	10.72	-	-
30	-	2.58	3.20	3.89	4.70	5.69	6.96	-	-
40	-	1.79	2.29	2.84	3.44	4.13	4.93	-	-
45	-	-	1.88	2.37	2.90	3.49	4.16	-	-
50	-	-	-	1.94	2.40	2.92	3.49	-	-
60	-	-	-	-	-	-	-	-	-
65	-	-	-	-	-	-	-	-	-

**Nominal performance at to = 5 °C, tc = 50 °C**

Cooling capacity	31 961	W
Power input	10 956	W
Current consumption	17.59	A
Mass flow	777	kg/h
C.O.P.	2.92	

**Pressure switch settings**

Maximum HP switch setting	43.7	bar(g)
Minimum LP switch setting	1.5	bar(g)
LP pump down setting	1.5	bar(g)

**Sound power data**

Sound power level		dB(A)
With accoustic hood		dB(A)

to: Evaporating temperature at dew point

tc: Condensing temperature at dew point

Rating conditions : Superheat = 10 K , Subcooling = 0 K

Tolerance according EN12900

Danfoss can accept no responsibility for possible errors in catalogues, brochures and other printed material. Danfoss reserves the right to alter its products without notice. This also applies to products already on order provided that such alternations can be made without subsequential changes being necessary in specifications already agreed. All trademarks in this material are property of the respective companies. Danfoss and the Danfoss logotype are trademarks of Danfoss A/S. All rights reserved.

**Performance data at 105 Hz, ARI rating conditions**
**R410A**

Cond. temp. in °C (tc)	Evaporating temperature in °C (to)								
	-25	-15	-10	-5	0	5	10	20	25

**Cooling capacity in W**

10	15 788	24 337	29 706	35 921	43 068	51 235	-	-	-
20	14 169	22 637	27 879	33 907	40 811	48 676	57 590	-	-
30	-	20 322	25 341	31 090	37 655	45 124	53 583	-	-
40	-	17 495	22 197	27 570	33 702	40 679	48 589	-	-
45	-	-	20 429	25 579	31 459	38 155	45 755	-	-
50	-	-	-	23 451	29 055	35 446	42 712	-	-
60	-	-	-	-	-	-	-	-	-
65	-	-	-	-	-	-	-	-	-

**Power input in W**

10	5 010	5 017	4 904	4 641	4 174	3 449	-	-	-
20	6 043	6 100	6 135	6 101	5 945	5 614	5 054	-	-
30	-	7 308	7 360	7 426	7 453	7 386	7 171	-	-
40	-	8 941	8 883	8 920	8 999	9 066	9 068	-	-
45	-	-	9 850	9 823	9 880	9 966	10 027	-	-
50	-	-	-	10 882	10 884	10 956	11 045	-	-
60	-	-	-	-	-	-	-	-	-
65	-	-	-	-	-	-	-	-	-

**Current consumption in A**

10	10.16	9.55	9.23	8.80	8.18	7.30	-	-	-
20	11.24	10.75	10.65	10.54	10.34	9.99	9.40	-	-
30	-	12.39	12.31	12.33	12.36	12.35	12.20	-	-
40	-	14.85	14.60	14.55	14.63	14.75	14.85	-	-
45	-	-	16.10	15.95	15.97	16.09	16.25	-	-
50	-	-	-	17.59	17.51	17.59	17.74	-	-
60	-	-	-	-	-	-	-	-	-
65	-	-	-	-	-	-	-	-	-

**Mass flow in kg/h**

10	260	393	475	567	673	794	-	-	-
20	251	392	476	573	683	807	948	-	-
30	-	380	468	568	681	809	953	-	-
40	-	358	449	551	667	797	944	-	-
45	-	-	435	538	655	786	935	-	-
50	-	-	-	521	639	772	921	-	-
60	-	-	-	-	-	-	-	-	-
65	-	-	-	-	-	-	-	-	-

**Coefficient of performance (C.O.P.)**

10	3.15	4.85	6.06	7.74	10.32	14.85	-	-	-
20	2.34	3.71	4.54	5.56	6.86	8.67	11.39	-	-
30	-	2.78	3.44	4.19	5.05	6.11	7.47	-	-
40	-	1.96	2.50	3.09	3.75	4.49	5.36	-	-
45	-	-	2.07	2.60	3.18	3.83	4.56	-	-
50	-	-	-	2.16	2.67	3.24	3.87	-	-
60	-	-	-	-	-	-	-	-	-
65	-	-	-	-	-	-	-	-	-

**Nominal performance at to = 7.2 °C, tc = 54.4 °C**

Cooling capacity	-	W
Power input	-	W
Current consumption	-	A
Mass flow	-	kg/h
C.O.P.	-	

to: Evaporating temperature at dew point

tc: Condensing temperature at dew point

Rating conditions : Superheat = 11.1 K , Subcooling = 8.3 K

**Pressure switch settings**

Maximum HP switch setting	43.7	bar(g)
Minimum LP switch setting	1.5	bar(g)
LP pump down setting	1.5	bar(g)

**Sound power data**

Sound power level		dB(A)
With accoustic hood		dB(A)

Tolerance according EN12900

Danfoss can accept no responsibility for possible errors in catalogues, brochures and other printed material. Danfoss reserves the right to alter its products without notice. This also applies to products already on order provided that such alternations can be made without subsequential changes being necessary in specifications already agreed. All trademarks in this material are property of the respective companies. Danfoss and the Danfoss logotype are trademarks of Danfoss A/S. All rights reserved.



**Performance data at 110 Hz, EN 12900 rating conditions**
**R410A**

Cond. temp. in °C (tc)	Evaporating temperature in °C (to)								
	-25	-15	-10	-5	0	5	10	20	25

**Cooling capacity in W**

10	15 571	24 009	29 326	35 494	42 601	50 737	-	-	-
20	13 917	22 198	27 341	33 271	40 076	47 845	56 667	-	-
30	-	19 798	24 672	30 267	36 672	43 975	52 263	-	-
40	-	16 907	21 412	26 573	32 477	39 211	46 861	-	-
45	-	-	19 588	24 493	30 107	36 515	43 804	-	-
50	-	-	-	22 267	27 561	33 615	40 513	-	-
60	-	-	-	-	-	-	-	-	-
65	-	-	-	-	-	-	-	-	-

**Power input in W**

10	5 333	5 353	5 249	4 993	4 532	3 809	-	-	-
20	6 414	6 476	6 520	6 498	6 356	6 037	5 488	-	-
30	-	7 735	7 791	7 867	7 908	7 858	7 662	-	-
40	-	9 451	9 384	9 421	9 509	9 591	9 612	-	-
45	-	-	10 400	10 368	10 428	10 525	10 604	-	-
50	-	-	-	11 480	11 479	11 557	11 659	-	-
60	-	-	-	-	-	-	-	-	-
65	-	-	-	-	-	-	-	-	-

**Current consumption in A**

10	10.88	10.04	9.63	9.15	8.52	7.66	-	-	-
20	12.00	11.40	11.26	11.12	10.91	10.57	10.02	-	-
30	-	13.06	13.00	13.02	13.07	13.07	12.95	-	-
40	-	15.42	15.27	15.29	15.42	15.59	15.72	-	-
45	-	-	16.72	16.68	16.79	16.97	17.17	-	-
50	-	-	-	18.31	18.35	18.52	18.74	-	-
60	-	-	-	-	-	-	-	-	-
65	-	-	-	-	-	-	-	-	-

**Mass flow in kg/h**

10	273	414	499	597	709	836	-	-	-
20	265	412	501	603	719	850	1 000	-	-
30	-	402	494	599	718	852	1 005	-	-
40	-	381	475	583	704	842	997	-	-
45	-	-	462	570	693	831	988	-	-
50	-	-	-	554	678	817	975	-	-
60	-	-	-	-	-	-	-	-	-
65	-	-	-	-	-	-	-	-	-

**Coefficient of performance (C.O.P.)**

10	2.92	4.48	5.59	7.11	9.40	13.32	-	-	-
20	2.17	3.43	4.19	5.12	6.31	7.92	10.33	-	-
30	-	2.56	3.17	3.85	4.64	5.60	6.82	-	-
40	-	1.79	2.28	2.82	3.42	4.09	4.87	-	-
45	-	-	1.88	2.36	2.89	3.47	4.13	-	-
50	-	-	-	1.94	2.40	2.91	3.47	-	-
60	-	-	-	-	-	-	-	-	-
65	-	-	-	-	-	-	-	-	-

**Nominal performance at to = 5 °C, tc = 50 °C**

Cooling capacity	33 615	W
Power input	11 557	W
Current consumption	18.52	A
Mass flow	817	kg/h
C.O.P.	2.91	

**Pressure switch settings**

Maximum HP switch setting	43.7	bar(g)
Minimum LP switch setting	1.5	bar(g)
LP pump down setting	1.5	bar(g)

**Sound power data**

Sound power level		dB(A)
With accoustic hood		dB(A)

to: Evaporating temperature at dew point

tc: Condensing temperature at dew point

Rating conditions : Superheat = 10 K , Subcooling = 0 K

Tolerance according EN12900

Danfoss can accept no responsibility for possible errors in catalogues, brochures and other printed material. Danfoss reserves the right to alter its products without notice. This also applies to products already on order provided that such alternations can be made without subsequential changes being necessary in specifications already agreed. All trademarks in this material are property of the respective companies. Danfoss and the Danfoss logotype are trademarks of Danfoss A/S. All rights reserved.

**Performance data at 110 Hz, ARI rating conditions**
**R410A**

Cond. temp. in °C (tc)	Evaporating temperature in °C (to)								
	-25	-15	-10	-5	0	5	10	20	25

**Cooling capacity in W**

10	16 517	25 431	31 042	37 546	45 036	53 606	-	-	-
20	14 876	23 688	29 154	35 451	42 671	50 908	60 255	-	-
30	-	21 337	26 564	32 559	39 415	47 225	56 082	-	-
40	-	18 472	23 366	28 965	35 362	42 651	50 924	-	-
45	-	-	21 568	26 934	33 066	40 059	48 005	-	-
50	-	-	-	24 763	30 608	37 281	44 876	-	-
60	-	-	-	-	-	-	-	-	-
65	-	-	-	-	-	-	-	-	-

**Power input in W**

10	5 333	5 353	5 249	4 993	4 532	3 809	-	-	-
20	6 414	6 476	6 520	6 498	6 356	6 037	5 488	-	-
30	-	7 735	7 791	7 867	7 908	7 858	7 662	-	-
40	-	9 451	9 384	9 421	9 509	9 591	9 612	-	-
45	-	-	10 400	10 368	10 428	10 525	10 604	-	-
50	-	-	-	11 480	11 479	11 557	11 659	-	-
60	-	-	-	-	-	-	-	-	-
65	-	-	-	-	-	-	-	-	-

**Current consumption in A**

10	10.88	10.04	9.63	9.15	8.52	7.66	-	-	-
20	12.00	11.40	11.26	11.12	10.91	10.57	10.02	-	-
30	-	13.06	13.00	13.02	13.07	13.07	12.95	-	-
40	-	15.42	15.27	15.29	15.42	15.59	15.72	-	-
45	-	-	16.72	16.68	16.79	16.97	17.17	-	-
50	-	-	-	18.31	18.35	18.52	18.74	-	-
60	-	-	-	-	-	-	-	-	-
65	-	-	-	-	-	-	-	-	-

**Mass flow in kg/h**

10	272	411	496	593	704	831	-	-	-
20	263	410	498	599	714	844	992	-	-
30	-	399	491	595	713	847	998	-	-
40	-	378	472	579	700	836	990	-	-
45	-	-	459	566	688	826	981	-	-
50	-	-	-	551	673	812	968	-	-
60	-	-	-	-	-	-	-	-	-
65	-	-	-	-	-	-	-	-	-

**Coefficient of performance (C.O.P.)**

10	3.10	4.75	5.91	7.52	9.94	14.07	-	-	-
20	2.32	3.66	4.47	5.46	6.71	8.43	10.98	-	-
30	-	2.76	3.41	4.14	4.98	6.01	7.32	-	-
40	-	1.95	2.49	3.07	3.72	4.45	5.30	-	-
45	-	-	2.07	2.60	3.17	3.81	4.53	-	-
50	-	-	-	2.16	2.67	3.23	3.85	-	-
60	-	-	-	-	-	-	-	-	-
65	-	-	-	-	-	-	-	-	-

**Nominal performance at to = 7.2 °C, tc = 54.4 °C**

Cooling capacity	-	W
Power input	-	W
Current consumption	-	A
Mass flow	-	kg/h
C.O.P.	-	

to: Evaporating temperature at dew point

tc: Condensing temperature at dew point

Rating conditions : Superheat = 11.1 K , Subcooling = 8.3 K

**Pressure switch settings**

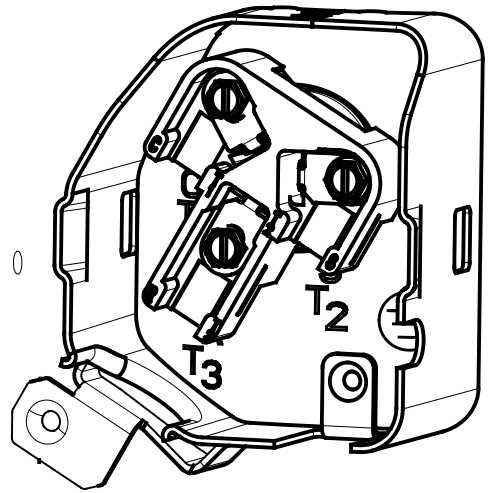
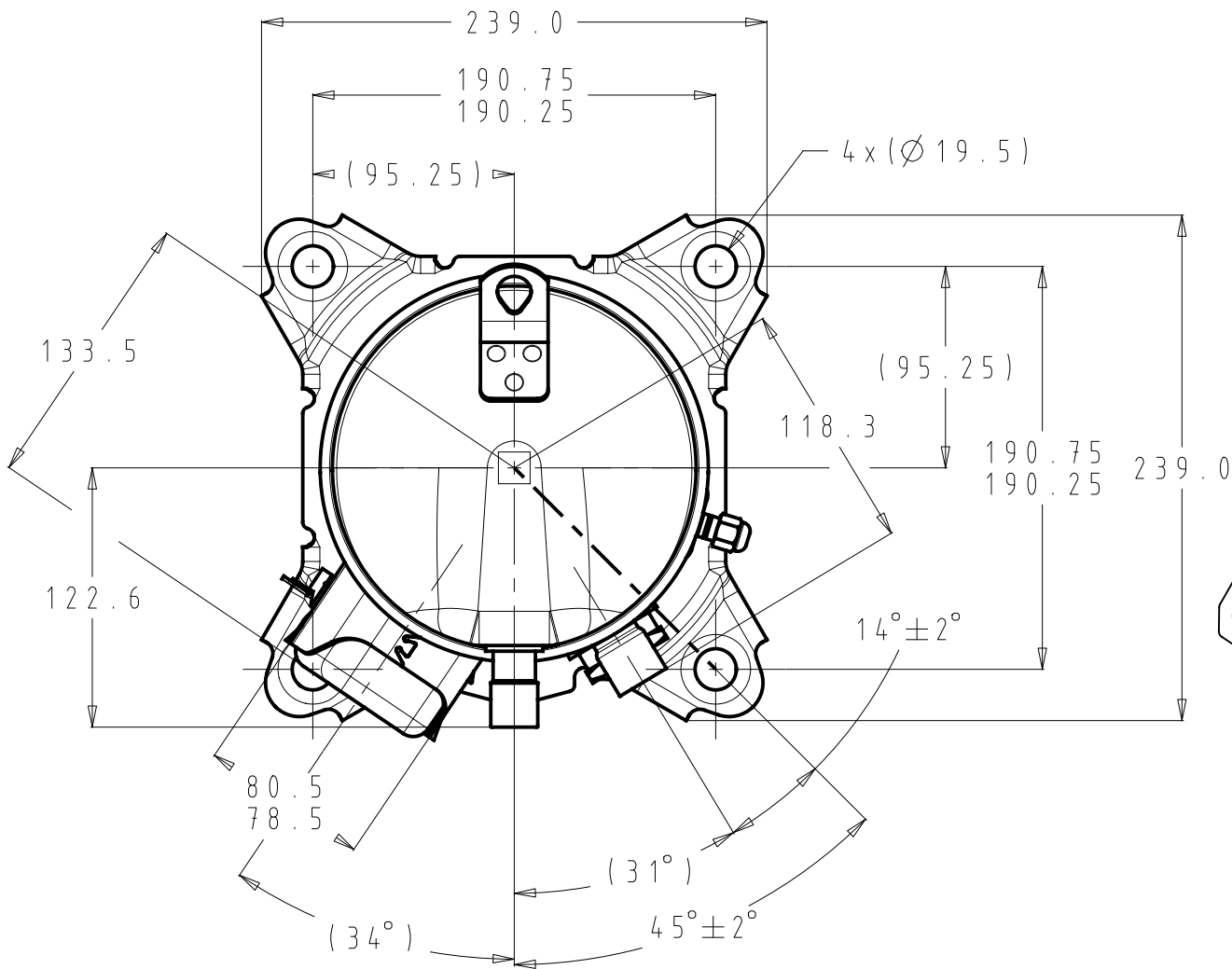
Maximum HP switch setting	43.7	bar(g)
Minimum LP switch setting	1.5	bar(g)
LP pump down setting	1.5	bar(g)

**Sound power data**

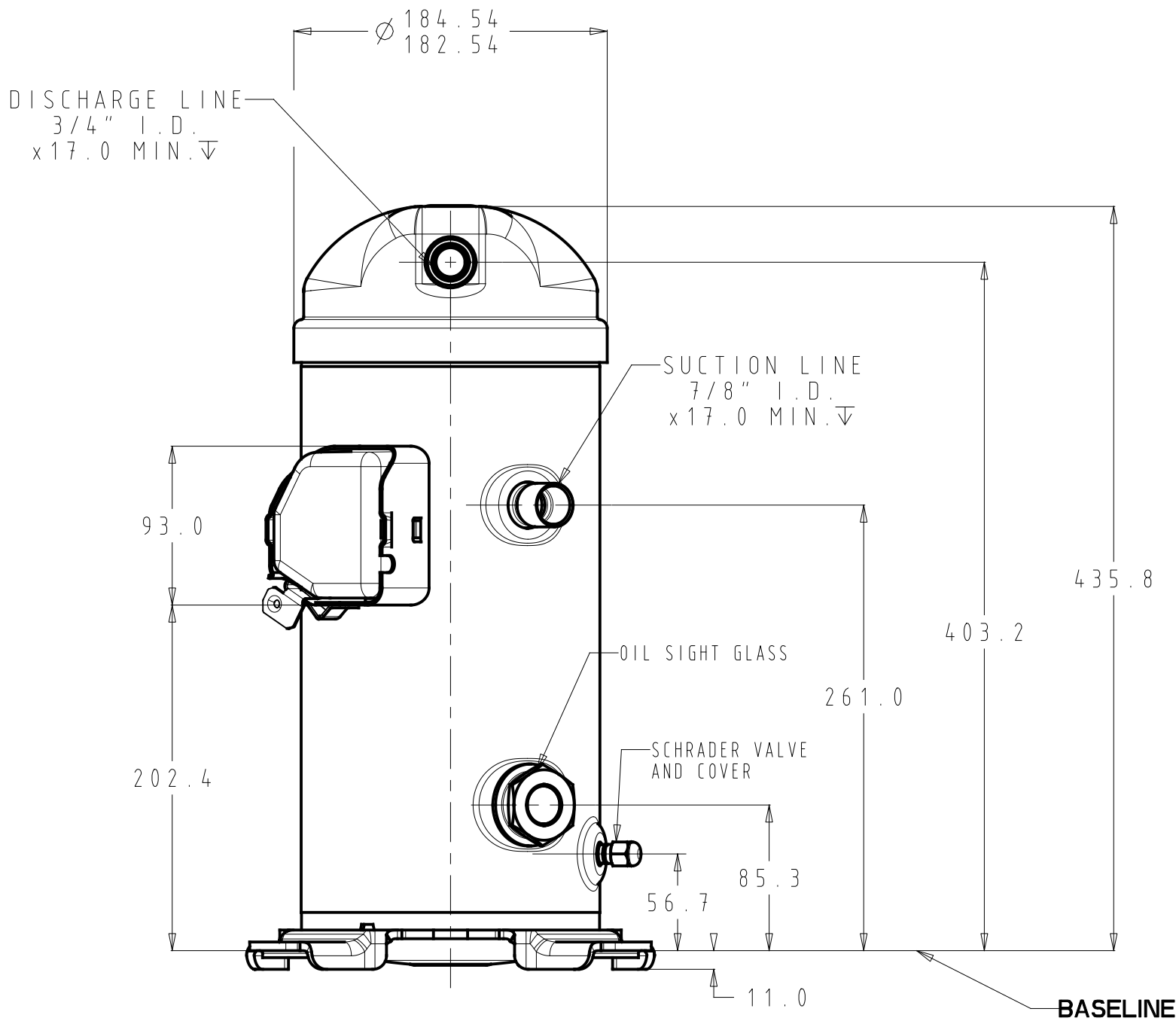
Sound power level		dB(A)
With accoustic hood		dB(A)

Tolerance according EN12900

Danfoss can accept no responsibility for possible errors in catalogues, brochures and other printed material. Danfoss reserves the right to alter its products without notice. This also applies to products already on order provided that such alternations can be made without subsequential changes being necessary in specifications already agreed. All trademarks in this material are property of the respective companies. Danfoss and the Danfoss logotype are trademarks of Danfoss A/S. All rights reserved.

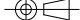




SCALE 3/5



Part number

8590007P01A

General Tolerances Table	Drawing Status:			Production print				
				Surface Area (m <sup>2</sup> )				
				Estimated Mass (Kg)				
				Projection	Scale	Size		
.X=±3.0 .XX=±N/A .XXX=±N/A ANG°=±N/A	C	ECR-2018-10061	15-06-2018		1/3	B		
	B	ECR-2018-10002	06-06-2018					
	A	ECR-2016-8465	10-10-2015					
	Revision ECR Number Date							
	Designer Ma Hongtao							
Roughness (µm) NA	Approval Zhao Yanbo							
	Confidential: Property of Danfoss Commercial Compressors. Not to be handed over to copied or used by third party. Two or three dimensional reproduction of contents to be authorized by Danfoss CC.					Designation VZH052/065 OUTLINE 		
ANSI Y14.5M-1994						SHEET 1 of 1		
						C.2	8590007	C