

ENGINEERING  
TOMORROW

*Danfoss*

On-site workshop program - Container + Machines & Tooling

# On-Site Hose Assembly Workshop

Bring hydraulic hose replacement and repair to your doorstep





# We bring the hose shop **to you.**

In today's fast-paced world, industries and businesses often face the challenge of unexpected equipment breakdowns or maintenance issues, possibly even at far away locations, leading to costly downtime. When it comes to hydraulic systems, getting a hose assembly replaced or repaired promptly is crucial for seamless operations. However, traditional solutions involve time-consuming processes, including locating a service provider, ordering, and transporting the hose assembly, and waiting for the repair to be completed.

Introducing the On-Site Hose Assembly Workshop – a service designed to bring hydraulic hose replacement and repair directly to you or your customers doorstep. Our compact and fully-equipped mobile unit, configured with state-of-the-art hydraulic tooling equipment, is stocked based on your orders and needs with a comprehensive range of high-quality hoses, fittings, and tools. This guarantees not only on-the-spot assemblies and repairs but also ensures the use of industry-leading components for superior reliability. This approach eliminates the need for businesses to halt operations or waste valuable time transporting equipment to a fixed location.



# On-site assembly solution:

Minimize downtime with a customized on-site workshop

On-site Assembly Benefits	
Problem	Solution
<b>Equipment breakdowns can lead to significant downtime.</b>	<p><b>Minimize Downtime:</b></p> <p>Our On-Site Hose Assembly Workshop, equipped with high-quality hydraulic tooling, ensures a rapid response, minimizing downtime by providing on-site hose replacement or repair with top-notch components for unmatched reliability.</p>
<b>Traditional methods involve transportation and waiting times.</b>	<p><b>Convenience and Efficiency:</b></p> <p>We bring the hydraulic hose service to your customers' location, utilizing high-quality hydraulic tooling for precision and efficiency, saving you time and ensuring a more efficient solution.</p>
<b>Downtime and transportation costs can impact the bottom line.</b>	<p><b>Cost-Effective:</b></p> <p>Our On-Site solution eliminates the need for expensive equipment transportation and reduces overall downtime. The use of Danfoss components further ensures longevity, resulting in cost savings for your business.</p>
<b>One-size-fits-all solutions may not meet specific requirements.</b>	<p><b>Tailored Solutions:</b></p> <p>We offer customized hose assemblies, utilizing Danfoss hoses and fittings, to meet the unique needs of your equipment, providing tailored solutions for optimal performance. Therefore, we also offer customized units for your needs - you can select the tooling machines that match your manufacturing needs and tailor the unit set up for your site.</p>
<b>Equipment breakdowns can occur at any time.</b>	<p><b>24/7 Availability:</b></p> <p>Our On-Site Hose Assembly Workshop operates around the clock, providing a 24/7 solution, using Danfoss components, to ensure your business is always up and running.</p>
<b>Delayed repairs can lead to safety hazards.</b>	<p><b>Enhanced Safety:</b></p> <p>Our prompt on-site service, with high-quality hydraulic tooling, enhances workplace safety by quickly addressing hydraulic issues, preventing potential accidents or damage.</p>
<b>Transportation contributes to environmental impact.</b>	<p><b>Environmental Responsibility:</b></p> <p>Offering on-site services with units configured with Danfoss hydraulic hoses, fittings and tooling, reduces the need for multiple trips, providing a more environmentally friendly approach to hydraulic hose maintenance. Not even mentioning that a fault hose assembly might cause leaking and spillage, so to change those in time is essential to protect the environment.</p>

With the On-Site Hose Assembly Workshop, configured with cutting-edge high-quality hydraulic tooling equipment and hoses and fittings, we are not just solving a problem – we hand you a tool you can use with your customers easy and flexible. We provide a seamless, efficient, and cost-effective solution with industry-leading components, tailored to your unique operational needs.



## Tailored flexibility: An on-site mobile workshop unit with customizable configurations

Our on-site mobile workshop unit offers unparalleled flexibility with a range of customized configurations tailored to meet the unique demands of hose applications and production volumes on-site. The container base comes in two sizes of 20 feet and 40 feet container, ET2000-20-380 and ET2000-40-380 and is available in red or white colors.









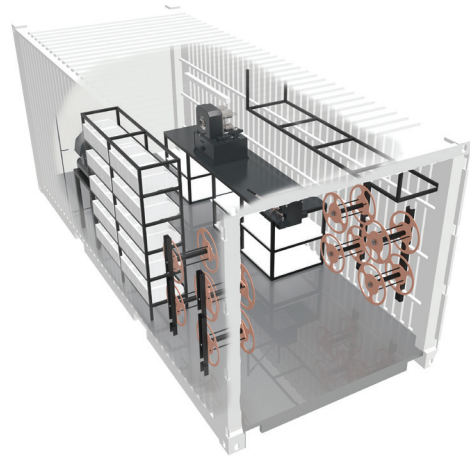
# Standard & Customizable options

## Containers and equipment

### Containers



Red container



White container

Standard Options		Customizable Options				
Container Construction	Hose & Fitting Storage Racks	Container	Crimp Machines	Cutting Machines	Cutting Machine Blade	Skiving Machines
<ul style="list-style-type: none"> <li>• Container Color: Red or White – inside &amp; outside</li> <li>• White or red Danfoss logo (dependent on container color) on sides of container</li> <li>• Electricity lines &amp; plugs for 380V &amp; 220V</li> <li>• Light</li> <li>• Electric control panel</li> <li>• PVC – Container floor covering</li> </ul>	<ul style="list-style-type: none"> <li>• Hose stocking shelves</li> <li>• Lockable cabinets with drawers</li> <li>• Fitting Shelves</li> <li>• Machine desk for skiving machine</li> <li>• Machine desk for crimp &amp; cutting machine</li> <li>• Rotary rollers for hoses</li> <li>• Upper shelves with metal mesh platform</li> </ul>	<ul style="list-style-type: none"> <li>• ET2000-20-380-RD</li> <li>• ET2000-20-380-WT</li> <li>• ET2000-40-380-RD</li> <li>• ET2000-40-380-WT</li> </ul>	<ul style="list-style-type: none"> <li>• ET4200</li> <li>• ET4300</li> <li>• ET4400</li> </ul>	<ul style="list-style-type: none"> <li>• ET9400</li> </ul>	<ul style="list-style-type: none"> <li>• ET9400C-275-C</li> </ul>	<ul style="list-style-type: none"> <li>• ET6100</li> </ul>



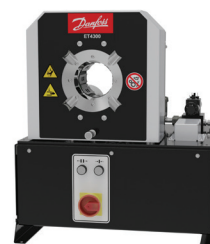
### General Purpose Crimp Machines (customizable options)



ET4200



ET4400



ET4300

### Cutting Machines



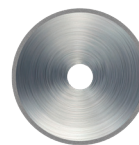
ET9400

### Skiving Machines



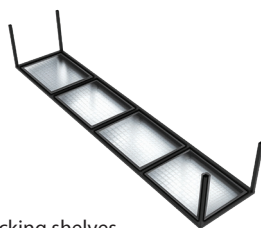
ET6100

### Cutting Machine Blades



ET9400C-275-C

### Hose & Fitting Storage Racks (standard options)



Hose stocking shelves  
with metal mesh



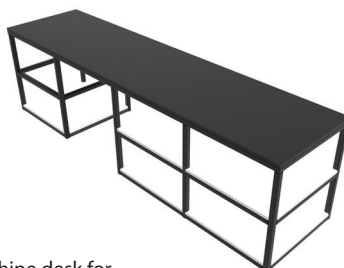
Lockable cabinets  
with drawers



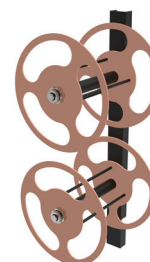
Fitting shelves



Machine desk for  
skiving machine



Machine desk for  
crimp & cutting machine



Rotary rollers  
for hoses





# Built in organization:

## Standard hose & storage racks enhance efficiency

The set-up of hose and storage racks is standardized, ensuring efficiency and durability, while the overall construction follows a fixed structure. However, the customizable nature of machine selection allows for optimization of the workspace based on specific operational requirements. This unique feature empowers users to create a tailored on-site workshop that seamlessly integrates with their hose applications, ensuring maximum productivity and convenience.

Hose & Storage Rack Benefits	
Hose Stocking Shelves	<b>Efficient Organization:</b> Streamlined storage for hoses, ensuring easy accessibility and organization.
	<b>Space Optimization:</b> Maximize storage capacity while minimizing the required floor space.
Lockable Cabinets with Drawers	<b>Secure Organization:</b> Our cabinets provide secure storage with lockable drawers, ensuring the safety of valuable items while promoting systematic organization.
	<b>Enhanced Accessibility:</b> Easy access to stored items streamlines workflow efficiency, saving time and optimizing productivity in various environments.
Fitting Shelves	<b>Organized Display:</b> Shelves provide an organized display of fittings for quick identification.
	<b>Accessibility:</b> Convenient access to fittings, reducing assembly time.
Upper shelves with Metal Mesh Platform	<b>Elevated hose storage:</b> Our upper shelves with metal mesh platforms provide elevated storage for hoses, optimizing space utilization and keeping hoses easily accessible.
	<b>Enhanced Visibility and Airflow:</b> The metal mesh platform design allows for increased visibility of stored hoses and promotes airflow, aiding in hose drying and preventing moisture buildup.
Dedicated Machine Desk for Skiving Machine only	<b>Dedicated Workstation:</b> A designated space for the skiving machine ensures focused and efficient operations.
	<b>Workflow Optimization:</b> Enhance the skiving process with an ergonomically designed desk.
Machine Desk for Crimp Machine & Cutting Machine	<b>Consolidated Work Area:</b> Bring together the crimp and cutting machines in one designated space for a seamless workflow.
	<b>Operational Efficiency:</b> Streamline processes with a centralized machine desk, reducing movement between workstations.
Rotary Rollers for Hoses	<b>Seamless Hose Handling:</b> Our rotary rollers facilitate smooth handling of hoses, ensuring effortless movement and preventing kinks or tangles during operations.
	<b>Enhanced Maneuverability:</b> With rotary rollers, hoses can be easily rotated and maneuvered, optimizing workflow efficiency and reducing strain on equipment and operators.



## A stylish branded structure:

Eye-catching design equipped with workplace essentials





### Container Construction Highlights

Danfoss red or white container color - inside & outside	<b>Brand Consistency:</b> The vibrant red color enhances brand visibility and consistency, while the crisp white accents add neutrality and modernity.
	<b>Aesthetic Appeal:</b> The color choice adds a visually appealing element to the workspace.
White or red Danfoss logo for both long length size of the container	<b>Brand Identification:</b> Prominent Danfoss logo for easy brand identification.
	<b>Professional Aesthetics:</b> The white logo complements the red container color for a professional look.
Electricity lines & plugs for 380V & 220V	<b>Power Accessibility:</b> In-built electricity lines and plugs for seamless connectivity to machines.
	<b>Operational Convenience:</b> Ensure a readily available power source for all equipment within the container.
Light	<b>Illumination:</b> Adequate lighting for enhanced visibility and safety within the container.
	<b>Efficient Workspace:</b> Well-lit environment for improved work accuracy and efficiency.
Control panel	<b>Safety Feature:</b> Incorporation of electrical control panel and fuses enhances safety by protecting equipment from electrical faults.
	<b>Equipment Protection:</b> Safeguarding against electrical issues ensures the longevity and reliability of electronic components.
PVC – container floor covering	<b>Protective Flooring:</b> PVC covering provides a protective layer for the container floor, preventing damage.
	<b>Easy Maintenance:</b> Simplifies cleaning and maintenance while offering durability for a longer-lasting floor surface.



# Ordering information

## Available workshop combinations and order codes

Mobile workshop combinations and order codes					
No.	SAP P/N	Assembly P/N	Container P/N	Crimp Machine P/N	Cutting Machine P/N
1	12021610	ET2001-20-380RD	ET2000-20-380-RD	ET4200-001-380KT	ET9400-275-380
2	12021611	ET2002-20-380RD	ET2000-20-380-RD	ET4300-001-380KT	ET9400-275-380
3	12021612	ET2003-20-380RD	ET2000-20-380-RD	ET4400-001-380KT	ET9400-275-380
4	12021613	ET2001-20-380WT	ET2000-20-380-WT	ET4200-001-380KT	ET9400-275-380
5	12021614	ET2002-20-380WT	ET2000-20-380-WT	ET4300-001-380KT	ET9400-275-380
6	12021615	ET2003-20-380WT	ET2000-20-380-WT	ET4400-001-380KT	ET9400-275-380
7	12021616	ET2001-40-380RD	ET2000-40-380-RD	ET4200-001-380KT	ET9400-275-380
8	12021617	ET2002-40-380RD	ET2000-40-380-RD	ET4300-001-380KT	ET9400-275-380
9	12021618	ET2003-40-380RD	ET2000-40-380-RD	ET4400-001-380KT	ET9400-275-380
10	12021619	ET2001-40-380WT	ET2000-40-380-WT	ET4200-001-380KT	ET9400-275-380
11	12021620	ET2002-40-380WT	ET2000-40-380-WT	ET4300-001-380KT	ET9400-275-380
12	12021621	ET2003-40-380WT	ET2000-40-380-WT	ET4400-001-380KT	ET9400-275-380



Mobile workshop combinations and order codes						
No.	SAP P/N	Assembly P/N	Container P/N	Crimp Machine P/N	Cutting Machine P/N	Skiving Machine P/N
<b>13</b>	12021622	ET2004-20-380RD	ET2000-20-380-RD	ET4200-001-380KT	ET9400-275-380	ET6100KT
<b>14</b>	12021623	ET2005-20-380RD	ET2000-20-380-RD	ET4300-001-380KT	ET9400-275-380	ET6100KT
<b>15</b>	12021624	ET2006-20-380RD	ET2000-20-380-RD	ET4400-001-380KT	ET9400-275-380	ET6100KT
<b>16</b>	12021625	ET2004-20-380WT	ET2000-20-380-WT	ET4200-001-380KT	ET9400-275-380	ET6100KT
<b>17</b>	12021626	ET2005-20-380WT	ET2000-20-380-WT	ET4300-001-380KT	ET9400-275-380	ET6100KT
<b>18</b>	12021627	ET2006-20-380WT	ET2000-20-380-WT	ET4400-001-380KT	ET9400-275-380	ET6100KT
<b>19</b>	12021628	ET2004-40-380RD	ET2000-40-380-RD	ET4200-001-380KT	ET9400-275-380	ET6100KT
<b>20</b>	12021629	ET2005-40-380RD	ET2000-40-380-RD	ET4300-001-380KT	ET9400-275-380	ET6100KT
<b>21</b>	12021630	ET2006-40-380RD	ET2000-40-380-RD	ET4400-001-380KT	ET9400-275-380	ET6100KT
<b>22</b>	12021631	ET2004-40-380WT	ET2000-40-380-WT	ET4200-001-380KT	ET9400-275-380	ET6100KT
<b>23</b>	12021632	ET2005-40-380WT	ET2000-40-380-WT	ET4300-001-380KT	ET9400-275-380	ET6100KT
<b>24</b>	12021633	ET2006-40-380WT	ET2000-40-380-WT	ET4400-001-380KT	ET9400-275-380	ET6100KT



ENGINEERING  
TOMORROW



**Danfoss Power Solutions**, Nordborgvej 81, 6430 Nordborg, Denmark, Tel. +45 74 88 22 22, Fax +45 74 65 25 80  
[www.danfoss.com](http://www.danfoss.com), E-mail: [info@danfoss.com](mailto:info@danfoss.com)

Any information, including, but not limited to information on selection of product, its application or use, product design, weight, dimensions, capacity or any other technical data in product manuals, catalogues descriptions, advertisements, etc. and whether made available in writing, orally, electronically, online or via download, shall be considered informative, and is only binding if and to the extent, explicit reference is made in a quotation or order confirmation. Danfoss cannot accept any responsibility for possibly errors in catalogues, brochures, videos and other material. Danfoss reserves the right to alter its products without notice. This also applies to products ordered but not delivered provided that such alterations can be made without changes to form, fit or function of the product. All trademarks in this material are property of Danfoss A/S or Danfoss group companies. Danfoss and the Danfoss logo are trademarks of Danfoss A/S. All rights reserved.