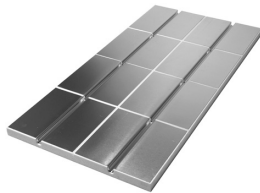
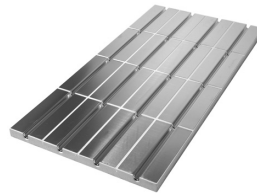
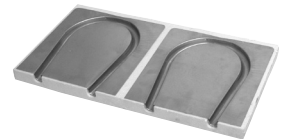
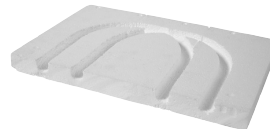


Data Sheet

SpeedUp Heat Panels

Application

*SpeedUp heat panel CZ**SpeedUp heat panel EZ**SpeedUp aluminium header panel EZ (accessory)**SpeedUp header panel CZ**SpeedUp header panel CO**SpeedUp blank panel BP*

The SpeedUp heat panel is part of a universal and optimum underfloor heating system for all new and old buildings. It is suitable for renovation, extensions and use in dry installation. The Danfoss 16 x 2 mm composite pipe laid into the Danfoss SpeedUp heat panels at laying

distances of between 125 mm and 250 mm allows for a tailored output. The composite pipe is fastened and fixed into the specially formed pipe channels (Ω -shaped) of the prefabricated aluminium clad heating slats.

Maximum value for surface roughness in mm with measuring distances in m

Line	Reference	0.1 m	1 m	4 m	10 m	15 m
4	Prepared floors with extra requirements, e.g. with uneven filler	1 mm	3 mm	9 mm	12 mm	15 mm

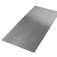
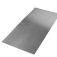




Ordering

Product	Type	Dimensions (L x W x H)	Code no.
SpeedUp heat panel comfort zone, CZ	FH-SA	1000 x 500 x 30 mm	088X0100
SpeedUp heat panel edge zone, EZ	FH-SB	1000 x 500 x 30 mm	088X0101
SpeedUp header panel, CZ	FH-SC	250 x 500 x 30 mm	088X0102
SpeedUp header panel, EZ	FH-SD	250 x 500 x 30 mm	088X0103
SpeedUp header panel, CO	FH-SE	250 x 375 x 30 mm	088X0104
SpeedUp blank panel, BP	FH-SF	1000 x 500 x 30 mm	088X0105

Materials

Base	EPS Polystyrene 035 DEO; 240kPa
SpeedUp heat panel	Aluminium 0.5 mm, with pipe channels (Ω -shaped), crimped
Thermal conductivity	0.035 W/mK
Thermal resistance (R)	0.86 m ² K/W
Water vapour diffusion factor	40 according to DIN EN 12086
Flexibility (N/mm ²)	< 0.4 according to DIN EN 12089
Compressive strength	240 kPa at 10 % compression according to DIN EN 826
Building classification	E (according to EN 13501)

Accessories

Product	Type	Dimensions (L x W x H)	Code no.
 SpeedUp aluminium heating plate	FH-SI	495 mm x 242 mm x 0.5 mm	088X0110
 SpeedUp load bearing steel	FH-SJ	800 mm x 200 mm x 1 mm	088X0111
 SpeedUp alu. header panel CZ	FH-SDA	250 mm x 500 mm x 30 mm	088X0112
 SpeedUp alu. header panel EZ	FH-SDB	250 mm x 500 mm x 30 mm	088X0113
 SpeedUp perimeter insulation	FH-SK	50 m x 100 mm x 8 mm	088X0122
 Support batten, EPS	FH-SFG	800 mm x 45 mm x 30 mm	088X0136

Note on HBCD

This product contains a substance included on the candidate list according to article 59 (1,10) of regulation EC No. 1907/2006 ('REACH') in a concentration above 0.1% w/w: flameproofing agent, hexabromocyclodecane.

HBCD is also present on the Annex 14 list.

Danfoss A/S

Floor Heating Hydronics • Ulvehavevej 61 • DK-7100 Vejle • Denmark • Phone: +45 7488 8500 • Fax: +45 7488 8501
heating@danfoss.com • www.floorheating.danfoss.com

Danfoss can accept no responsibility for possible errors in catalogues, brochures and other printed material. Danfoss reserves the right to alter its products without notice. This also applies to products already on order provided that such alterations can be made without subsequential changes being necessary in specifications already agreed.
 All trademarks in this material are property of the respective companies. Danfoss and the Danfoss logotype are trademarks of Danfoss A/S. All rights reserved.