

# Vickers® by Danfoss

## ICMB Industrial Cam Lobe Motor

Full range offering - 15Ltr to 52.8Ltr under 4 frame sizes



## Ultra-high torque, in a compact package

Vickers by Danfoss ICMB cam lobe motors are engineered to deliver the power and precision required in demanding industrial, mining, and marine environments. Designed for high output torque and low inertia, these radial piston motors are capable of delivering full torque output from zero speed. They provide versatility in installation, with a displacement range of 15Ltr to 52.8Ltr across four frame sizes and options for mounting on a driveshaft or splined shaft. Built for maximum efficiency, durability, and low maintenance costs, the ICMB cam lobe motor is the ultimate solution for smooth, reliable power.

Send inquiries to [industrialpumpsmotorsupport@danfoss.com](mailto:industrialpumpsmotorsupport@danfoss.com)



Danfoss can accept no responsibility for possible errors in catalogues, brochures and other printed material. Danfoss reserves the right to alter its products without notice. This also applies to products already on order provided that such alterations can be made without consequential changes being necessary in specifications already agreed. All trademarks in this material are property of the respective companies. Danfoss and the Danfoss logotype are trademarks of Danfoss A/S. All rights reserved.

### Features

- Full torque from zero speed
- High output torque and power-to-weight ratio
- High efficiency and low maintenance cost
- Flexible mounting: shrink disc coupling or splines, torque arm or flange mounting
- Low inertia

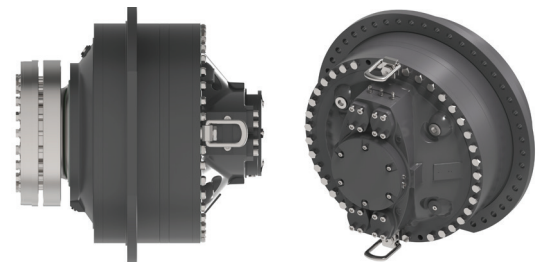
### Specs

- Technology: Radial piston
- Displacement: 15Ltr to 52.8Ltr under 4 frame sizes
- Specific torque: 280 - 840 Nm/bar\*
- Rated speed: 21 - 58 rpm\*

\*Varies by displacement

### Markets/Applications

- |                        |            |
|------------------------|------------|
| • Marine               | • Mining   |
| • Drilling machines    | • Crushers |
| • Industrial machinery | • Forestry |



ICMB Industrial Cam Lobe Motor