

Product Sheet

SonoCollect 110™

Compact and integral



Smart Metering is easy and intuitive: the SonoCollect 110™ abandons extensive configuration and various number of additional hardware. SonoCollect 110™ is a consolidated device which fulfills all duties and responsibilities of Smart Metering. Real Plug'n'Play saves time and effort.

Complete functionality

As gateway for Smart Metering, SonoCollect 110™ comes with a standardized M-Bus Interface which supports up to 80 slaves. In addition there are four S0 pulse inputs to connect further meters. Furthermore the Wireless M-Bus is offering a new technology compliant to the OMS. Therefore you can use SonoCollect 110™ in all present and prospective infrastructures to capture consumption data.

Beyond that, SonoCollect 110™ provides an RS-232/485 serial interface for other meters.

In order to connect SonoCollect 110™ to your remote metering systems there are an Ethernet interface as well as GSM. You are free to choose the appropriate one for your system. Determine the way of connection and insert SonoCollect 110™ into your network.

Consolidated design

SonoCollect 110™ is a multifunctional and very compact controller. With a width of only 4 modular units it is able to fulfill the requirements of the FNN specifications and also of many utility suppliers right now.

Additionally the power supply unit is integrated into SonoCollect 110™. External power supply units belong to the past, connect SonoCollect 110™ directly to the mains voltage. This offers you extra space and no additional installation costs.

Connection to management systems

SonoCollect 110™ supports XML and SML. Through this features, it is prepared for the connection with your back-end system to facilitate remote meter reading or energy data management. Updates and configurations can be done remotely by the server system. An easy way of maintenance is assured. SonoCollect 110™ offers all essential attributes for intelligent Smart Metering.

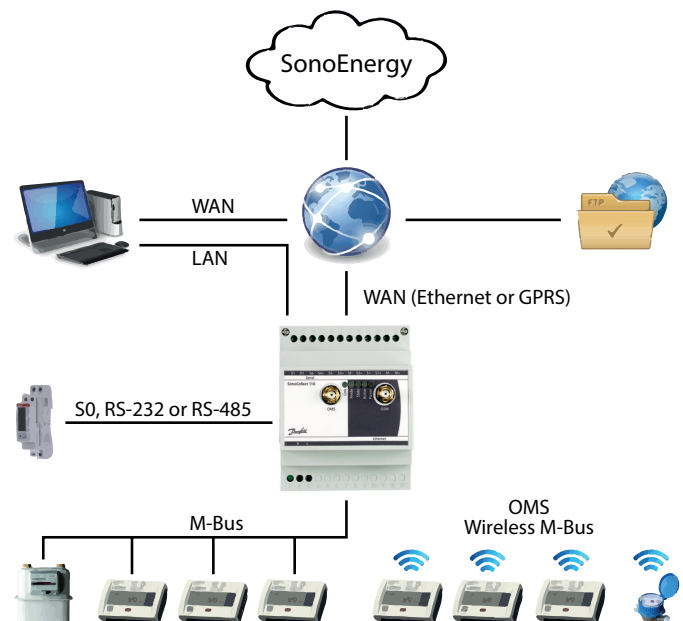
Participation of the customer

In daily life the awareness of the environment plays an important role. A client website of the utility supplier offers the customer the possibility of up-to-date information about the consumption at any time. Thanks to an integrated web server, SonoCollect 110™ provides an additional offline front-end. The customer can directly access the consumption data without internet access. A simple internet browser can be used to connect to SonoCollect 110™. The easy to use website presents the consumption data and some statistics of all connected meters.

Smart Metering - start now!

Change now and use the new technology for an easy administration of your power and energy network. Offer your clients the possibility to keep an eye on their own energy balance. Thanks to the support of 1Pv6 SonoCollect 110™ can be used in future networks.

SonoCollect 110™, the compact and integral Controller, makes Smart Metering feasible for you.



Ordering

Model	M-Bus	wM-Bus (OMS)	Ethernet	GSM/GPRS	Code no.
SonoCollect 110 E-M-80	X		X		014U1600
SonoCollect 110 E-WM-80	X	X	X		014U1601
SonoCollect 110 G-M-80	X		X	X	014U1610
SonoCollect 110 G-WM-80	X	X	X	X	014U1611

Technical specifications, General

Power supply	90 - 260 VAC, 50 Hz, screw terminals, integrated power supply
Power consumption	< 3 W (idle state), max. 10 W (GPRS communication + 60 metres)
Housing dimensions	4 modular units, 72 x 91 x 62 (W x H x D in mm)
Installation	DIN rail
Protection class	IP 20
Temperature range	0 - 50° C
Humidity	10 - 95% relatively, no condensation
Integrated web server	Yes
Memory for local data storage	≥ 2 GB
Firmware update	Yes, directly or via WAN (Internet)
Configuration via WAN (Internet)	Yes, complete remote control via WAN

Technical specifications, Metering

OMS compliant Interface	Yes, optional, AES encryption
Wireless M-Bus Interface	Yes, AES encryption, auto-scan, Mode: S, T, C
M-Bus Interface	Yes, up to 80 participants, auto-scan, compliant to EN 13757
Conformity to SML	Yes
Serial interface	Yes, RS-232 or RS-485 (switchable), RJ45, IEC 62056-21
S0 pulse inputs	Yes, 4 channels, screw terminals, IEC 62053-31

Technical specifications, Communication

Ethernet interface	Yes, 100 MB, RJ45, support of IPv6 and IPsec (VPN)
GSM/GPRS module	Yes, optional, external antenna via SMA-Connector, slot for Mini-SIM
WAN connection to server system (push)	TCP/HTTP connection (XML), optionally extensible
Encryption WAN (server communication)	SSL (server- and client-side certification), OpenVPN
E-Mail transmission (push)	XML data, CSV data optional
FTP transfer (push, pull)	CSV data
Plug'n'Play	Prepared for SonoEnergy™ - Smart Metering
Fallback-Routing (alternative connection in case of an incident)	Yes, indication of further servers and communication paths

Danfoss A/S

Energy Meters • Ulvehavevej 61 • DK-7100 Vejle • Denmark
 Phone: +45 7488 8500 • Fax: +45 7488 8501
heating@danfoss.com • www.heating.danfoss.com

Danfoss can accept no responsibility for possible errors in catalogues, brochures and other printed material. Danfoss reserves the right to alter its products without notice. This also applies to products already on order provided that such alterations can be made without consequential changes being necessary in specifications already agreed.
 All trademarks in this material are property of the respective companies. Danfoss and the Danfoss logotype are trademarks of Danfoss A/S. All rights reserved.