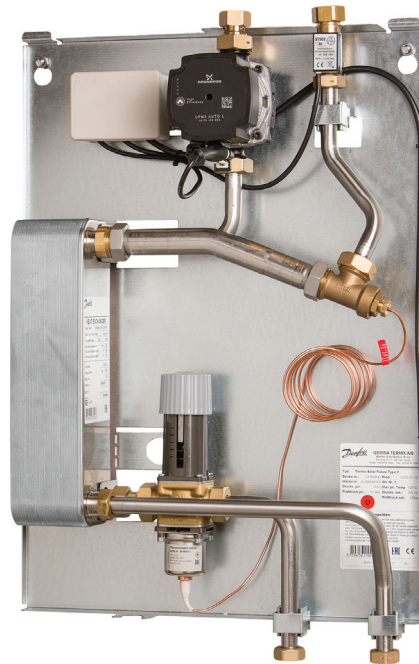


## Fact sheet

# Termix Solar S+

Wall-mounted domestic hot water module for flats, single-family houses and apartment buildings



## Application

The Termix Solar S+ is an instantaneous water heater, featuring good heat extraction and performance by means of a plate heat exchanger and a high-performance charging pump. The heat exchanger is made solely of stainless steel, thereby making this station the perfect choice for areas where copper corrosion is known to occur. Termix Solar S+ is applicable for heating systems with buffer accumulators, solar systems or for other heat sources, where a low return temperature is preferred. The primary source is cooled out efficiently by the heat exchanger, thereby creating a good operation economy. A flow switch in the domestic hot water pipe is controlling the primary pump. An optional circulation pump can maintain the circulating temperature at a desired temperature.

## Domestic hot water (DHW)

The domestic hot water is prepared in the heat exchanger and the temperature is regulated with a thermostatic control valve. The AVTB valve ensures a stable hot water temperature by varying loads, flow temperatures and differential pressure, without the need for readjusting the valve. There is no additional pressure loss on the secondary side of the heat exchanger with a thermostatic control. Therefore this unit is suitable in systems with low pressure in the cold water mains.

## Options

The water heater can be provided with a circulation pump with safety valve, a white-laquered steel cover and two different ball valve sets (one set is with DVGW approval for DHW).

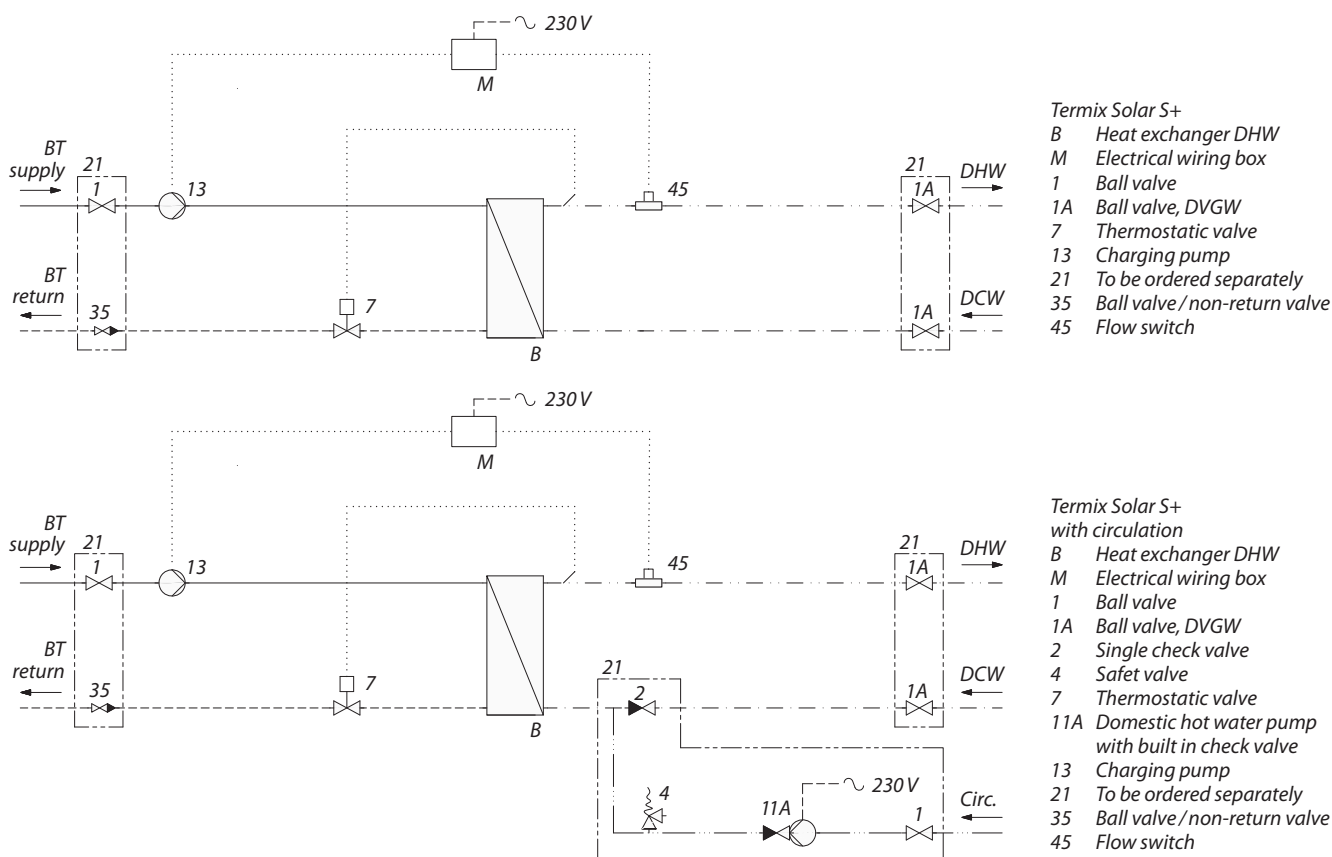
## FEATURES AND BENEFITS

- Domestic hot water module with tap capacity of up to 30l/min. at 84 kW
- Thermostatic control
- Operates independently of differential pressure and flow temperature
- Heat exchanger made of stainless steel; ideal for areas with known copper corrosion
- High efficiency pump capable of 7m head
- Reliable long-life AVTB regulation valve

## Construction

All pipes are made of stainless steel. The connections are made by nuts and gaskets. The gasketed heat exchanger is made of stainless steel plates.

## CIRCUIT DIAGRAM – EXAMPLE

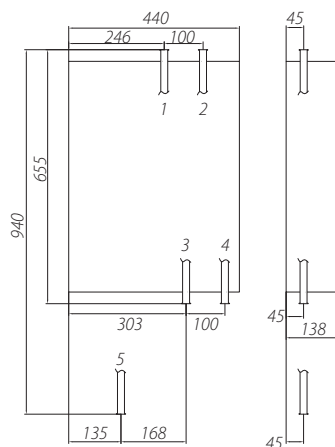


### Technical parameters:

Nominal pressure:	PN 10
DH supply temperature:	$T_{max} = 120^{\circ}\text{C}$
DCW static pressure:	$P_{min} = 0.5\text{ bar}$
HEX material:	Stainless steel
<b>Weight incl. cover:</b>	18 kg (incl. packing)
<b>Dimensions (mm):</b>	
Without cover:	H 655 × W 440 × D 140
With cover:	H 715 × W 450 × D 150
With circulation:	H 940 × W 440/450 × D 140/150

### Connections:

1. Buffer tank (BT) supply
2. Domestic hot water (DHW)
3. Buffer tank (BT) return
4. Domestic cold water (DCW)
5. Circulation (optional)



### Connections sizes:

All connections: G 3/4" (int. thread)

**Module code number:** 144H2346

### Options:

- Circulation pump with 10 bar safety valve (144H0936)
- White-laquered steel cover (144H1282)
- Ball valve set with 4 ball valves (144H0930)
- Ball valve set with 4 ball valves, of which two are with DVGW approval (144H0932)

## DHW: CAPACITY EXAMPLES

DHW temperature [°C]	Tap capacity [kW]	Supply flow primary [°C]	Pressure loss primary [kPa]	Tap flow [l/min]
10/45	57	55	35	23
10/50	84	70	35	30

**Gemina Termix A/S** • Member of the Danfoss Group  
 heating.danfoss.com • +45 9714 1444 • E-Mail: mail@termix.dk

Danfoss can accept no responsibility for possible errors in catalogues, brochures and other printed material. Danfoss reserves the right to alter its products without notice. This also applies to products already on order provided that such alterations can be made without consequential changes being necessary in specifications already agreed. All trademarks in this material are property of the respective companies. Danfoss and all Danfoss logotypes are trademarks of Danfoss A/S. All rights reserved.