



ELECTRONIC ACTUATOR SUBMITTAL, ABNM A5 LIN / LOG

DATE:	SPECIFICATION SECTION:			PAGE:	of
PROJECT	ARCHITECT/ENGINEER	AGENCY	REPRESENTATIVE	DATE	NOTES
		ARCHITECT			
SUPPLIER	CONTRACTOR	ENGINEER			
		CONTRACTOR 1			
		CONTRACTOR 2			
		OTHER			
ORDER NO.		<i>NOTE</i>	<i>COMMENT</i>		



Model	Number	Unit Tag	Qty
ABNM A5 LIN, NC (082F1161)			
ABNM A5 LIN, NO (082F1165)			
ABNM A5 LOG, NC (082F1160)			
ABNM A5 LOG, NO (082F1163)			

Each actuator must be ordered with a cable that will be plugged in

Cable Length	Code no.	Qty
3ft (1m)	082F1081	
16ft (5m)	082F1082	
32ft (10m)	082F1083	

Specification

Electric actuator shall be a thermo-hydraulic design and of a compact size compatible with the Danfoss AB-QM valve body ranging in sizes from 1/2" to 1 1/4". A visible position indicator shall be incorporated into the top of the actuator. The actuator shall have a plug-in 3-wire cable and powered via low voltage (24VAC) and accept a proportional input signal of 0-10VDC that is fully applied to the travel of the AB-QM. The design of the actuator shall incorporate a safety function providing a full closed response when power is removed from the actuator or a full open response version. The actuator shall be mounted and removed from an adapter base via snap on mechanism. The actuator options shall have either an equal percentage (LOG) or linear (LIN) characteristic version.

Description

The ABNM A5 actuator is a thermo-wax electric actuator for opening and closing valves in the fields of heating and chilled water systems (HVAC). The actuator converts the 0-10 VDC input signal from a direct digital control (DDC) or proportional room thermostat, into a proportional actuator travel, which can be either linear or logarithmic (equal percentage) characteristic. The ABNM A5 series actuator will apply the 0-10VDC signal across the entire adjusted setting of the AB-QM valve body for sizes ranging from 1/2 to 1 1/4".

Technical Specifications

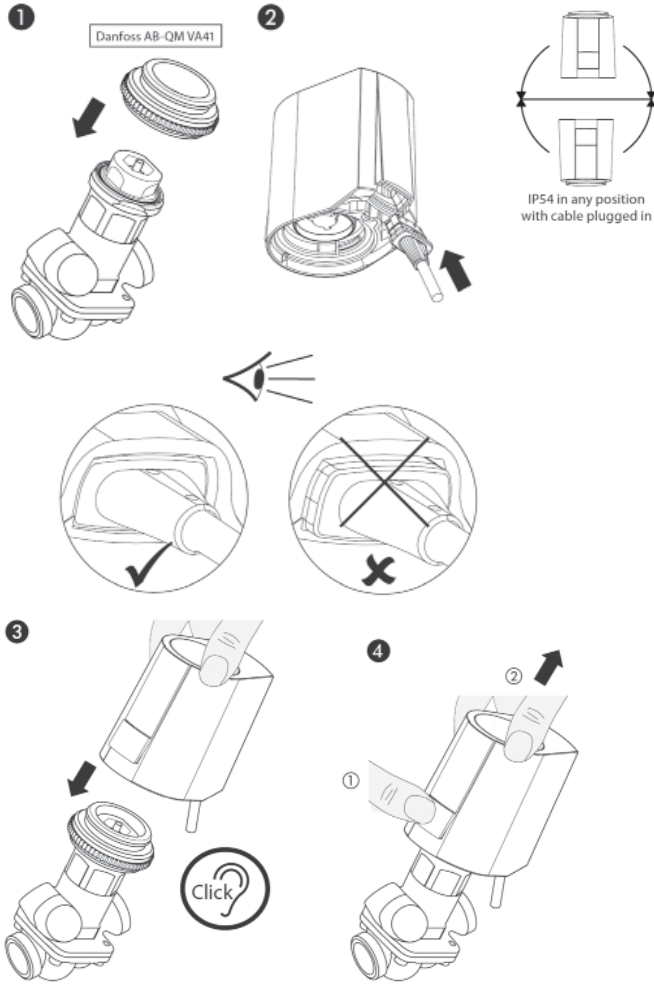
	Normally Closed	Normally Open
Power supply	24 Vac, (-10% to +20%)	
Frequency	50 Hz / 60 Hz	
Power consumption	1.0 VA	1.2 VA
Control voltage	0-10 VDC	
Input Signal	Linear / Logarithmic (Equal percentage)	
Delay when energized	2-3 min. from cold start	
Safety Function, w/o no power	Normally Closed (NC)	Normally Open (NO)
Spindle length travel	5 mm	6.5 mm
Actuator travel speed	30 s/mm	
Closing force	22.4 lbf (100N)	
Ambient temperature	32...140°F (0...60°C)	
Fluid temperature	32...212°F (0...100°C)	
Weight	0.24 lbs (111 g)	

Submittal

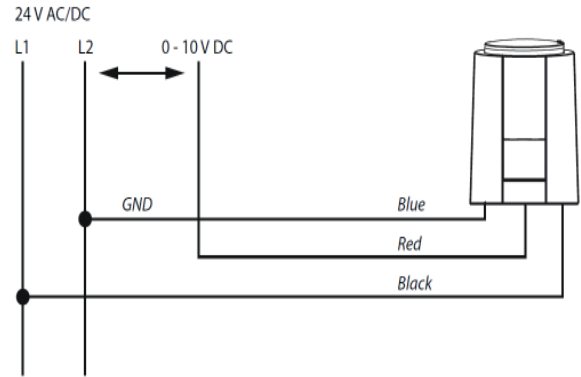
AB-QM Pressure Independent Balance and Control Valve



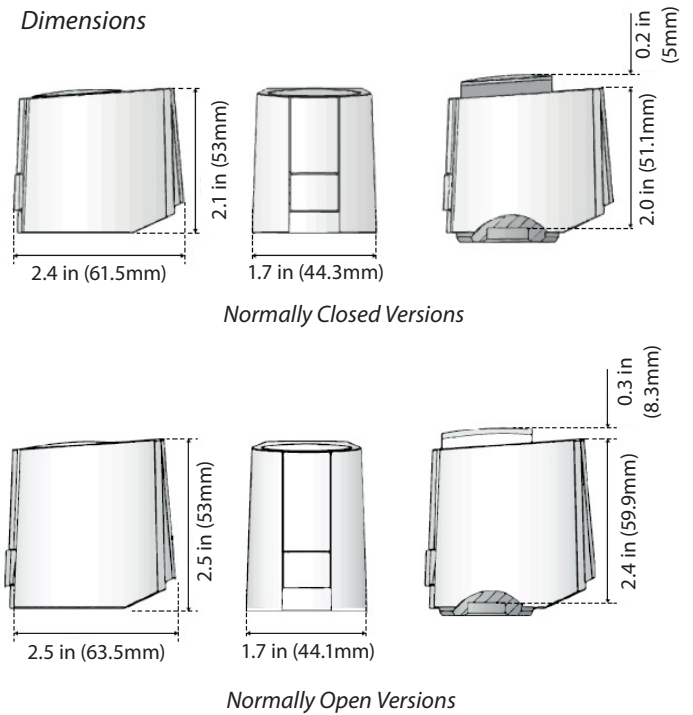
Installation



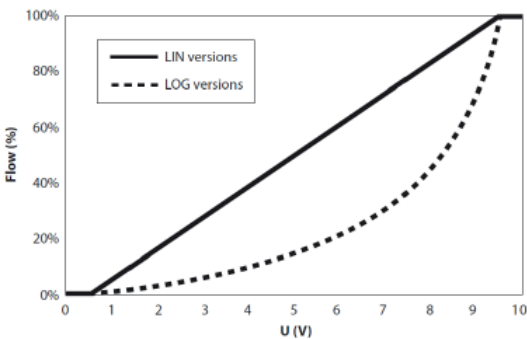
Electrical Wiring



Dimensions



Control Characteristic Curve



Danfoss can accept no responsibility for possible errors in printed materials and reserves the right to alter its products without notice. All trademarks in this material are property of the respective companies. Danfoss and Danfoss logotype are trademarks of Danfoss A/S. All rights reserved.



Danfoss Inc.
 Toronto, ON,
 Tel.: 866-375-4822, Fax: 905-285-2055
 www.na.heating.danfoss.com

Danfoss Inc.
 Baltimore, MD
 Tel.: 866-375-4822, Fax: 443-512-0270
 www.na.heating.danfoss.com