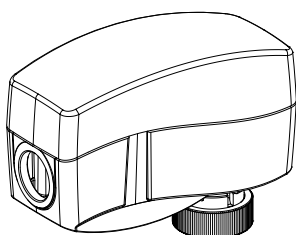


**Actuator Submittal, Proportional AMI 120 NL- 1 Motor Actuator**

<b>DATE:</b>		<b>SPECIFICATION SECTION:</b>			<b>PAGE:      of</b>	
<b>PROJECT</b>	<b>ARCHITECT/ENGINEER</b>	<b>AGENCY</b>	<b>REPRESENTATIVE</b>	<b>DATE</b>	<b>NOTES</b>	
		<b>ARCHITECT</b>				
		<b>ENGINEER</b>				
		<b>CONTRACTOR 1</b>				
		<b>CONTRACTOR 2</b>				
		<b>OTHER</b>				
<b>SUPPLIER</b>	<b>CONTRACTOR</b>	<b>NOTE</b>		<b>COMMENT</b>		
<b>ORDER NO.</b>						



Model	Number	Unit Tag	Qty
AMI 120 NL- 1			



**Specification**

The motor actuator shall be 24VAC powered and mount to the AB-QM valve body in sizes ranging from ½" to 1¼". The actuator shall be UL listed according to ANSI/ UL 6073-1 and 6073-2-14 and plenum rated according to UL2043. Control input signal for the actuator shall utilize a 3-wire ON/OFF control signal and be capable of providing feedback indication of lower and upper end position. The installation of the actuator will require no additional tools.

**Description**

The AMI 120 NL- 1 is a gear motor actuator that is assembled to the AB-QM valves in sizes ranging from ½" to 1¼". The AMI actuator is an ON/OFF 3-wire actuator that opens and closed the valve upon the demand signal for the space. The compact profile of the actuator and valve are ideal for fan coil units, induction units, and zone heating and cooling terminal applications located in plenum locations or within enclosures. Other features include:

- No tools required for mounting
- Maintenance free during lifetime
- Low noise operation
- Manual override

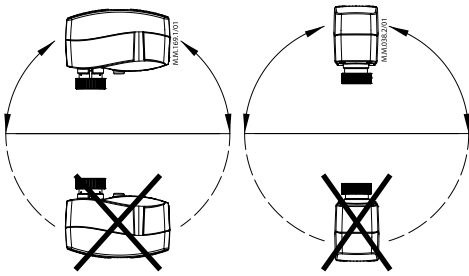
Actuator Type	AMI 120 NL- 1	
Code No.	082H5003	
Power Supply	24 VAC; +10%... -15%	
Electrical Connection	½" electrical conduit, wiring terminal block	
Power Consumption	1VA	
Frequency	50/60 Hz	
Control Input	ON/OFF, 3-wire	
Output Signal	End travel position feedback	
Actuator Force	45.0 lbf (200N)	
Max. Stem Travel	5mm	
Travel Speed	12s/mm @ 50Hz, 10s/mm @ 60Hz	
Max. Medium Temp.	248°F (120°C)	
Ambient Temp.	32 to 131°F (0 to 55 °C)	
Humidity	5 to 95% RH, noncondensing	
Weight	0.66lb (0.3kg)	
Regulatory Compliance:		
	USA	UL Listed, CCN XABE, File E480529; to ANSI/UL 60730-1 and ANSI/UL 60730-2-14  Investigated and approved for plenum use in accordance with UL 2043
	Canada	UL Listed, CCN XABE7, FileE48029; to CAN/CSA-E60730-1:13 and CAN/CSA-E60730-2-14:13
	Europe	CE Mark - Danfoss declares that this product complies with all relevant CE-marking directives

## Submittal

## AB-QM Pressure Independent Balance and Control Valve

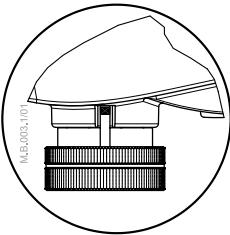


### Orientation



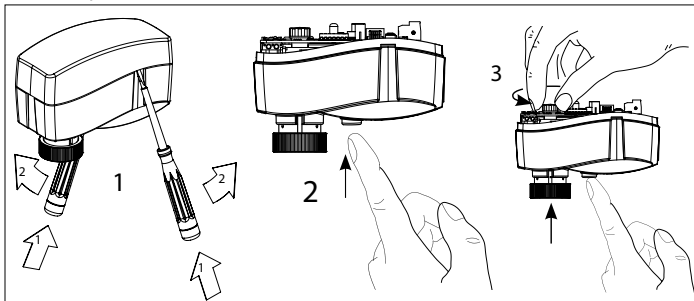
The actuator should be mounted with the valve stem in either horizontal position or pointing upwards. The actuator is fixed to the valve body by means of a threaded mounting ring which is tightened by hand and requires no additional tools. Mount the actuator prior to wiring it with power.

### Position Indication

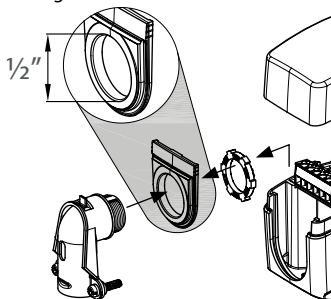


External position indication located at the neck of the motor actuator

### Manual Operation

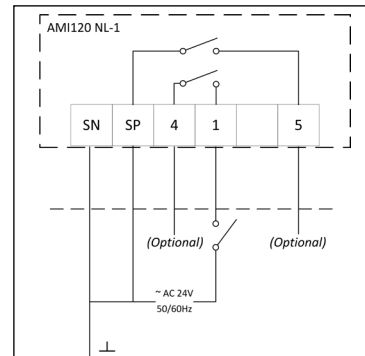


### Wiring

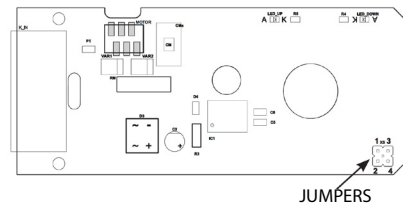


A field supplied 1/2" trade size electrician's fitting and lock nut can be mounted to the actuator enclosure. Insert wiring material through the removable plug or conduit fitting, and wire connection to the terminal block.

### Wiring



A set of jumpers located beneath the cover of the actuator will determine the directional movement of the actuator when the demand signal is received.



### Jumper Orientation:



Vertical (default):

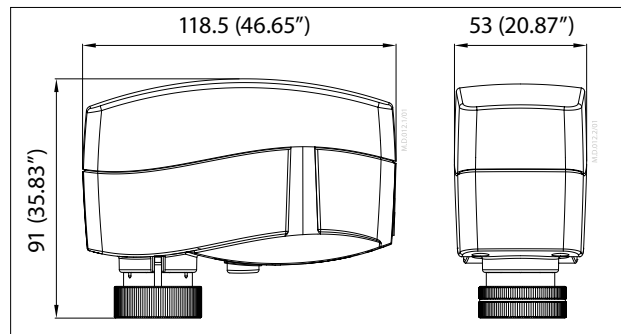
No Signal- Motor actuator drives down, valve closed  
Signal- Motor actuator drives up, valve open



Horizontal:

No Signal- Motor actuator drives up, valve open  
Signal- Motor actuator drives down, valve closed

### Dimensions



Danfoss can accept no responsibility for possible errors in printed materials and reserves the right to alter its products without notice. All trademarks in this material are property of the respective companies. Danfoss and Danfoss logotype are trademarks of Danfoss A/S. All rights reserved.



### Danfoss

Toronto, ON / Baltimore, MD  
Tel.: 888.326.3677, option 3  
Fax: 416-352-5981  
www.heating.danfoss.us