

## Data Sheet

# Proportional Valve Group

## PVSKM 128/256

The PVSKM full flow cut-off valve is developed to comply with the new functional safety standards. PVSKM is a cost-efficient way to implement a redundant hydraulic architecture for category 2 safety functions.

Applying PVSKM in a PVG valve will offer two independent hydraulic cut-off possibilities for flow to work functions. PVSKM can be placed anywhere in the PVG valve stack to close the entire valve group or just a part of it, depending on the position.

One or more PVSKM valves can be placed in the PVG 128/256 valve assemblies to make the system redundant.



### Features

#### PVSKM Functions

- P-blocked (neutral), safety function, blocking flow to downstream PVG sections.
- P-PVG (There is connection to P port (P2) at the same time as P to P (PVG) is open)
- P-HPCO, oil flow supply for another external valve
- Aux function (optional)\*

#### HPCO

- PVSKM module can deliver flow up to 300 L/min.\*\*
- PVSKM module can be used with both closed center and open center valves connected to the HPCO port.

#### Additional Features

- Interface to Standard PVM 256
- HPCO port (BSP G1")
- Aux port for external pilot pressure (max. 350 Bar) e.g., brake release etc.
- Aux port includes SDC10-3 cavity facilitating optional Integrated cartridge valve.

(PVSKM will be delivered from the factory with a cavity plug. Cartridge valve will have to be ordered separately by the customer)

---

Comprehensive technical literature is online at [www.danfoss.com](http://www.danfoss.com)

---

Please refer to the PVE256 and PVHC256 reaction time when choosing actuator

---

\* Release pressure for over center valves / brakes / charge pressure for piston motors / lubrication circuit

\*\* Please see graph for HPCO and flow above 300 l/min

Technical Data for PVG 128/256 PVSKM

Max. P-port cont.	Max. P-port Int.	Max. T pressure static/dynamic	Max. Rated flow HPCO*	Max. Rated flow with PVP128 OC P-P2	Max. Aux press.	Max Aux Flow
350 bar [5076 psi]	400 bar [5800 psi]	25/40 bar [363/580 psi]	300 l/min*	400 l/min	350 bar	40 l/min

\* Please see graph for HPCO

PVG 128/256 PVSKM

Part Number	Threaded port	Aux-Facility	Aux Port	HPCO Port	P2 Port
<b>11202464</b>	BSP	Yes**	G1/2"	G 1"	G 1-1/4"

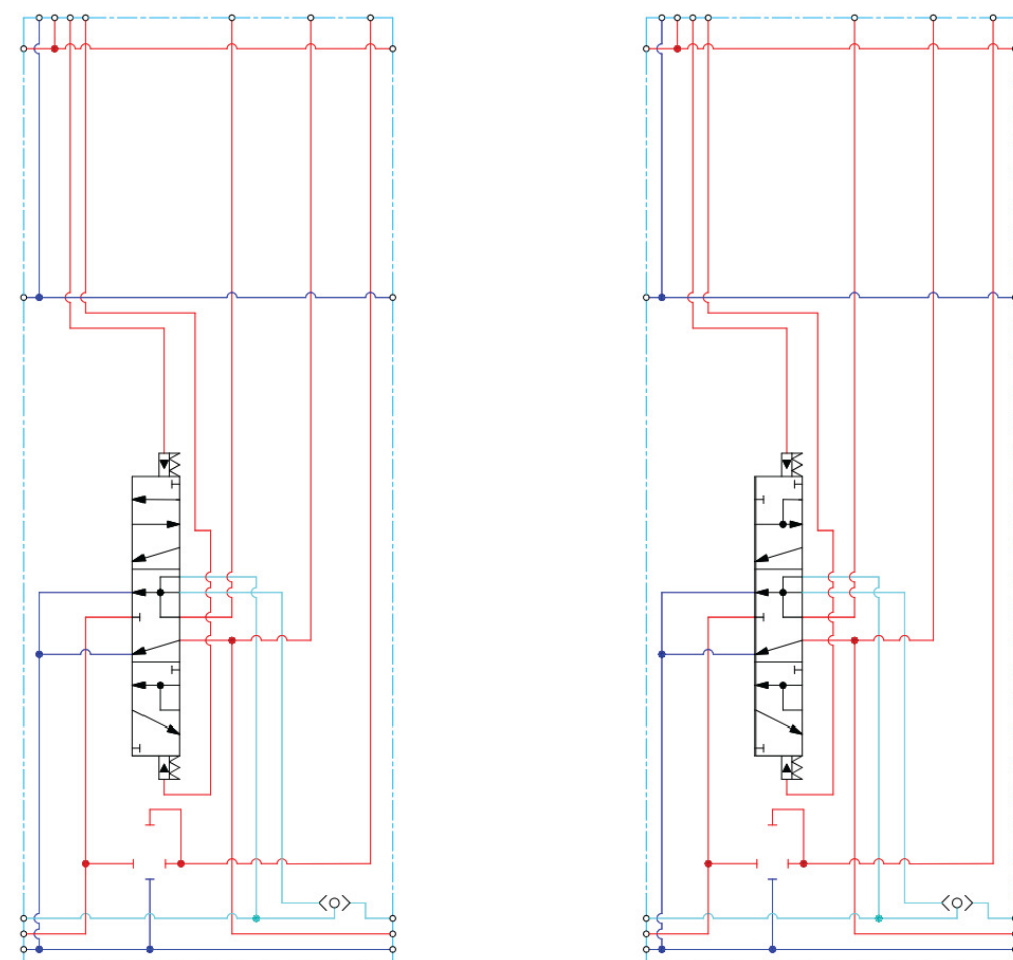
\*\* By default, the optional Aux cavity will be delivered plugged from the Factory

Spools for PVSKM for CC or OC valve systems connected to HPCO port

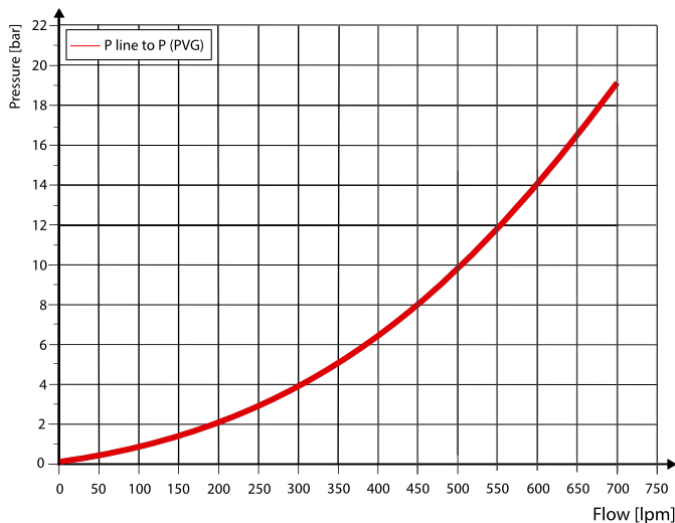
Part Number	PVE	CC	OC
<b>11225407</b>	Yes	x	
<b>11225408</b>	Yes		x

Schematics for PVSKM 128/256

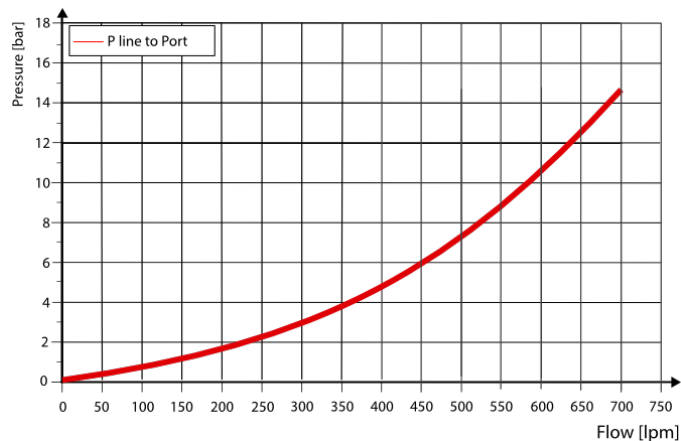
Schematics for PVSKM 128/256



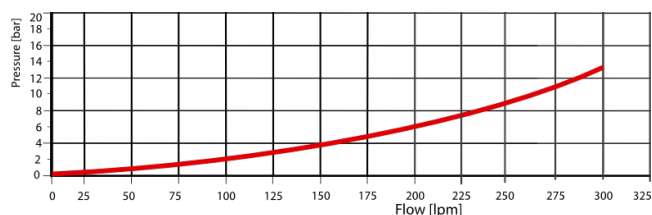
Pressure drop P-PVG with variable pump



Pressure drop PVSKM P2 port



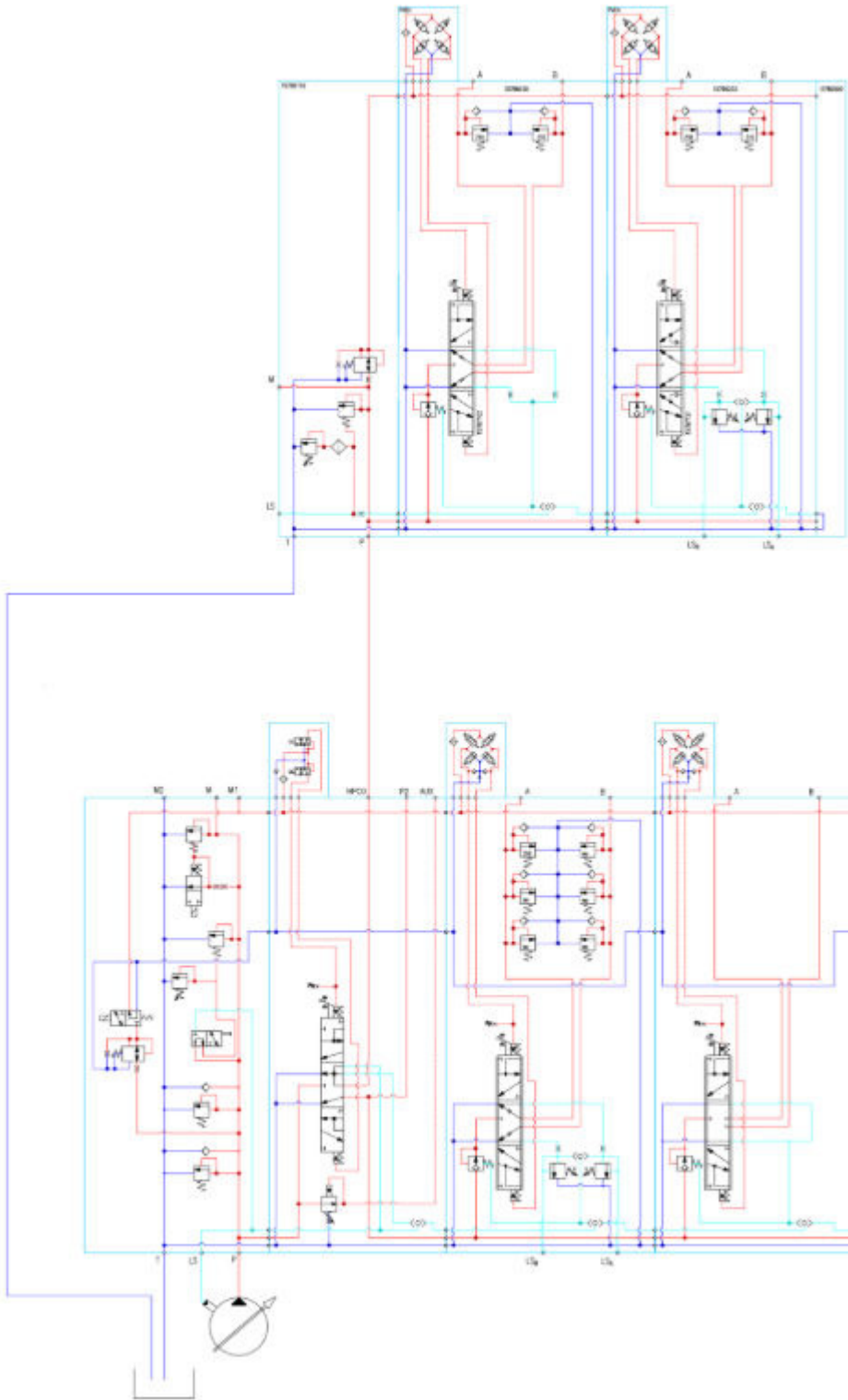
HF PVSKM Pline to HPCO port pressure losses trendline



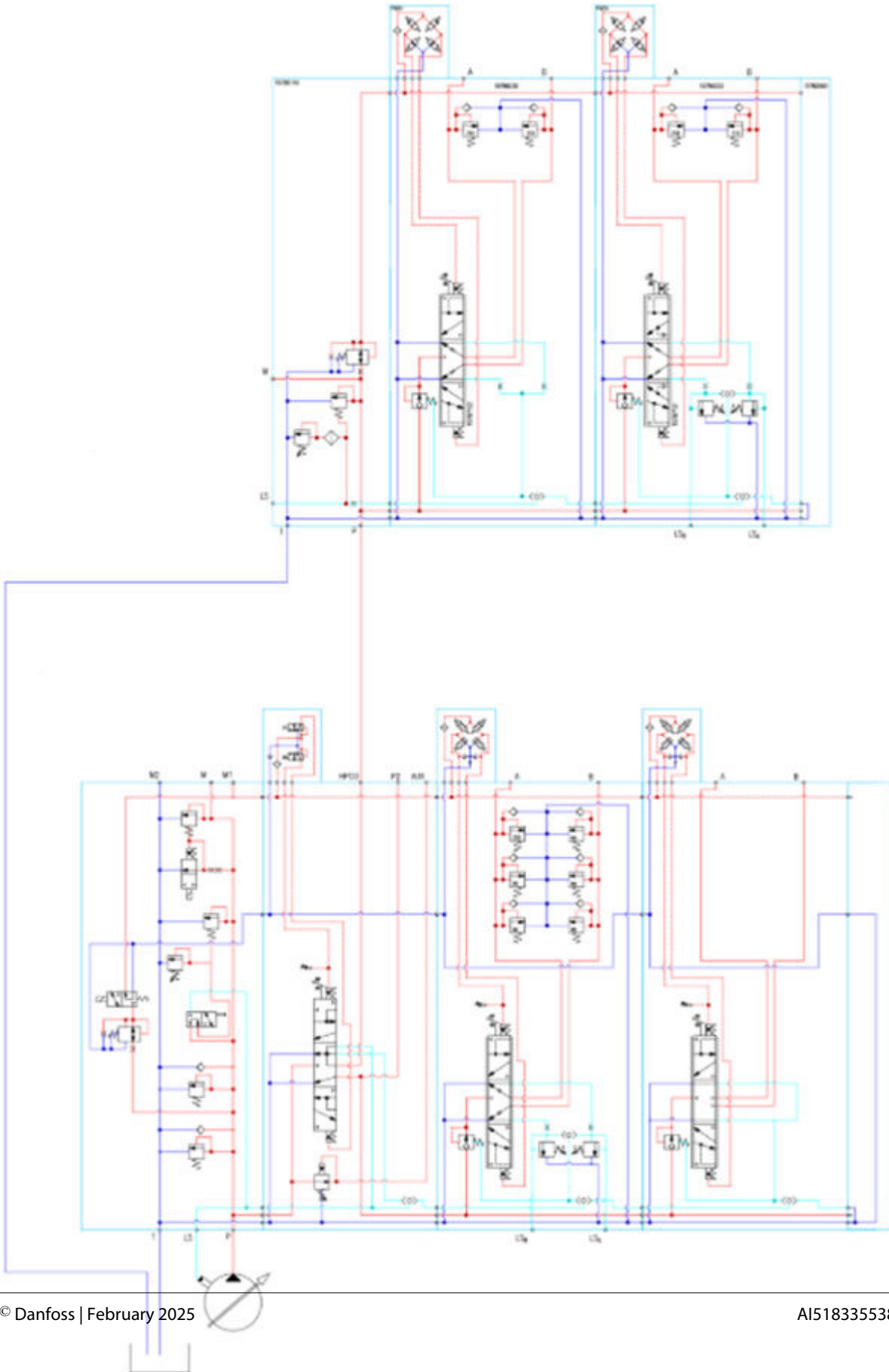
For rated flow for PVB128/256 ensure margin pressure of 15 bar after the PVSKM256.

This is done by adding the pressure drop, from the curve at the required flow, to the pump margin.

Schematic for PVG 128/256 valve group with PVSKM and External Open Center PVF connected to HPCO



Schematic for PVG 128/256 valve group with extern Closed Center PVG



Dimensions for PVSKM 128/256

