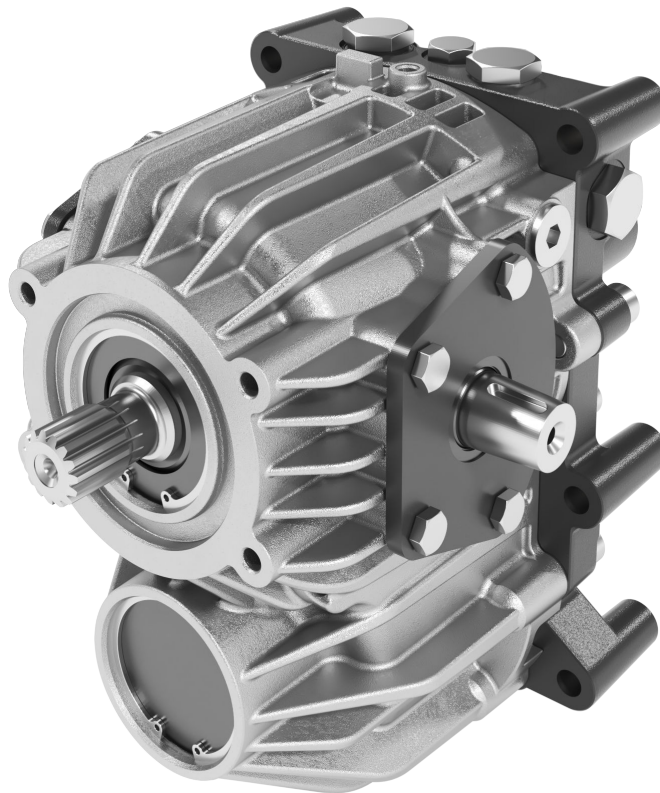


Parts Manual

LDU32

Closed Circuit Axial Piston Transmission



Revision history*Table of revisions*

Date	Changed	Rev
February 2025	the first edition	0101

Contents

General information

Service Parts Identification.....	4
Nameplate.....	4
Date code.....	5
About service bulletins.....	5
Procedure to identify a part.....	5
General.....	5
Example of a Part Identification.....	5
Order code.....	6

Variable Pump & Fixed Motor

Displacement.....	7
Valve Plate.....	9
Control Arm (Left).....	11
Control Arm (Right).....	13
Pump Shaft.....	15
Motor Shaft.....	19
Center Section.....	21
Charge Pressure Relief Valve.....	23
High Pressure Relief Valve (Left).....	25
High Pressure Relief Valve (Right).....	28
Special Hardware.....	31

General information

Service Parts Identification

The following information and procedure is used to identify the module group, item number, manufacture date, part number, and part name of the parts included in the LDU32 Closed Circuit Axial Piston Transmission.

The parts listed include all parts which may be used when performing either "Minor Repairs", "Major Repairs" or "Conversions" on the LDU32 transmission unit.

Nameplate

Each unit will have a nameplate affixed to the housing. The nameplate will include the following information:

Model Number/Identification Number

The Danfoss model/ident number is used by the factory in manufacturing. On repeat orders, a complete unit can be ordered by the model/ident number.

Serial Number

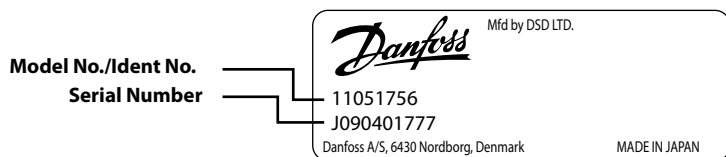
The Danfoss serial number is used to identify the manufacture date and the unit sequence in the build. The serial number is also used to identify the units warranty time period.

The letter code indicates the location of original manufacture (assembly). "J" indicates the unit was originally assembled in Osaka, Japan.

The first number (2 digits) indicates the year of manufacture. ("09" would indicate the unit was manufactured in 2009).

The second number (2 digits) indicates the calendar week of manufacture.

The third number (5 digits) is a sequential number used to identify a specific unit.



P400719

General information

Date code

The date code is defined as the year and week of manufacture. The same item number may list more than one part number. This indicates that there is more than one configuration for that item number. You will see that there are different date codes for the different part numbers. Find the date code of your unit from the nameplate to determine which service part number you need to order.

Example: The service part desired is item G30

Order Code	Item	Date Begin	Date End	Part Number	Part Name	Qty. per Model/Kit
80	G30	89-17		8000243	End cap gasket	1
	G30		89-16	8000151	End cap gasket (SB-1995-006)	1

All units using this order code with a date code prior to 89-17 must use part number "8000151." All units with a date code of 89-17 and newer must use part number "8000243."

About service bulletins

A Service Bulletin Number (SB-____-____) may follow the "Part Name" of the part you desire. You must read that Service Bulletin prior to ordering that part. The information contained in these Service Bulletins, as of the print date of this bulletin, are included at the end of this manual. Service Bulletins contain more detailed information such as interchangeability, what additional parts are involved, etc. It is suggested that you add additional Service Bulletins to this manual as you receive them.

Procedure to identify a part

General

The modular design of LDU32 units results in a simplified service parts list and part number identification procedure.

The same item numbers are used for same part names on all units within a product type. (Example: The lip seal – Item F115 has the same item number on all units.)

Example of a Part Identification

The nameplate on a LDU32 unit has an Order Code of LDU 32D RA RA AB E E N 08 N 14N 14N NNN NNN.

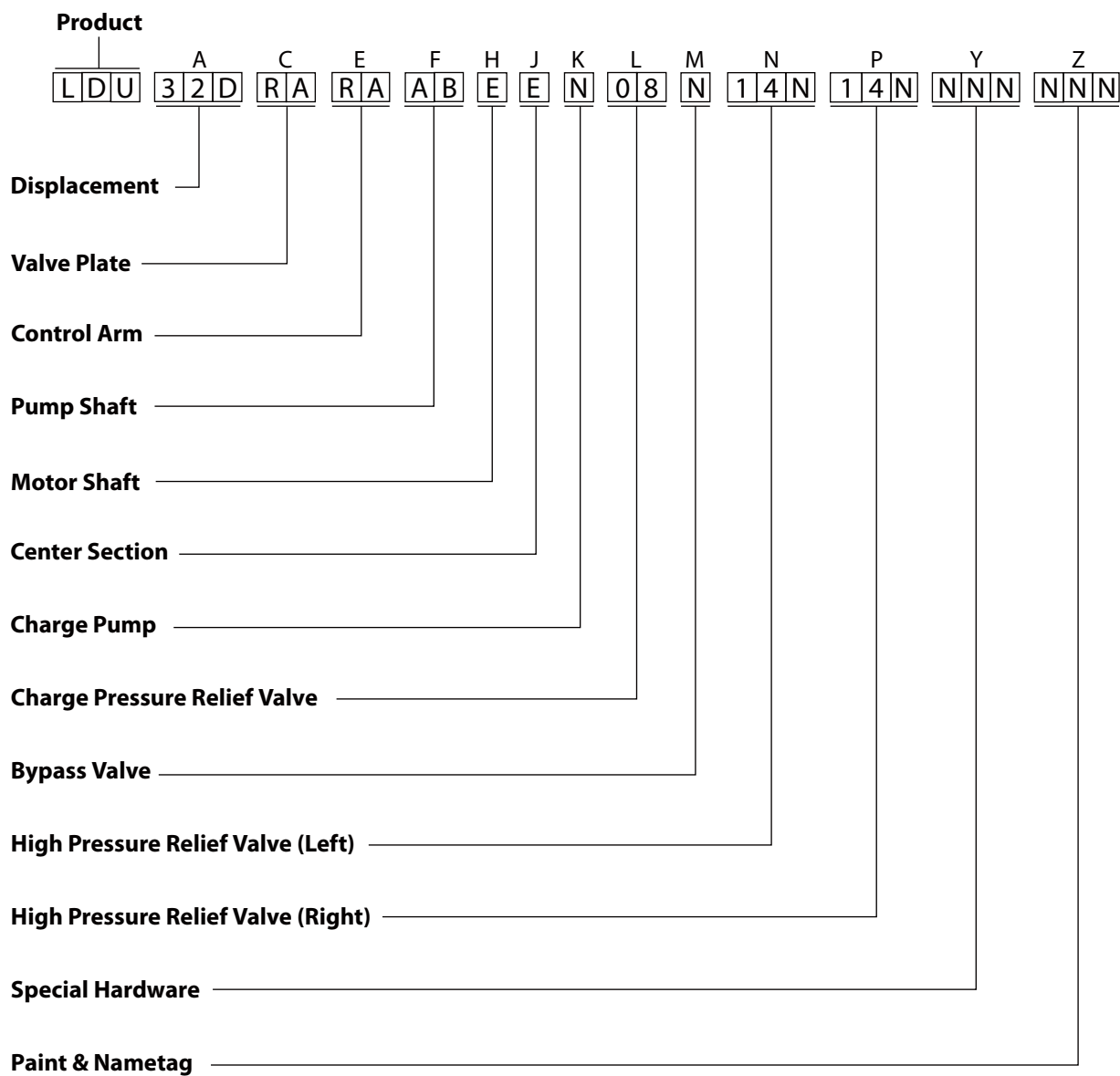
Use the following procedures to determine the part number of the drive shafts used on this unit.

Referring to the Pump Shaft module in the Order Code, the pump shaft option for this unit is identified by the code "AB". (LDU 32D RA RA AB E E N 08 N 14N 14N NNN NNN).

Referring to the Service Parts List, find the Pump Shaft group. Next find the order code that relates to this unit, which is "AB". The pump shaft is found to be item F100 and part number 11087974.

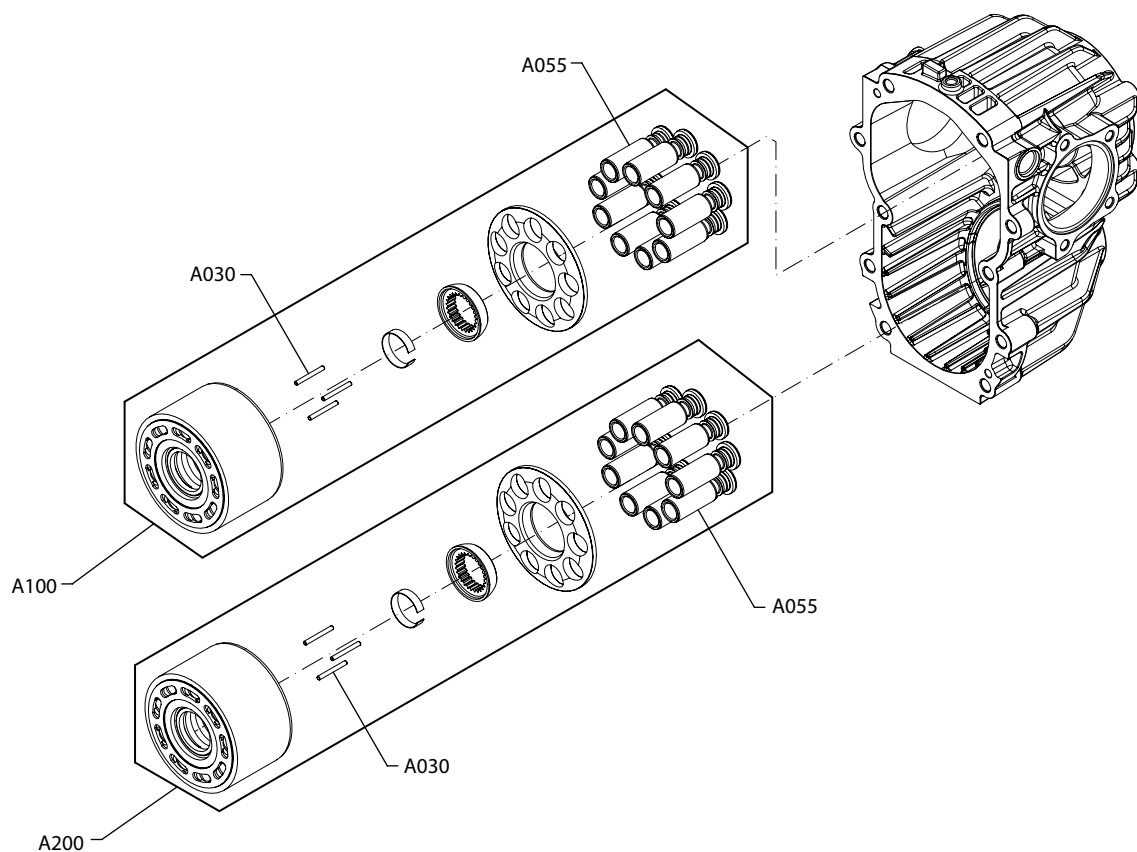
General information

Order code



Variable Pump & Fixed Motor

Displacement

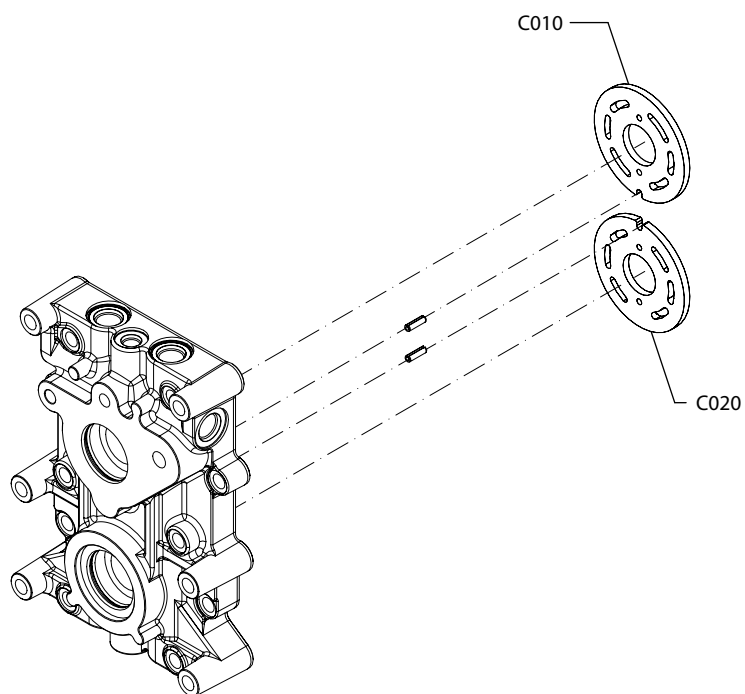


Variable Pump & Fixed Motor*Displacement*

Order Code	Item	Date Begin	Date End	Part Number	Part Name	Qty. per Model/Kit
32D	A100	16-09		1734305-01 (DSD OSK)	CYL BLK KIT (PVM32)	1
	A100	17-01		11169302 (AMS)	31.5CC CYLINDER BLOCK KIT PM	1
	A200	16-09		1734305-01 (DSD OSK)	CYL BLK KIT (PVM32)	1
	A200	17-01		11169302 (AMS)	31.5CC CYLINDER BLOCK KIT PM	1
	A030	13-01		11129964 (DSD OSK)	PIN(RETAINER HOLD DOWN)	3
	A030	06-01		4700091 (AMS)	PIN-SLIPPER HOLD DOWN	3
	A055	11-02		11093132	32cc PISTON ASSY	9

Variable Pump & Fixed Motor

Valve Plate

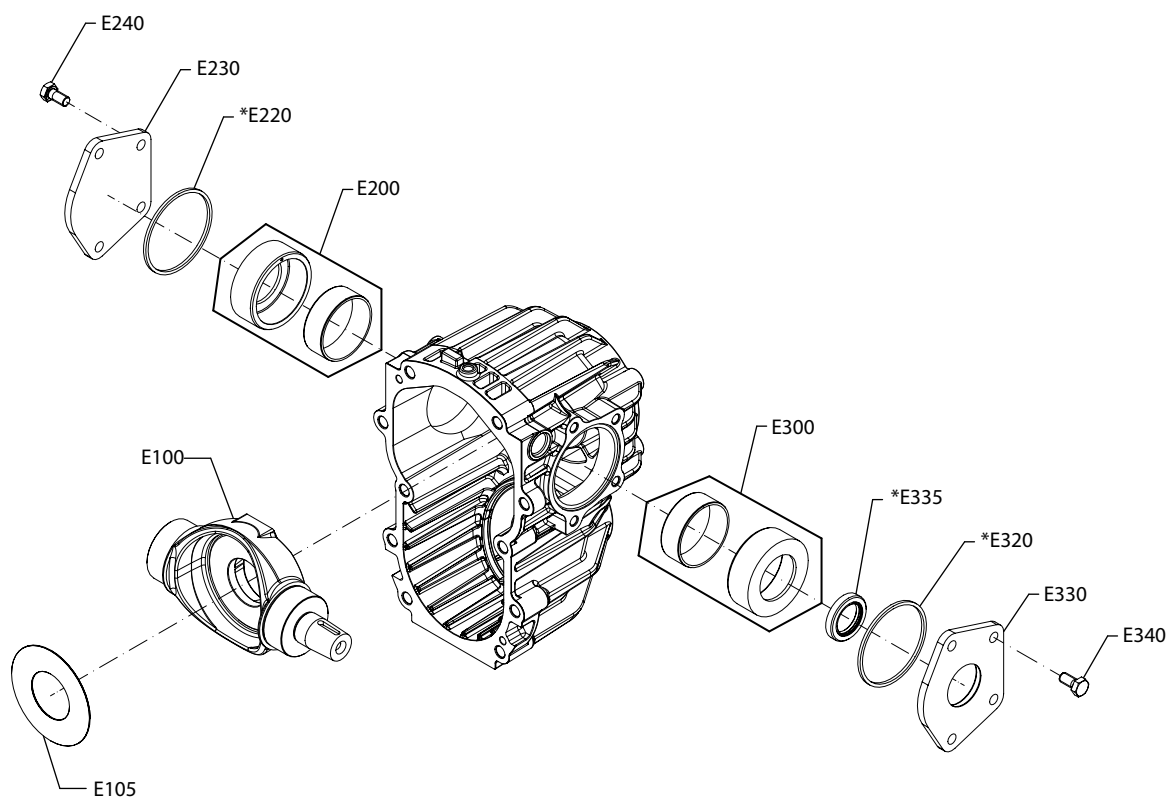


Variable Pump & Fixed Motor*Valve Plate*

Order Code	Item	Date Begin	Date End	Part Number	Part Name	Qty. per Model/Kit
LA	C010	00-00		new	VALVEPLATE-PUMP, CP6, CCW, LDU32	1
	C020	08-07		1724173	VALVE PLATE (MOTOR,SP)	1
RA	C010	08-07		1724172	VALVE PLATE (CP6,INDEX0,SP)	1
	C020	08-07		1724173	VALVE PLATE (MOTOR,SP)	1

Variable Pump & Fixed Motor

Control Arm (Left)



(Left)

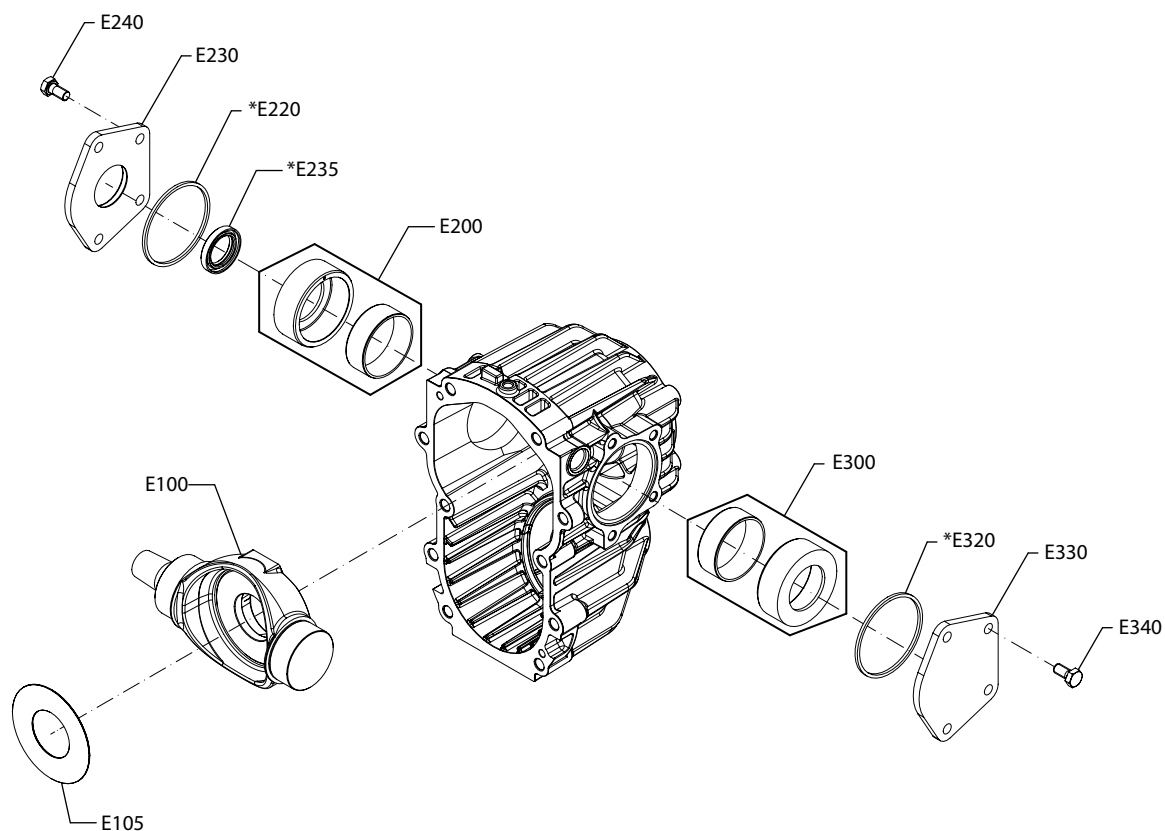
*=Included in overhaul seal kit Q210

Variable Pump & Fixed Motor
Control Arm (Left)

Order Code	Item	Date Begin	Date End	Part Number	Part Name	Qty. per Model/Kit
LA	E100	08-01		1715005-03	SWASH PLATE (JIS TAPER)	1
	E105	08-07		1735392	PLATE THRUST	1
	E200	08-21		11045229	JOURNAL BRG CARRIER ASSY	1
	E220	08-01		9004300-1460	O-RING RECT, HMS151 2.612x0.099 N-NBR70	1
	E230	09-06		11046056	COVER TRUNNION-A BLACK OXIDE FINISH	1
	E240	08-01		9007210-0804	SCREW-HEX, DIN933 M 8x 16 10.9 - 9007210	4
	E300	08-21		11045229	JOURNAL BRG CARRIER ASSY	1
	E320	08-01		9004300-1460	O-RING RECT, HMS151 2.612x0.099 N-NBR70	1
	E330	09-01		11046057	COVER TRUNNION-B BLACK OXIDE FINISH	1
	E335	08-07		5000604	SEAL-TRUNNION SHAFT	1
	E340	08-01		9007210-0804	SCREW-HEX, DIN933 M 8x 16 10.9 - 9007210	4

Variable Pump & Fixed Motor

Control Arm (Right)



(Right)

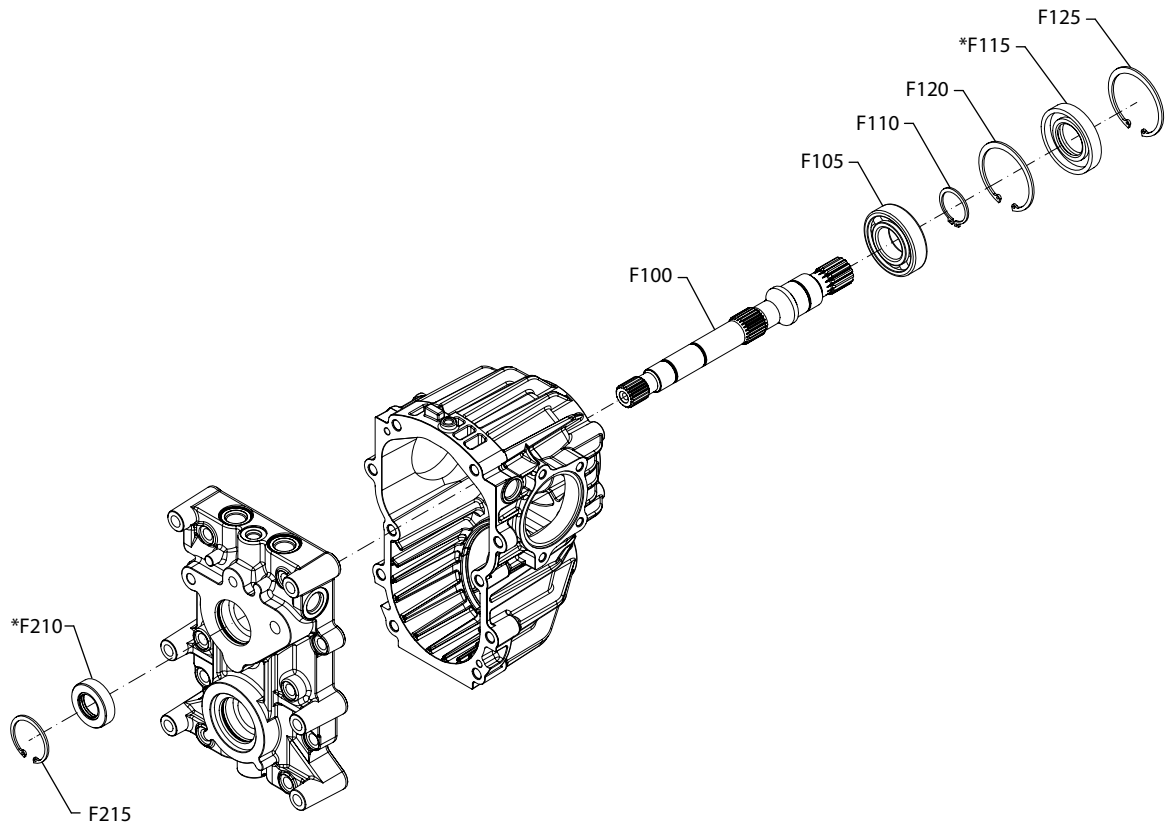
*=Included in overhaul seal kit Q210

Variable Pump & Fixed Motor
Control Arm (Right)

Order Code	Item	Date Begin	Date End	Part Number	Part Name	Qty. per Model/Kit
RA	E100	08-01		1715005-03	SWASH PLATE (JIS TAPER)	1
	E105	08-07		1735392	PLATE THRUST	1
	E200	08-21		11045229	JOURNAL BRG CARRIER ASSY	1
	E220	08-01		9004300-1460	O-RING RECT, HMS151 2.612x0.099 N-NBR70	1
	E230	09-01		11046057	COVER TRUNNION-A BLACK OXIDE FINISH	1
	E235	08-07		5000604	SEAL-TRUNNION SHAFT	1
	E240	08-01		9007210-0804	SCREW-HEX, DIN933 M 8x 16 10.9 - 9007210	4
	E300	08-21		11045229	JOURNAL BRG CARRIER ASSY	1
	E320	08-01		9004300-1460	O-RING RECT, HMS151 2.612x0.099 N-NBR70	1
	E330	09-06		11046056	COVER TRUNNION-B BLACK OXIDE FINISH	1
	E340	08-01		9007210-0804	SCREW-HEX, DIN933 M 8x 16 10.9 - 9007210	4

Variable Pump & Fixed Motor

Pump Shaft



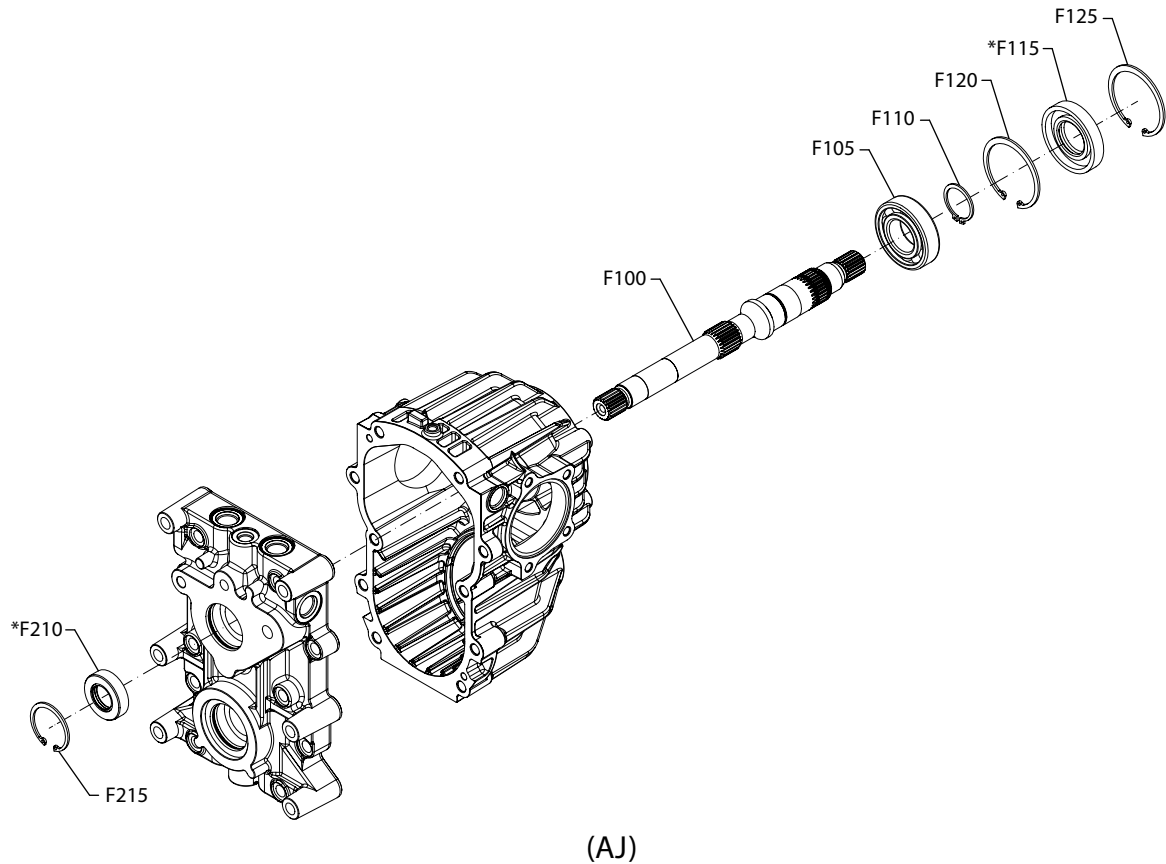
(AB)

*=Included in overhaul seal kit Q210

Variable Pump & Fixed Motor
Pump Shaft (AB)

Order Code	Item	Date Begin	Date End	Part Number	Part Name	Qty. per Model/Kit
AB	F100	10-42		11087974	PUMP SHAFT LDU32 15T	1
	F105	08-01		SP3320	BALL BEARING (TMB206)	1
	F110	08-07		FBD030	RING-RTNG, EXT JISB2804 30x1.5	1
	F115	14-48		11160069	OIL SEAL (NAK TCN1 30X62X11)	1
	F120	08-07		FBE062	RING-RTNG, INT JISB2804 62x2	1
	F125	08-07		FBE062	RING-RTNG, INT JISB2804 62x2	1
	F210	08-07		SP3351	OIL SEAL (NAK TCN1 22X42X11)	1
	F215	08-07		FBE042	RING-RTNG, INT JISB2804 42x1.75	1

Variable Pump & Fixed Motor



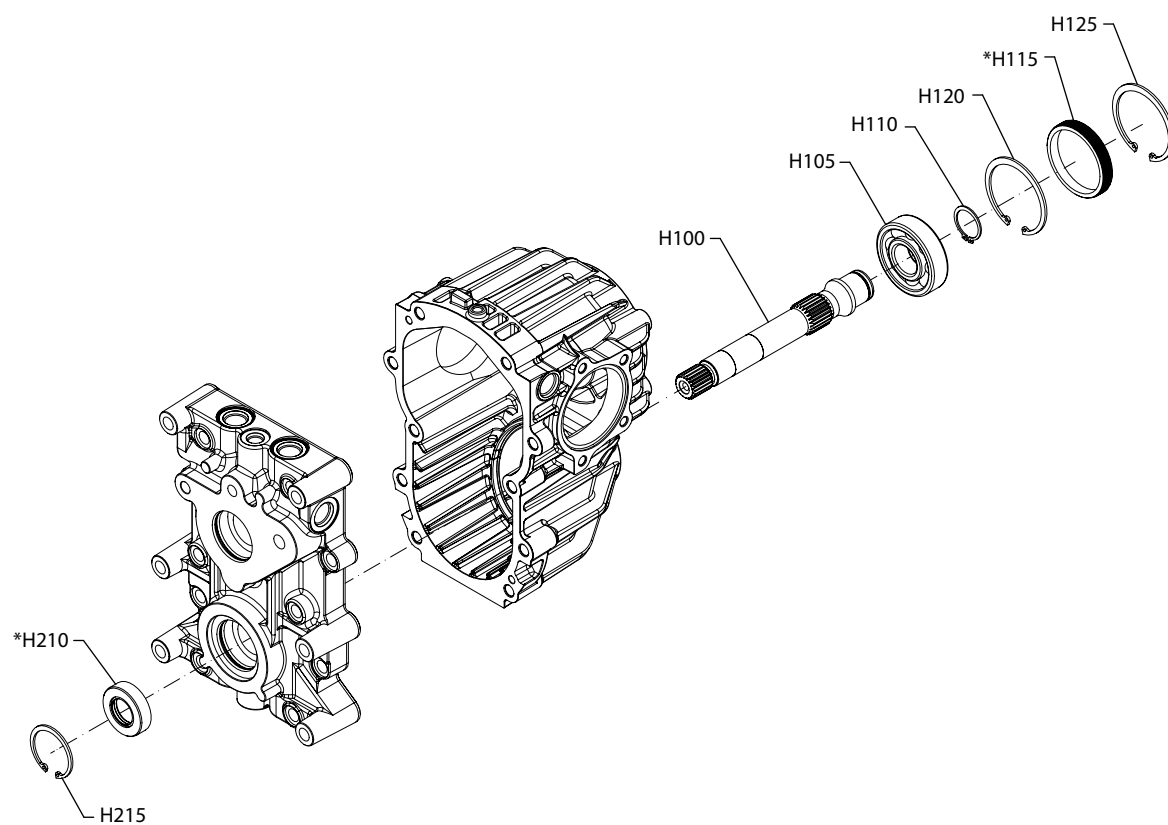
*=Included in overhaul seal kit Q210

Variable Pump & Fixed Motor
Pump Shaft (AJ)

Order Code	Item	Date Begin	Date End	Part Number	Part Name	Qty. per Model/Kit
AJ	F100	08-07		1716143	PUMP SHAFT(WITH GEAR)	1
	F105	08-01		SP3320	BALL BEARING (TMB206)	1
	F110	08-07		FBD030	RING-RTNG, EXT JISB2804 30x1.5	1
	F115	08-01		SP3350	OIL SEAL (NAK TCN1 30X62X11)	1
	F120	08-07		FBE062	RING-RTNG, INT JISB2804 62x2	1
	F125	08-07		FBE062	RING-RTNG, INT JISB2804 62x2	1
	F210	08-07		SP3351	OIL SEAL (NAK TCN1 22X42X11)	1
	F215	08-07		FBE042	RING-RTNG, INT JISB2804 42x1.75	1

Variable Pump & Fixed Motor

Motor Shaft



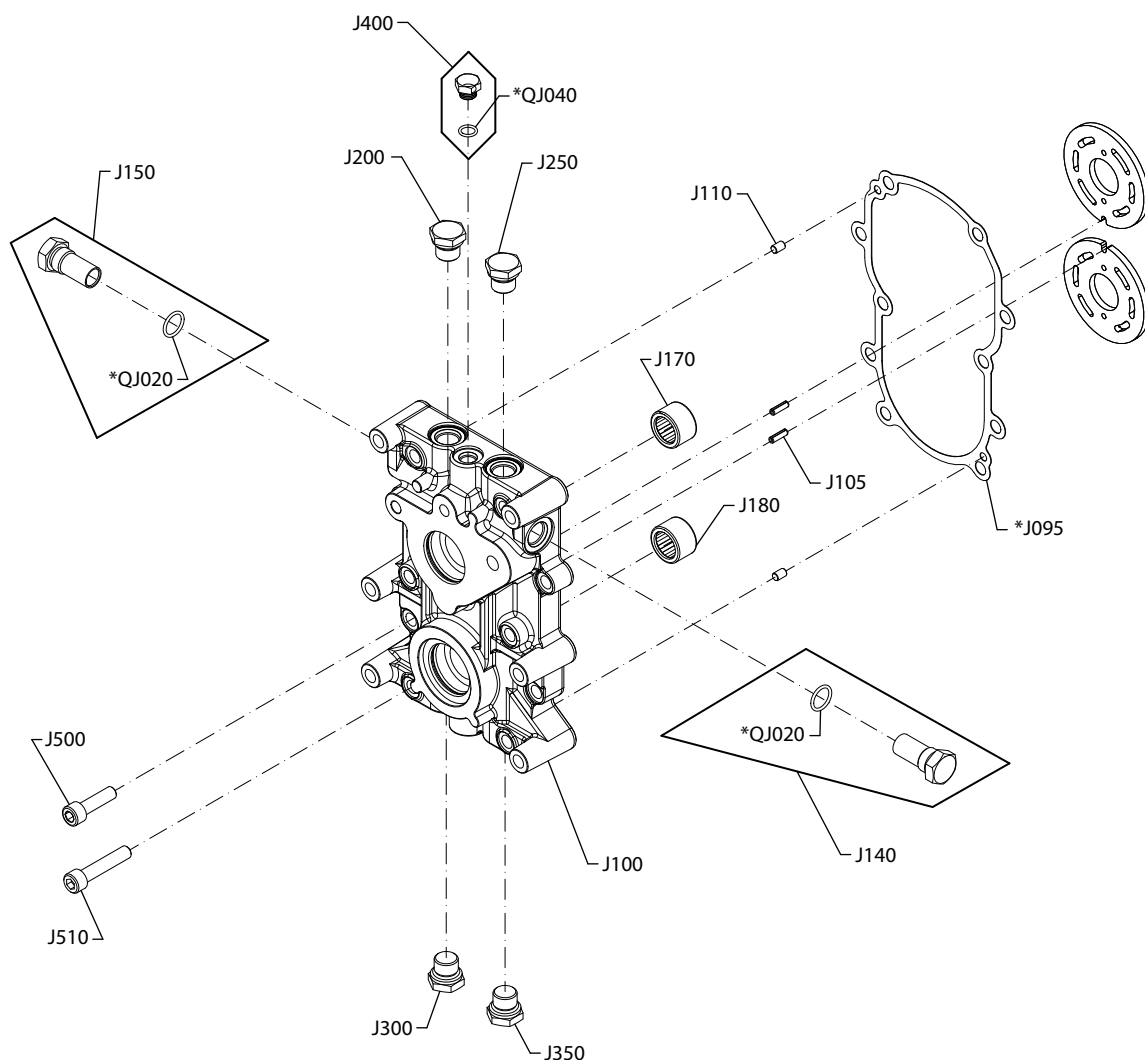
*=Included in overhaul seal kit Q210

Variable Pump & Fixed Motor
Motor Shaft

Order Code	Item	Date Begin	Date End	Part Number	Part Name	Qty. per Model/Kit
E	H100	08-01		1724145	SHAFT MOTOR	1
	H105	08-01		SP3365	BALL BEARING (TMB305)	1
	H110	08-07		FBD025	RING-RTNG, EXT JISB2804 25x1.2	1
	H115	08-01		SP3352	BORE PLUG (NAK EG 62X10)	1
	H120	08-07		FBE062	RING-RTNG, INT JISB2804 62x2	1
	H125	08-07		FBE062	RING-RTNG, INT JISB2804 62x2	1
	H210	08-07		SP3351	OIL SEAL (NAK TCN1 22X42X11)	1
	H215	08-07		FBE042	RING-RTNG, INT JISB2804 42x1.75	1

Variable Pump & Fixed Motor

Center Section



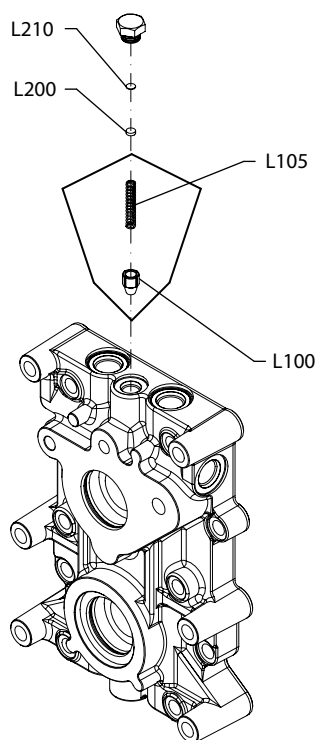
*=Included in overhaul seal kit Q210

Variable Pump & Fixed Motor
Center Section

Order Code	Item	Date Begin	Date End	Part Number	Part Name	Qty. per Model/Kit
E	J095	08-07		1724178	GASKET (627IK)	1
	J100	08-07		1716187-01	CENTER SECTION, LDU32	1
	J105	08-07		9004700-1910	PIN-SLTDD SPRG,ANSIB18.8.2 0.1875x0.625	2
	J110	08-07		9004800-2506	PIN-STRAIGHT, ASMEB1882 0.2503x0.375	2
	J140	10-09		11070582	PLUG ASSY-SCR, LDU32	1
	J150	10-09		11070582	PLUG ASSY-SCR, LDU32	1
	J170	09-08		11060624 (DSD OSK)	BEARING-NEEDLE, .875 X 1.187 X .750	1
	J170	06-01		5000046 (AMS)	BEARING-NEEDLE, .875 X 1.187 X .750	1
	J180	09-08		11060624 (DSD OSK)	BEARING-NEEDLE, .875 X 1.187 X .750	1
	J180	06-01		5000046 (AMS)	BEARING-NEEDLE, .875 X 1.187 X .750	1
	J200	10-09		11070583 (DSD OSK)	PLUG ASSY-HEX HD, M18	1
	J200	06-01		5000570 (AMS)	PLUG ASSY-SOC,ISO6149 M18x1.5 NBR90 5.8	1
	J250	10-09		11070583 (DSD OSK)	PLUG ASSY-HEX HD, M18	1
	J250	06-01		5000570 (AMS)	PLUG ASSY-SOC,ISO6149 M18x1.5 NBR90 5.8	1
	J300	10-09		11070583 (DSD OSK)	PLUG ASSY-HEX HD, M18	1
	J300	06-01		5000570 (AMS)	PLUG ASSY-SOC,ISO6149 M18x1.5 NBR90 5.8	1
	J350	10-09		11070583 (DSD OSK)	PLUG ASSY-HEX HD, M18	1
	J350	06-01		5000570 (AMS)	PLUG ASSY-SOC,ISO6149 M18x1.5 NBR90 5.8	1
	J400	08-07		1030155-SA	PLUG ASSY	1
	J500	08-09		520545SK	SCREW-SOC, ISO4762 M10x35 12.9	4
	J510	08-07		AAM1005001	SCREW-SOC HD,M10X50 JISB1176	6
	QJ020	08-07		9004201-5000	O-RING, HMS151 0.644x0.087 N-NBR90	2
	QJ040	08-07		9004201-3100	O-RING, HMS151 0.414x0.072 N-NBR90	1

Variable Pump & Fixed Motor

Charge Pressure Relief Valve

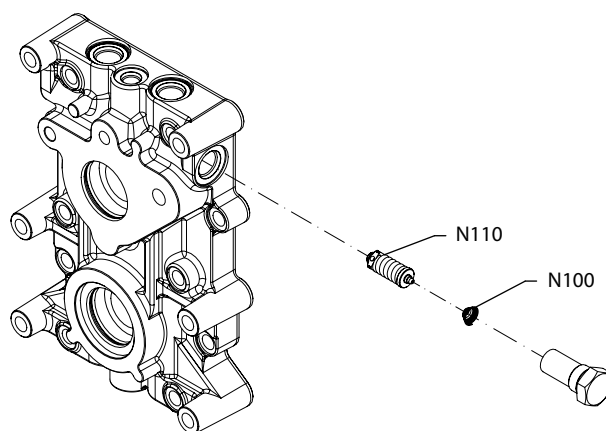


Variable Pump & Fixed Motor*Charge Pressure Relief Valve*

Order Code	Item	Date Begin	Date End	Part Number	Part Name	Qty. per Model/Kit
08	L100	08-01		1040213	CONE RELIEF VALVE	1
	L105	08-07		1040024	SPRING RELIEF VALVE	1
	L200	10-01		11079743	SHIM 6.35x2	1
	L210	11-01		3100069-4	SHIM 6.35x0.50	1

Variable Pump & Fixed Motor

High Pressure Relief Valve (Left)



(Left)

Variable Pump & Fixed Motor
High Pressure Relief Valve (Left)

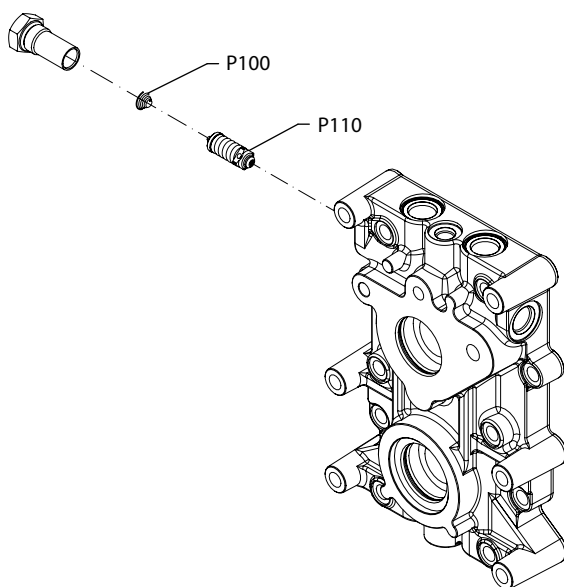
Order Code	Item	Date Begin	Date End	Part Number	Part Name	Qty. per Model/Kit
14N	N100	18-10		11192689	SPRING-COMPRESSION, CONICAL	1
	N110	08-23		3103375-0140	VALVE ASSY-SCR, 140BAR/2030PSI	1
14A	N100	18-10		11192689	SPRING-COMPRESSION, CONICAL	1
	N110	09-29		11068596	VALVE-SCR,140BAR/2030PSI W/0.85MM ORIFICE	1
17N	N100	18-10		11192689	SPRING-COMPRESSION, CONICAL	1
	N110	08-07		3103375-0175	VALVE ASSY-SCR, 175BAR/2538PSI	1
17A	N100	18-10		11192689	SPRING-COMPRESSION, CONICAL	1
	N110	08-07		3103375-0175	VALVE ASSY-SCR, 175BAR/2538PSI	1
21N	N100	18-10		11192689	SPRING-COMPRESSION, CONICAL	1
	N110	08-07		3103375-0210	VALVE ASSY-SCR, 210BAR/3045PSI	1
21A	N100	18-10		11192689	SPRING-COMPRESSION, CONICAL	1
	N110	09-29		11066872	VALVE-SCR,210BAR/3045PSI W/0.85MM ORIFICE	1
23N	N100	18-10		11192689	SPRING-COMPRESSION, CONICAL	1
	N110	09-29		3103375-0230	VALVE ASSY-SCR, 230BAR/3335PSI	1
23A	N100	18-10		11192689	SPRING-COMPRESSION, CONICAL	1
	N110	11-43		11104696	VALVE-SCR,230BAR/3335PSI W/0.85MM ORIFICE	1
25N	N100	18-10		11192689	SPRING-COMPRESSION, CONICAL	1
	N110	08-07		3103375-0250	VALVE ASSY-SCR, 250BAR/3625PSI	1
25A	N100	18-10		11192689	SPRING-COMPRESSION, CONICAL	1
	N110	09-29		11065546	VALVE-SCR,250BAR/3625PSI W/0.85MM ORIFICE	1
28N	N100	18-10		11192689	SPRING-COMPRESSION, CONICAL	1
	N110	08-07		3103375-0280	VALVE ASSY-SCR, 280BAR/4060PSI	1
28A	N100	18-10		11192689	SPRING-COMPRESSION, CONICAL	1
	N110	09-29		11065532	VALVE-SCR,280BAR/4060PSI W/0.85MM ORIFICE	1
30N	N100	18-10		11192689	SPRING-COMPRESSION, CONICAL	1
	N110	08-07		3103375-0300	VALVE ASSY-SCR, 300BAR/4350PSI	1
30A	N100	18-10		11192689	SPRING-COMPRESSION, CONICAL	1
	N110	09-29		11065535	VALVE-SCR,300BAR/4350PSI W/0.85MM ORIFICE	1

Variable Pump & Fixed Motor

32N	N100	18-10		11192689	SPRING-COMPRESSION, CONICAL	1
	N110	08-07		3103375-0325	VALVE ASSY-SCR, 325BAR/4712PSI	1
32A	N100	18-10		11192689	SPRING-COMPRESSION, CONICAL	1
	N110	09-29		11065541	VALVE-SCR,325BAR/4712PSI W/0.85MM ORIFICE	1
34N	N100	18-10		11192689	SPRING-COMPRESSION, CONICAL	1
	N110	08-07		3103375-0345	VALVE ASSY-SCR, 345BAR/5000PSI	1
34A	N100	18-10		11192689	SPRING-COMPRESSION, CONICAL	1
	N110	09-29		11065545	VALVE-SCR,345BAR/5000PSI W/0.85MM ORIFICE	1
00N	N100	18-10		11192689	SPRING-COMPRESSION, CONICAL	1
	N110	08-07		3103348	POPPET-CHECK VALVE	1

Variable Pump & Fixed Motor

High Pressure Relief Valve (Right)



(Right)

Variable Pump & Fixed Motor
High Pressure Relief Valve (Right)

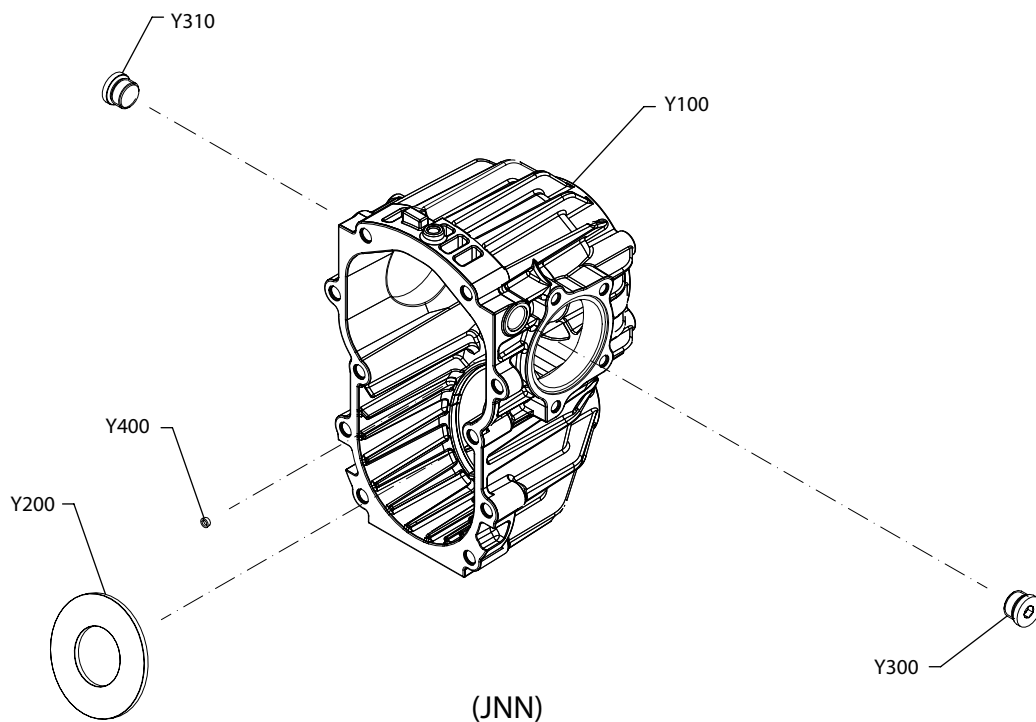
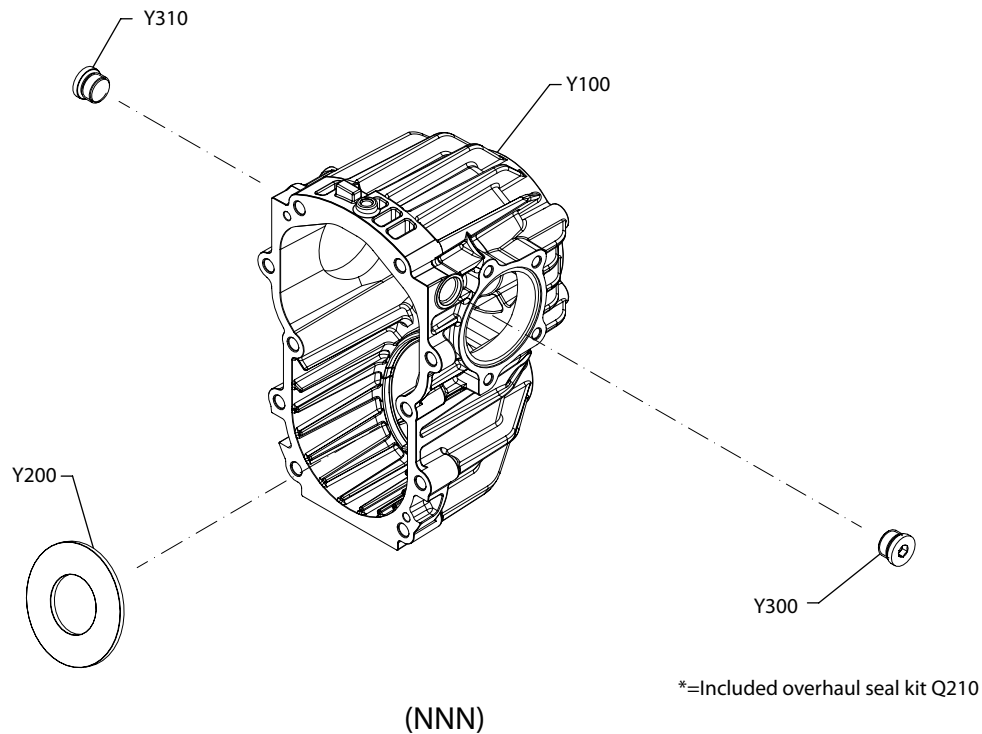
Order Code	Item	Date Begin	Date End	Part Number	Part Name	Qty. per Model/Kit
14N	P100	18-10		11192689	SPRING-COMPRESSION, CONICAL	1
	P110	08-23		3103375-0140	VALVE ASSY-SCR, 140BAR/2030PSI	1
14A	P100	18-10		11192689	SPRING-COMPRESSION, CONICAL	1
	P110	09-29		11068596	VALVE-SCR,140BAR/2030PSI W/0.85MM ORIFICE	1
17N	P100	18-10		11192689	SPRING-COMPRESSION, CONICAL	1
	P110	08-07		3103375-0175	VALVE ASSY-SCR, 175BAR/2538PSI	1
17A	P100	18-10		11192689	SPRING-COMPRESSION, CONICAL	1
	P110	09-29		11068588	VALVE-SCR,175BAR/2538PSI W/0.85MM ORIFICE	1
21N	P100	18-10		11192689	SPRING-COMPRESSION, CONICAL	1
	P110	08-07		3103375-0210	VALVE ASSY-SCR, 210BAR/3045PSI	1
21A	P100	18-10		11192689	SPRING-COMPRESSION, CONICAL	1
	P110	09-29		11066872	VALVE-SCR,210BAR/3045PSI W/0.85MM ORIFICE	1
23N	P100	18-10		11192689	SPRING-COMPRESSION, CONICAL	1
	P110	08-01		3103375-0230	VALVE ASSY-SCR, 230BAR/3335PSI	1
23A	P100	18-10		11192689	SPRING-COMPRESSION, CONICAL	1
	P110	11-43		11104696	VALVE-SCR,230BAR/3335PSI W/0.85MM ORIFICE	1
25N	P100	18-10		11192689	SPRING-COMPRESSION, CONICAL	1
	P110	08-07		3103375-0250	VALVE ASSY-SCR, 250BAR/3625PSI	1
25A	P100	18-10		11192689	SPRING-COMPRESSION, CONICAL	1
	P110	09-29		11065546	VALVE-SCR,250BAR/3625PSI W/0.85MM ORIFICE	1
28N	P100	18-10		11192689	SPRING-COMPRESSION, CONICAL	1
	P110	08-07		3103375-0280	VALVE ASSY-SCR, 280BAR/4060PSI	1
28A	P100	18-10		11192689	SPRING-COMPRESSION, CONICAL	1
	P110	09-29		11065532	VALVE-SCR,280BAR/4060PSI W/0.85MM ORIFICE	1
30N	P100	18-10		11192689	SPRING-COMPRESSION, CONICAL	1
	P110	08-07		3103375-0300	VALVE ASSY-SCR, 300BAR/4350PSI	1
30A	P100	18-10		11192689	SPRING-COMPRESSION, CONICAL	1
	P110	09-29		11065535	VALVE-SCR,300BAR/4350PSI W/0.85MM ORIFICE	1

Variable Pump & Fixed Motor

32N	P100	18-10		11192689	SPRING-COMPRESSION, CONICAL	1
	P110	08-07		3103375-0325	VALVE ASSY-SCR, 325BAR/4712PSI	1
32A	P100	18-10		11192689	SPRING-COMPRESSION, CONICAL	1
	P110	09-29		11065541	VALVE-SCR,325BAR/4712PSI W/0.85MM ORIFICE	1
34N	P100	18-10		11192689	SPRING-COMPRESSION, CONICAL	1
	P110	08-07		3103375-0345	VALVE ASSY-SCR, 345BAR/5000PSI	1
34A	P100	18-10		11192689	SPRING-COMPRESSION, CONICAL	1
	P110	09-29		11065545	VALVE-SCR,345BAR/5000PSI W/0.85MM ORIFICE	1
00N	P100	18-10		11192689	SPRING-COMPRESSION, CONICAL	1
	P110	08-07		3103348	POPPET-CHECK VALVE	1

Variable Pump & Fixed Motor

Special Hardware



P400845

Variable Pump & Fixed Motor
Special Hardware

Order Code	Item	Date Begin	Date End	Part Number	Part Name	Qty. per Model/Kit
NNN	Y100	10-39		11087975	HOUSING MACHINING, LDU32	1
	Y200	08-01		1733663	THRUST PLATE, 3232	1
	Y300	08-07		J9005110-7500	PLUG ASSY-SOC HD, UNF-3/4-16	1
	Y310	08-07		J9005110-7500	PLUG ASSY-SOC HD, UNF-3/4-16	1

JNN	Y100	08-07		1716195-01	HOUSING MACHINING WITH ORIFICE, LDU32	1
	Y200	08-01		1733663	THRUST PLATE, 3232	1
	Y300	08-07		J9005110-7500	PLUG ASSY-SOC HD, UNF-3/4-16	1
	Y310	08-07		J9005110-7500	PLUG ASSY-SOC HD, UNF-3/4-16	1
	Y400	08-07		9803390	SCREEN-FILTER, CONTROL	1

Overhaul Seal Kit

	Q210	09-27		11344644	OVERHAUL SEAL KIT LDU32	1
	E220	09-28		9004300-1460	O-RING RECT, HMS151 2.612x0.099 N-NBR70	1
	E235/E335	09-28		5000604	SEAL-TRUNNION SHAFT	1
	E320	09-28		9004300-1460	O-RING RECT, HMS151 2.612x0.099 N-NBR70	1
	F115	09-28		11160069	OIL SEAL (NOK TCV-X 30X62X11) BLACK	1
	F115	09-28		SP3350	OIL SEAL (NAK TCN1 30X62X11)	1
	F210	09-28		SP3351	OIL SEAL (NAK TCN1 22X42X11)	1
	H115	09-28		SP3352	BORE PLUG (NAK EG 62X10)	1
	H210	09-28		SP3351	OIL SEAL (NAK TCN1 22X42X11)	1
	J095	09-28		1724178	GASKET (627IK)	1
	QJ020	09-28		9004201-5000	O-RING, HMS151 0.644x0.087 N-NBR90	2
	QJ040	09-28		9004201-3100	O-RING, HMS151 0.414x0.072 N-NBR90	1

Products we offer:

- Cylinders
- Electric converters, machines, and systems
- Electronic controls, HMI, and IoT
- Hoses and fittings
- Hydraulic power units and packaged systems
- Hydraulic valves
- Industrial clutches and brakes
- Motors
- PLUS+1® software
- Pumps
- Steering
- Transmissions

Danfoss Power Solutions designs and manufactures a complete range of engineered components and systems. From hydraulics and electrification to fluid conveyance, electronic controls, and software, our solutions are engineered with an uncompromising focus on quality, reliability, and safety.

Our innovative products makes increased productivity and reduced emissions a possibility, but it's our people who turn those possibilities into reality. Leveraging our unsurpassed application know-how, we partner with customers around the world to solve their greatest machine challenges. Our aspiration is to help our customers achieve their vision — and to earn our place as their preferred and trusted partner.

Go to www.danfoss.com or scan the QR code for further product information.

**Hydro-Gear**

www.hydro-gear.com

Daikin-Sauer-Danfoss

www.daikin-sauer-danfoss.com

**Danfoss
Power Solutions (US) Company**
2800 East 13th Street
Ames, IA 50010, USA
Phone: +1 515 239 6000

**Danfoss
Power Solutions GmbH & Co. OHG**
Krokamp 35
D-24539 Neumünster, Germany
Phone: +49 4321 871 0

**Danfoss
Power Solutions ApS**
Nordborgvej 81
DK-6430 Nordborg, Denmark
Phone: +45 7488 2222

**Danfoss
Power Solutions Trading
(Shanghai) Co., Ltd.**
Building #22, No. 1000 Jin Hai Rd
Jin Qiao, Pudong New District
Shanghai, China 201206
Phone: +86 21 2080 6201

Danfoss can accept no responsibility for possible errors in catalogues, brochures and other printed material. Danfoss reserves the right to alter its products without notice. This also applies to products already on order provided that such alterations can be made without subsequent changes being necessary in specifications already agreed. All trademarks in this material are property of the respective companies. Danfoss and the Danfoss logotype are trademarks of Danfoss A/S. All rights reserved.