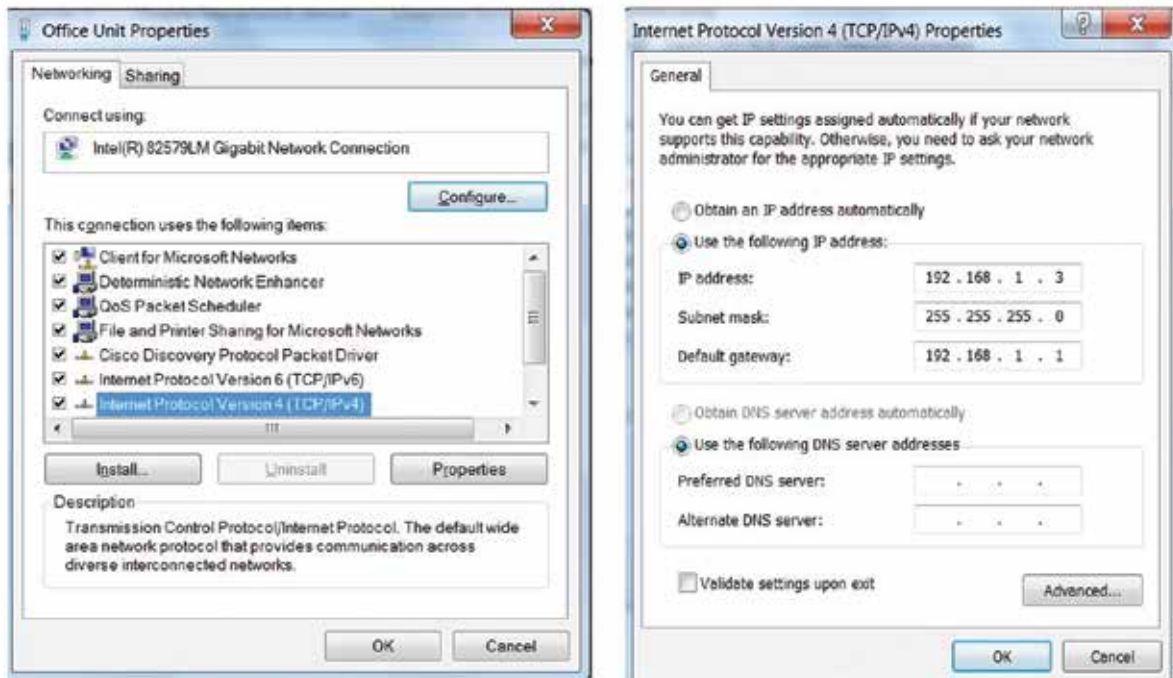


AK-SM 800 CAT 5 Cable Direct Connect Via Ethernet Port

Try using PC temporary unlock feature to modify LAN connection on your laptop. or administrative rights are needed to create or modify existing LAN. Turn off wireless connection using button.

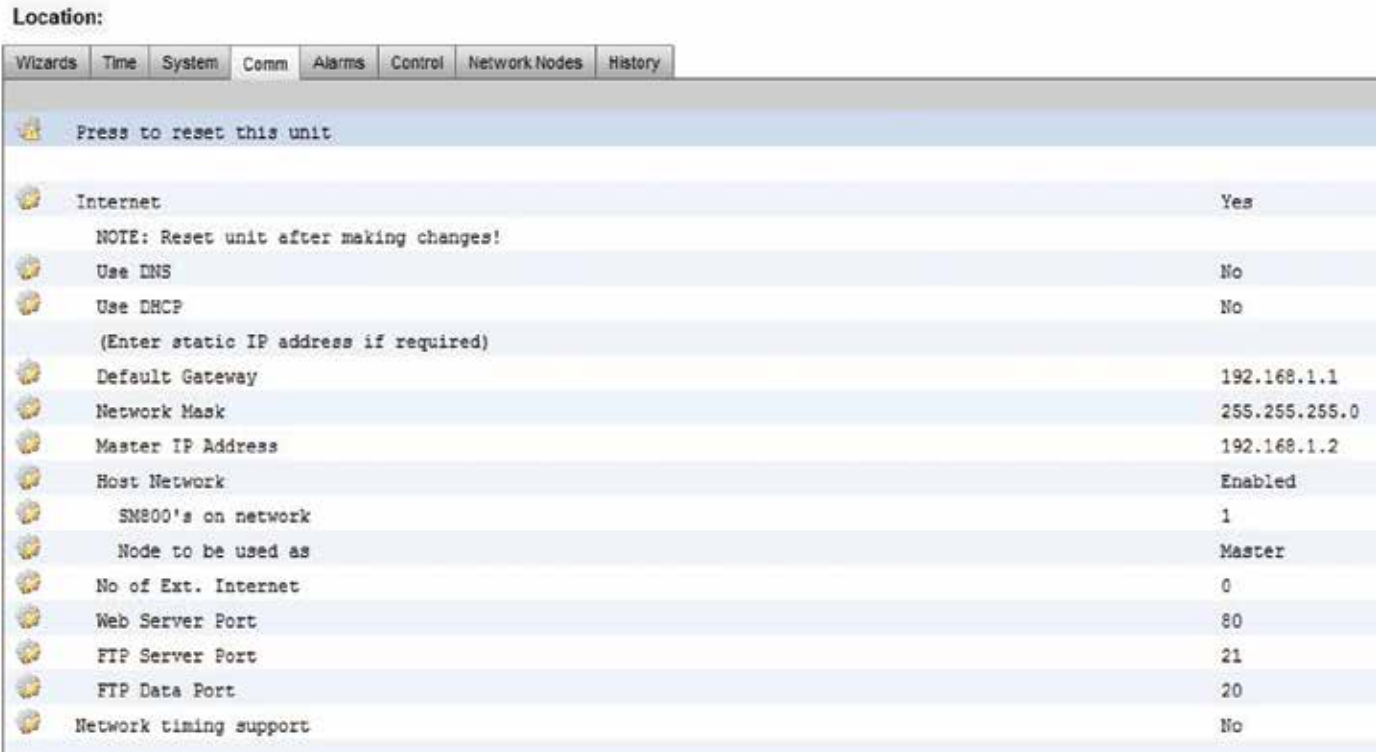
A. Laptop Setup

- Go to following locations on your Laptop
 - Control Panel > Network and Sharing > Right Click on LAN Connection and choose Properties (Not shown).
 - Next select TCP/IP and click on properties button.
 - In this example Laptop is not connected to a network and a fixed IP is entered. If connected to a network choose to obtain IP automatically.



B. AK-SM8xx Ethernet Setup

- Go to the following screens on your AK-SM8xx
 - Configuration > Comm > and enter the network settings then reset controller.



C. Using a patch CAT5 Cable connected to PC and SM Controller Ethernet Port. Then run the latest SVD/(Store View Desktop) then enter IP address of SM Controller used in step B. Once connected enter valid username and password to logon.



Remember to change back to original settings for both PC and SM Controller when complete.