

## Data Sheet

# H1F Bent Axis Fixed Displacement Motor

## Size 110 cm<sup>3</sup>

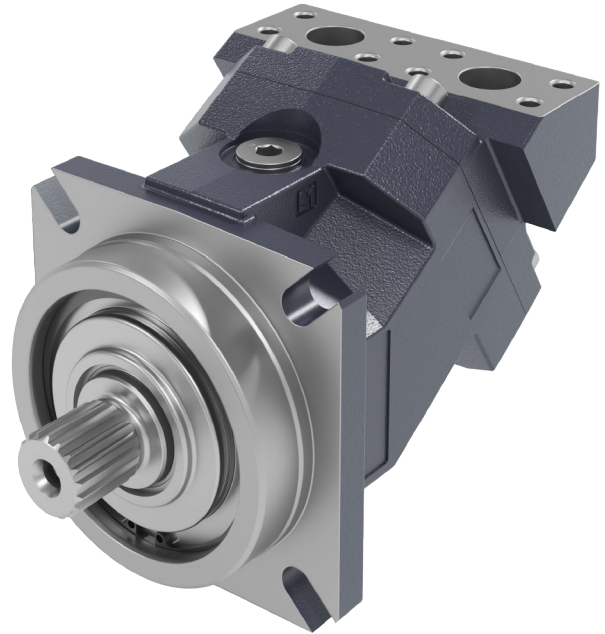
For more than 40 years, Danfoss has been developing state-of-the-art components and systems for mobile machinery used in off-highway operations around the world.

We have become a preferred supplier by offering the best of what really matters: The hardware inside your vehicle application.

Our portfolio has been expanded to a new product line: Fixed bent axis motors.

Using the proven rotating groups from H1B products, the H1F fixed bent axis motor delivers a compact unit design with high starting torque, high reliability, and best-in-class rotating efficiency.

H1F fixed bent axis motors have been developed specifically to be used in open and closed circuit applications. They are also compatible with Danfoss Open Circuit (OC) valves.



### Features

#### Designed for quality and reliability

- Proven and optimized 9 piston rotating group
- Single piece housing
- Electric components with IP67 & IP69K rating
- Open or closed circuit operation

#### Installation and packaging benefits

- Optimized for shortest length
- Standardized connector interface
- Optional integrated loop flushing device
- All metric motor
- Radial, twin or axial (coming soon) high pressure ports

#### Greater total efficiency

- Minimized losses
- Improved at high flow conditions

#### Optimized for OC valves

- Pressure ports interface for optimal connection to valves
- Optional bolt-on blocks may be supplied with H1F:
  - CBV (coming soon)
  - LVH (coming soon)

#### Expanded functionality

- Optional integrated speed sensor with
  - Dual redundant speed sensing
  - Direction indication
  - Temperature sensing
  - Wire fault detection

---

Comprehensive technical literature is online at [www.danfoss.com](http://www.danfoss.com)

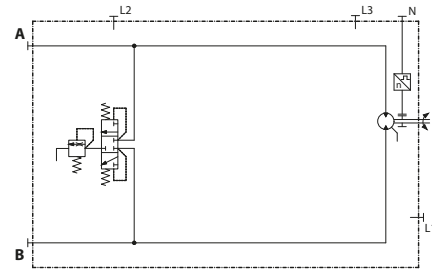
---

## Technical specifications

<b>Weight</b>	SAE ISO 3019/1	31.0 - 32.2 kg [68.3 - 71.0 lb]
	DIN ISO 3019/2	30.4 - 31.6 kg [67.0 - 69.7 lb]
	Cartridge	30.1 - 31.3 kg [66.6 - 69.0 lb]
<b>Speed</b>	Rated	4350 min <sup>-1</sup> (rpm)
	Max	4850 min <sup>-1</sup> (rpm)
<b>System pressure</b>	Working (delta)	450 bar [6527 psi]
	Working (abs.)	480 bar [6962 psi]
	Maximum (delta)	480 bar [6962 psi]
	Maximum (abs.)	510 bar [7397 psi]
	Min. low loop (abs.)	7.5 bar [109 psi]
<b>Case pressure</b>	Rated	3 bar [44 psi]
	Max.	5 bar [73 psi]
	Min.	0.3 bar [4 psi]

## Schematic

H1F with loop flushing device



### Cartridge

