

## SLP13-10 Valve

# A low power consumption, high flow rated solenoid valve

At Danfoss, we constantly strive to enable our customers to achieve ever greater efficiency, without compromising on performance.

Danfoss' new **SLP13-10** valve dramatically reduces the demand for electric power while providing unrivalled power density.

### Value proposition:

- Longer service time for battery operated vehicles
- Improved efficiency due to reduced pressure drop in the system.
- Help customers conserve resources and reduce their carbon footprint by
  - Saving energy
  - Reducing emissions
- Low power coil design eliminates coil burn-out issues

### Product features:

- Low power: 65% lower electric power demand compared to a traditional cartridge valve
- Efficient hydraulics: compact design with low pressure drop
- Power density: unrivalled flow capacity in 10-size cavity
- Environmentally robust ToughCoil
- Normally open and closed configurations
- Industry-common cavity

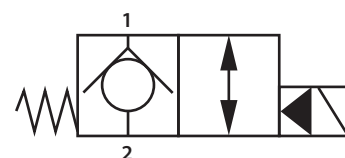
### Ratings and specifications

Performance data is typical with fluid at 21,8 cST (105 SUS) and 49°C (120°F)

|                                    |  |
|------------------------------------|--|
| Rated pressure                     | 350 bar (5000 psi)                     |
| Rated flow                         | 95 l/min (25 US gpm)                   |
| Leakage                            | 10 drops/min, max @ 350 bar (5000 psi) |
| Cavity                             | SDC10-2                                |
| Max coil power consumption at 25°C | 10 W                                   |



Normally closed



Normally open

