

Data Sheet:

Fitting assembly with Boston EHW194 hose size -4 thru -16

For sizes -20, -24 and -32 see: doc # AN533348779116en-000101

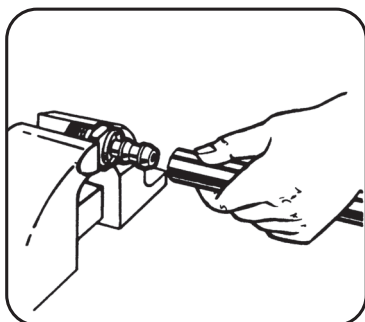


Hose assembly instructions

Socketless, FD83 connectors and UQD connectors

SOCKETLESS® fittings with Boston® EHW094 and EHW194 hose

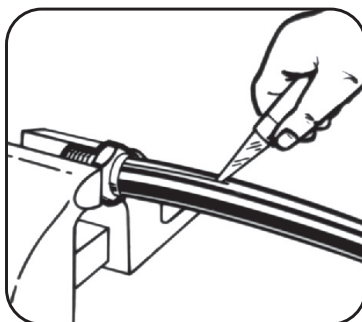
To assemble



Step 1

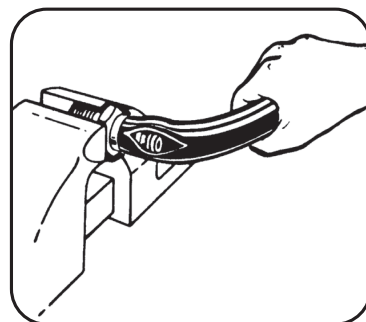
Push hose on fitting until hose end bottoms underneath protective cap as shown.

To disassemble



Step 1

Slit hose lengthwise from protective cap to end of nipple.

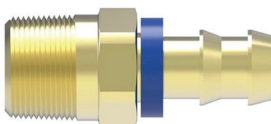


Step 2

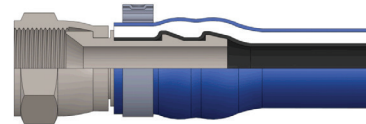
Bend hose, then snap hose off with a quick tug.

SOCKETLESS fittings

Low pressure service



Clamp location
on hose fitting



Clamp Information

for SOCKETLESS, FD83
and UQD connectors

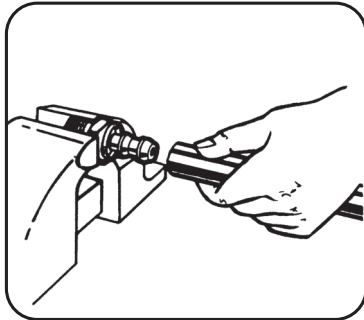


| Dash size | Part number | Reference | Ear width | Band width | Size range |
|-----------|-------------|------------|--------------|-------------|---------------------------|
| | | | mm (Inch) | mm (Inch) | mm (Inch) |
| -04 | FF91764-162 | 016.0-706R | 8.0 (0.315) | 7.0 (0.276) | 13.5 - 16.0 (0.53 - 0.63) |
| -06 | FF91764-198 | 019.8-706R | 10.0 (0.394) | 7.0 (0.276) | 16.6 - 19.8 (0.65 - 0.78) |
| -08 | FF91764-241 | 024.1-706R | 10.0 (0.394) | 7.0 (0.276) | 20.9 - 24.1 (0.82 - 0.95) |
| -10 | FF91764-271 | 027.1-706R | 10.0 (0.394) | 7.0 (0.276) | 23.9 - 27.1 (0.94 - 1.07) |
| -12 | FF91764-316 | 031.6-706R | 10.0 (0.394) | 7.0 (0.276) | 28.4 - 31.6 (1.12 - 1.24) |
| -16 | FF91764-396 | 039.6-706R | 10.0 (0.394) | 7.0 (0.276) | 36.4 - 39.6 (1.43 - 1.56) |

The use of clamp is dependent on the performance parameters of hose.
Please refer to hose pressure ratings for when clamp is required.

FD83 and UQD Series hose assembly instructions for quick disconnect coupling with Boston EHW094 & EHW194 hose

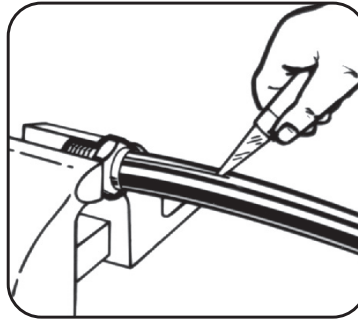
To assemble



Step 1

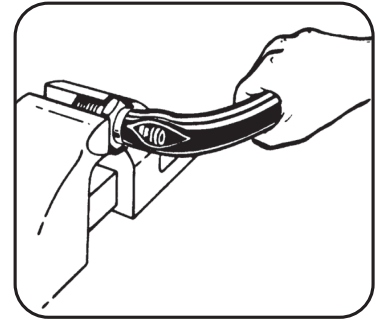
Push hose on coupling hose barbs until hose end touches the flat surface of the coupling body.

To disassemble



Step 1

Slit hose lengthwise from edge of coupling body to end of the barb.

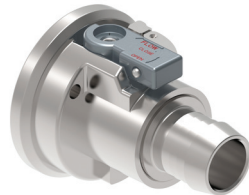


Step 2

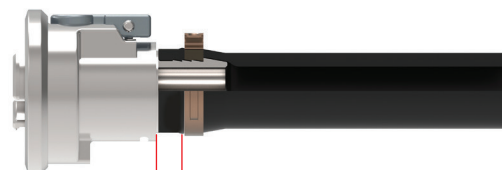
Bend hose, then snap hose off with a quick tug.

FD83 series

Full-flow dual-interlock coupling



Clamp location on hose fitting



11.0mm \pm 1.0mm

-16 Clamp location:
11.0mm \pm 1.0mm from FD83 body

Universal Quick Disconnect (UQD)

For thermal management applications



Clamp location on hose fitting

