



Discover our latest cartridge valves

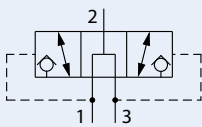
At Danfoss, we continually enhance our cartridge valve portfolio to provide the best solution for a wide range of applications. These energy-efficient valves are well-suited for various types of mobile machinery and can be used effectively in auxiliary and pilot circuits, to ensure the best balance of size, weight, and cost. To learn more and for full technical information, visit danfoss.com.

Small things
matter.

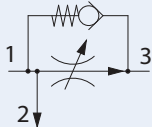


	Cavity	Rated pressure	Rated flow	Coil type
SH08-R Shuttle valve, reverse logic, poppet type	SDC08-4	230 bar [3300 psi]	3 l/min [0.8 US gpm]	N/A
HFCV10-PT Flow control valve, fully adjustable	SDC10-3	350 bar [5000 psi]	45 l/min [12 US gpm]	N/A
SV07-23-02 Solenoid valve, spool type, 3 way, 2 position	CP07-3	80 bar [1160 psi]	8 l/min [2.1 US gpm]	M13 standard R13 robust
SVP08-DDB Solenoid valve, poppet type, 3 way, 2 position	SDC08-3	230 bar [3300 psi]	3l/min [0.8 US gpm]	M13 standard R13 robust
PPR09-POR Proportional, pilot-operated pressure reducing valve	SDC10-4	50 bar [725 psi]	25 l/min [7 US gpm]	M13 standard R13 robust

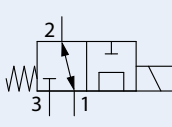
SH08-R



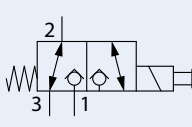
HFCV10-PT



SV07-23-02



SVP08-DDB



PPR09-POR

