



Electrical Installation

S51-1 Motor

Electrohydraulic Two-Position Controls T1, T2, T7



Revision history*Table of revisions*

Date	Changed	Rev
August 2015	Converted to Danfoss layout	BA
April 2007	First edition	AA

Contents
Literature references

S51-1 Electrohydraulic Two-Position Controls T1, T2, T7 literature references.....	4
Latest version of technical literature.....	4

Product overview

Product image.....	5
Nomenclature.....	5
Theory of operation.....	6
S51-1 Electrohydraulic Two-Position Controls T1, T2, T7.....	6
PCOR.....	6
T*CA.....	6
T*D1, T*D2, T* D7.....	6
T*C2.....	6
Control operation T1**, T2**, T7**.....	6
Hydraulic schematics.....	7
Electrical specifications.....	7

Electrical installation

Pinout.....	8
DIN 43650 connector.....	8
AMP Junior Power Timer connector.....	8
Pin compatibility.....	8
Pressure compensator logic.....	9
Hydraulic brake pressure defeat.....	9
Electric brake pressure defeat.....	9
Mating connector.....	9
DIN 43650 connector parts list.....	9
AMP connector parts list.....	9

Electrical Installation S51-1 Electrohydraulic Two-Position Controls T1, T2, T7

Literature references**S51-1 Electrohydraulic Two-Position Controls T1, T2, T7 literature references**

Literature title	Description	Literature number
<i>S51 and 51-1 Bent Axis Variable Displacement Motors Technical Information</i>	Complete product electrical and mechanical specifications	520L0440
<i>On/Off Functions Function Block User Manual</i>	Compliant function block set-up information	11022918

Latest version of technical literature

Danfoss product literature is online at: <http://powersolutions.danfoss.com/literature/>

Product overview

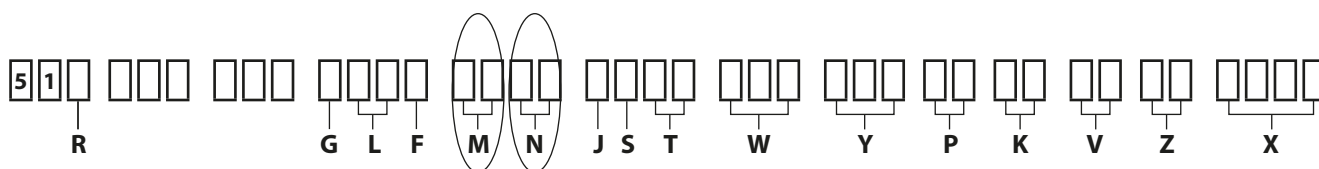
Product image

S51-1 Electrohydraulic Two-Position Controls T1, T2, T7



Nomenclature

S51-1 model code



Code M and N options

M	Description	N	Description
T1	Electrohydraulic two-position control, 12 Vdc, DIN Connector	D1	Electric brake pressure defeat, 12 Vdc, DIN Connector
		CA	With hydraulic brake pressure defeat
		C2	Without brake pressure defeat
T2	Electrohydraulic two-position control, 24 Vdc, DIN Connector	D2	Electric brake pressure defeat, 24 Vdc, DIN Connector
		CA	With hydraulic brake pressure defeat
		C2	Without brake pressure defeat
T7	Electrohydraulic two-position control, 12 Vdc, AMP® Connector	D7	Electric brake pressure defeat, 12 Vdc, AMP Connector
		CA	With hydraulic brake pressure defeat
		C2	Without brake pressure defeat

Only certain control options for the S51-1 motor utilize the Electrohydraulic Two-Position Control. The combination of the M and N modules define the motor control's functionality. Please refer to the motor's nomenclature to determine if the motor is equipped with the proper option. The nomenclature can be found on the motor's nametag.

Product overview

Theory of operation

S51-1 Electrohydraulic Two-Position Controls T1, T2, T7

Displacement can be changed electrohydraulically under load from minimum displacement to maximum displacement and vice versa, by using a solenoid. When the solenoid is energized the motor has maximum displacement and the pressure compensator does not function.

- Solenoid not energized = minimum displacement
- Solenoid energized = maximum displacement

PCOR

The control can be overridden by Pressure Compensator Override (PCOR) using high loop pressure. When the PCOR activates, the motor displacement increases toward maximum. Pressure ramp from PCOR start pressure (with motor at minimum displacement) until maximum displacement is reached is less than 10 bar [145 psi]. This ensures optimal power utilization throughout the entire displacement range of the motor. PCOR start pressure is adjustable from 110 to 370 bar [1600 to 5370 psi].

T*CA

Pressure compensator configuration: T*CA with hydraulic brake pressure defeat.

A shuttle valve ahead of the pressure compensator prevents operation in the deceleration direction (when motor is running in pump mode). This is designed to prevent rapid or uncontrolled deceleration while the vehicle/machine is slowing down. The shuttle valve must be controlled by a 2-line external signal.

T*D1, T*D2, T* D7

Pressure compensator configuration: T*D1, T*D2, T* D7 with electric brake pressure defeat.

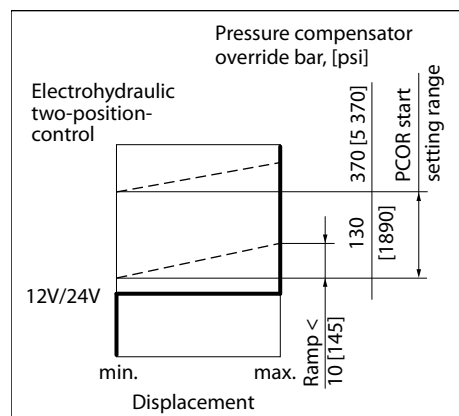
A solenoid-switched valve ahead of the pressure compensator prevents operation in the deceleration direction (when motor is running in pump mode). This is designed to prevent rapid or uncontrolled deceleration while the vehicle/machine is slowing down. The solenoid valve must be controlled by an external electric signal, based on direction of motor rotation.

T*C2

Pressure compensator configuration: T*C2 without brake pressure defeat

Pressure compensator functions when the motor is running in motor mode as well as in pump (deceleration) mode.

Control operation T1, T2**, T7****



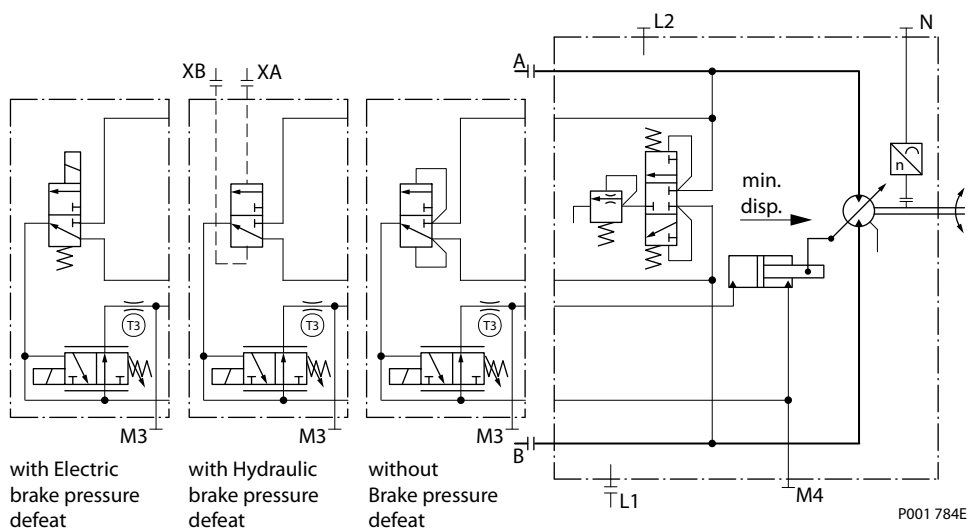
P001 872E

Product overview
⚠ Warning

Unintended vehicle or machine movement hazard. The loss of hydrostatic drive line power, in any mode of operation (forward, neutral, or reverse) may cause the system to lose hydrostatic braking capacity. You must provide a braking system, redundant to the hydrostatic transmission, sufficient to stop and hold the vehicle or machine in the event of hydrostatic drive power loss.

Hydraulic schematics

Circuit diagram – motor with electrohydraulic two-position control T1**, T2**, T7**



Ports:

- A, B** = Main pressure lines
- L1, L2** = Drain lines
- M3, M4** = Gauge port servo pressure
- XA, XB** = Control pressure ports, brake pressure defeat
- T3** = Optional orifices
- N** = Speed sensor

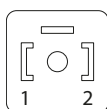
Electrical specifications

Two-position solenoid

M-option	T1, T7	T2
Voltage	12 Vdc	24 Vdc
Rated power	34 W	34 W

Electric brake pressure defeat solenoid

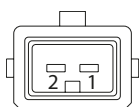
N-option	D1, D7	D2
Voltage	12 Vdc	24 Vdc
Rated power	34 W	34 W

Electrical installation
Pinout
DIN 43650 connector
Pin location

Pinout

Pin	Function
1	PWM signal
2	Ground

Pinout (alternative)

Pin	Function
1	Ground
2	PWM signal

AMP Junior Power Timer connector
Pin location

Pinout

Pin	Function
1	PWM signal
2	Ground

Pinout (alternative)

Pin	Function
1	Ground
2	PWM signal

Pin compatibility
PLUS+1® module pin type/Two-position solenoid

Pin	Function
1,2	DOUT
1,2	DOUT/PVG Power
1,2	PWMOUT/DOUT/PVG Power supply
1,2	PWMOUT/DOUT/PVGOUT
1,2	Power ground -

Electrical Installation S51-1 Electrohydraulic Two-Position Controls T1, T2, T7

Electrical installation

PLUS+1[®] module pin type/ Electric brake pressure defeat solenoid

Pin	Function
1,2	DOUT
1,2	DOUT/PVG Power
1,2	PWMOUT/DOUT/PVG Power supply
1,2	PWMOUT/DOUT/PVGOUT
1,2	Power ground -

Pressure compensator logic

Hydraulic brake pressure defeat

Motor rotation	High pressure port	Control pressure on port*	PCOR function
CW	A	XA	yes
CW	A	XB	no
CCW	B	XA	no
CCW	B	XB	yes

* Differential control pressure between port XA/XB:

$\Delta p_{\min} = 0.5 \text{ bar [7 psi]}$

$\Delta p_{\max} = 50 \text{ bar [725 psi]}$

Electric brake pressure defeat

Rotation	High pressure port	Solenoid	PCOR function
CW	A	Energized	Yes
CW	A	Non-energized	No
CCW	B	Energized	No
CCW	B	Non-energized	Yes

Mating connector

DIN 43650 connector parts list

Description	Quantity	Ordering Number
DIN 43650 connector	1	Hirschmann 932 106-100
Mating connector kit	1	Danfoss K09129

AMP connector parts list

Description	Quantity	Ordering number
Two pin connector	1	Tyco Electronics 282189-1
Contacts	2	Tyco Electronics 929940-1
Seal plugs	2	Tyco Electronics 828904-1
Mating connector kit	1	Danfoss K19815



Products we offer:

- Bent Axis Motors
- Closed Circuit Axial Piston Pumps and Motors
- Displays
- Electrohydraulic Power Steering
- Electrohydraulics
- Hydraulic Power Steering
- Integrated Systems
- Joysticks and Control Handles
- Microcontrollers and Software
- Open Circuit Axial Piston Pumps
- Orbital Motors
- PLUS+1® GUIDE
- Proportional Valves
- Sensors
- Steering
- Transit Mixer Drives

Danfoss Power Solutions is a global manufacturer and supplier of high-quality hydraulic and electronic components. We specialize in providing state-of-the-art technology and solutions that excel in the harsh operating conditions of the mobile off-highway market. Building on our extensive applications expertise, we work closely with our customers to ensure exceptional performance for a broad range of off-highway vehicles.

We help OEMs around the world speed up system development, reduce costs and bring vehicles to market faster.

Danfoss – Your Strongest Partner in Mobile Hydraulics.

Go to www.powersolutions.danfoss.com for further product information.

Wherever off-highway vehicles are at work, so is Danfoss. We offer expert worldwide support for our customers, ensuring the best possible solutions for outstanding performance. And with an extensive network of Global Service Partners, we also provide comprehensive global service for all of our components.

Please contact the Danfoss Power Solution representative nearest you.

Comatrol

www.comatrol.com

Schwarzmueller-Inverter

www.schwarzmueller-inverter.com

Turola

www.turolaocg.com

Hydro-Gear

www.hydro-gear.com

Daikin-Sauer-Danfoss

www.daikin-sauer-danfoss.com

Local address:

Danfoss Power Solutions (US) Company
2800 East 13th Street
Ames, IA 50010, USA
Phone: +1 515 239 6000

Danfoss Power Solutions GmbH & Co. OHG
Krokamp 35
D-24539 Neumünster, Germany
Phone: +49 4321 871 0

Danfoss Power Solutions ApS
Nordborgvej 81
DK-6430 Nordborg, Denmark
Phone: +45 7488 2222

Danfoss Power Solutions Trading (Shanghai) Co., Ltd.
Building #22, No. 1000 Jin Hai Rd
Jin Qiao, Pudong New District
Shanghai, China 201206
Phone: +86 21 3418 5200

Danfoss can accept no responsibility for possible errors in catalogues, brochures and other printed material. Danfoss reserves the right to alter its products without notice. This also applies to products already on order provided that such alterations can be made without changes being necessary in specifications already agreed. All trademarks in this material are property of the respective companies. Danfoss and the Danfoss logotype are trademarks of Danfoss A/S. All rights reserved.