

Data Sheet

CUT 5144

Closed circuit axial piston transmission



For more than 40 years, Danfoss has been developing state-of-the-art components and systems for mobile machinery used in off-highway operations around the world. We have become a preferred supplier by offering the best of what really matters inside application.

The CUT 5144 was designed as a Z-style transmission. The design has been optimized to give high power in compact size. It comes with the proven 51cc variable pump, clubbed with 44cc fixed motor. This unit offers an infinite gear ratio in the compact size.

This design provides higher life and performance in the same package and is well suited for the tractors.

The electric control is PLUS+1™ Compliant. PLUS+1™ allows you to rapidly develop and customize electronic machine control.

Features

Designed for quality and reliability

- Single piece swashplate
- High speed capability
- Proven pump and motor component

Control

- NFPE control

Installation and packaging benefits

- Length optimized pump
- High power density with less weight
- Standardized connection interface



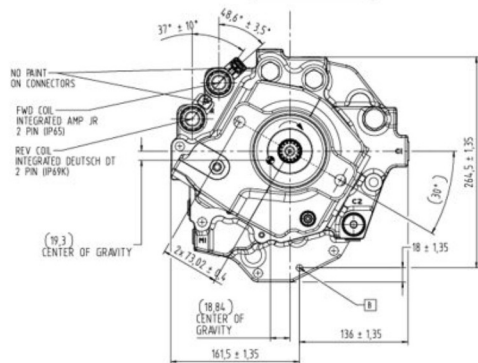
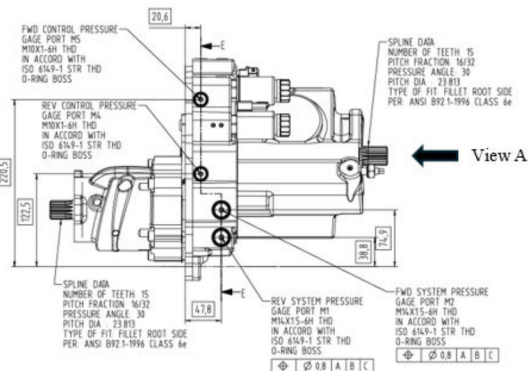
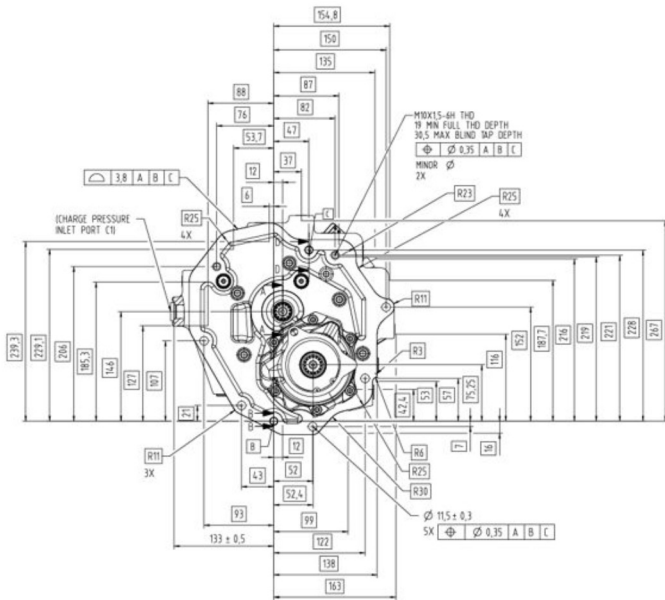
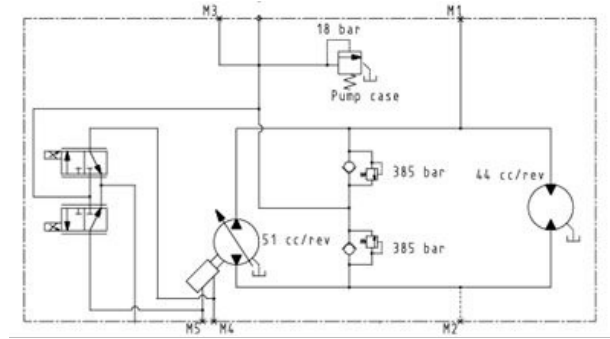
Comprehensive technical literature is online at www.danfoss.com

Technical specifications

Parameters		Size 091
Displacement cm ³ [in ³]	Pump	51.0 [3.11]
	Motor	43.5 [2.65]
Input speed min ⁻¹ (rpm)	I/P shaft minimum	900
	Pump speed, max continuous	2850
	Motor speed max continuous	3300
System pressure bar [psi]	Max. working*	300 [4350]
	Max system pressure, intermittent	385 [5580]
Weight, kg [lb]		51 [112]

* Pressures above max. working pressure requires Danfoss approval.

Schematic



View A

