

Installation Guide

Steering Wheel Sensor Type SASA



Revision history*Table of revisions*

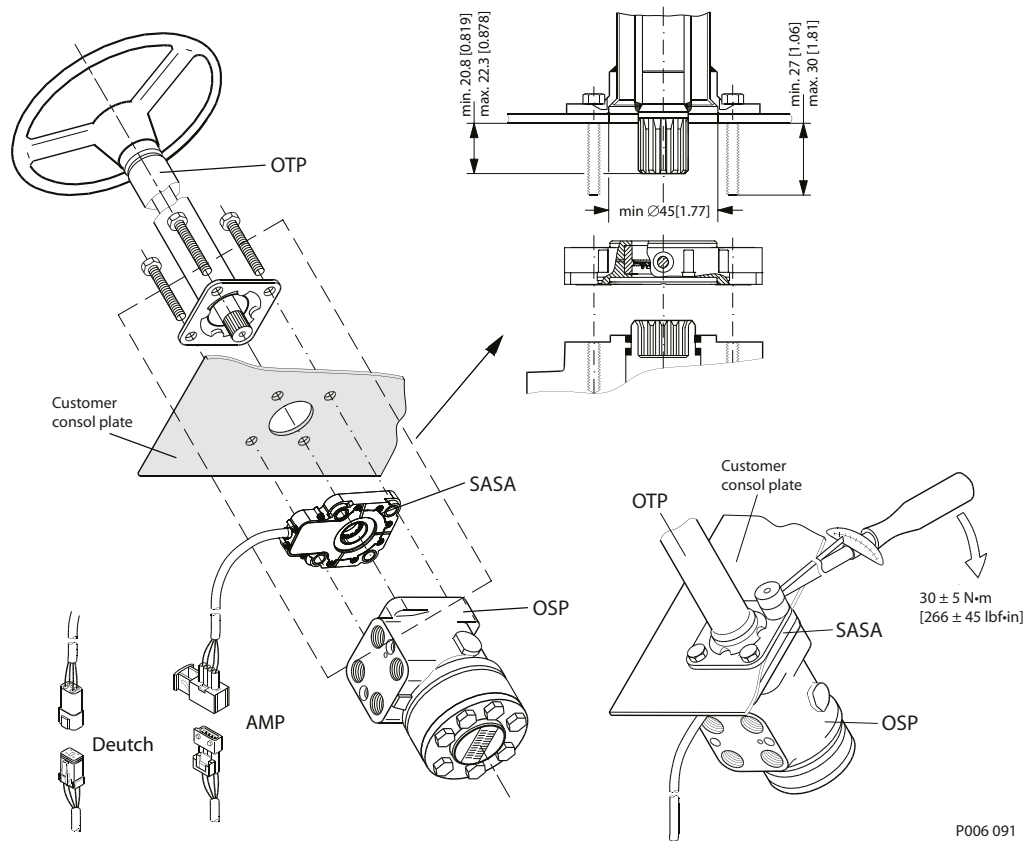
Date	Changed	Rev
December 2025	Corrected cable connections specs	0201
	Changed document number from 'AN00000360' to 'AN234886485384'	XX
June 2017	First edition	0101

Contents

SASA Assembly

Cable Connections.....	4
Warning.....	5

SASA Assembly

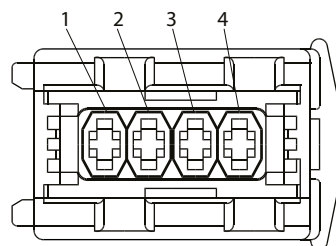


There is a risk of bending the spline profile of SASA sensor in case of using force.
Make sure that the spline profile of the SASA sensor is aligned to the profile of the steering column shaft.
A safe method of assembly is to place SASA sensor on the steering column spline shaft first - and not opposite!

Cable Connections

AMP connector version, type 2-967059-1

AMP connector pin-out



1. CAN-Low
2. + Supply voltage
3. Ground
4. CAN-High

Mating connector assembly	AMP type 2-965261-1
JPT contact	2-962915-1
Wire sealing	828904-1

SASA Assembly

DEUTSCH connector version, type DT04-4P-CE02

DEUTSCH connector pin-out



1. CAN-High
2. CAN-Low
3. + Supply voltage
4. Ground

Housing	DT04-4S-CE02
Crimp	0462-201-16141
Wedge	W4S

Warning

All types of sensors are used under a wide range of operating conditions, in many types of machines and therefore may fail and cause serious injury or damage.
 The machine manufacturer has the sole responsibility for determining which product is most suitable and ensuring that requirements on performance, safety and warnings are met for all machines.
 It is important that the machine will be analysed in all details.
 When choosing a control system and level of safety, ISO 13849 (Safety-related parts of control systems) may provide suitable help.

Products we offer:

- Cylinders
- Electric converters, machines, and systems
- Electronic controls, HMI, and IoT
- Hoses and fittings
- Hydraulic power units and packaged systems
- Hydraulic valves
- Industrial clutches and brakes
- Motors
- PLUS+1® software
- Pumps
- Steering
- Transmissions

Danfoss Power Solutions designs and manufactures a complete range of engineered components and systems. From hydraulics and electrification to fluid conveyance, electronic controls, and software, our solutions are engineered with an uncompromising focus on quality, reliability, and safety.

Our innovative products makes increased productivity and reduced emissions a possibility, but it's our people who turn those possibilities into reality. Leveraging our unsurpassed application know-how, we partner with customers around the world to solve their greatest machine challenges. Our aspiration is to help our customers achieve their vision — and to earn our place as their preferred and trusted partner.

Go to www.danfoss.com or scan the QR code for further product information.

**Hydro-Gear**

www.hydro-gear.com

Daikin-Sauer-Danfoss

www.daikin-sauer-danfoss.com

**Danfoss
Power Solutions (US) Company**
2800 East 13th Street
Ames, IA 50010, USA
Phone: +1 515 239 6000

**Danfoss
Power Solutions GmbH & Co. OHG**
Krokamp 35
D-24539 Neumünster, Germany
Phone: +49 4321 871 0

**Danfoss
Power Solutions ApS**
Nordborgvej 81
DK-6430 Nordborg, Denmark
Phone: +45 7488 2222

**Danfoss
Power Solutions Trading
(Shanghai) Co., Ltd.**
Building #22, No. 1000 Jin Hai Rd
Jin Qiao, Pudong New District
Shanghai, China 201206
Phone: +86 21 2080 6201

Danfoss can accept no responsibility for possible errors in catalogues, brochures and other printed material. Danfoss reserves the right to alter its products without notice. This also applies to products already on order provided that such alterations can be made without subsequent changes being necessary in specifications already agreed. All trademarks in this material are property of the respective companies. Danfoss and the Danfoss logotype are trademarks of Danfoss A/S. All rights reserved.